

Supplementary information

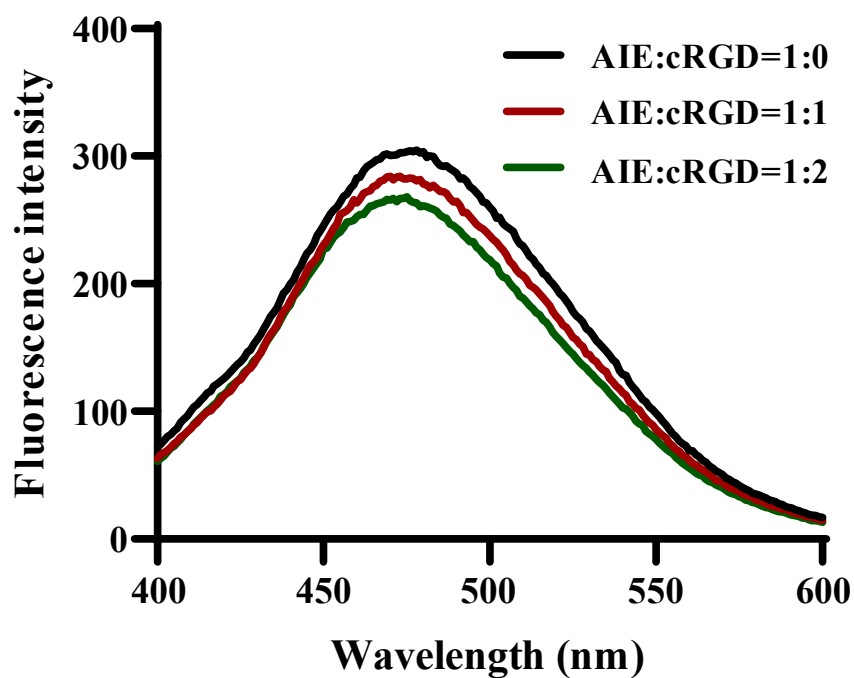


Figure S1. Fluorescence spectra of different proportion of AIEgens with cRGD. The different proportions of AIEgens and cRGD are AIE/cRGD=1/0 (black line), AIE/cRGD=1/1 (red line), AIE/cRGD=1/2 (green line), respectively.

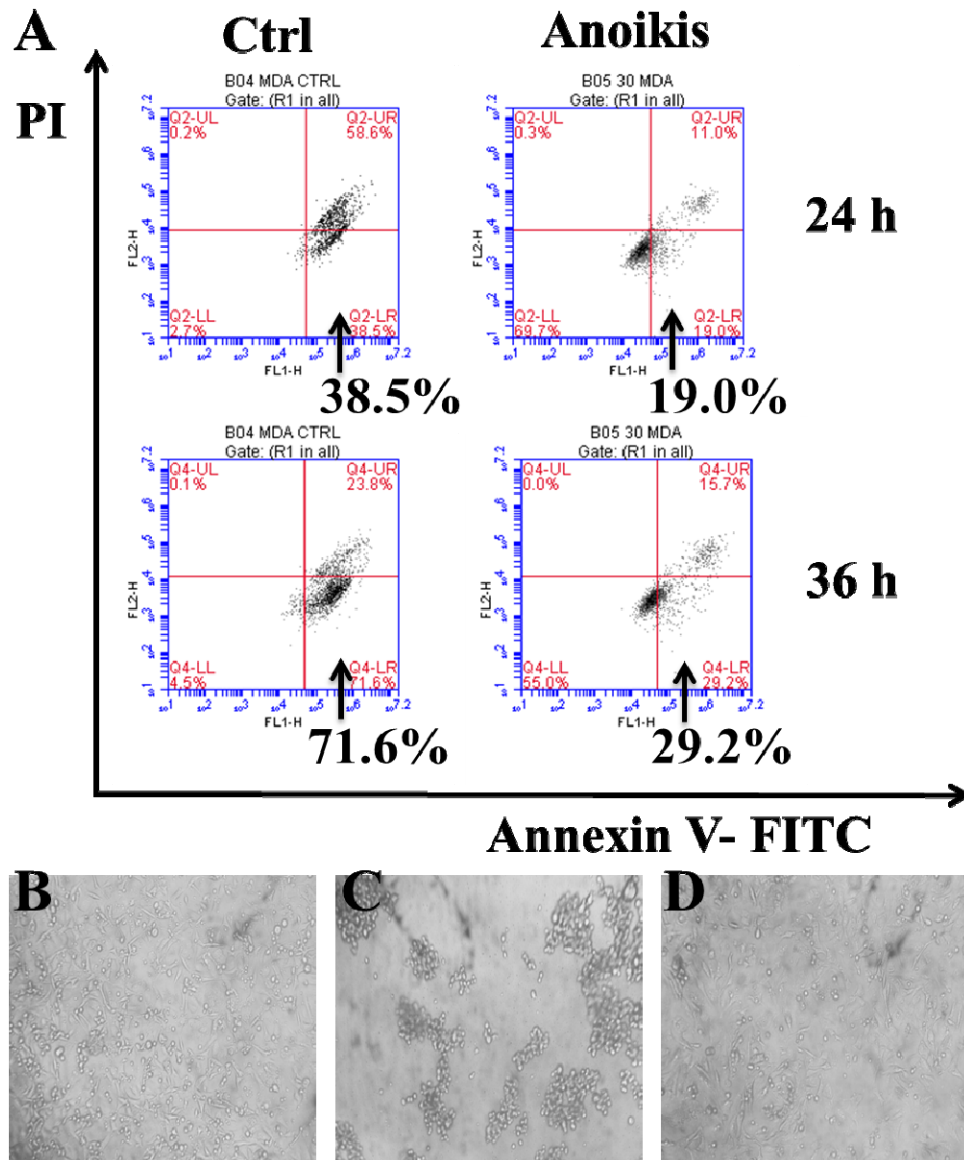


Figure S2. (A) The effects of cell apoptosis on MDA-MB-231 cells cultured for 24 h, 36 h, in six-well cell culture plates treated with poly-HEMA (30 mg/ml). (B-D) The cells morphology change in MDA-MB-231 cells. (B) Cultured for 24 h in untreated six-well cell culture plates. (C) Cultured for 24 h in six-well cell culture plates treated with poly-HEMA (30 mg/ml). (D) Cultured for 24 h in six-well cell culture plates treated with poly-HEMA (30 mg/ml), then transferred some of the cells to untreated six-well cell culture plates incubation for 24 h.

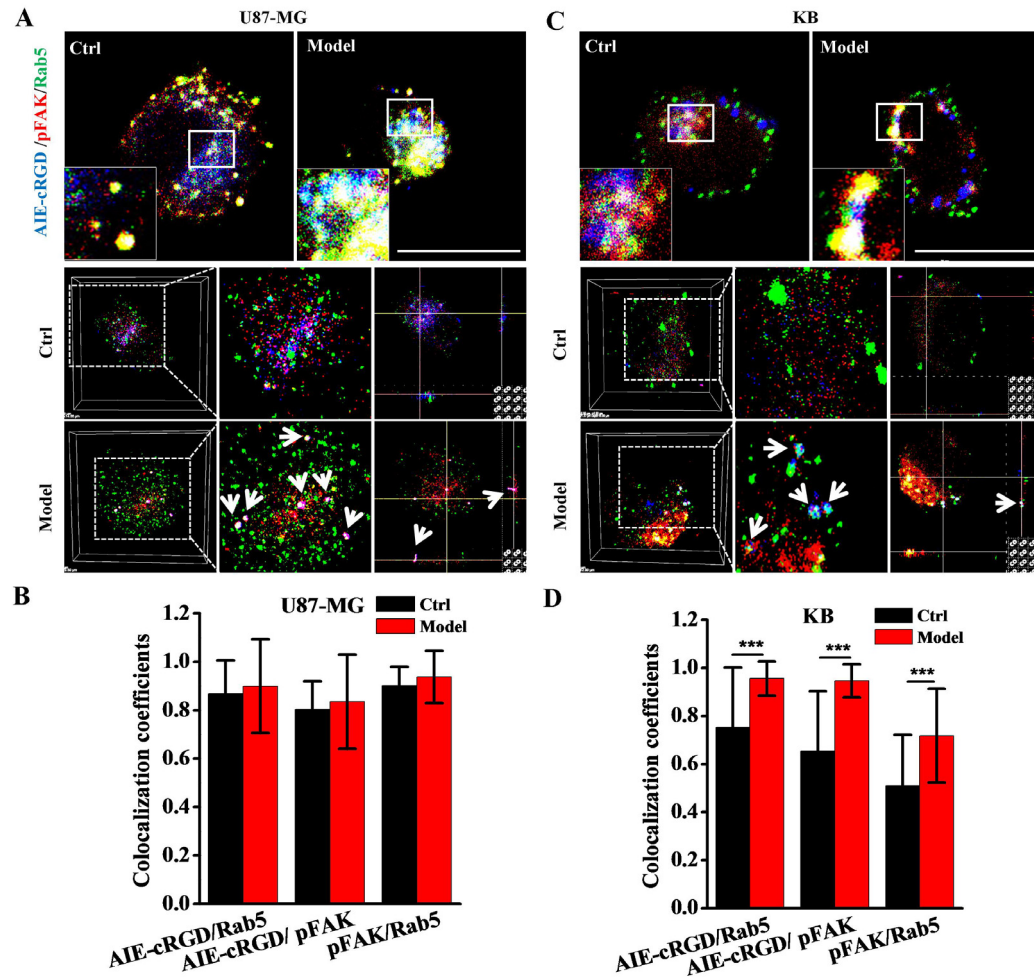


Figure S3. (A) Confocal images of U87-MG stained with AIE-cRGD (blue), fluorescence antibody of anti-pFAK (red), and anti-Rab5 (green). (B) Colocalization rate of U87-MG cells among AIE-cRGD, pFAK, and Rab5. (C) Confocal images of KB cells stained with AIE-cRGD, fluorescence antibody of anti-pFAK, and anti-Rab5. (D) Colocalization rate of KB cells among AIE-cRGD, pFAK, and Rab5. *** $p < 0.001$ represents significant differences compared with the control group. Bar = 20 μm .

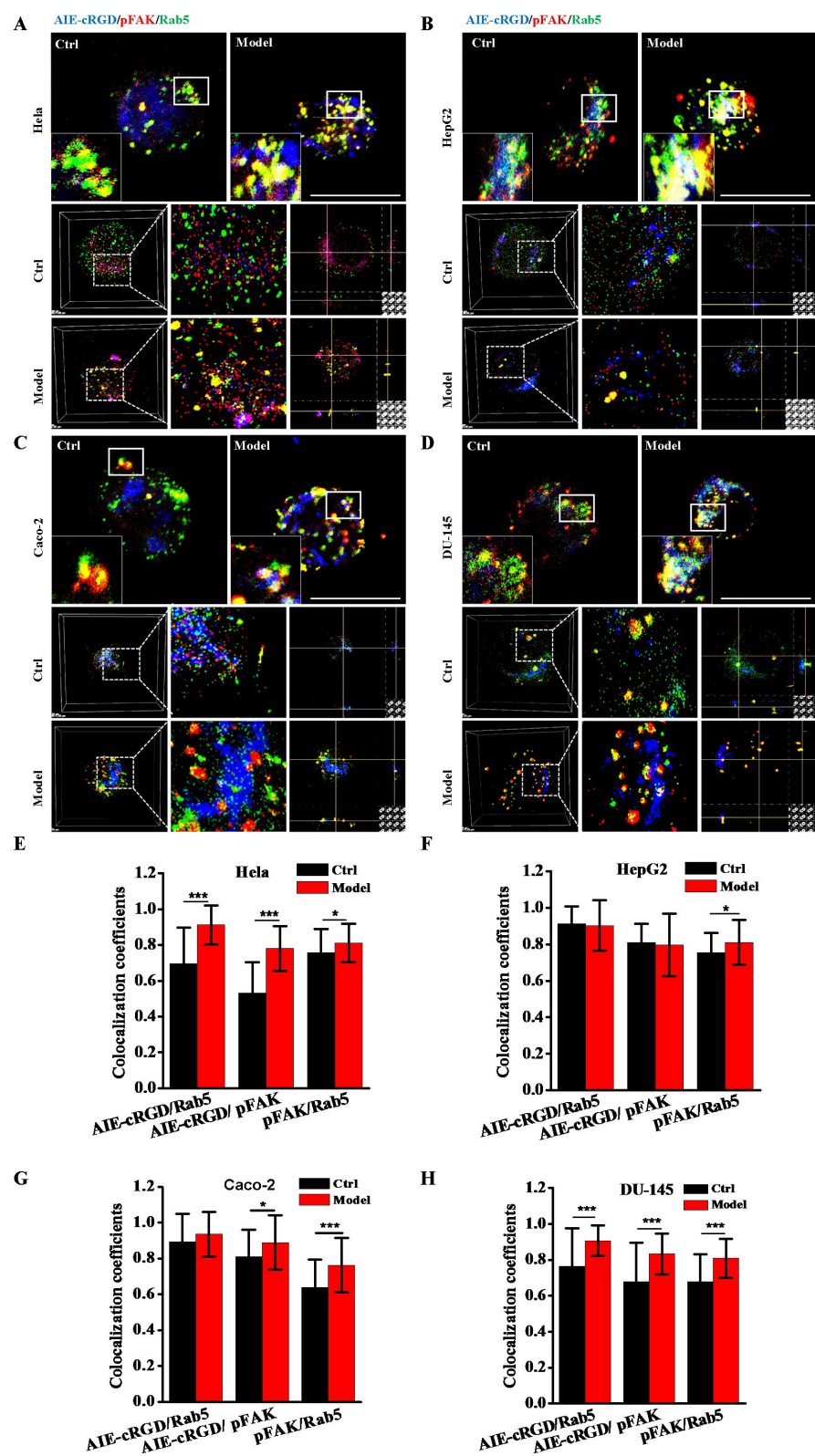


Figure S4. Confocal images of (A) HeLa cells, (B) HepG-2 cells, (C) Caco-2 cells, (D) DU-145 cells stained with AIE-cRGD (blue), fluorescence antibody of anti-pFAK (red), and anti-Rab5 (green). Colocalization rate of (E) HeLa cells, (F) HepG-2 cells, (G) Caco-2 cells, (H) DU-145 cells among AIE-cRGD, pFAK, and Rab5. *** $p < 0.001$ represents significant differences compared with the control group. Bar = 20 μm .

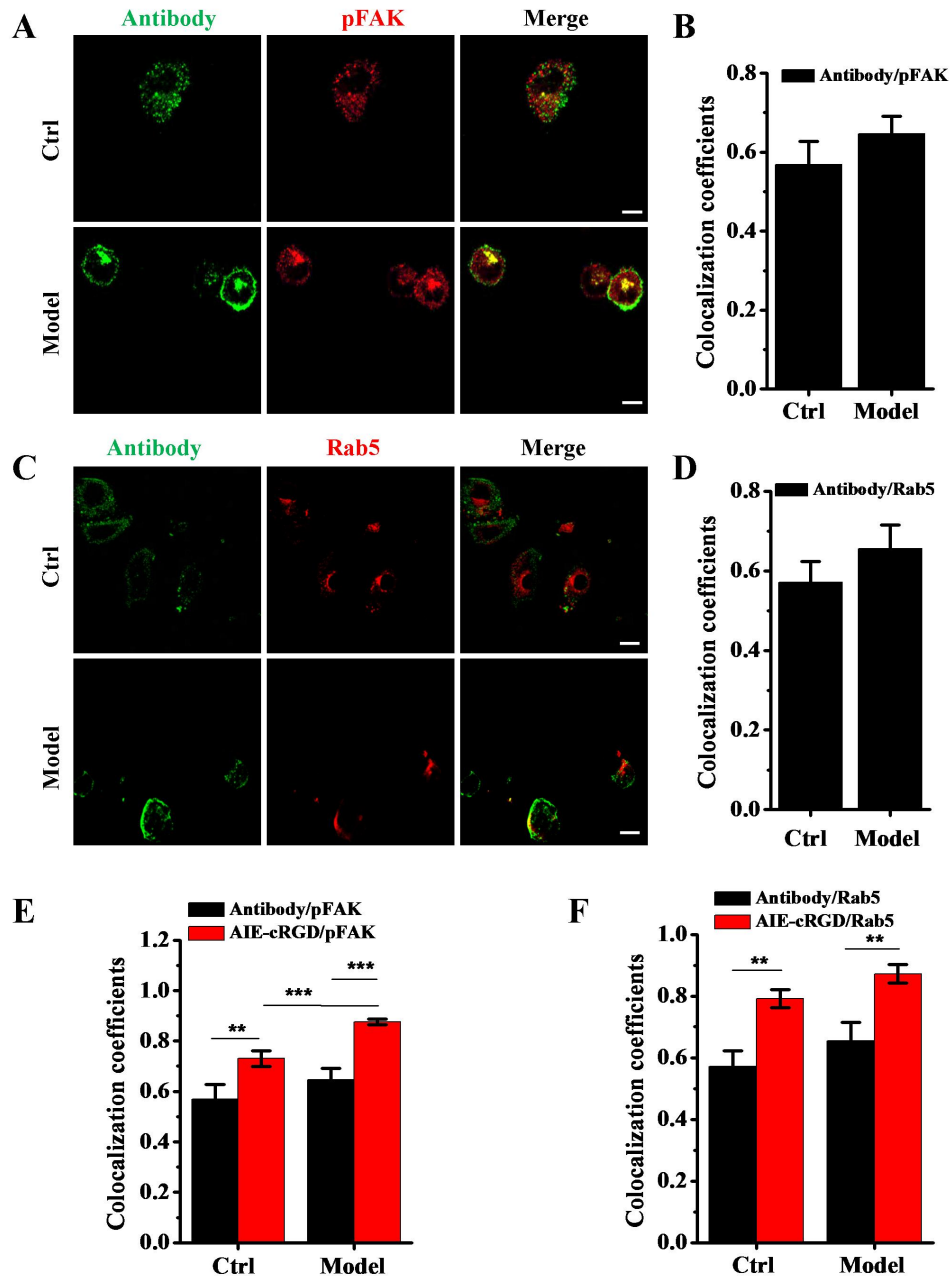


Figure S5. (A) Confocal images and (B) Colocalization statistic of MDA-MB-231 cells stained with anti-integrin antibodies and anti-pFAK antibodies. (C) Confocal images and (D) Colocalization statistic of fluorescence intensity of anti-integrin antibodies and anti-RAB5 antibodies. (E-F) Colocalization analysis in comparison AIE-cRGD with anti-integrin antibody. *** $p < 0.001$, ** $p < 0.01$ represents significant differences compared with the control group. Bar = 20 μm .