

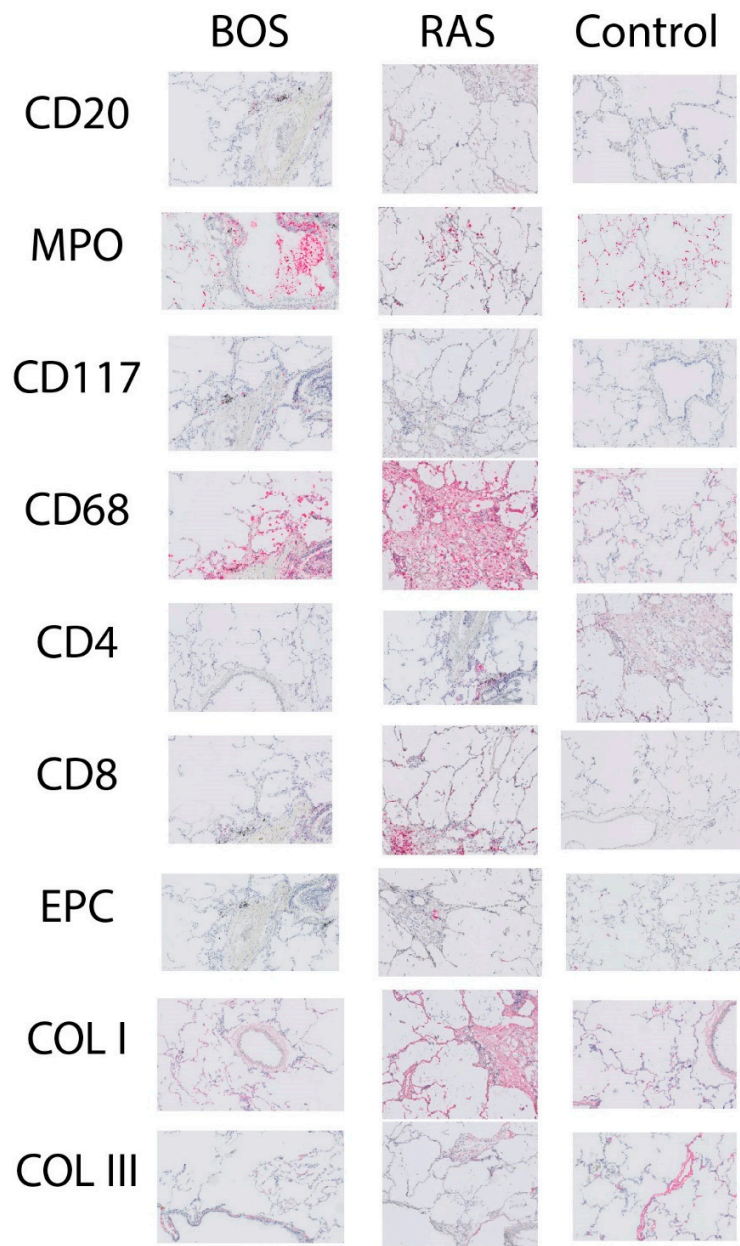
## Supplementary Materials

Item	Title/Description
Supplementary Table S1	Antibodies and Staining Protocols
Supplementary Figure S1	Representative Slides for Each Stain

**Supplementary Table S1. Antibodies and Staining Protocols.**

ANTIBODY	HOST	COMPANY	PRODUCT CODE	DILUTION	DETECTION KIT
Collagen 1	rabbit	Abcam	ab34710	1/20000	IHC J 30 min; fast red
Collagen 3	mouse	Abcam	ab6310	1/50000	IHC J 30 min; fast red
CD68	mouse	Agilent	IR60961	Ready-to-use (RTU)	IHC J 30 min; fast red
CD117/c-kit	rabbit	Agilent	A4502	1/100	IHC J 30 min; fast red
ECP	mouse	Diagnostics Development	EG2	1/800	IHC J 30 min; fast red
MPO	rabbit	Agilent	IR51161	1/10	IHC J 30 min; fast red
CD8	mouse	Agilent	IR62361	Ready-to-use (RTU)	IHC J 30 min; fast red
CD4	mouse	Agilent	IR64961	Ready-to-use (RTU)	IHC J 30 min; fast red
CD20	mouse	Agilent	IR60461	Ready-to-use (RTU)	IHC J 30 min; fast red

**Supplementary Figure S1.** Representative Slides for Each Stain.



**Legend:** Representative slides were obtained for each stain from the BOS and RAS cases used in Figure 5, as well as for a control case. The control was an unused donor lung from a 37-year-old female.