

Article

CRISPR/Cas9 mediated knockout of cyclooxygenase-2 gene inhibits invasiveness in A2058 melanoma cells

Cathleen Haase-Kohn ^{1*}, Markus Laube ¹, Cornelius K. Donat², Birgit Belter¹ and Jens Pietzsch ^{1,3}

Supporting Information

Content:

- S1: Original Western Blots of COX-2 protein content
- S2: Prostaglandin-E2 ELISA of A2058 and three clones of A2058-COX-2KO cells
- S3: In vitro cell growth of A2058 and three clones of A2058-COX-2KO cells
- S4: Subcutaneous tumor growth of two additionally A2058-COX-2KO cell lines
- S5: Representative images of the scratch assay in 10% FCS
- S6: Representative images of the scratch assay in 0% FCS

Figure S1: Protein content of COX-2 in A2058 and A2058-COX-2KO melanoma cell lines

TOP: β -actin
Cell lysates,
substrate Pico, exposure 30 s

Bottom: COX-2
Cell lysates,
substrate Pico:Femto 4:1,
exposure 300 s

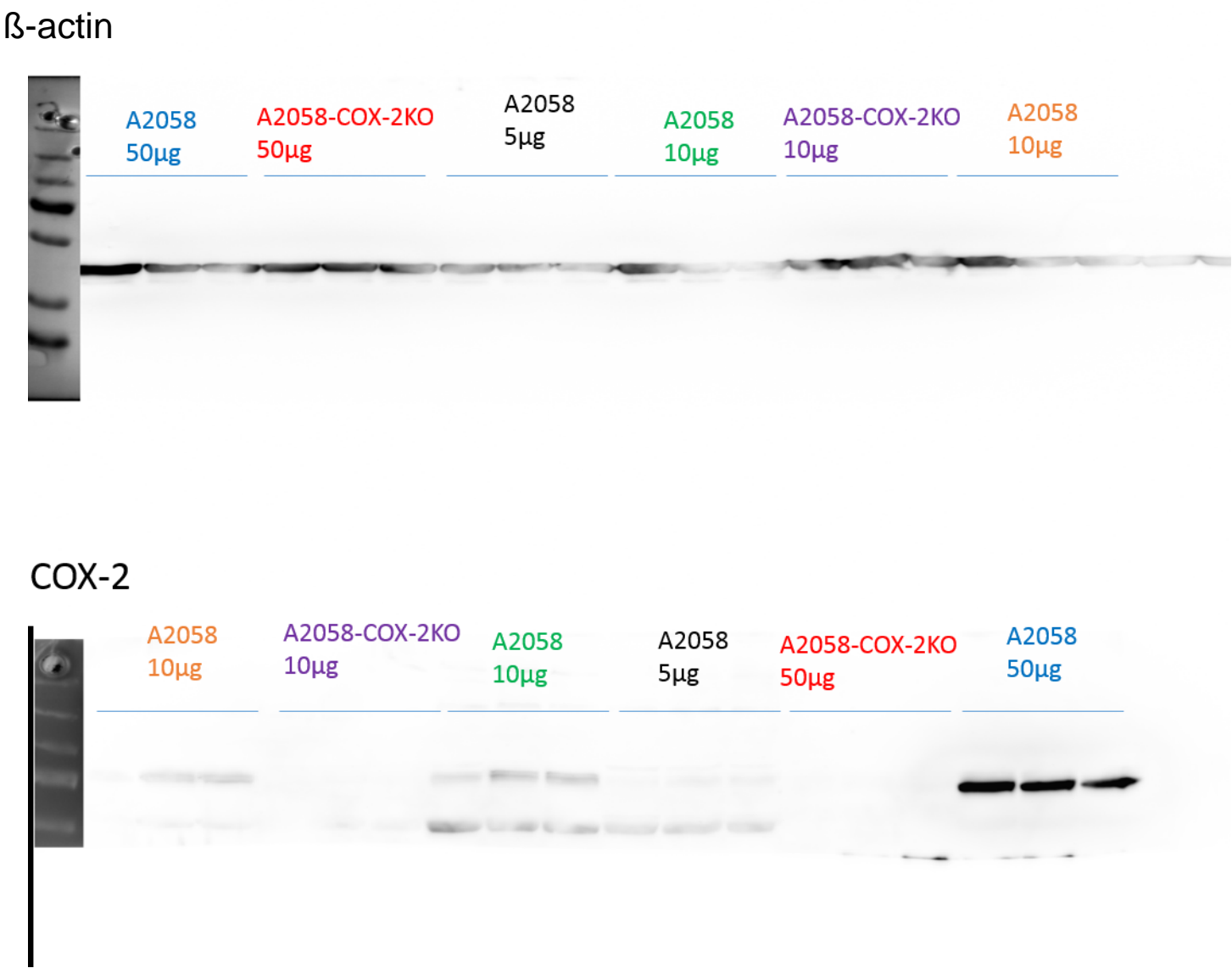


Figure S2: Prostaglandin E2 ELISA in cultured supernatants from A2058 and three different clones of A2058-COX-2KO cell lines in melanoma

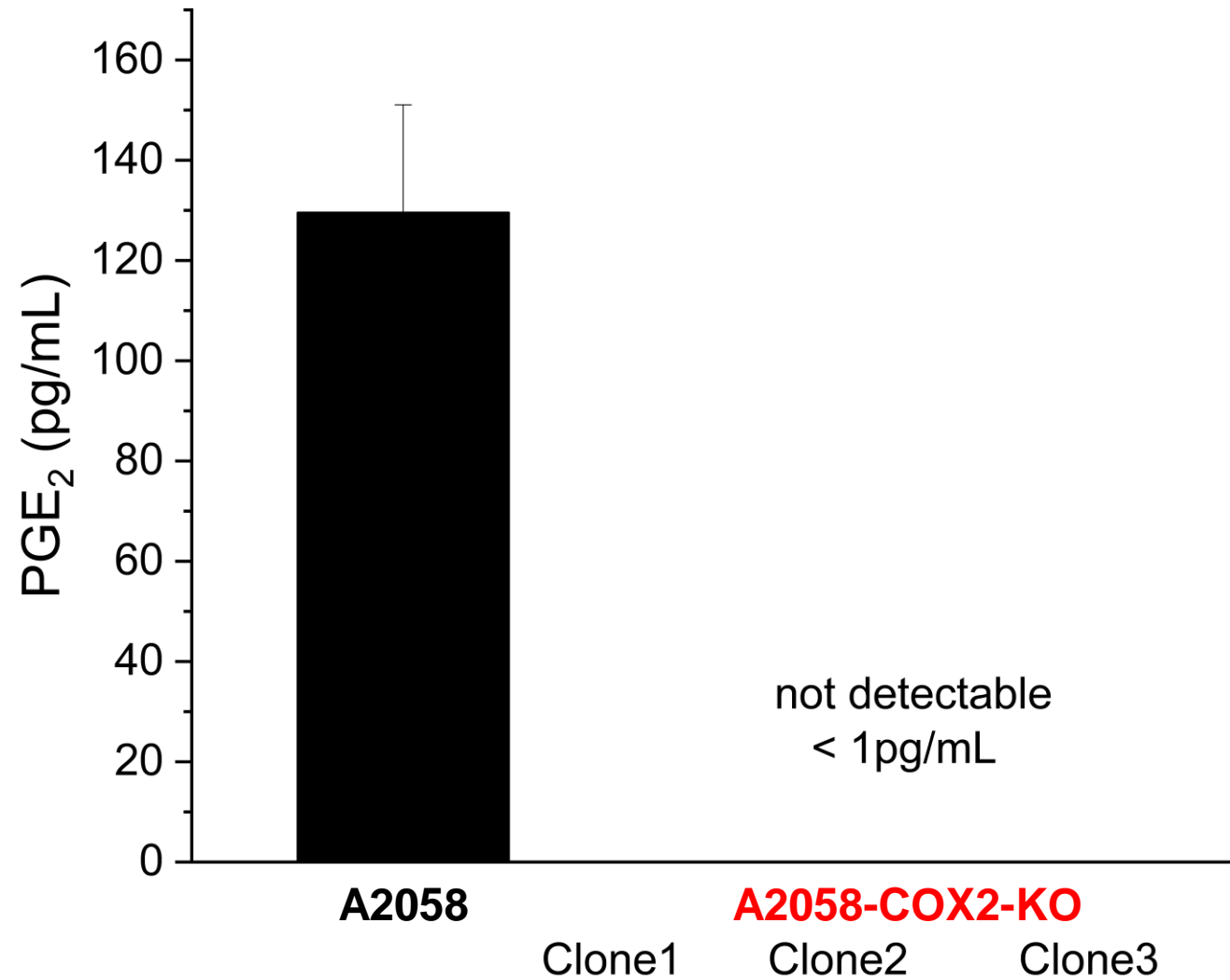


Figure S3: Analysis of cellular growth of A2058 and three different clones of A2058-COX-2KO (ACKO) cells using a CASY1 cell counter.

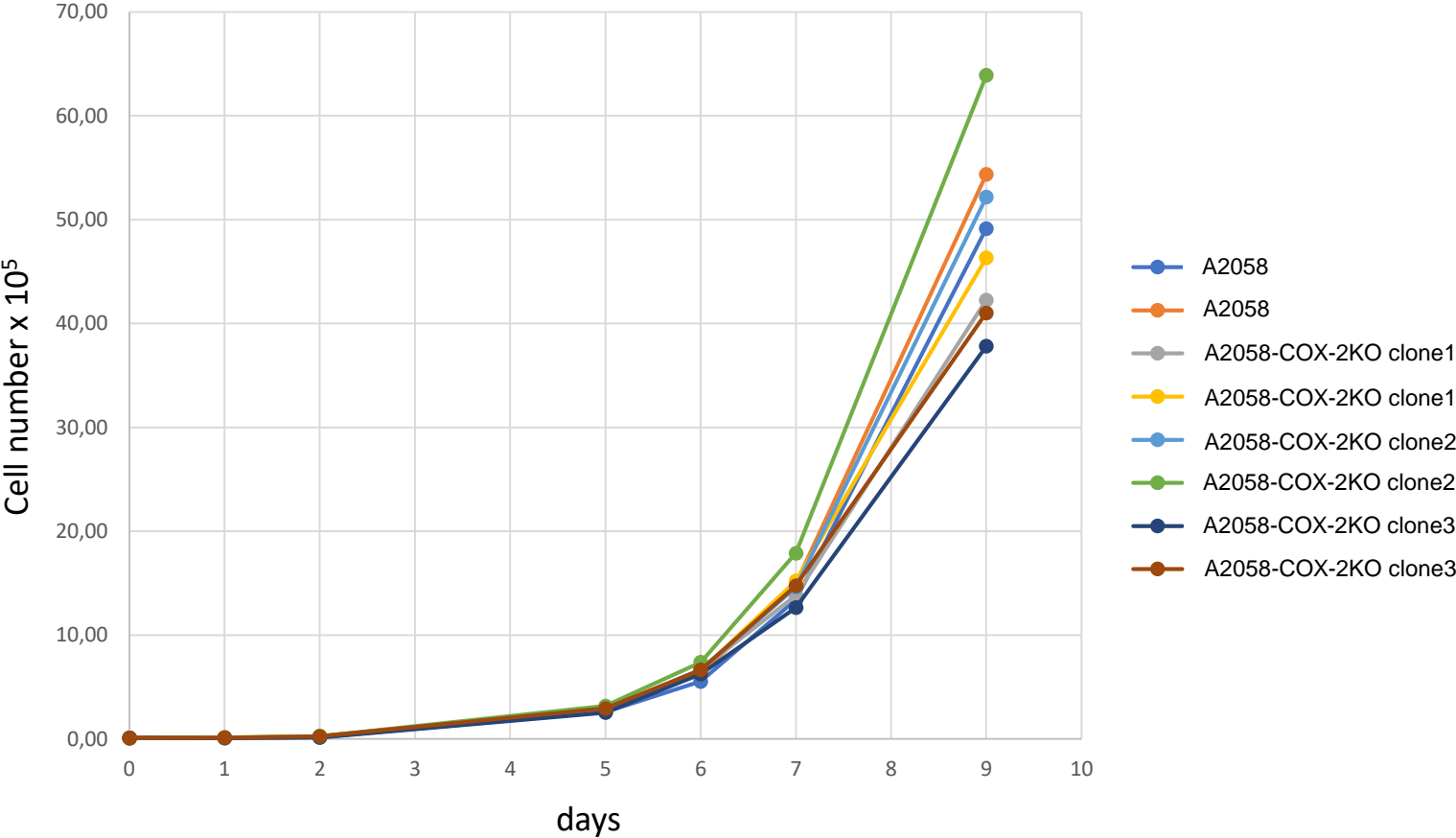


Figure S4: Tumor growth rate and progression analysis after the subcutaneous injection of two additional clones of A2058-COX-2KO cells in NMRI-nude mice.

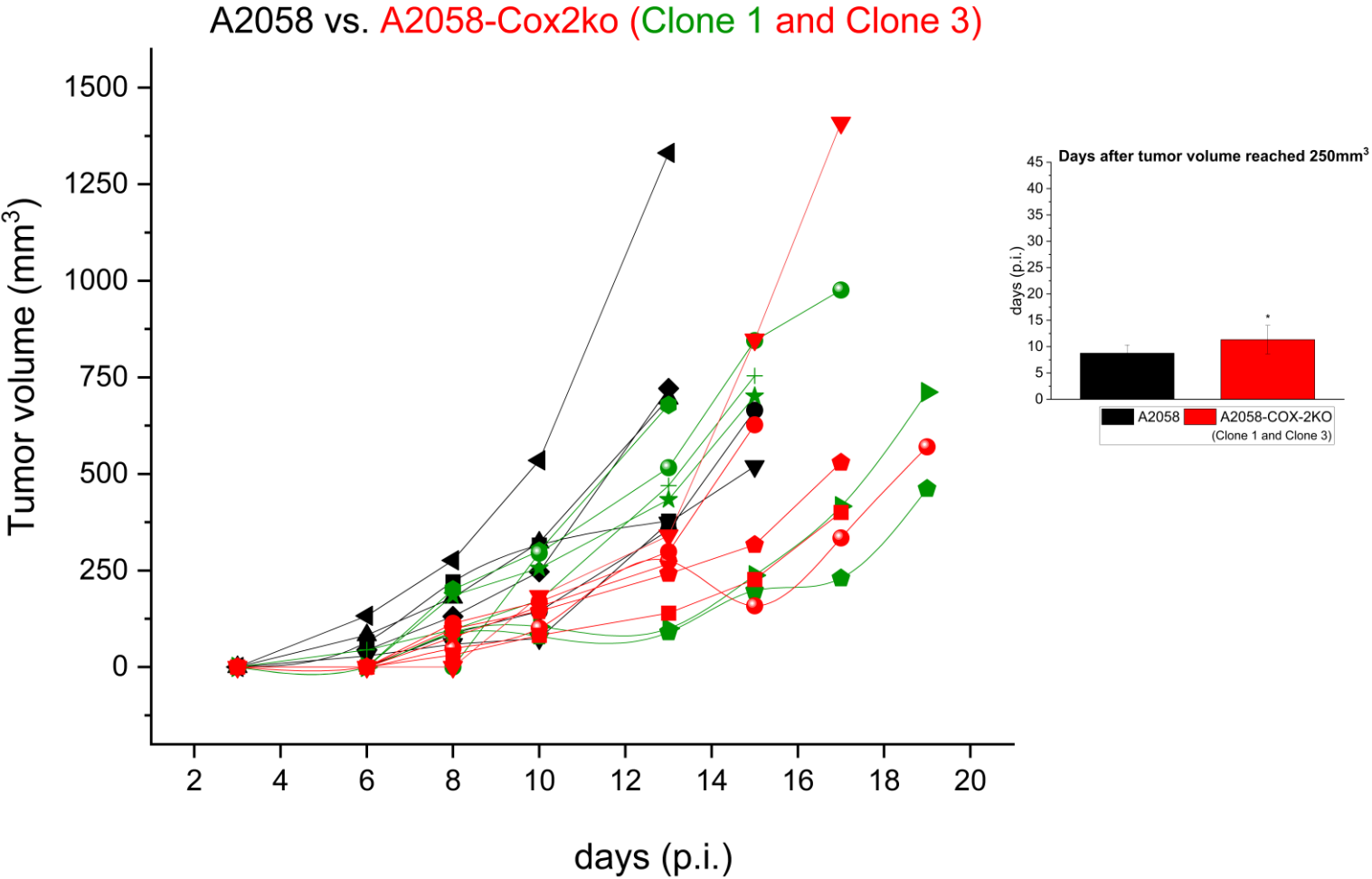
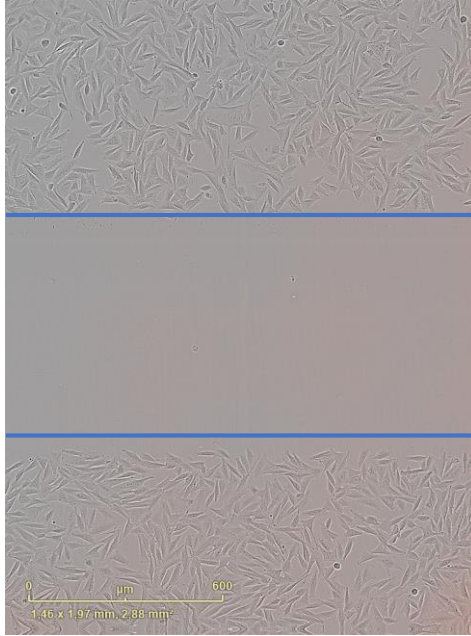


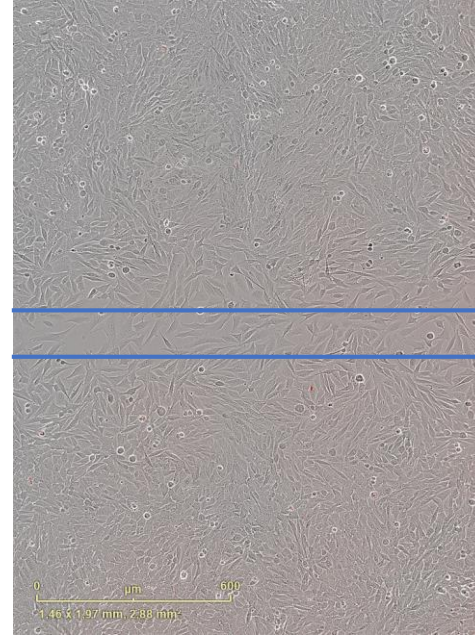
Figure S5: Representative images of scratch migration assay of A2058 and A2058-COX-2KO with 10% FCS.

A2058

0 h



24 h



96 h

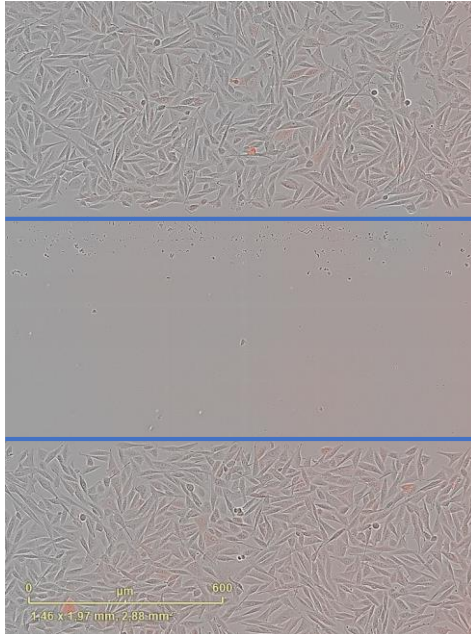


156 h

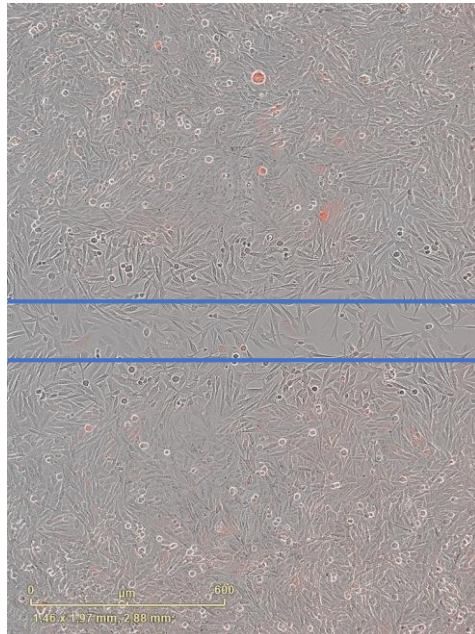


A2058-COX-2KO

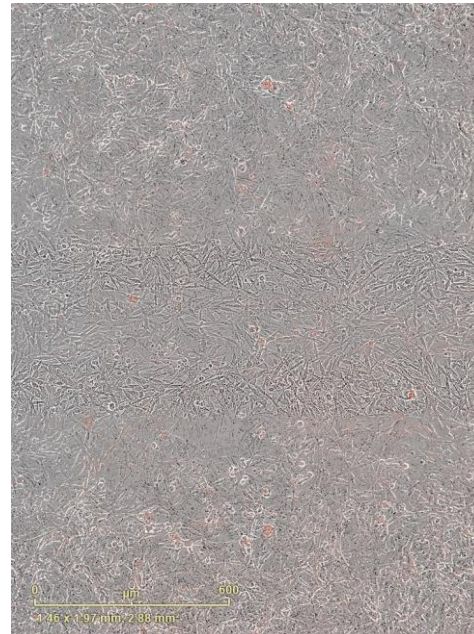
0 h



24 h



96 h



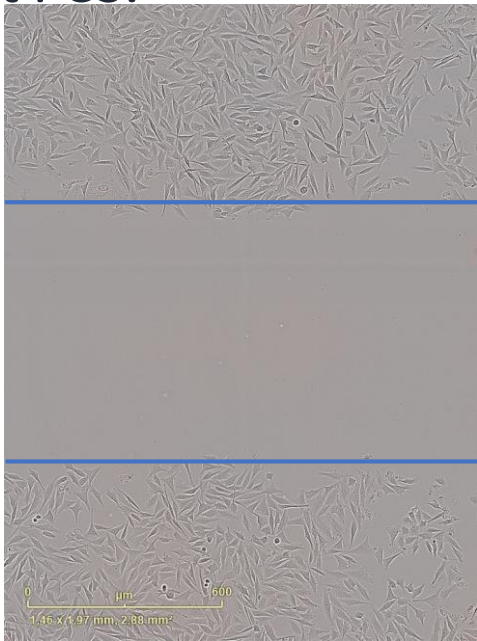
156 h



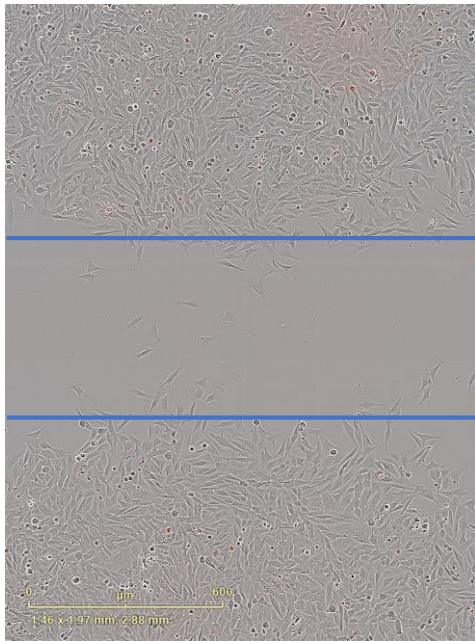
Figure S6: Representative images of scratch migration assay of A2058 and A2058-COX-2KO without FCS.

A2058

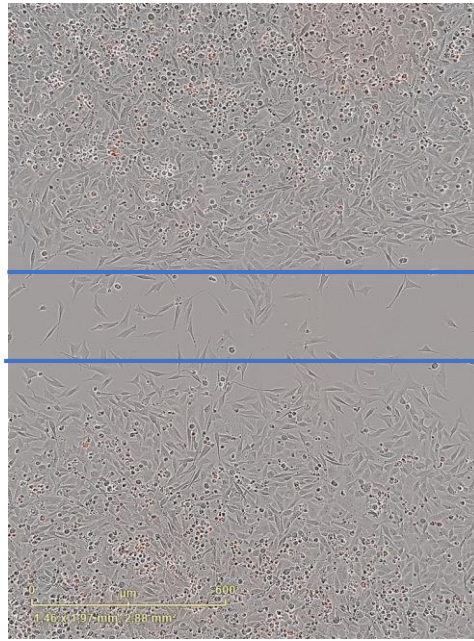
0 h



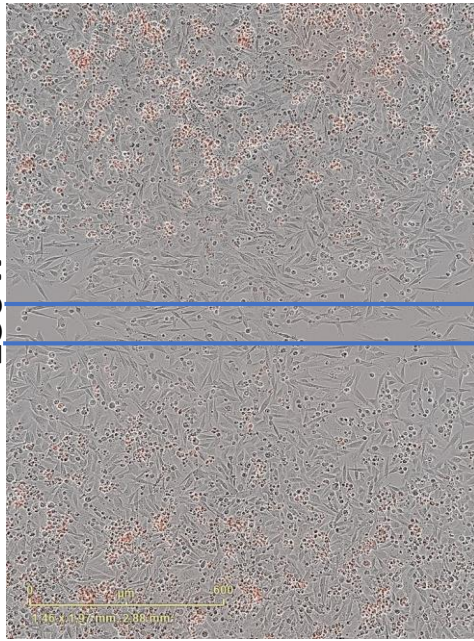
24 h



96 h

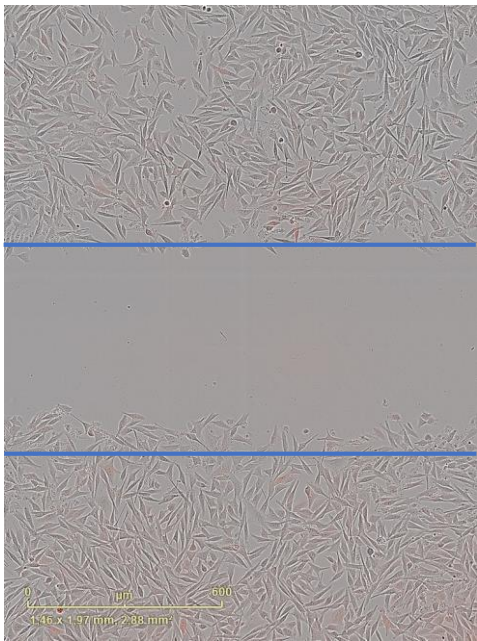


156 h

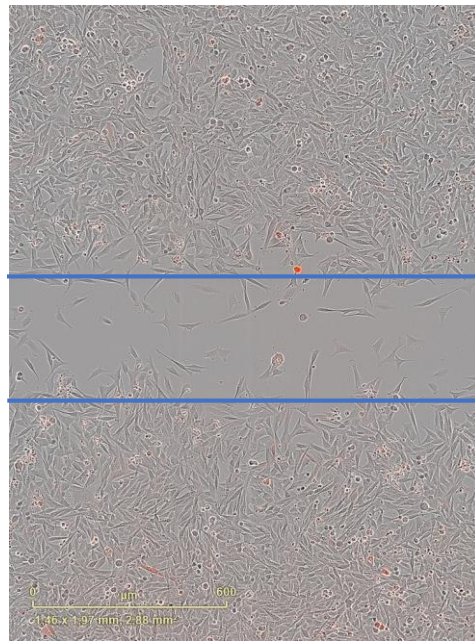


A2058-COX-2KO

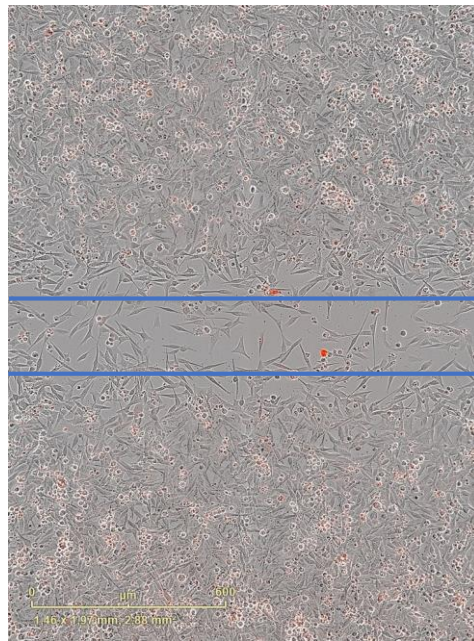
0 h



24 h



96 h



156 h

