

Figure S1. Representative immunohistochemistry illustrations of neurologically normal control cases showing no abnormal α -synuclein deposits when treated with various α -synuclein antibodies. Scale bar 50 μ m in all.

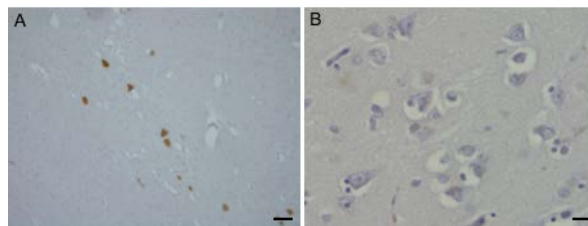


Figure S2. Immunohistochemistry of brain sections from IPD cases showing no appreciable staining within PD nigra (A) or frontal cortex (B) when primary antibodies were omitted but treated with anti-rabbit and anti-mouse secondaries respectively. Scale bar 60 μ m in A, 15 μ m in B.