

Figure S2. Effect of crocin on the IKBa/p-IKBa ratio in human colon cancer cells. (A) HT-29 cells (B) Caco-2 cells treated with 10, 20 and 40 µg/mL of crocin for 24 h. Cell lysates were analyzed by western blotting and IKBa and p-IKBa protein bands were detected using specific antibodies. Densitometric quantification of the autoradiograms for IKBa and p-IKBa was performed, and the IKBa/p-IKBa ratio was calculated. The data were described as mean ± SD, *n* = 3. Asterisks indicate significant difference compared to control (* *p* < 0.05).

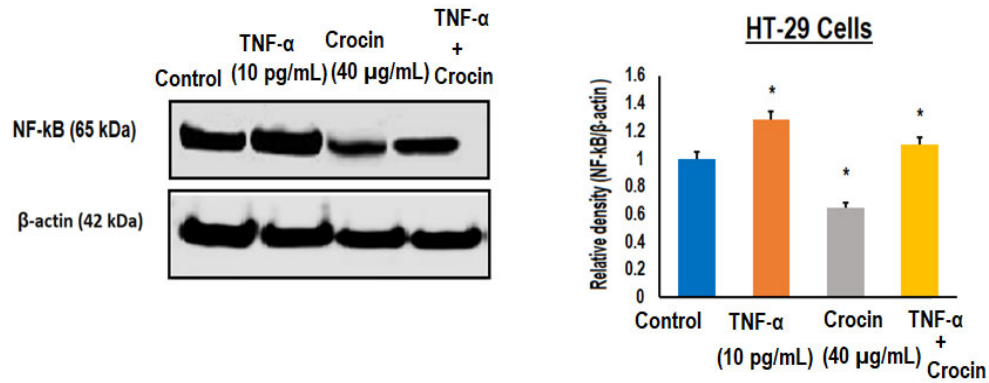


Figure S3. Effect of crocin on TNF- α induced NF- κ B activation in HT-29 colon cancer cells. HT-29 cells were treated with 10 pg/mL concentration of TNF- α , 40 μ g/mL of crocin and combination of TNF- α and crocin for 24 h. Cell lysates were analyzed by western blotting and NF- κ B and β -actin protein bands were detected using specific antibodies. Densitometric quantification of the autoradiograms for NF- κ B and β -actin was performed, and the relative density of NF- κ B/ β -actin ratio was calculated. The data were described as mean \pm SD, $n = 3$. Asterisks indicate significant difference compared to control (* $p < 0.05$).

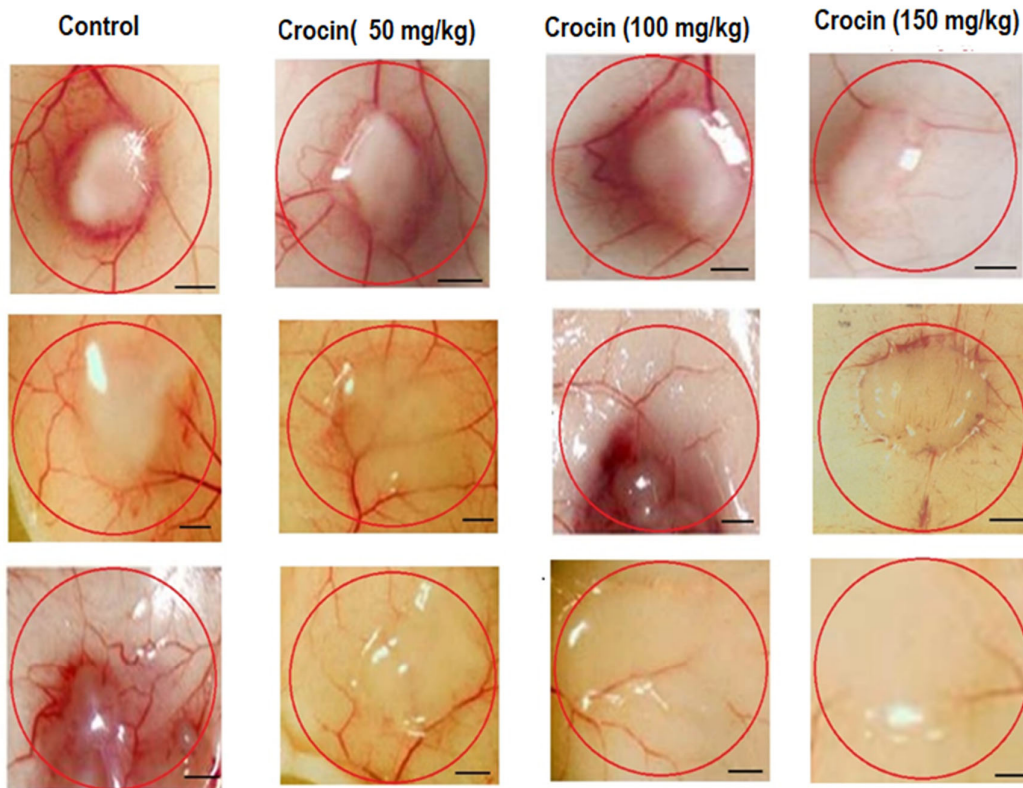


Figure S4. Effect of crocin on tumour induced angiogenesis. Induction of tumour induced angiogenesis, HT-29 cells (1×10^6) were implanted and new blood vessels formation was evaluated after 7 days by light microscope. (A) The effect of crocin on inhibition of tumour induced angiogenesis.

All data were expressed in mean \pm SD, $n = 6$, $p < 0.05$; $p < 0.01$ was considered significant. Scale bar = 50 μm .

Full Western-Blot Images of NF- κ B, I κ B α , P-I κ B α , VEGF, and β -actin Antibodies in HT-29 Cells and Caco-2 Cells

The band density and molecular weight of each antibodies are given in the Figure 5.

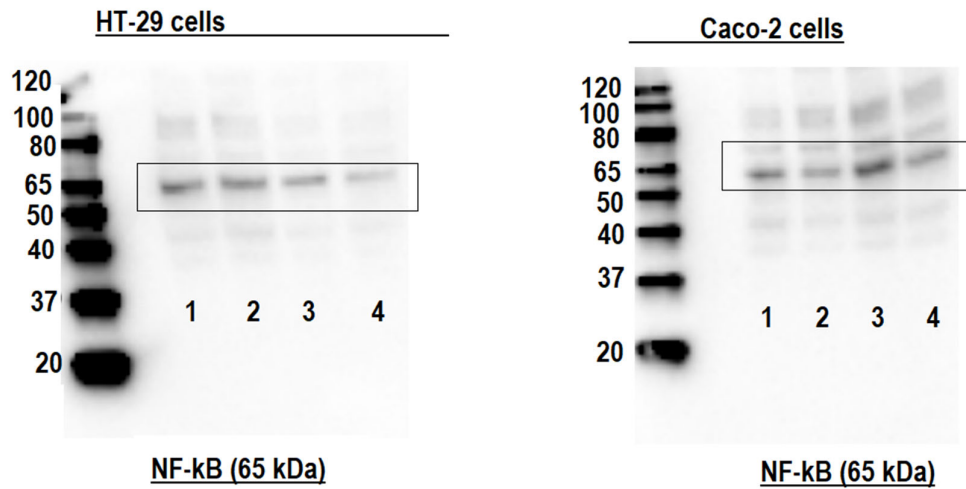


Figure S5. Full Western-blot Images of NF- κ B antibodies in HT-29 Cells and Caco-2 Cells.

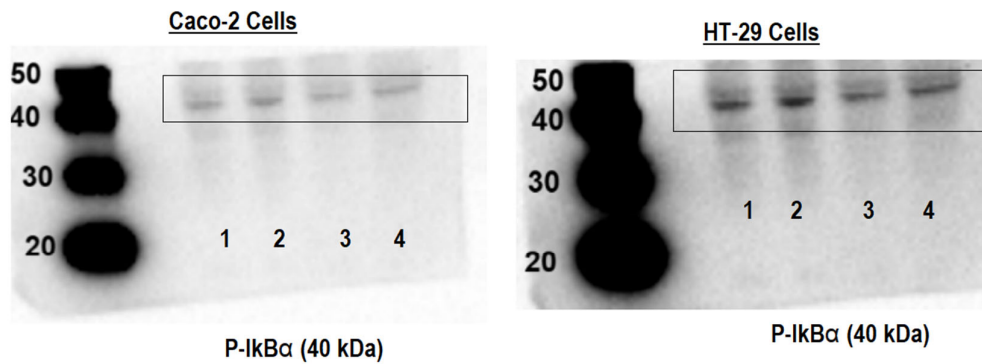


Figure S6. Full Western-blot Images of P-I κ B α antibodies in HT-29 Cells and Caco-2 Cells.

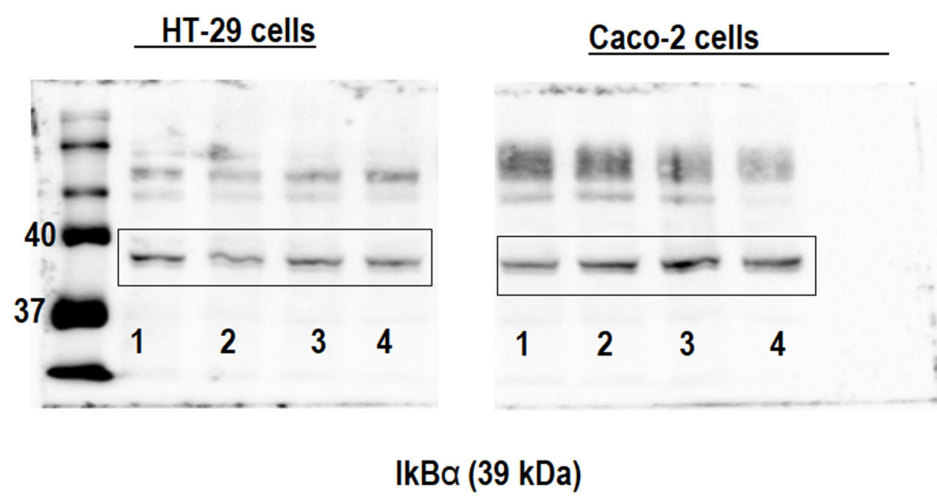


Figure S7. Full Western-blot Images of IkB α antibodies in HT-29 Cells and Caco-2 Cells.

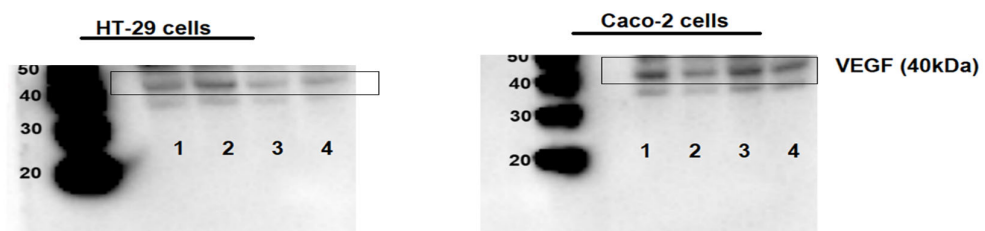


Figure S8. Full Western-blot Images of VEGF antibodies in HT-29 Cells and Caco-2 Cells.

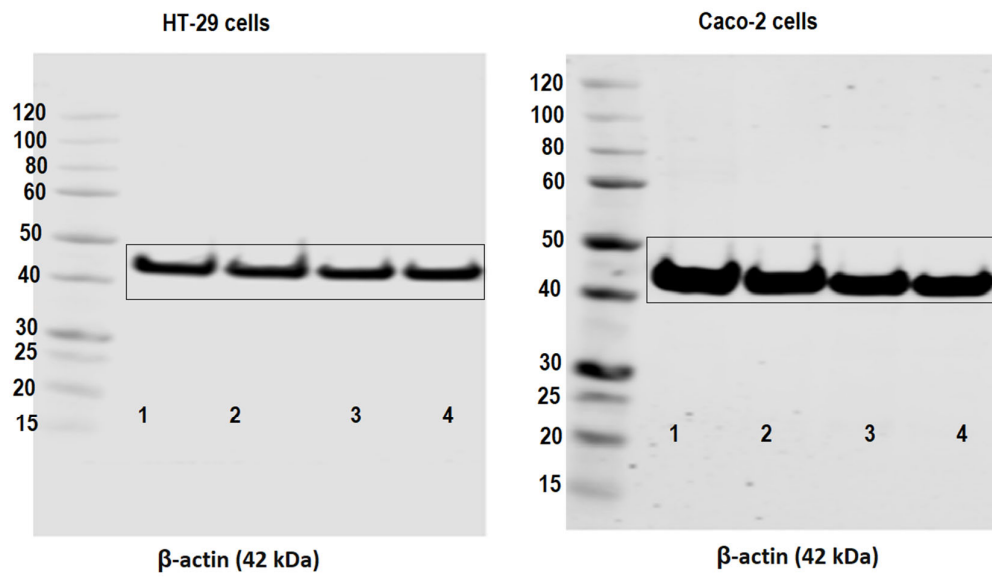


Figure S9. Full Western-blot Images of β -actin antibodies in HT-29 Cells and Caco-2 Cells.