

Epidural catheterization & LSS induction

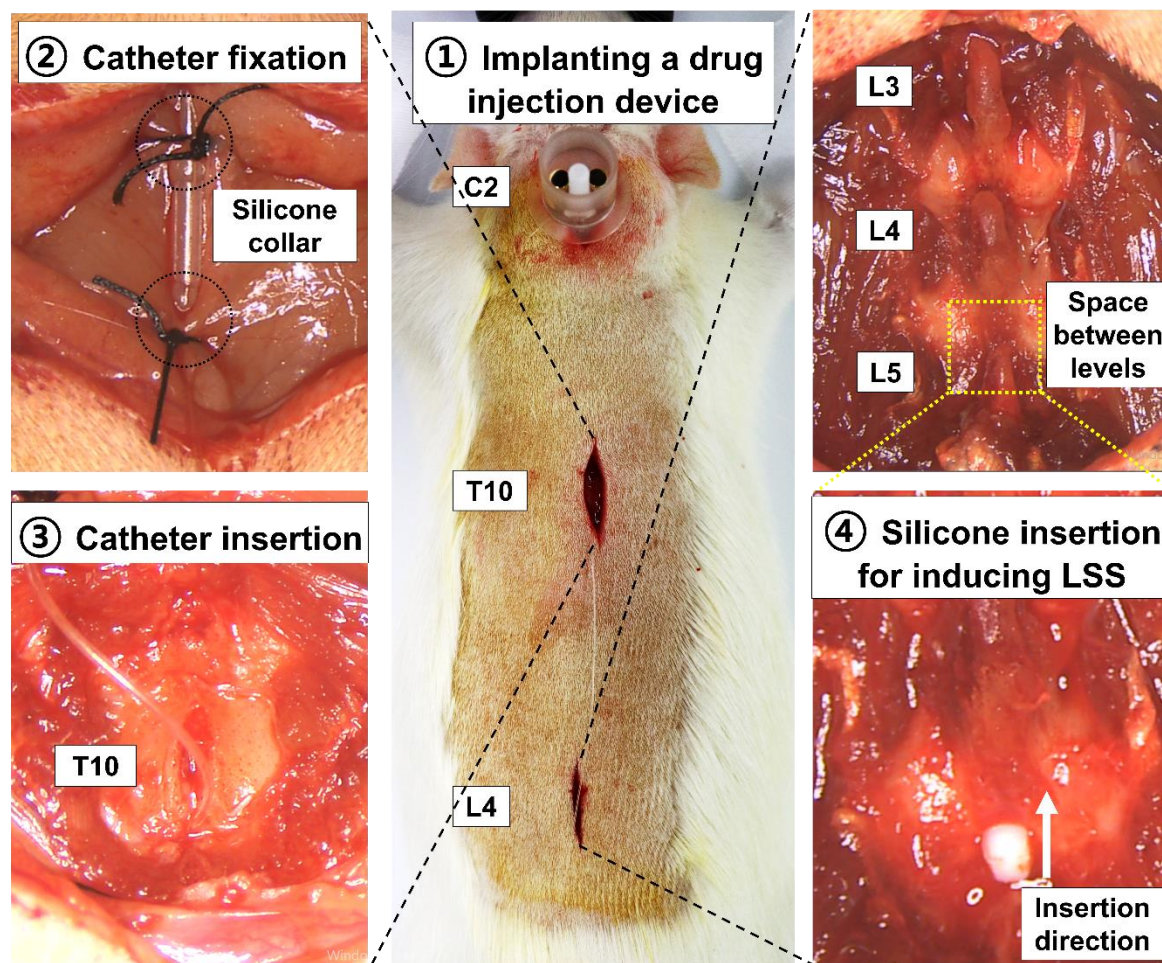


Figure S1. Images showing the surgical procedure of epidural catheterization and LSS induction. ① Implantation of drug injection device in C2 level. ② Fixation both sides of the silicone collar of the epidural catheter to the muscle. ③ Insertion of a catheter into the epidural space between the T10 and T11 levels. ④ Insertion of an 80 kpa silicone block into the spinal canal of L4 level for LSS induction.

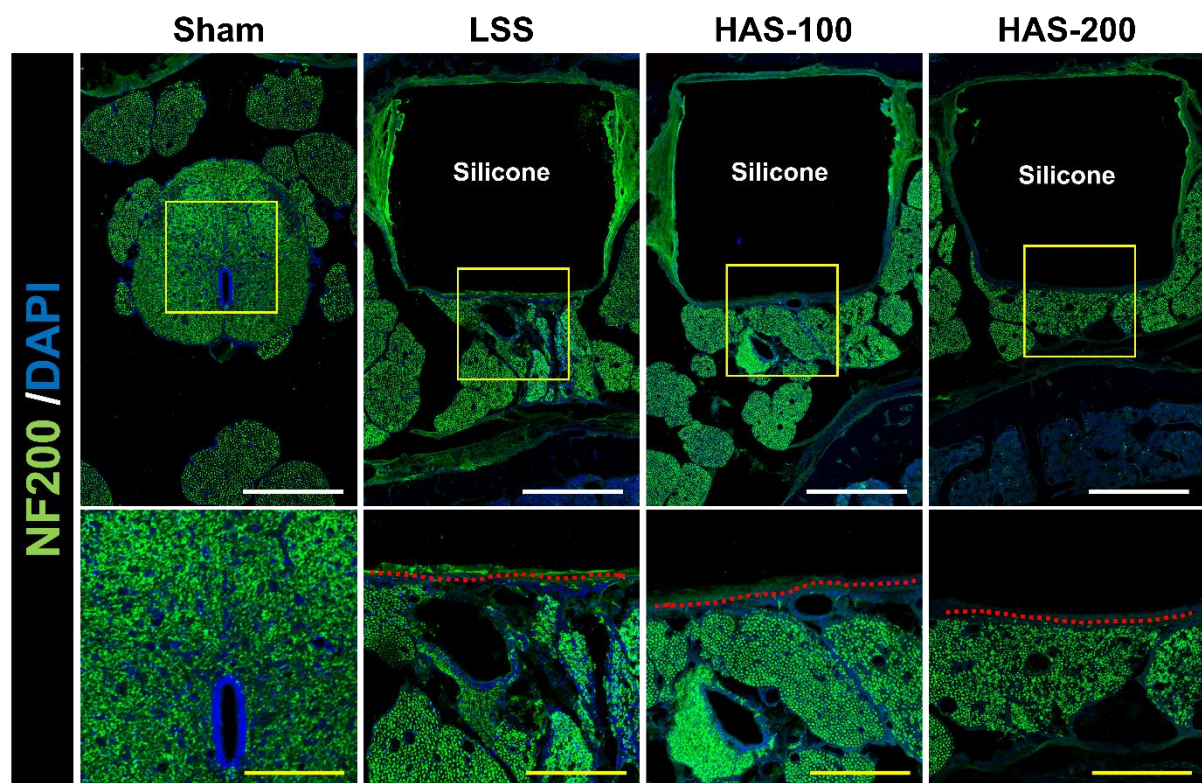


Figure S2. Representative IHC images of NF200 (green) in Sham, LSS, HAS-100, or HAS 200 groups. White scale bar = 500 μ m, Yellow scale bar = 200 μ m.