

Supplementary Materials

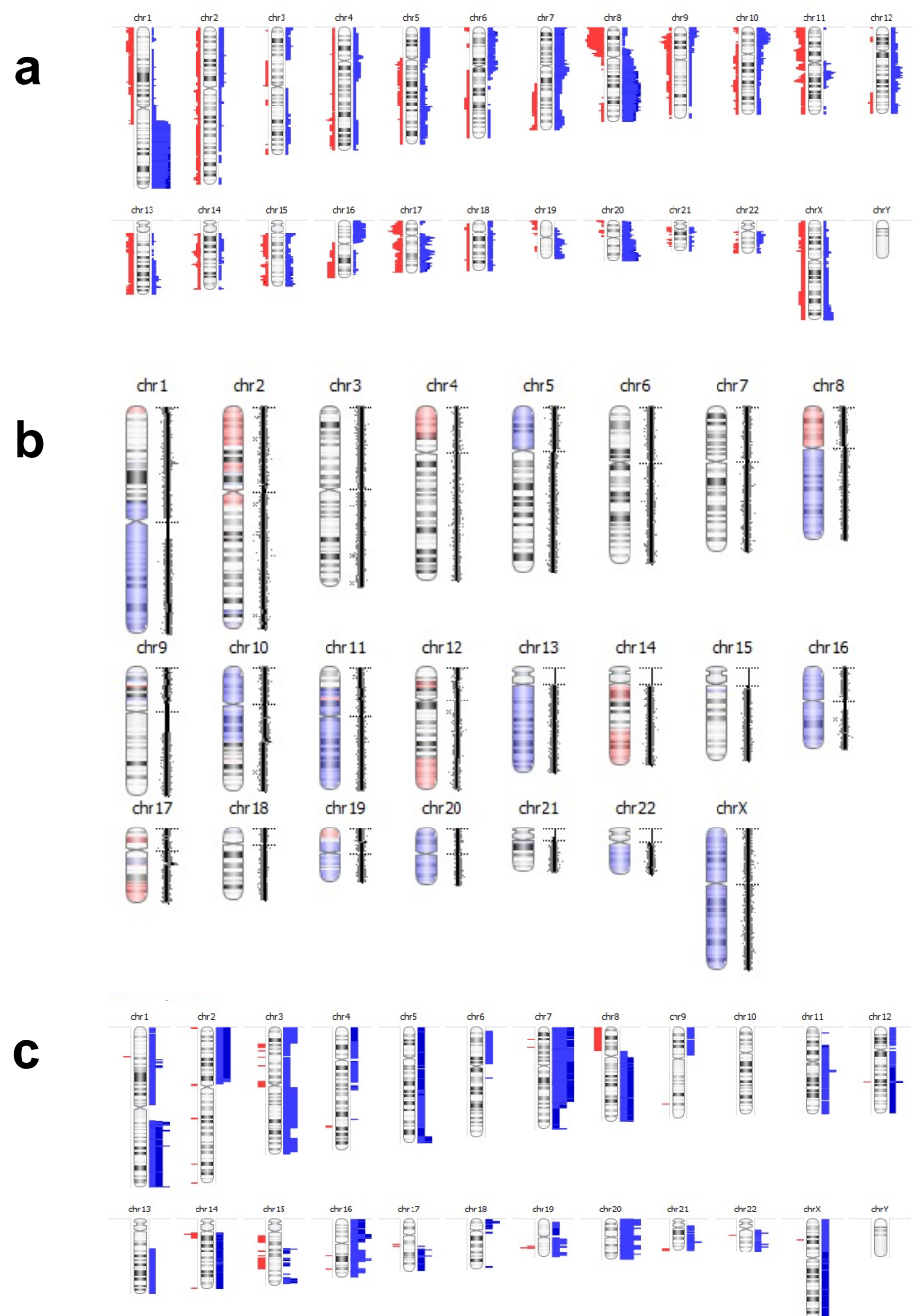


Figure S1. IBC CNV Chromatogram. (a) CNV Chromatogram for ER-positive IBC patients (n=8). (b) CNV Chromatogram HER2 Type IBC patient (n=1). (c) CNV Chromatogram TNBC IBC patient (n=3).

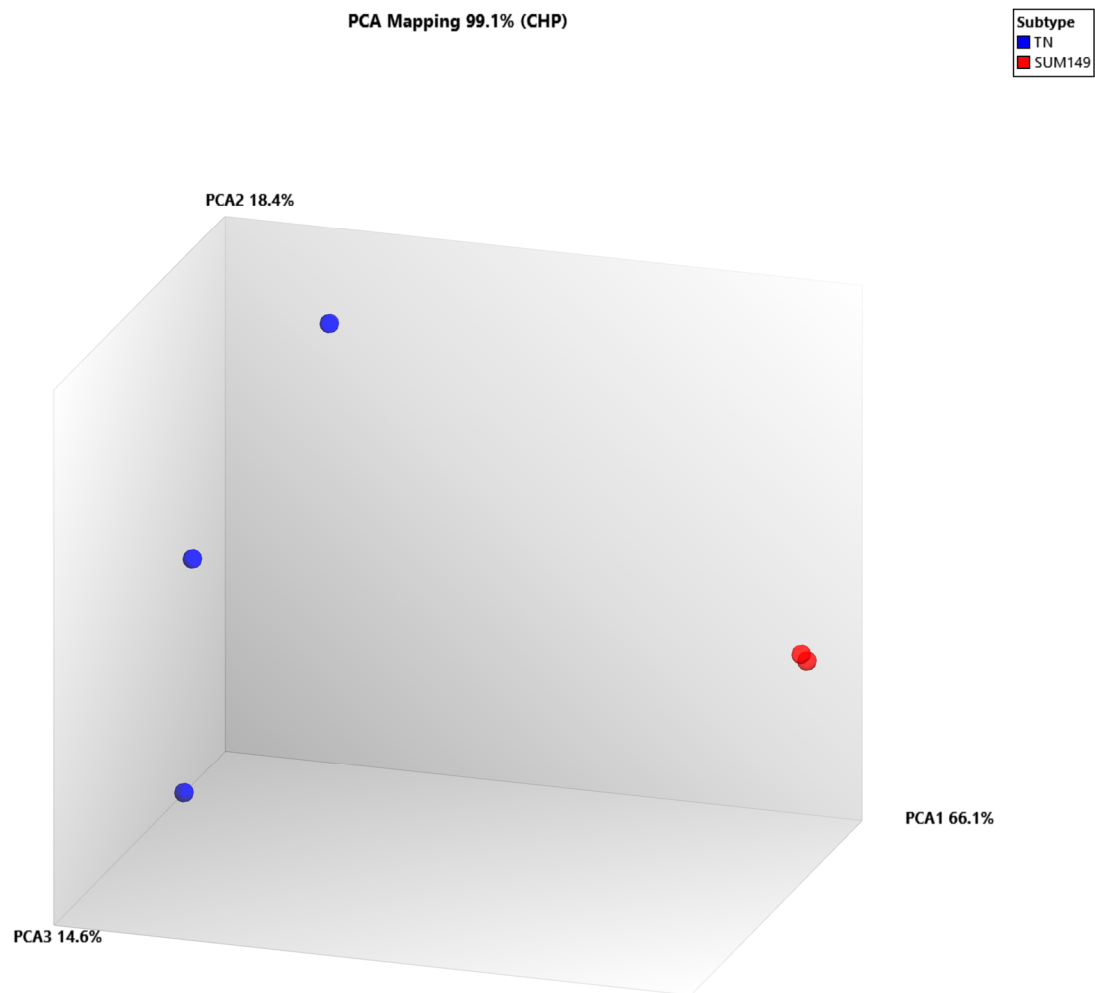


Figure S2. Principal Component Analysis (PCA) of TN-IBC samples compared to SUM149 cell line.