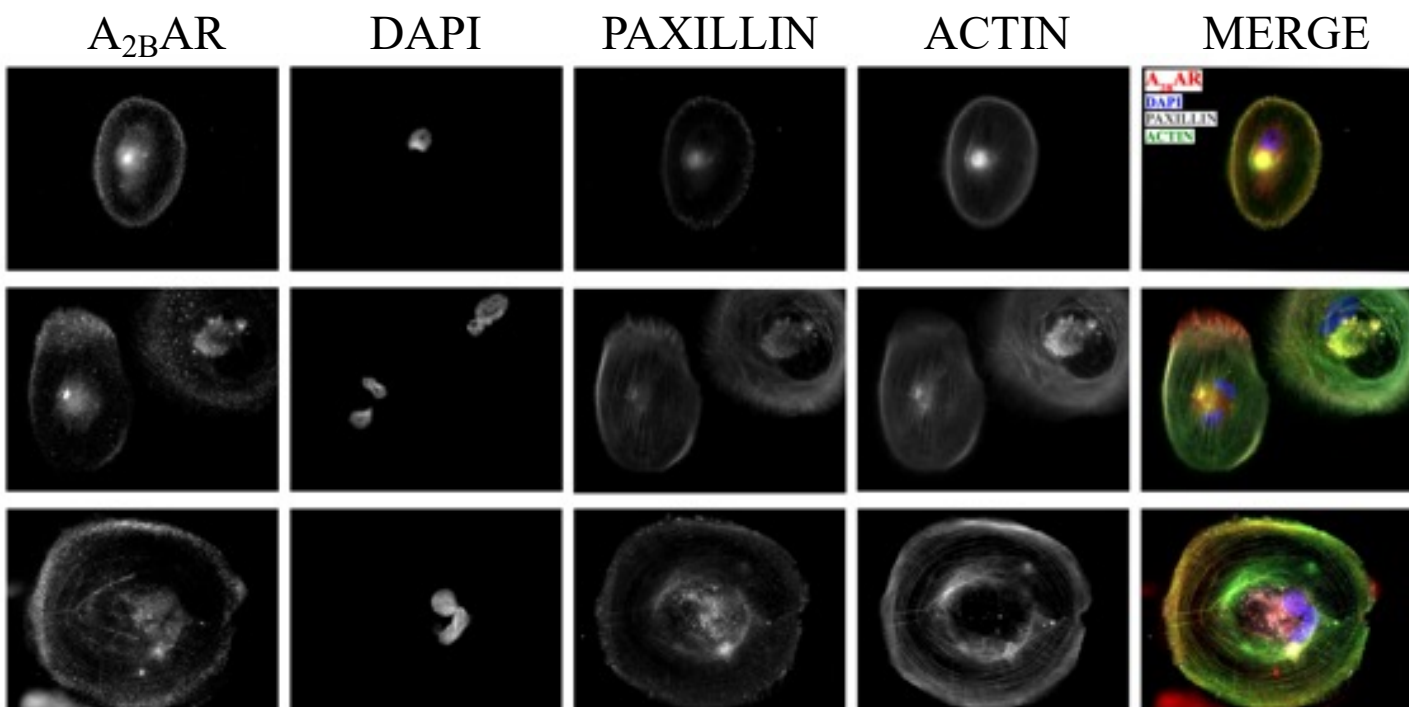
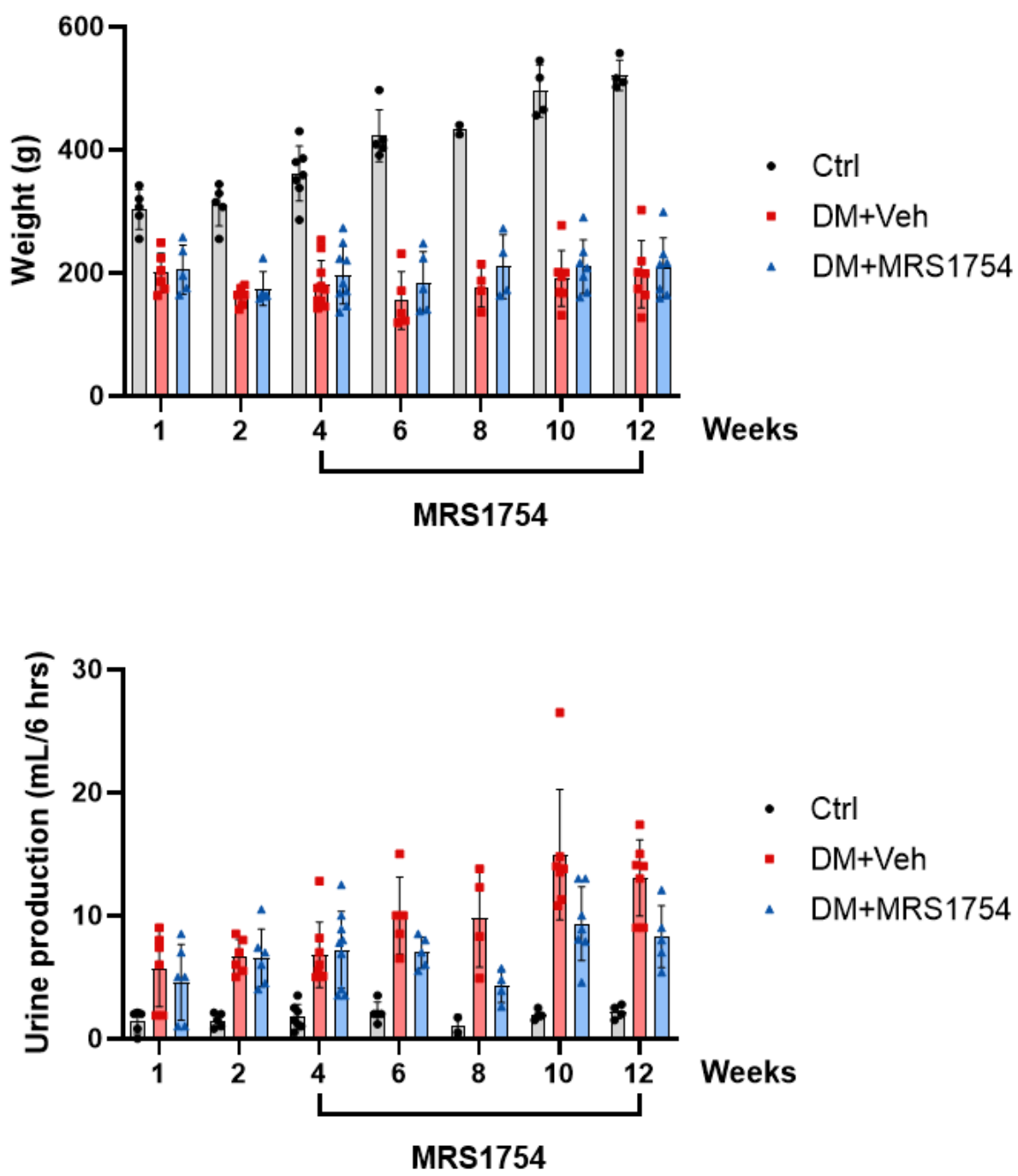


Supplementary Figure S1



Indirect immunofluorescence in human immortalized podocytes for the detection of A_{2B}AR. Podocytes differentiated 30 days were seeded on laminin-coated coverslips, allowed to spread during 40 minutes, fixed and subjected to immunostaining as indicated in the methods section. The distribution pattern of A_{2B}AR appears mostly perinuclear and at the cell's periphery in lamellipodium. Representative images were captured by epifluorescence microscopy.

Supplementary Figure S2



Physiological parameters of rats used in the study.