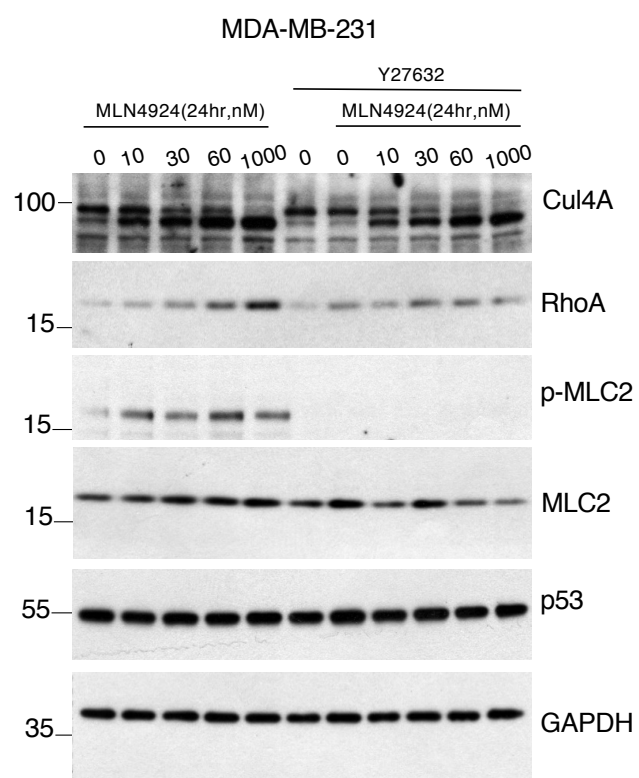


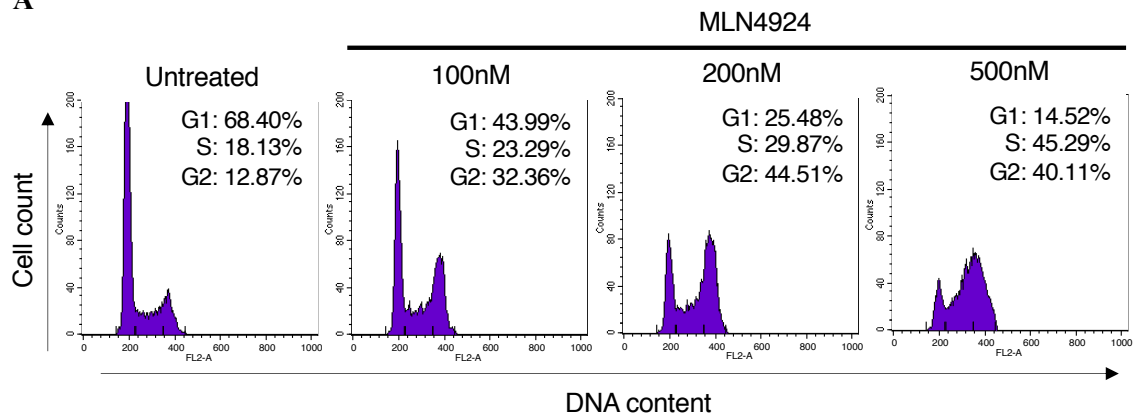
**Supplementary Figure S1, related to Figure 1.** Extracts from the experiment performed in Fig. 1B were used for western blot analysis using anti-p53 antibodies (DO-1) and anti-tubulin as loading marker. Intensity of p53 bands was normalized against tubulin signal and presented as the ratio for each condition using the cntr as reference.



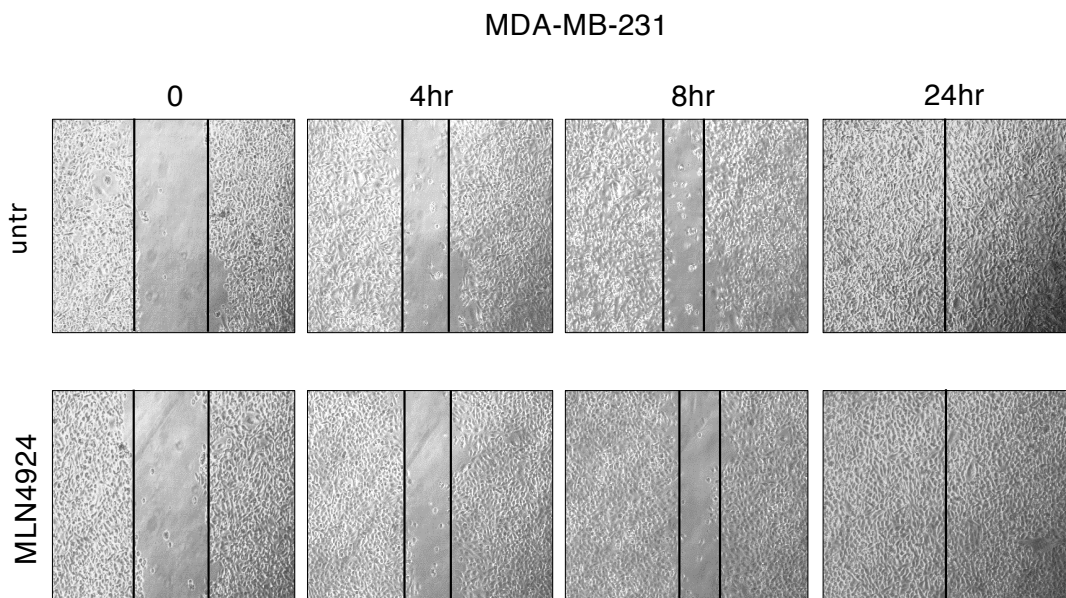
**Supplementary Figure S2, related to Figure 3.** Experiment performed as in Figure 3E, in MDA-MB-231 cells.

S3

A



B



**Supplementary Figure S3, related to Figure 7. A.** Cell cycle analysis of A375 cells treated with the indicated concentration of MLN4924 for 24hr. **B.** Untreated (untr-DMSO) or MLN4924 treated (100nM) MDA-MB-231 cells were used in a 2D migration assay as described in Materials and Methods. Black lines indicate the gap between cells filled over the indicated period of time.