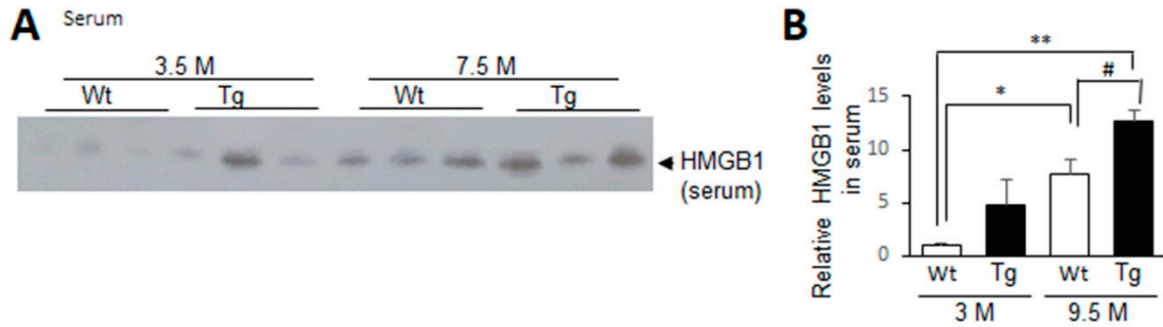
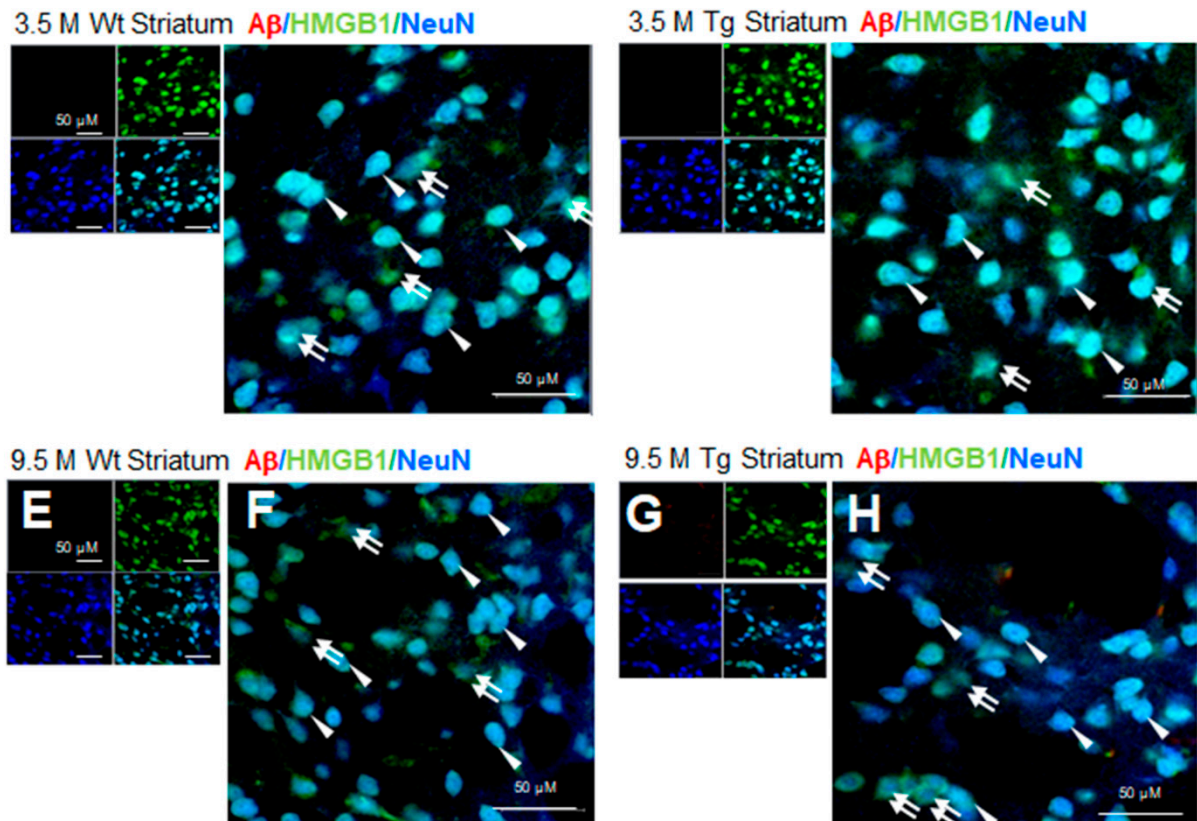


Supplementary materials



Supplementary Figure S1. HMGB1 protein levels in the serum of 3.5 M and 7.5 M Tg-APP/PS1 and age-matched control mice

Protein samples were prepared from the sera of Tg-APP/PS1 or age-matched Wt mice at 3.5 or 7.5 M of age, and HMGB1 protein levels were determined by immunoblotting. Representative immunoblots are presented in A, and quantification results are presented as means \pm SEMs ($n=3$ for 3.5 M and $n=5$ for 9.5 M) in B. * $p < 0.05$, ** $p < 0.01$ vs. 3.5 M Wt, # $p < 0.05$ between indicated groups.



Supplementary Figure S2. Cellular and subcellular localization of HMGB1 in striata of 3.5 and 9.5 M Tg-APP/PS1 and age-matched control mice

Coronal brain sections were prepared from 3.5 M (C and D) or 9.5 M Tg (G and H) and age-matched control (A, B, E, and F) mice. Triple immunofluorescence staining was performed using anti-Ab, anti-HMGB1, and anti-NeuN (A-H) antibodies. Arrowheads indicate the immunoreactivity of anti-HMGB1 in neurons (B, D, F, and H). Double arrows indicate immunoreactivity of anti-HMGB1 in NeuN-negative cells (B, D, F, and H). Scale bars represent 20 or 50 μm .