

Figure S1. H&E staining on Cl_2 -exposed murine eyeball. (a-b) H&E staining of Cl_2 -exposed murine eyeballs for 3 days. (c) IF staining of ROS (DCF-DA: Green), superoxide (DHE: Red), and DAPI (Blue). Scale bar, 50 μm .

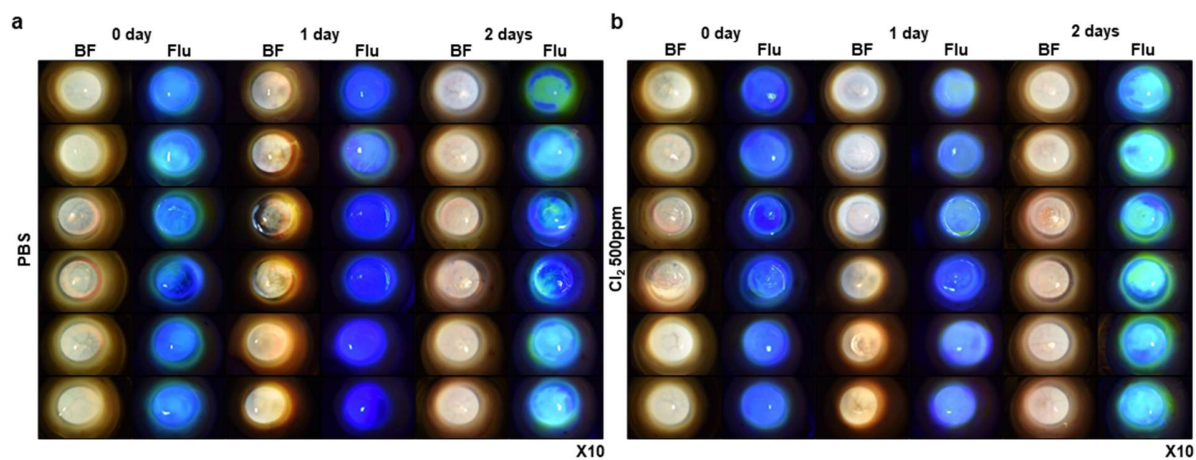


Figure S2. Fluorescein staining on the human cornea after Cl₂ exposure. (a-b) Representative images of human corneas showing fluorescein staining with or without 500ppm Cl₂ treatment for 3 days. BF: Bright field, Flu: Fluorescein.

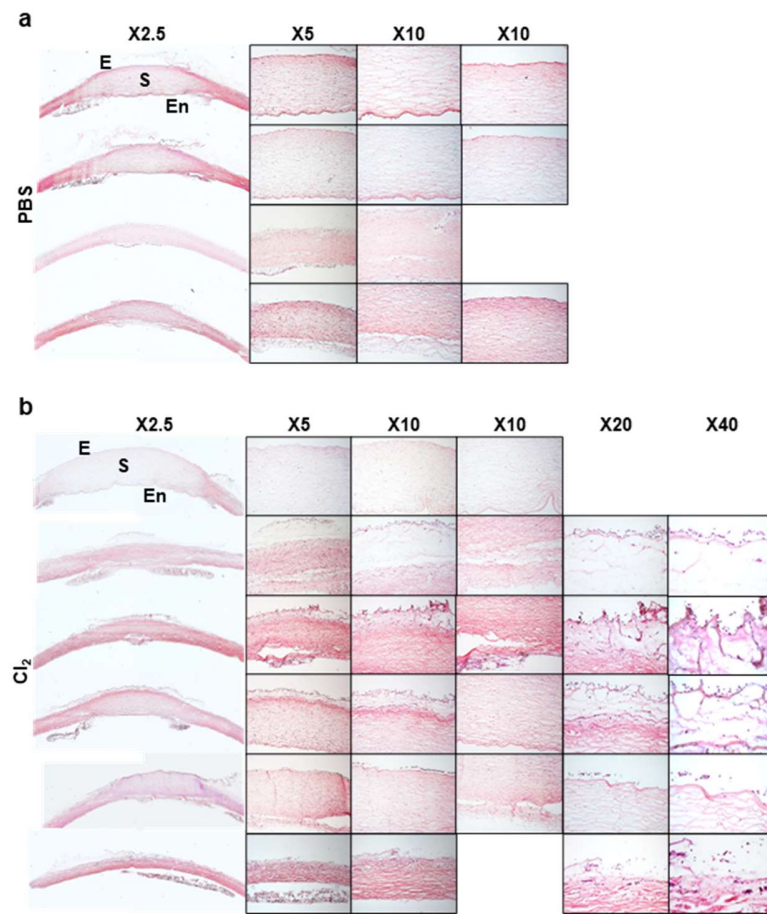


Figure S3. H&E staining on Cl_2 -exposed human corneas. (a-b) H&E staining of Cl_2 -treated human corneas. E: Epithelium, S: Stroma, En: Endothelium