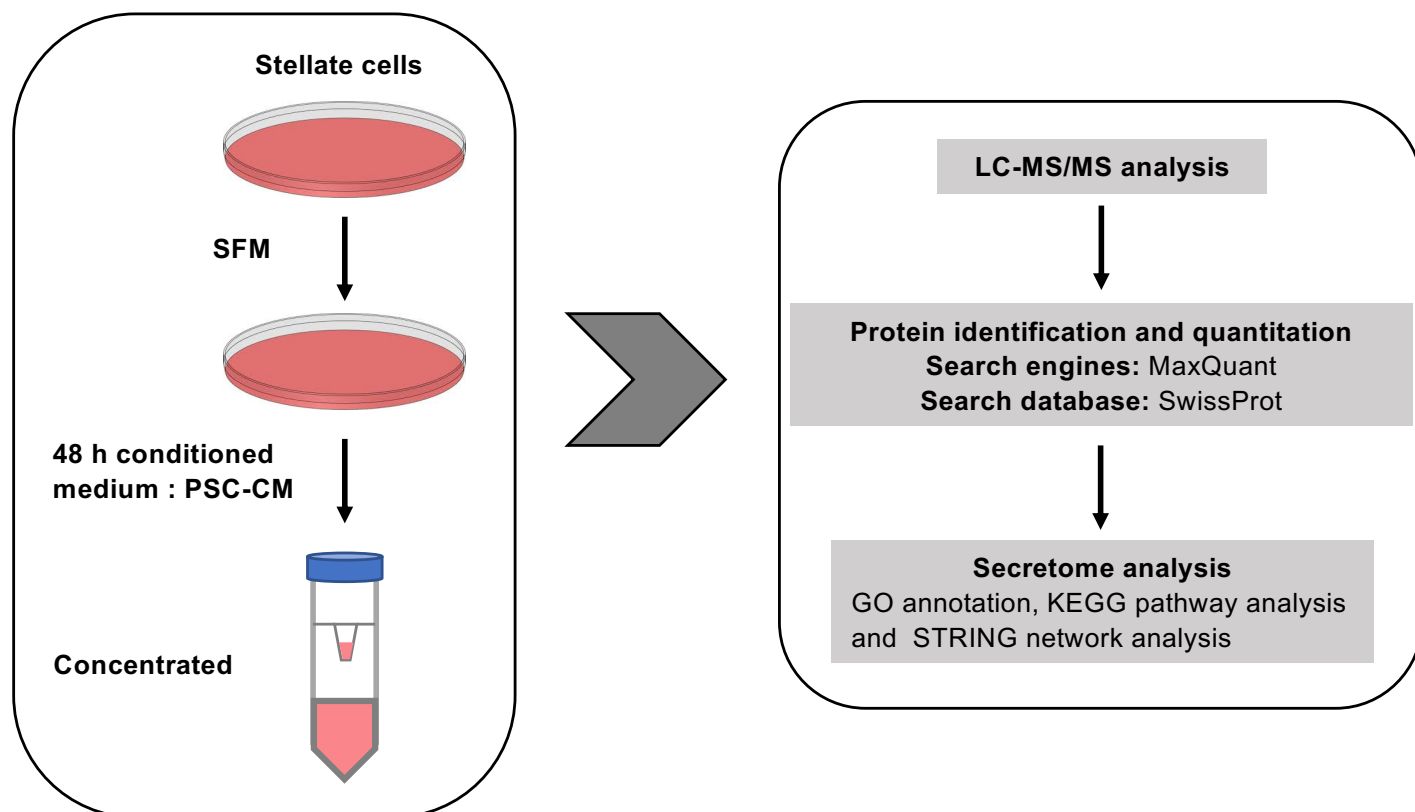
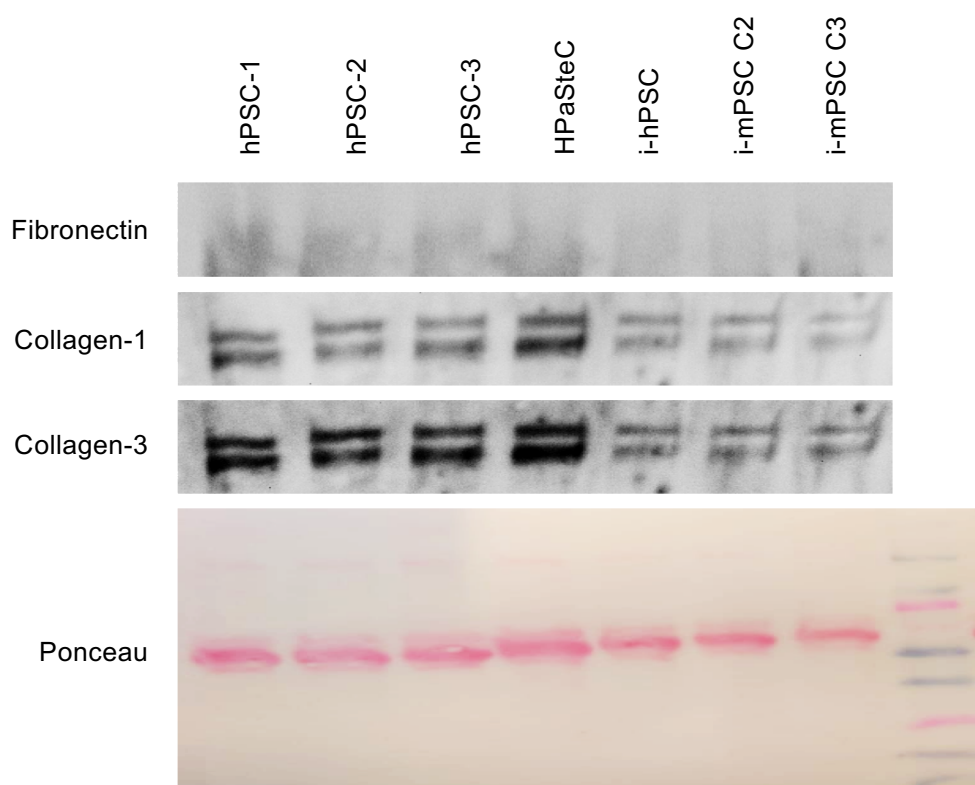


A



B



Supplementary Figure 1. Secretome analysis and protein identification. (A) Flow-chart describing procedure for conditioned medium collection, processing and analysis for proteome of secretome. PSC-CM, pancreatic stellate cell conditioned medium, SFM, serum-free DMEM. (B) The conditioned media samples (~5 ml) were concentrated down to 250 μ l using 10 kDa cut off Amicon Ultra centrifugal filter devices. Further the proteins were evaluated for immunoblotting using antibodies from Abcam (Cambridge, UK): anti-Fibronectin (ab2413), anti-Collagen 1 (ab34710), anti-Collagen 3 (ab7778). Ponceau staining is shown for loading control.