

Supplementary file

Diversity of the Senescence Phenotype of Cancer Cells Treated with Chemotherapeutic Agents

Agnieszka Bojko ^{1,†}, Joanna Czarnecka-Herok ^{1,†}, Agata Charzynska ², Michal Dabrowski ², and Ewa Sikora ^{1,*}

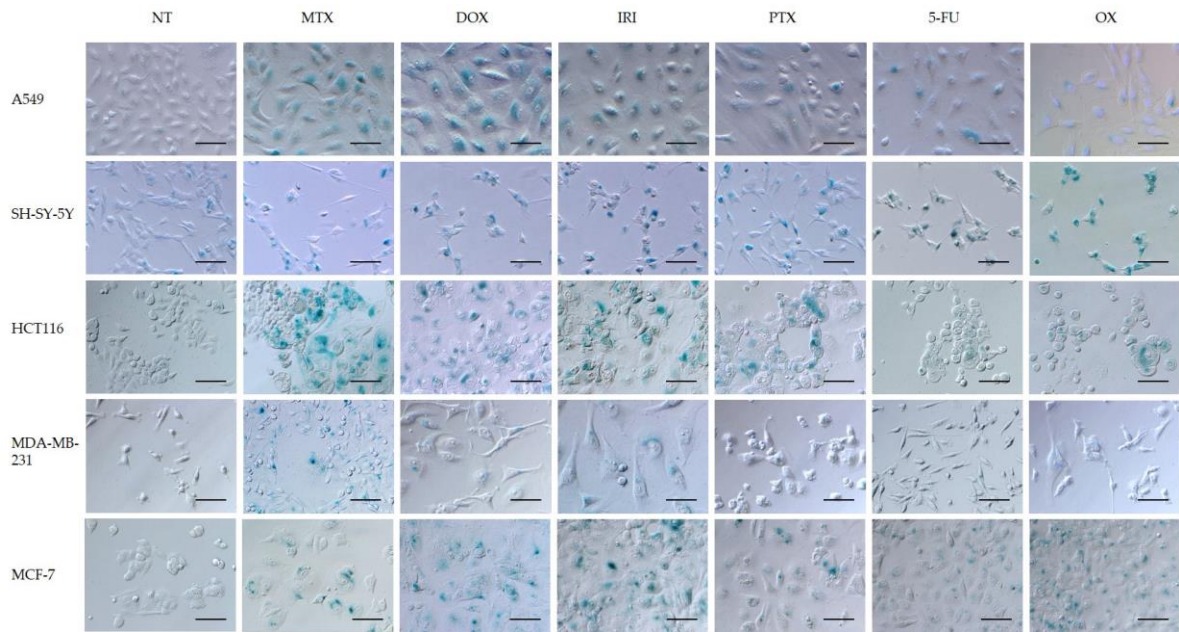


Figure S1. SA-β-galactosidase activity of treated cells at D1+3. Senescent cells are characterized by accumulation of SA-β-gal within cytoplasm (blue staining), as well as enlarged size and flattened morphology. Scale bar = 100 μm.

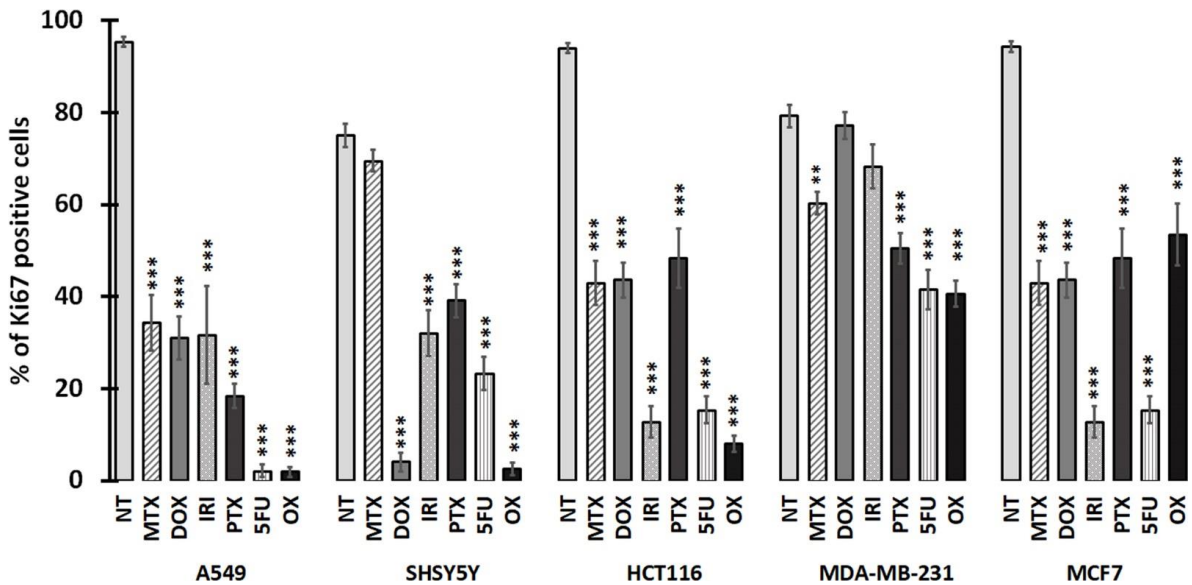


Figure S2. Percentage of Ki67-positive cells after treatment with tested drugs at D1+3. The bars represent mean values of at least three independent experiments ± SEM. Statistical significance (in relation to control): * 0.01 < p < 0.05; ** 0.001 < p < 0.01 *** p < 0.001. NT: nontreated cells.