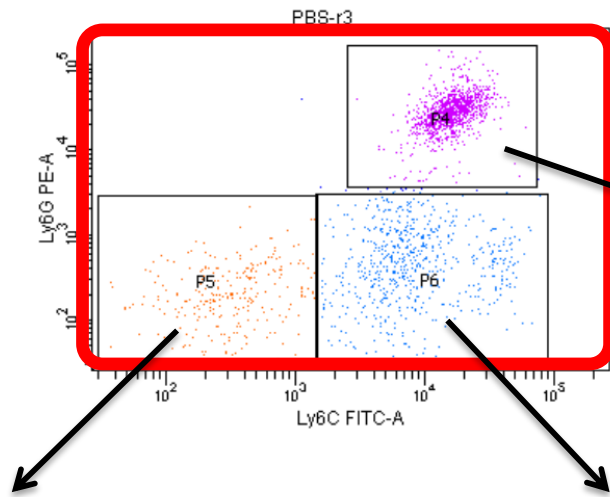
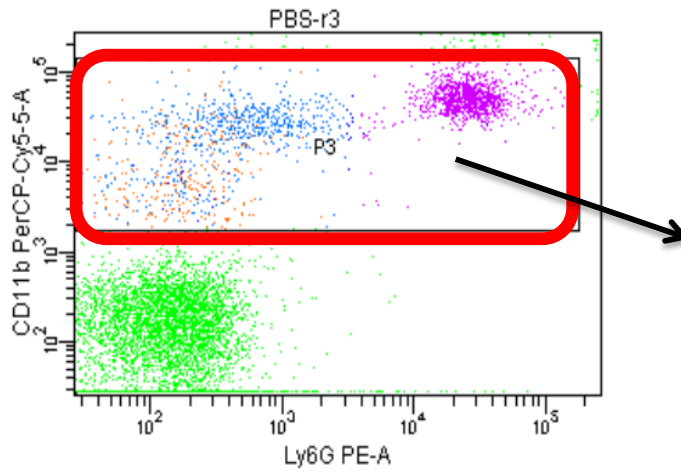


Figure S1

A



CD11b<sup>+</sup>Ly6G<sup>-</sup>Ly6C<sup>-</sup> MDCs

CD11b<sup>+</sup>Ly6G<sup>-</sup>Ly6C<sup>+</sup> M-MDSCs

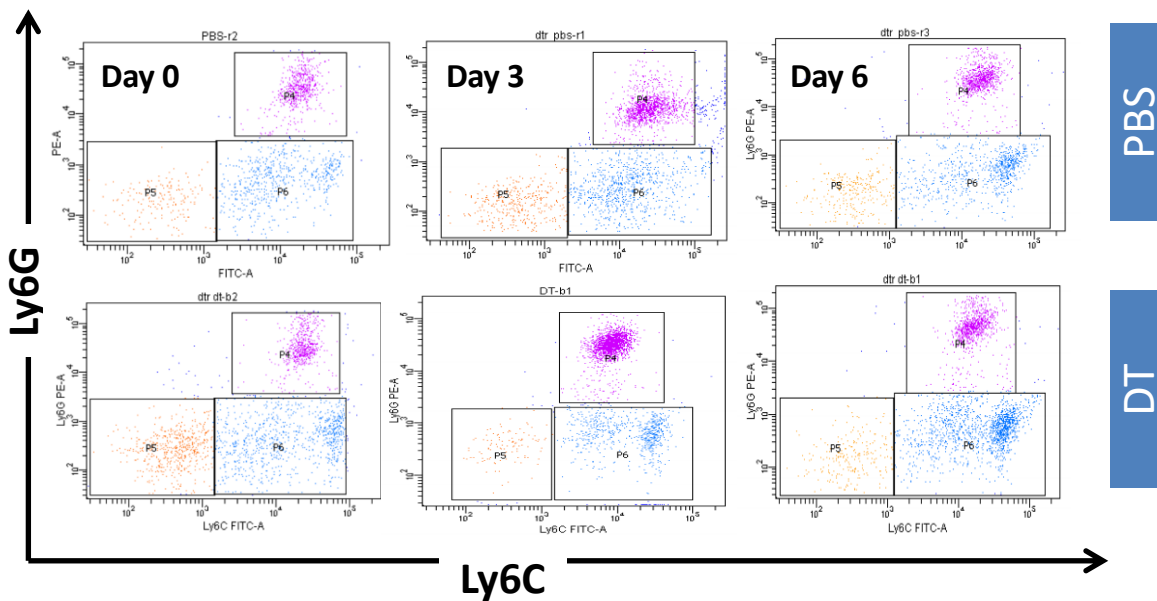


Figure S2

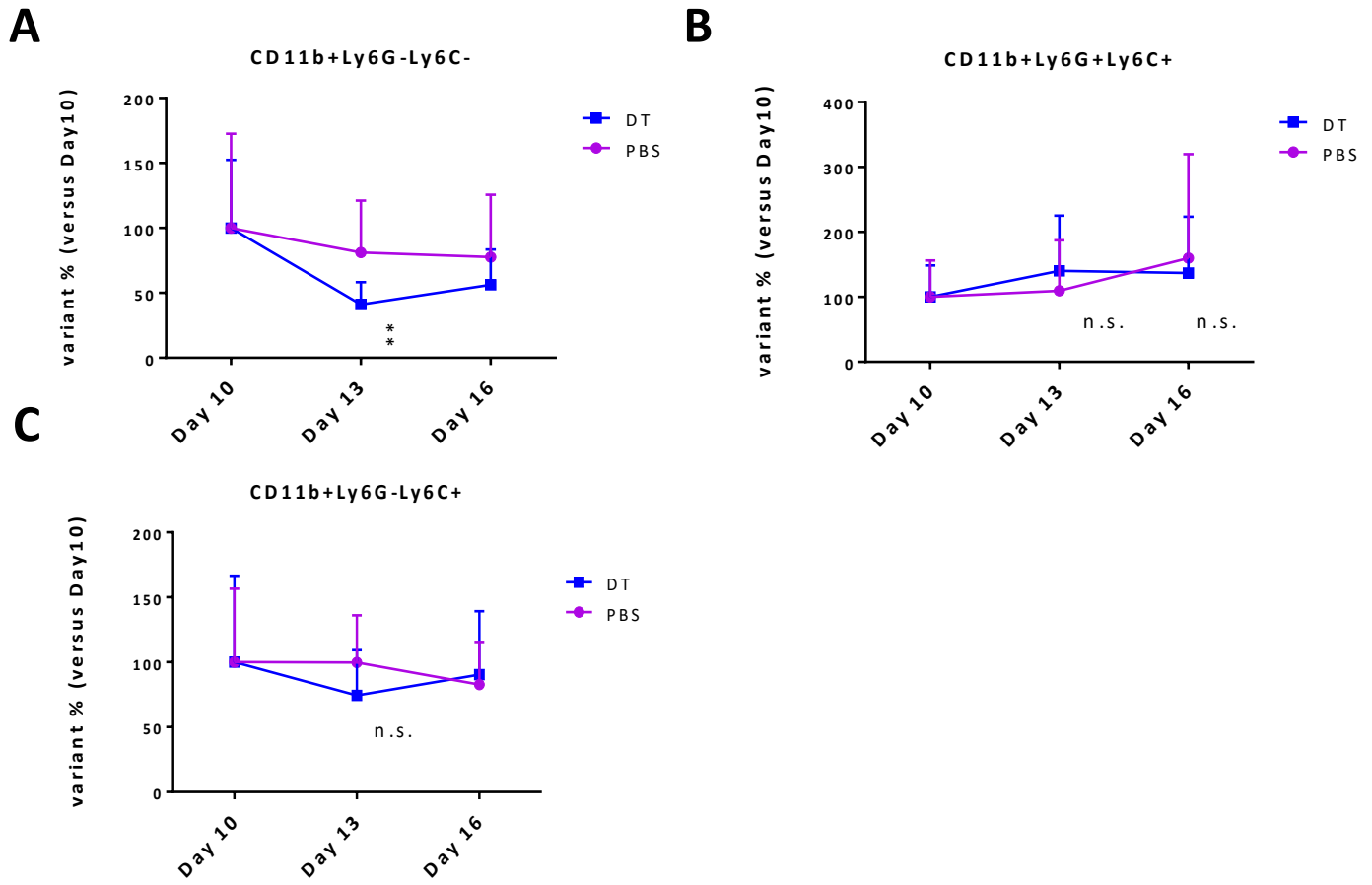
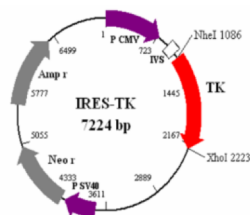


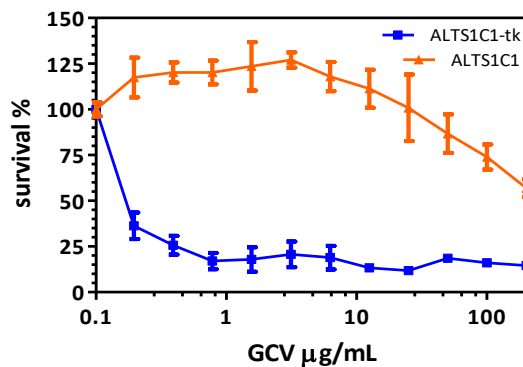
Figure S3

C

A



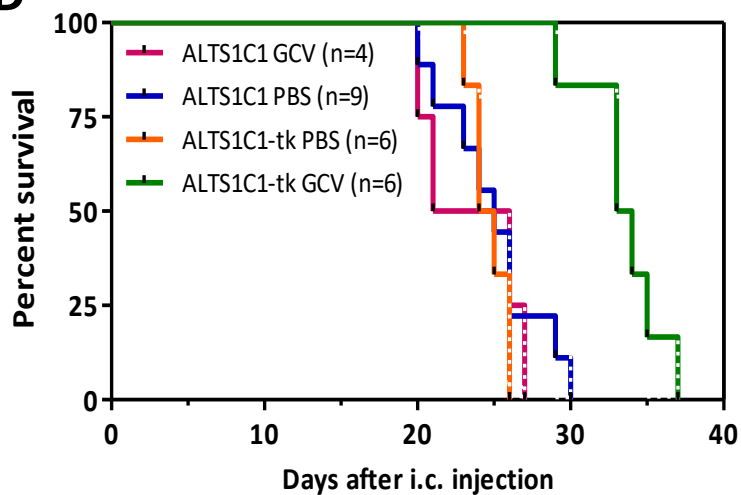
B



IC<sub>50</sub> of GCV: ALTS1C1-tk 0.44 µg/ml  
ALTS1C1 241.10 µg/ml

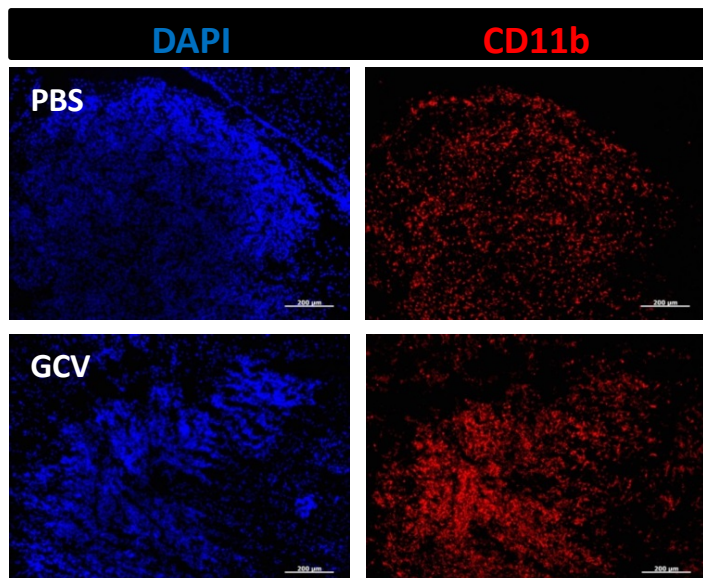
D

Mice survival curve



Group	Mean surviving day ± SD
ALTS1C1 GCV	23.5 ± 3.5
ALTS1C1 PBS	24.9 ± 3.3
ALTS1C1-tk PBS	24.7 ± 1.21
ALTS1C1-tk GCV	33.5 ± 2.67

E



CD11b<sup>+</sup> expression in tumor

