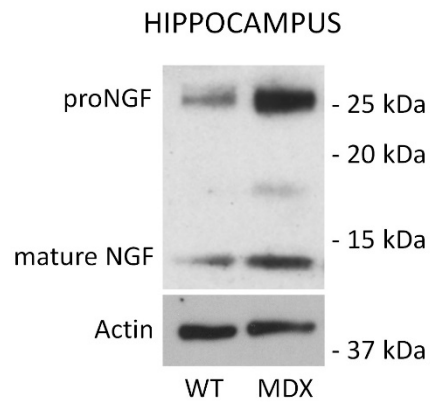


# Supplementary Materials

Supplementary Table S1

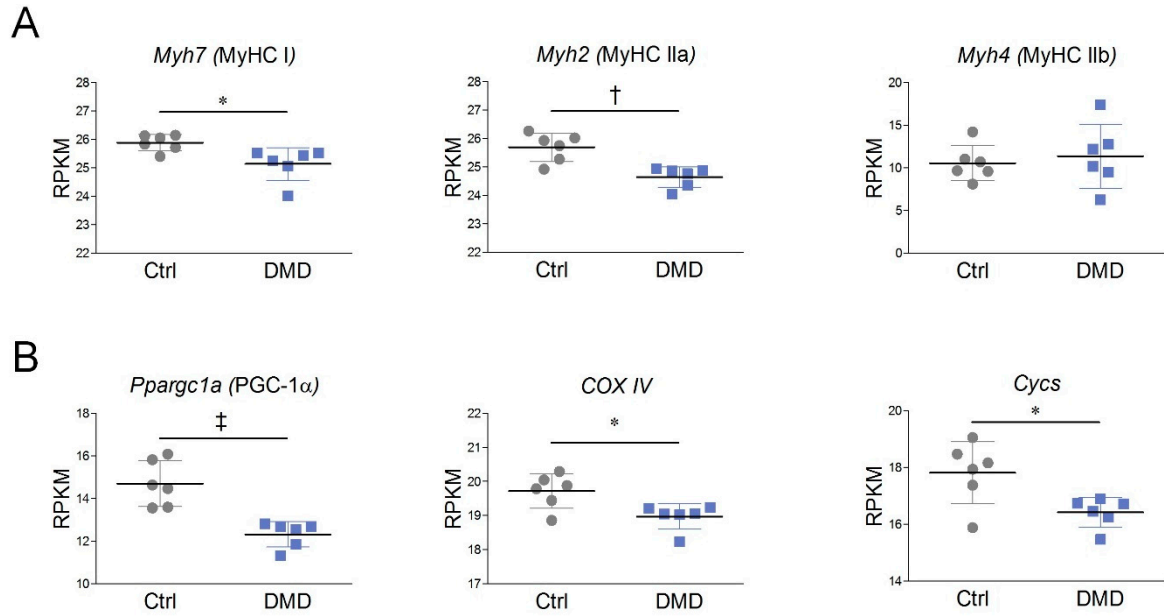
Table S1. List of primers used in quantitative RT-PCR analysis		
<i>Mouse gene</i>	<i>Forward</i>	<i>Reverse</i>
<i>Hprt</i>	5'-CCTCATGGACTGATTATGGACAG	5'-TCAGCAAAGAACTTATAGCCCC
<i>Myh7</i>	5'-GCCAACTATGCTGGAGCTGATGCC	5'-GGTGCCTGGAGCGCAAGTTTGTCATAAG
<i>Myh4</i>	5'-GAGCTACTGGATGCCAGTGAGCGC	5'-CTGGACGATGTCTTCCATCTCTCC
<i>Tnnc2</i>	5'-CCATCATCGAGGAGGTGGAC	5'-CTTCCCCTTCGCATCCTCTT
<i>Tbx15</i>	5'-TGTTTCGCACACTGACCTTTG	5'-CCAGTGCTGGAGGTGGTT
<i>MtCO1</i>	5'-TGCTAGCCGCAGGCATTAC	5'-GGGTGCCCAAAGAATCAGAAC
<i>Sdha</i>	5'-GCTGGTGTGGATGTCACTAAGG	5'-CCCACCCATGTTGTAATGCA
<i>Cycs</i>	5'-GCAAGCATAAGACTGGACCAAA	5'-TTGTTGGCATCTGTGTAAGAGAATC
<i>Tfam</i>	5'-AAGGGAATGGGAAAGGTAGA	5'-AACAGGACATGGAAAGCAGAT

## Supplementary Figure S1



**Supplementary Figure 1.** Validation of anti-NGF (E-12, sc-365944, Santa Cruz Biotechnology) in the hippocampi of wild type and mdx mice. Western blot showing a clear band at approximately 26 kDa, corresponding to proNGF, and a second band at approximately 13.5 kDa, corresponding to mature NGF. Actin was chosen as housekeeping protein. Mouse brain hippocampus was chosen as positive control for the detection of both precursor and mature form of NGF.

## Supplementary Figure S2



**Supplementary Figure 2.** (A) RPKM expression levels of *Myh7*, *Myh2*, and *Myh4* and (B) RPKM expression levels of the oxidative markers PGC-1 $\alpha$  (*Ppargc1a*), *COX IV* and cytochrome C (*Cycc*) from RNA-Seq dataset previously published by Khairallah et al. Healthy individuals (Ctrl, N=6) and DMD patients (N=6). Data are expressed as mean $\pm$ SD. Statistical analysis was performed by using Student's t test. \*P<0.05; †P<0.01; ‡P<0.001.