

SUPPLEMENTAL MATERIAL

Mitochondrial structure and function in the metabolic myopathy accompanying patients with critical limb ischemia

Thomas Groennebaek¹, Tine Borum Billeskov^{2,6}, Camilla Tvede Schytz^{1,3}, Nichlas Riise Jespersen⁴, Hans Erik Bøtker⁴, Rikke Kathrine Jentoft Olsen⁵, Nikolaj Eldrup⁶, Joachim Nielsen³, Jean Farup², Frank Vincenzo de Paoli^{2,6*}, Kristian Vissing^{1*}

¹Department of Public Health, Aarhus University, Aarhus, Denmark

²Department of Biomedicine, Aarhus University, Aarhus, Denmark

³Department of Sports Science and Clinical Biomechanics, University of Southern Denmark, Odense, Denmark

⁴Department of Cardiology, Aarhus University Hospital, Aarhus, Denmark

⁵Research Unit for Molecular Medicine, Aarhus University Hospital, Aarhus, Denmark

⁶Department of Cardiothoracic and Vascular Surgery, Aarhus University Hospital, Aarhus, Denmark

Supplemental figure

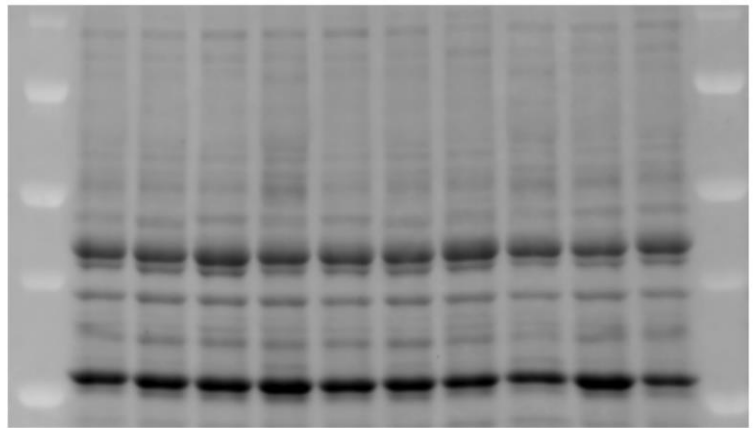
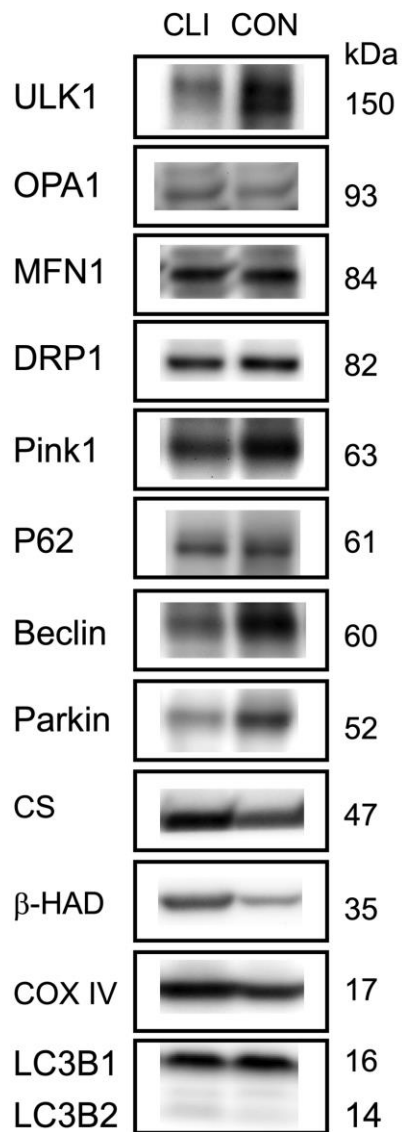


Figure S1. Representative immunoblots. Representative blots of individual proteins for one CLI patient and one CON patient(A). Representative stain free blot image of membrane used for normalization of total protein for five CLI patients and five CON patients (B).