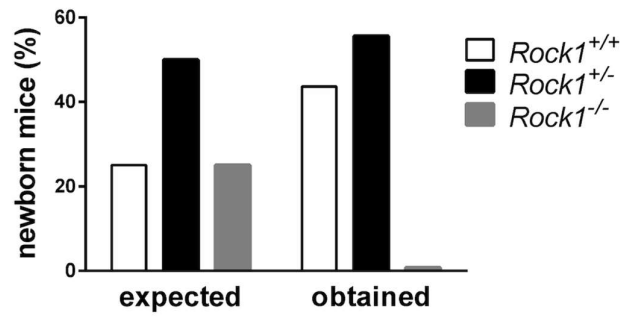


Supplementary materials

A



B

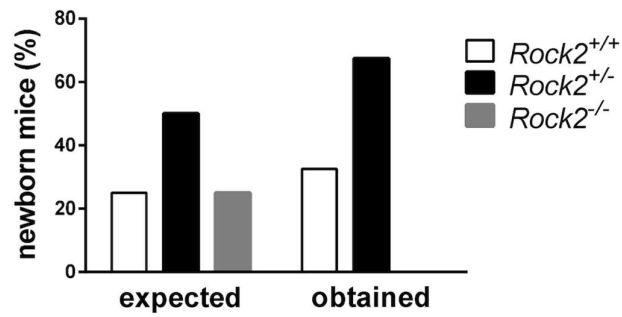


Figure 1. Genotype of *Rock1*^{-/-} and *Rock2*^{-/-} offspring. Percentages of expected (left) and actual (right) genotypes of newborn mice obtained from haploinsufficient breedings of *Rock1*^{+/+} x *Rock1*^{+/-} (n=252, A) and *Rock2*^{+/+} x *Rock2*^{+/-} (n=227, B).

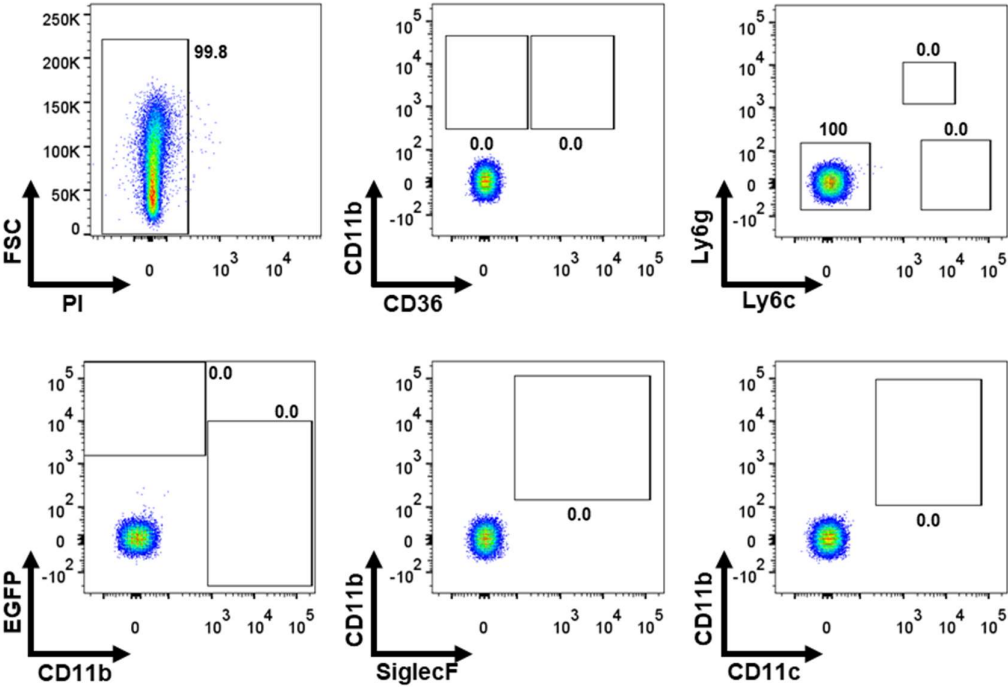


Figure 2. Flow cytometry analysis of unstained mouse heart. Gating strategy for myeloid cell subsets and cardiac fibroblasts in flow cytometry analysis of unstained samples of heart from wild-type mice.

Table 1. Oligonucleotide sequences used in quantitative RT-PCR. Forward and reverse sequences of oligonucleotides complementary to transcripts of the analyzed genes used in quantitative RT-PCR experiments.

Gene	F primer sequence	R primer sequence
<i>Acta2</i>	GCCATCTTTCATTGGGATGGAG	ACAGGACGTTGTTAGCATAGAGA
<i>Coll1a1</i>	ACCGATGGATTCCCGTTCG	CATTAGGCGCAGGAAGGTCA
<i>Fn1</i>	GAACGACACGTTCCACAAGC	CACTGGTCAATGGGGTCACA
<i>Nox4</i>	TGGCCAACGAAGGGGTAAA	ACACAATCCTAGGCCCAACA
<i>Postn</i>	AGACTGCTTCAGGGAGACAC	ACGGCCTTCTCTTGATCGTC
<i>Vim</i>	CGAGAGAAATTGCAGGAGGAGA	CGTTCAAGGTCAAGACGTGC
<i>Mmp2</i>	CCCCCATGAAGCCTTGTTTAC	TACAGCTGTTGTAGGAGGTGC
<i>Mmp9</i>	AGCGCCAGCCGACTTTT	TAGCGGTACAAGTATGCCTCTG
<i>Rock1</i>	AAGCTTGCAGGAAAGTTTACAGA	AAGTTCTGCATTTCTGCTCCA
<i>Gapdh</i>	GTCCCAGCTTAGGTTTCATCAGG	ACGGCCAAATCCGTTACAC

Table S2. Quantification of cardiac inflammatory cells in *Coll-EGFP* and *Coll-EGFP x Rock1^{+/-}* mice at d21 of EAM. Table presents percentages and absolute numbers (mean value \pm SEM) of analyzed cells populations in *Coll-EGFP* and *Coll-EGFP x Rock1^{+/-}* mice hearts at day 21 of EAM. EGFP⁺ cardiac fibroblasts and inflammatory CD11b⁺ myeloid cells were analyzed on total single cells (total EGFP⁺ and total CD11b⁺) and on myeloid cell subsets gated on inflammatory CD11b⁺ myeloid cells as presented in the Figure 2.

	Coll-EGFP		Coll-EGFP x ROCK1 ^{+/-}	
	Percentage	Absolute number	Percentage	Absolute number
Total EGFP⁺	16.75 (\pm 1.90)	160227 (\pm 31014)	14.58 (\pm 1.55)	113528 (\pm 17536)
Total CD11b⁺	8.74 (\pm 1.48)	102551 (\pm 30873)	7.90 (\pm 1.05)	67604 (\pm 12209)
CD11b⁺-gated cells				
CD11b⁺ CD36⁺	34.81 (\pm 6.30)	288789 (\pm 6146)	35.53 (\pm 5.68)	21948 (\pm 3553)
CD11b⁺ CD36⁺ Ly6g⁺ Ly6c⁺	21.28 (\pm 2.49)	25045 (\pm 9719)	20.21 (\pm 1.24)	14148 (\pm 2910)
CD11b⁺ CD36⁻ Ly6g⁻ Ly6c⁻	22.81 (\pm 3.20)	20630 (\pm 50870)	26.21 (\pm 4.01)	15936 (\pm 2146)
CD11b⁺ CD36⁻ Ly6g⁺ Ly6c⁺	15.07 (\pm 2.23)	17216 (\pm 6399)	14.97 (\pm 1.60)	10528 (\pm 2457)
CD11b⁺ SiglecF⁺	6.68 (\pm 1.16)	5970 (\pm 2110)	7.18 (\pm 1.16)	4190 (\pm 632)
CD11b⁺ CD11c⁺	9.84 (\pm 1.26)	10671 (\pm 4775)	9.57 (\pm 1.67)	5361 (\pm 1645)