

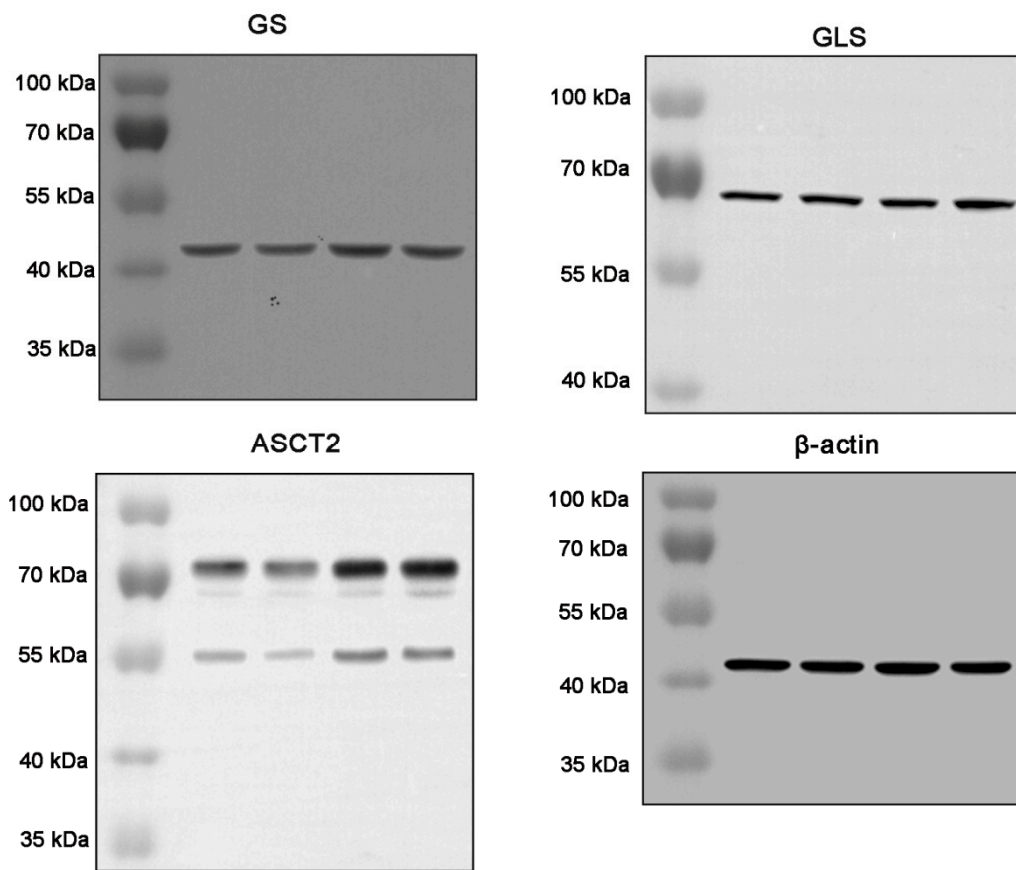
## Supplementary Information

# Deletion of P2X7 Receptor Decreases Basal Glutathione Level by Changing Glutamate-Glutamine Cycle and Neutral Amino Acid Transporters

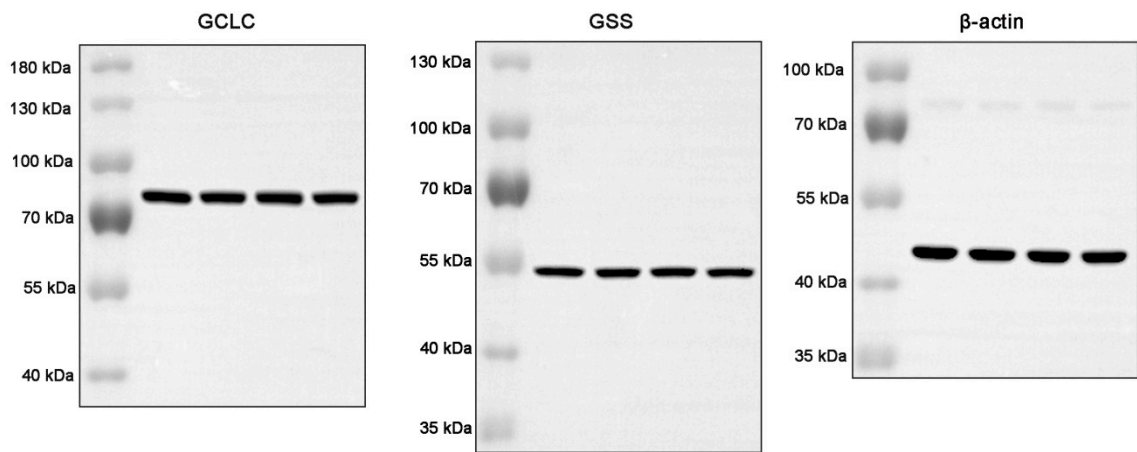
Hana Park and Ji-Eun Kim \*

Department of Anatomy and Neurobiology, Institute of Epilepsy Research, College of Medicine, Hallym University, Chuncheon 200-702, Korea; [M19050@hallym.ac.kr](mailto:M19050@hallym.ac.kr)

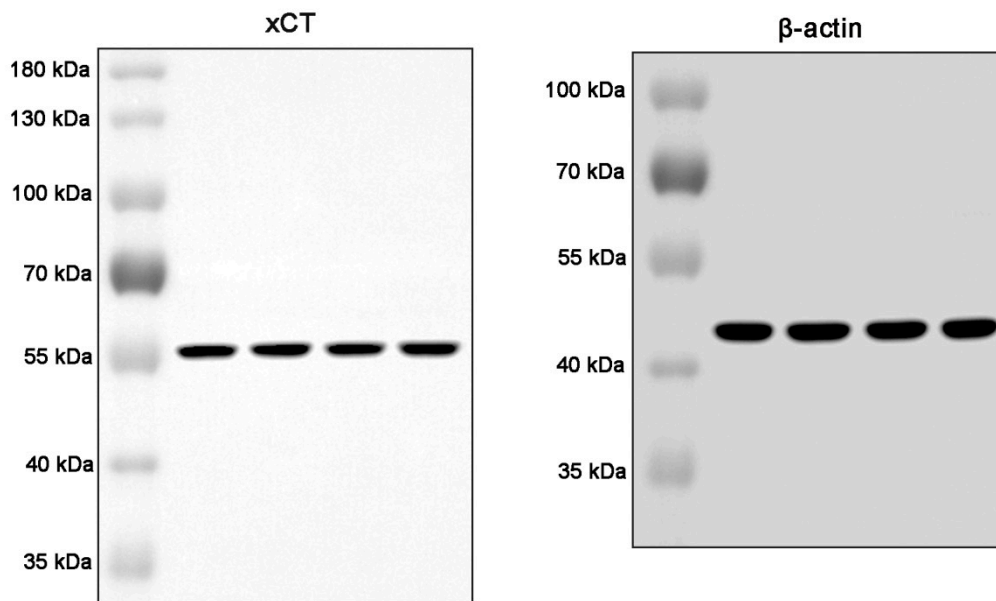
\* Correspondence: [jieunkim@hallym.ac.kr](mailto:jieunkim@hallym.ac.kr); Tel.: +82-33-248-2522; Fax: +82-33-248-2525



Supplementary Figure S1. Full-length gel images of Western blot data in Figure 1A.



**Supplementary Figure S2.** Full-length gel images of Western blot data in Figure 3A.



Supplementary Figure S3. Full-length gel images of Western blot data in Figure 4A.