

Article

Bivalent Inhibitor with Selectivity for Trimeric MMP-9 Amplifies Neutrophil Chemotaxis and Enables Functional Studies on MMP-9 Proteoforms.

Elisa Nuti ¹, Armando Rossello ¹, Doretta Cuffaro ¹, Caterina Camodeca ¹, Jens Van Bael ², Dries van der Maat ², Erik Martens ², Pierre Fiten ², Rafaela Vaz Sousa Pereira ², Estefania Ugarte-Berzal ², Mieke Gouwy ³, Ghislain Opdenakker ², Jennifer Vandooren ^{2,*}

¹ Department of Pharmacy, University of Pisa, Via Bonanno 6, 56126 Pisa, Italy; elisa.nuti@farm.unipi.it (E.N.); armando.rossello@farm.unipi.it (A.R.); doretta.cuffaro@farm.unipi.it (D.C.); caterina.camodeca@unipi.it (C.C.)

² Laboratory of Immunobiology, Department of Microbiology, Immunology and Transplantation, Rega Institute for Medical Research, University of Leuven, KU Leuven, Herestraat 49 - bus 1044, B-3000 Leuven, Belgium; jens.vanbael@kuleuven.be (J.V.B.); driesvandermaat@hotmail.com (D.v.d.M.); erik.martens@kuleuven.be (E.M.); pierre.fiten@kuleuven.be (P.F.); rafaela.pereira@kuleuven.be (R.V.S.P.); estefania.ugarteberzal@kuleuven.be (E.U.-B.); ghislain.opdenakker@kuleuven.be (G.O.)

³ Laboratory of Molecular Immunology, Department of Microbiology, Immunology and Transplantation, Rega Institute for Medical Research, University of Leuven, KU Leuven, Herestraat 49 - bus 1044, B-3000 Leuven, Belgium. mieke.gouwy@kuleuven.be (M.G.)

* Correspondence: jennifer.vandooren@kuleuven.be; Tel.: +32-16-32-22-95

Received: 9 June 2020; Accepted: 2 July 2020; Published: xx

Supplementary material

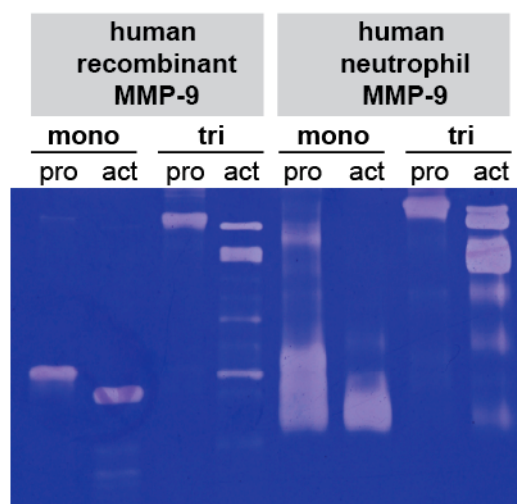


Figure 1. gelatin zymography analysis of human recombinant and human neutrophil-derived MMP-9 monomers and trimers. A shift in molecular weight is observed after activation with the catalytic domain of MMP-3.

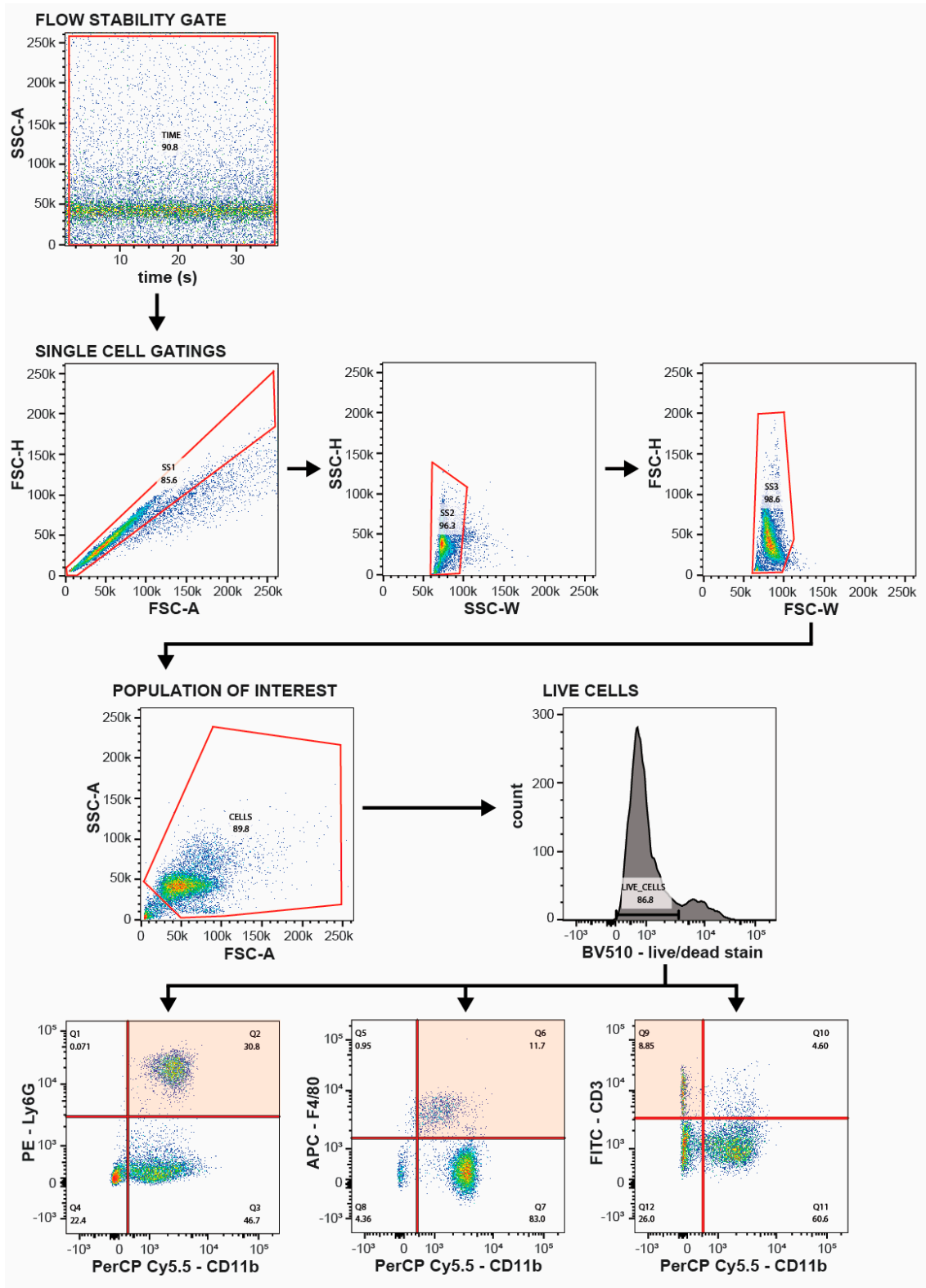


Figure 2. Flow cytometry gating strategy for cellular identification. Representative flow cytometry dot plots for analysis of CD11b⁺Ly6G⁺ neutrophils, CD11b⁺F4/80⁺ monocytes and CD11b-CD3⁺ T lymphocytes from mouse air pouches.

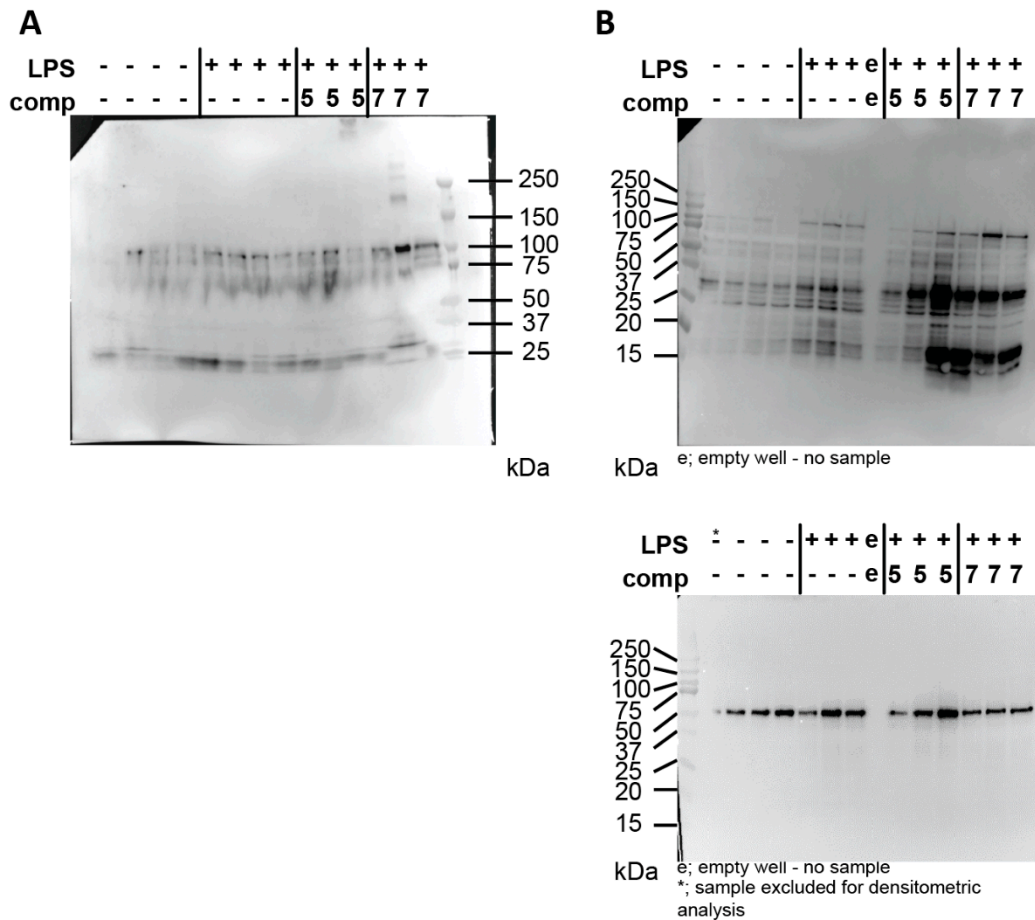


Figure 3. Full images of Western-blot analysis. **(A)** Western-blot analysis of mouse plasma 5 hours after LPS/compound administration. Signal detected with anti-MMP-9 antibody. Full image of Western-blot analysis shown in Figure 6E. **(B)** Western-blot analysis of mouse lung extract, 5 hours after LPS/compound administration. Top panel; signal detected with anti-MMP-9 antibody. Bottom panel; signal detected with anti-tubulin antibody. Full images of Western-blot analyses shown in Figure 6F. +/- signs indicate, respectively, the presence or absence of LPS (2 µg).