

Supplementary Figures

Targeted Sequencing of Pancreatic Adenocarcinomas from Patients with Metachronous Pulmonary Metastases

Viktor Hlavac^{1,2}, Beatrice Mohelnikova-Duchonova³, Martin Lovecek⁴, Jiri Ehrmann⁵, Veronika Brynychova^{1,2}, Katerina Kolarova³ and Pavel Soucek^{1,2}

¹*Biomedical Center, Faculty of Medicine in Pilsen, Charles University, Pilsen, Czech Republic;*

²*Toxicogenomics Unit, National Institute of Public Health, Prague, Czech Republic;*

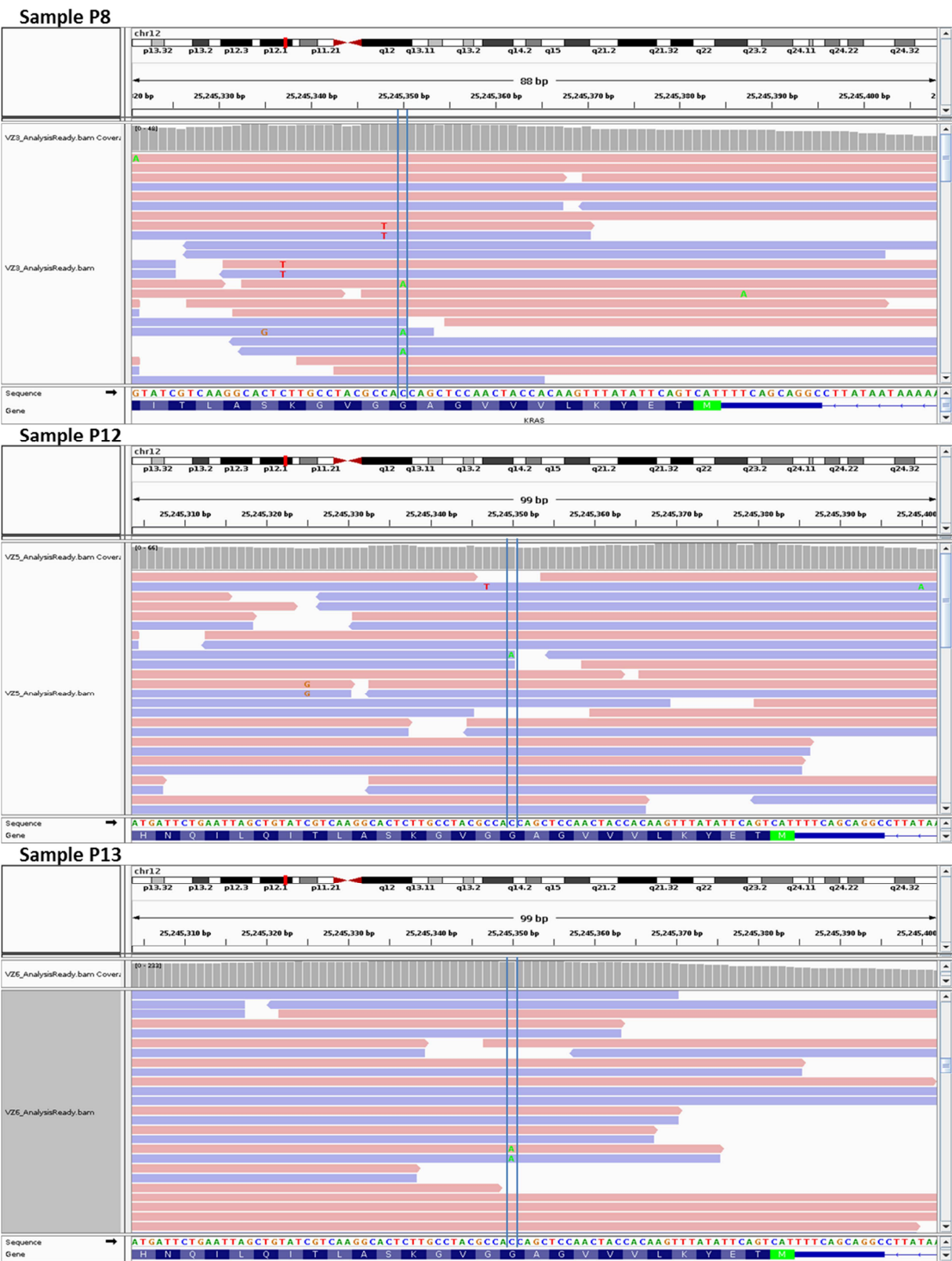
³*Department of Oncology, Institute of Molecular and Translational Medicine, Faculty of Medicine and Dentistry, Palacky University, Olomouc, Czech Republic;*

⁴*Department of Surgery I, University Hospital Olomouc and Faculty of Medicine and Dentistry, Palacky University, Olomouc, Czech Republic;*

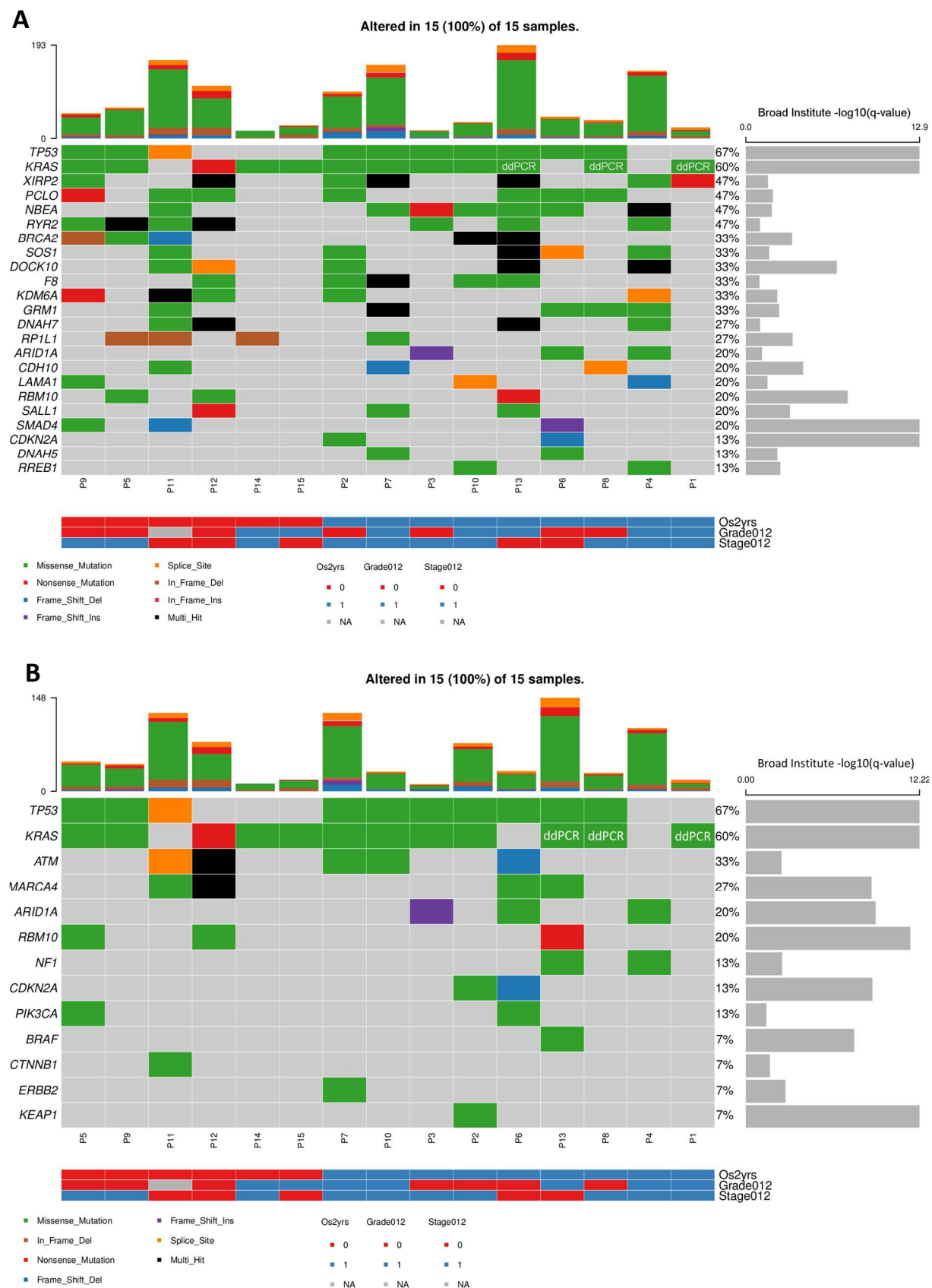
⁵*Department of Clinical and Molecular Pathology, University Hospital Olomouc and Faculty of Medicine and Dentistry, Palacky University, Olomouc, Czech Republic.*

Address for correspondence: Viktor Hlavac, PhD, Laboratory of Pharmacogenomics, Biomedical Center, Faculty of Medicine in Pilsen, Charles University, alej Svobody 76, 323 00 Pilsen, Czech Republic, phone/fax+420-377-593-840; e-mail: viktor.hlavac@lfp.cuni.cz; <http://www.biomedic-plzen.cz/en>

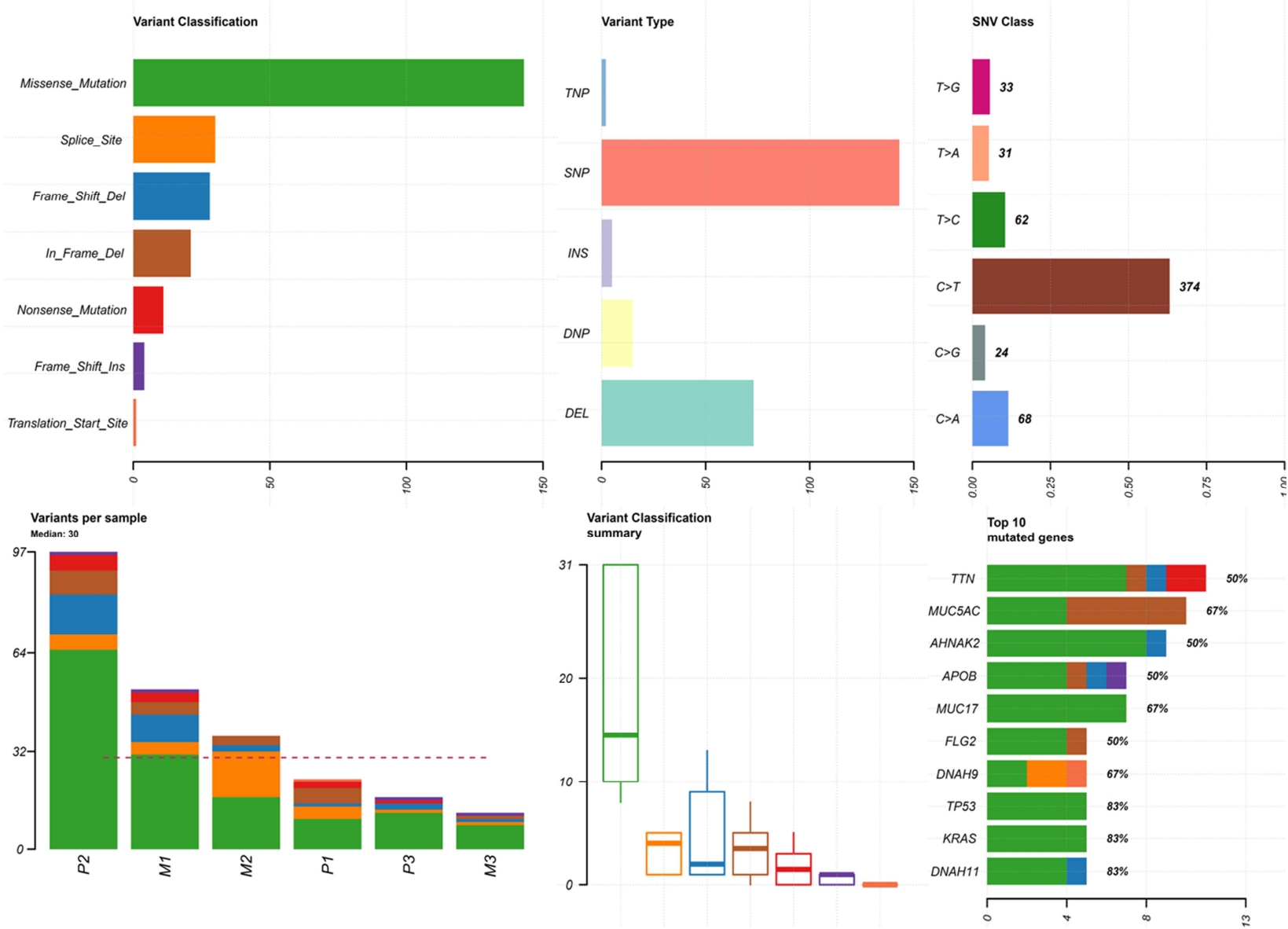
Supplementary Figure S1: IGV comparison of sequencing and ddPCR results showing reads with uncalled alternative bases



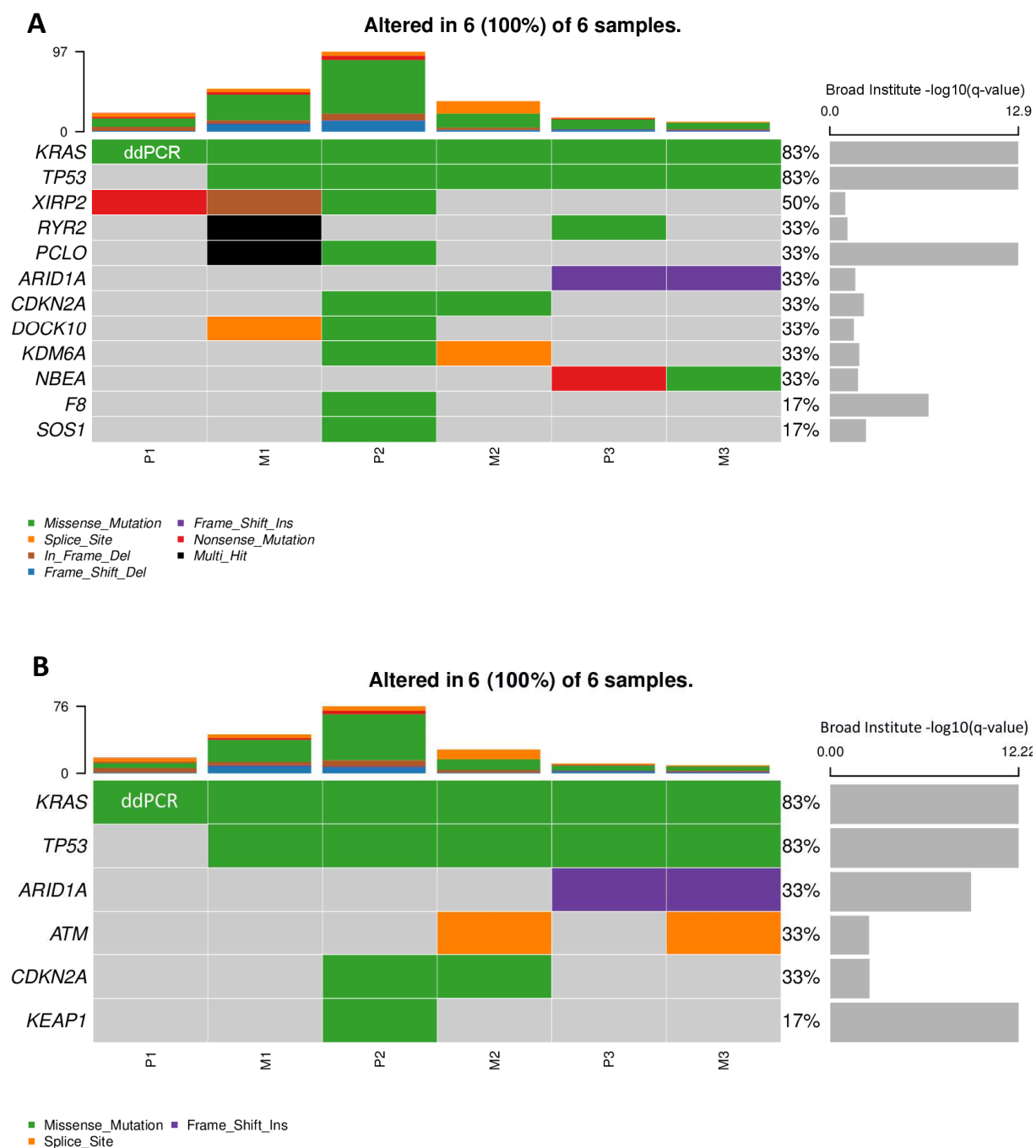
Supplementary Figure S2: Oncoplot of primary tumors depicting genes significantly mutated in Broad Institute PDAC (A) and LUAD (B) cohorts



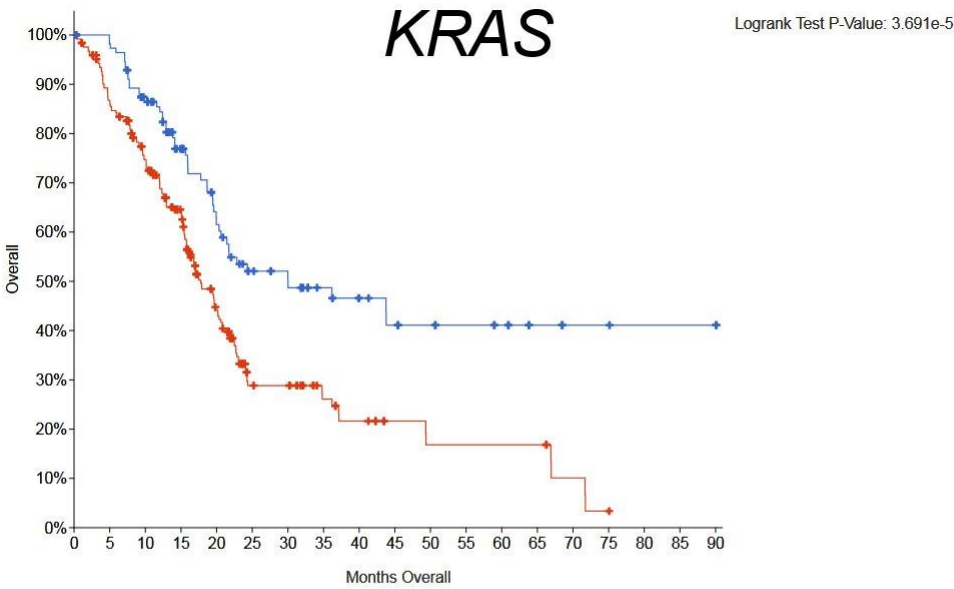
Supplementary Figure S3: The summary of the distribution of variants in three sample pairs of primary tumors and matched pulmonary metastases



Supplementary Figure S4: Oncoplot of comparison between primary tumors and matched pulmonary metastases depicting genes significantly mutated in Broad Institute PDAC (A) and LUAD (B) cohorts



Supplementary Figure S5: Overall survival plot of available TCGA datasets stratified by KRAS and TP53 mutation status (cBioPortal, refs. [40,41])

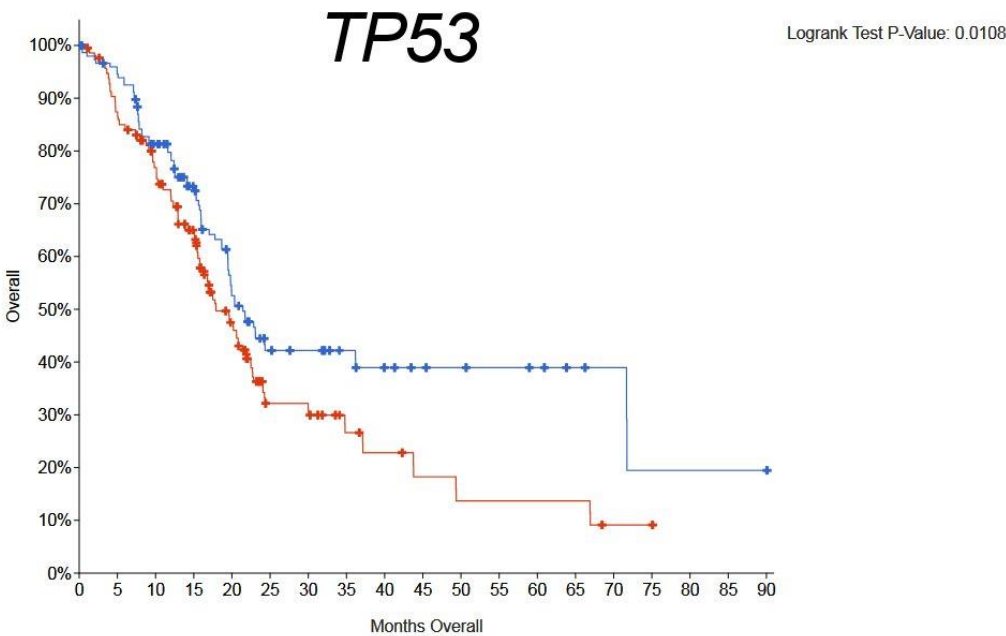


Overall

■ Altered group

■ Unaltered group

	Number of Cases, Total	Number of Cases, Deceased	Median Months Overall
Altered group	254	151	17.79
Unaltered group	114	48	30.02



Overall

■ Altered group

■ Unaltered group

	Number of Cases, Total	Number of Cases, Deceased	Median Months Overall
Altered group	212	126	17.92
Unaltered group	156	73	21.44