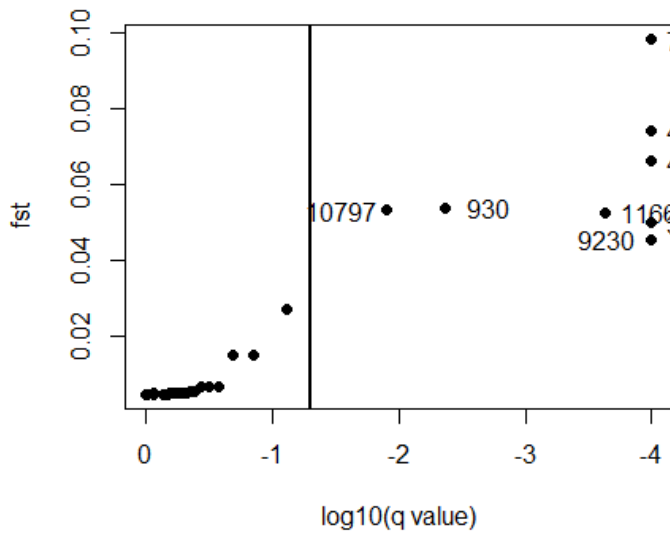
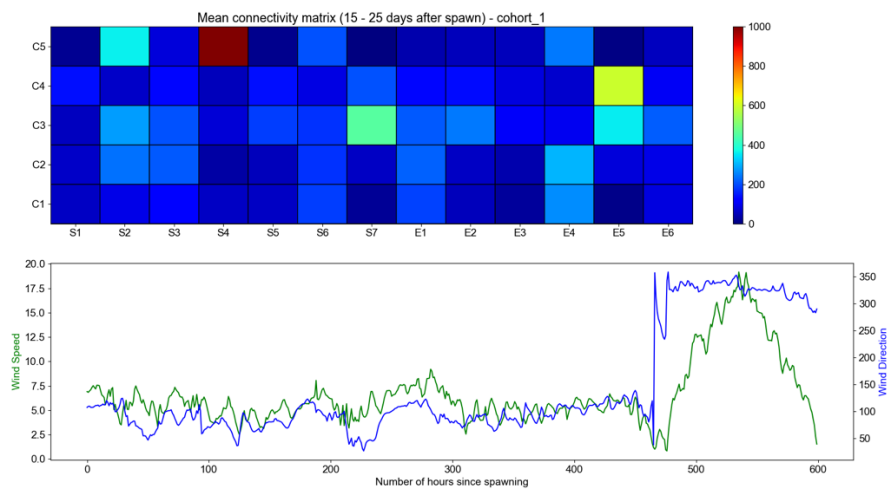


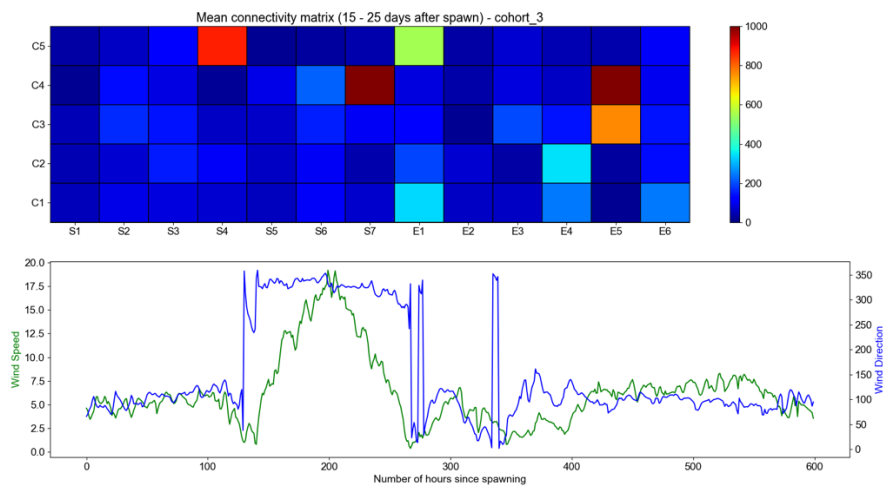
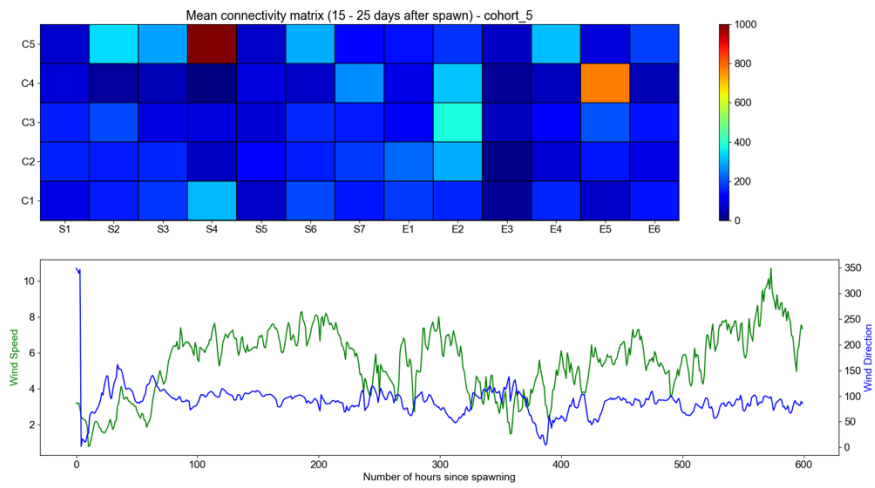
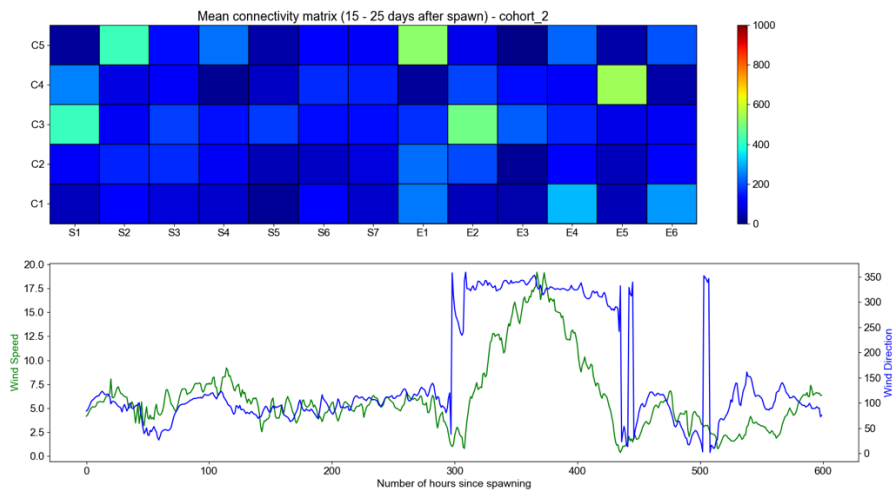
Supplementary material

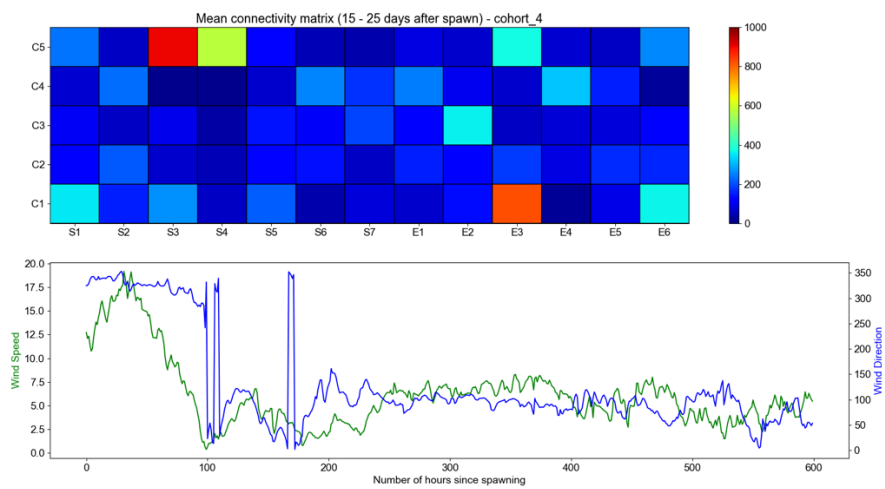
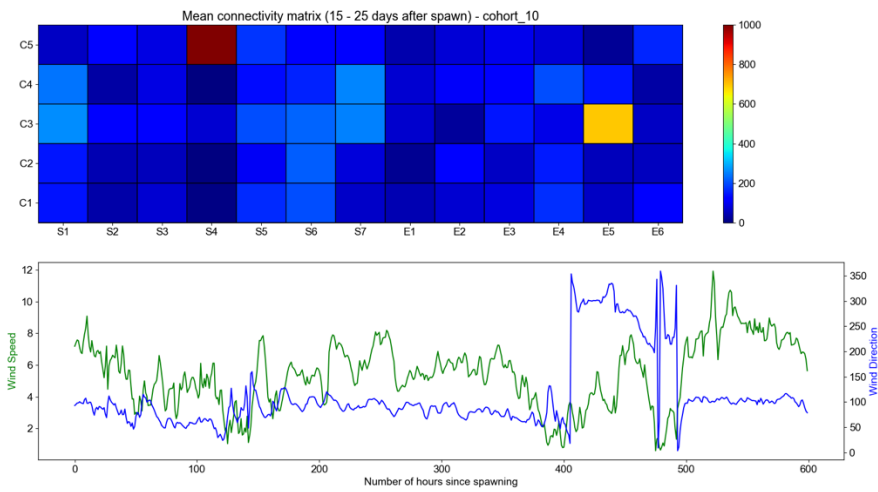
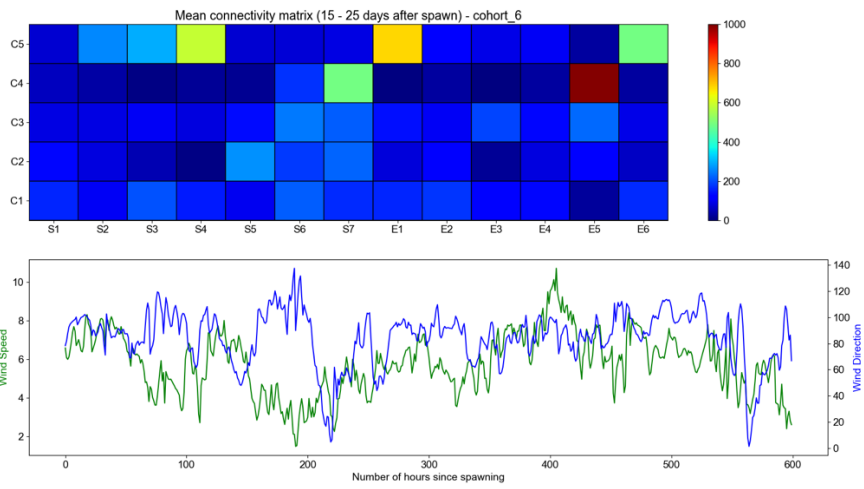
Supplementary Figure S1: Bayescan selection results

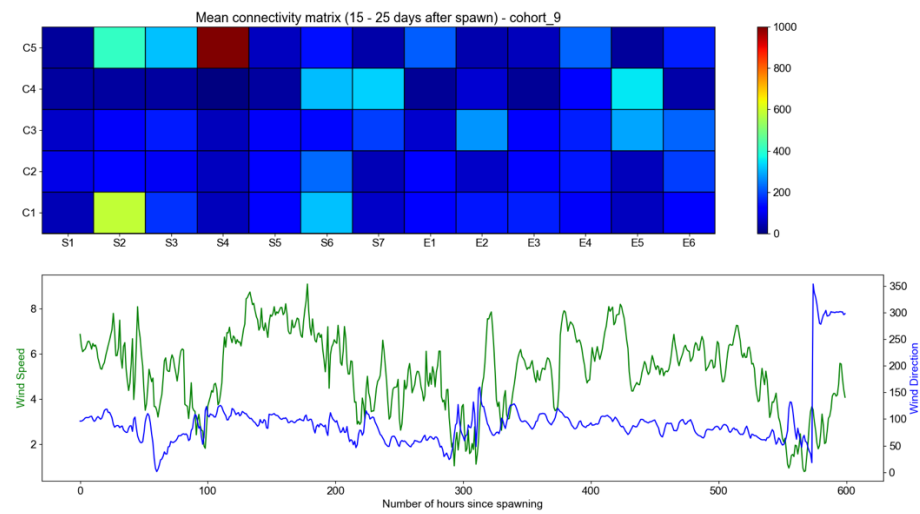
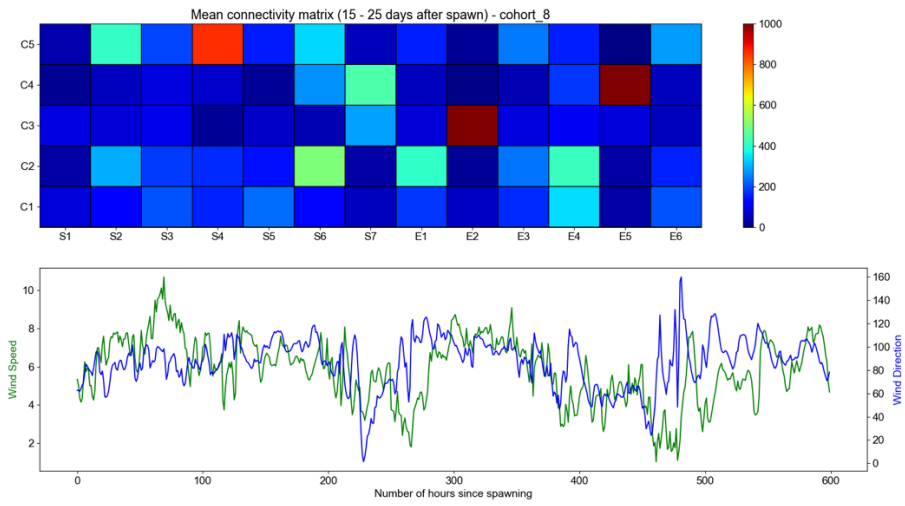
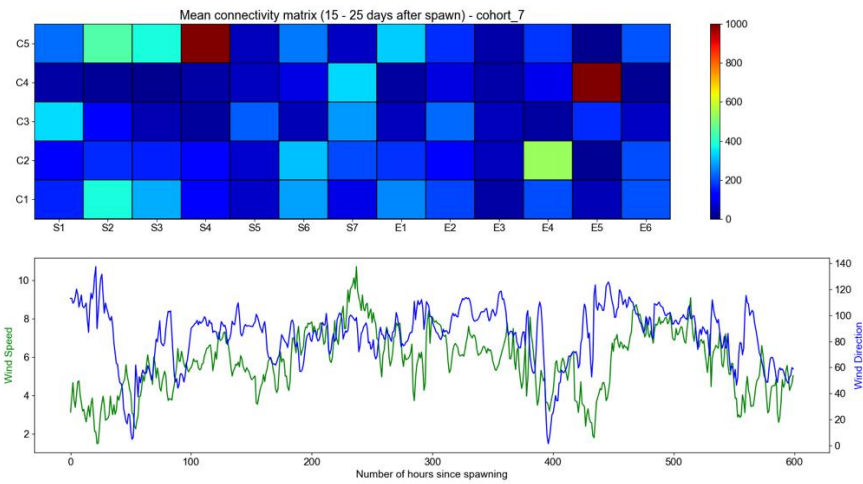


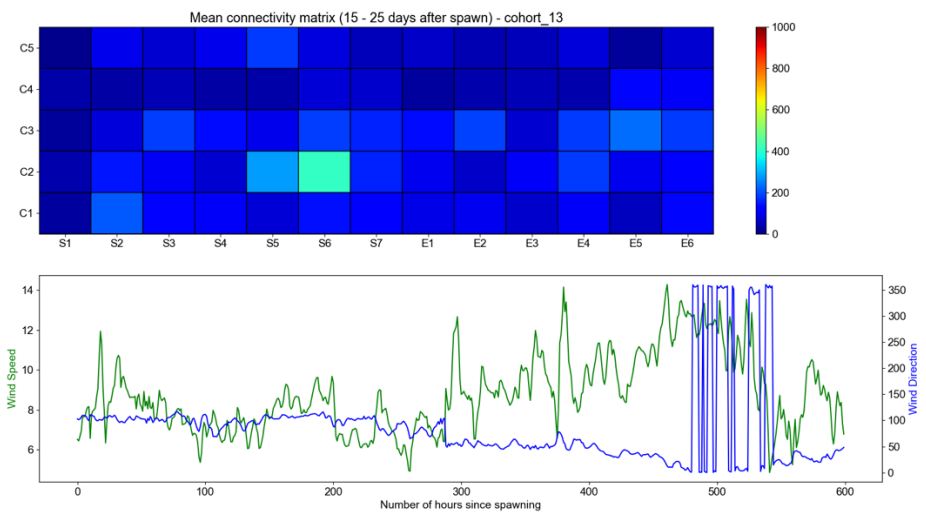
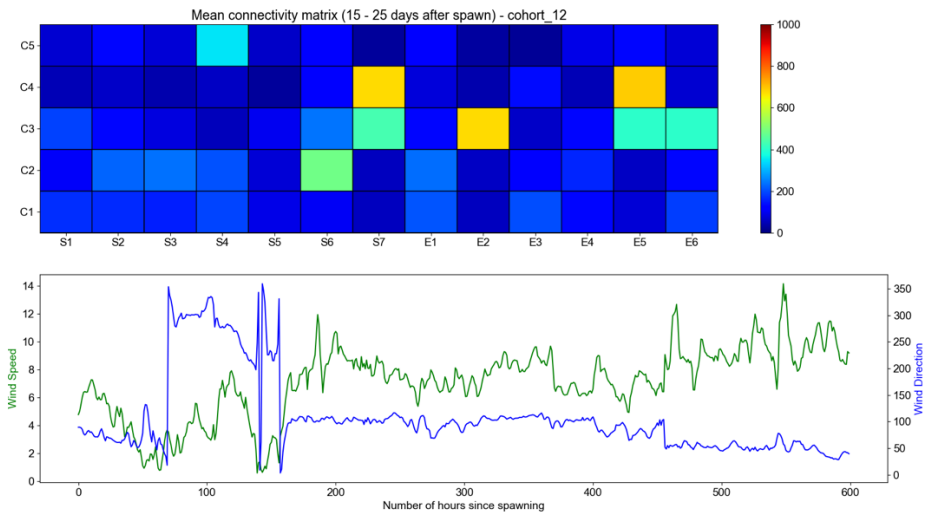
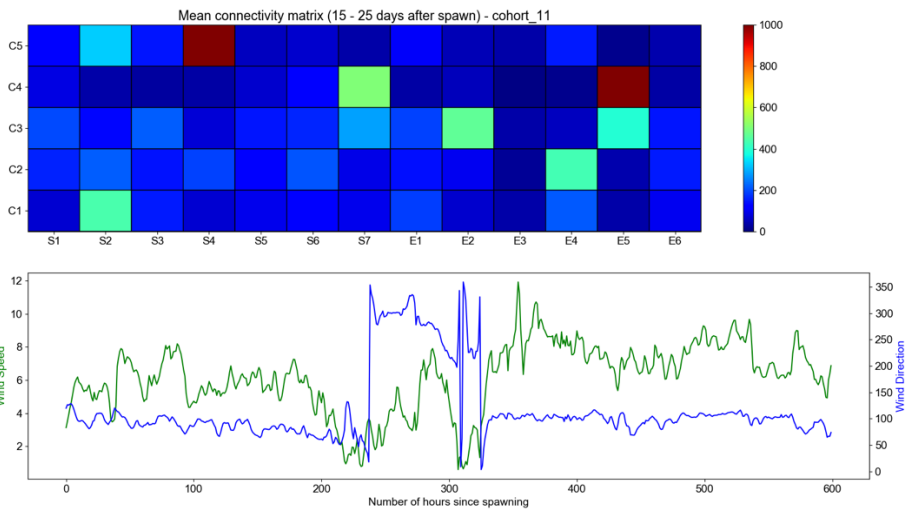
Supplementary Figure S2: heatmaps of the connectivity matrices obtained for each of the 15 cohorts modelled

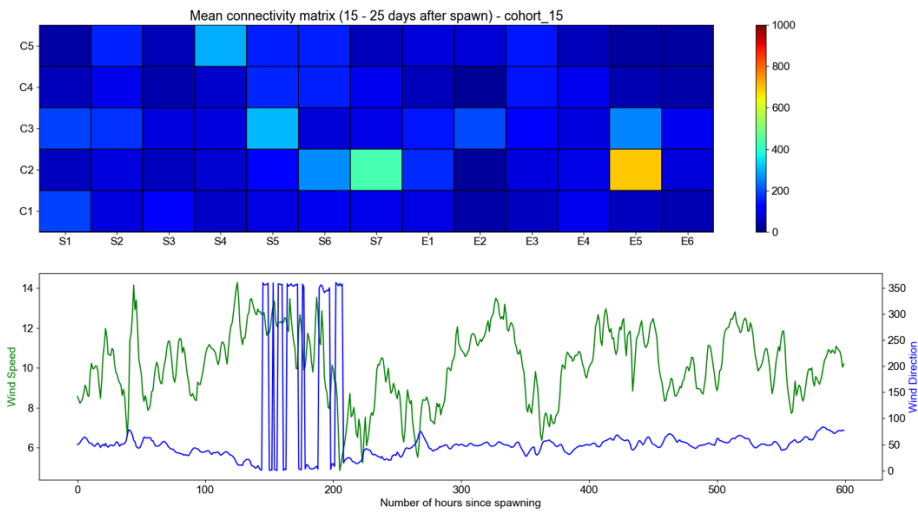
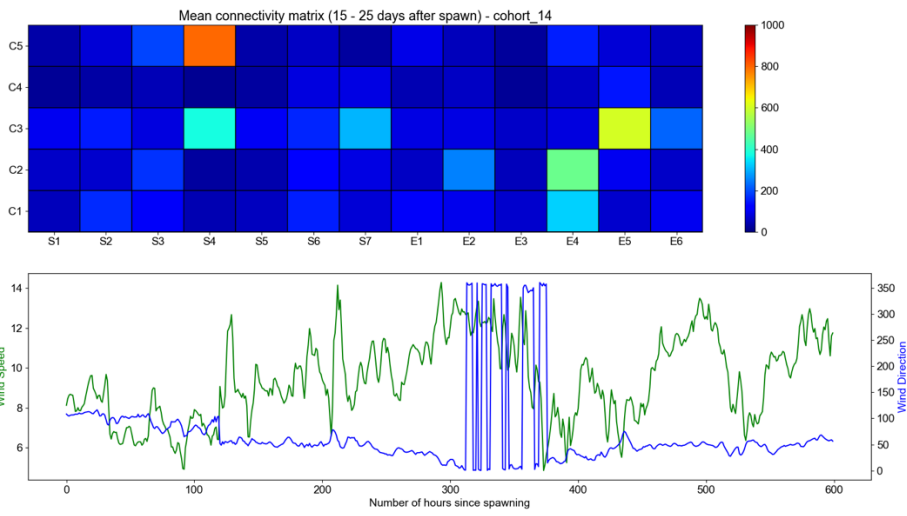












Supplementary table S1: Annotation of the eight SNPs putatively selected.

Scaffold	position	prob	qval	alpha	fst	index	SNPeff	Transcripts impacted	Annotation	GO
scaffold1138 size309401	130750	0.97099	0.0043	2.4086	0.054	930	missense_variant; upstream_gene_variant	TRINITY_DN86686_c1_g1_i2; TRINITY_DN34861_c0_g2_i1	solute carrier organic anion transporter family member 4A1	GO:0005887; GO:0015347; GO:0015349; GO:0043252; GO:0042403
scaffold1188 size238585	30706	0.9986	0.0002	2.4297	0.052	1166	intergenic_region			
scaffold1960 size257008	111339	1	0	2.3826	0.049	3816	missense_variant	TRINITY_DN81573_c0_g1_i2	sushi domain-containing protein 2 isoform X1	GO:0070062; GO:0016021; GO:0005886; GO:0030247; GO:0005044; GO:0006955; GO:1902807; GO:0051782
scaffold2247 size147876	82155	1	0	2.869	0.074	4379	intergenic_region			
scaffold2247 size147876	82182	1	0	2.7206	0.066	4380	intergenic_region			
scaffold3865 size74240	21548	1	0	3.2283	0.098	7244	5_prime_UTR_variant	TRINITY_DN76995_c0_g1_i6	uncharacterized protein LOC105318238; contains a Caspase activation and recruitment domain: a protein-protein interaction domain	
scaffold5372 size124137	33585	1	0	2.2809	0.045	9230	downstream_gene_variant	TRINITY_DN26546_c0_g1_i1	pfu_aug1.0_172490.1_7197 6.t1 uncharacterized protein	
scaffold6833 size89161	37067	0.93019	0.0125	2.3482	0.053	10797	intergenic_region			

Supplementary Table S2 : Dun's Post Hoc results

Comparison	Z	P.unadj	P.adj
Spats-Exploited	-9.269	1.88E-20	5.63E-20
Spats -Natural	-6.171	6.81E-10	2.04E-09
Exploited-Natural	3.563	3.67E-04	1.10E-03
Spats -Exploited	-9.269	1.88E-20	1.13E-19
Spats -Natural_NE	-1.088	2.77E-01	1.00E+00
Exploited-Natural_NE	7.724	1.12E-14	6.74E-14
Spats -Natural_SW	-8.849	8.86E-19	5.32E-18
Exploited-Natural_SW	-1.314	1.89E-01	1.00E+00
Natural_NE-Natural_SW	-7.567	3.81E-14	2.29E-13