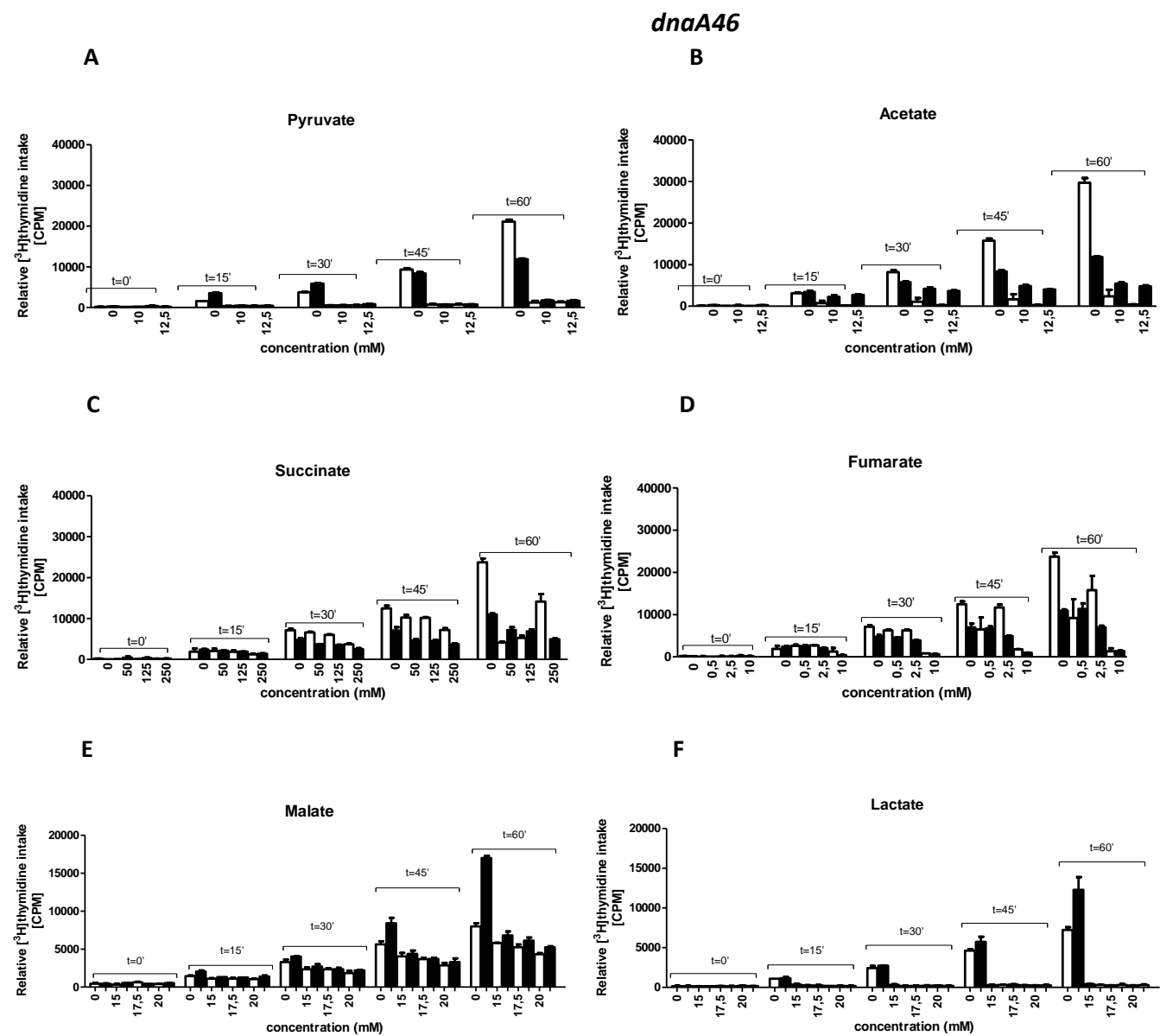
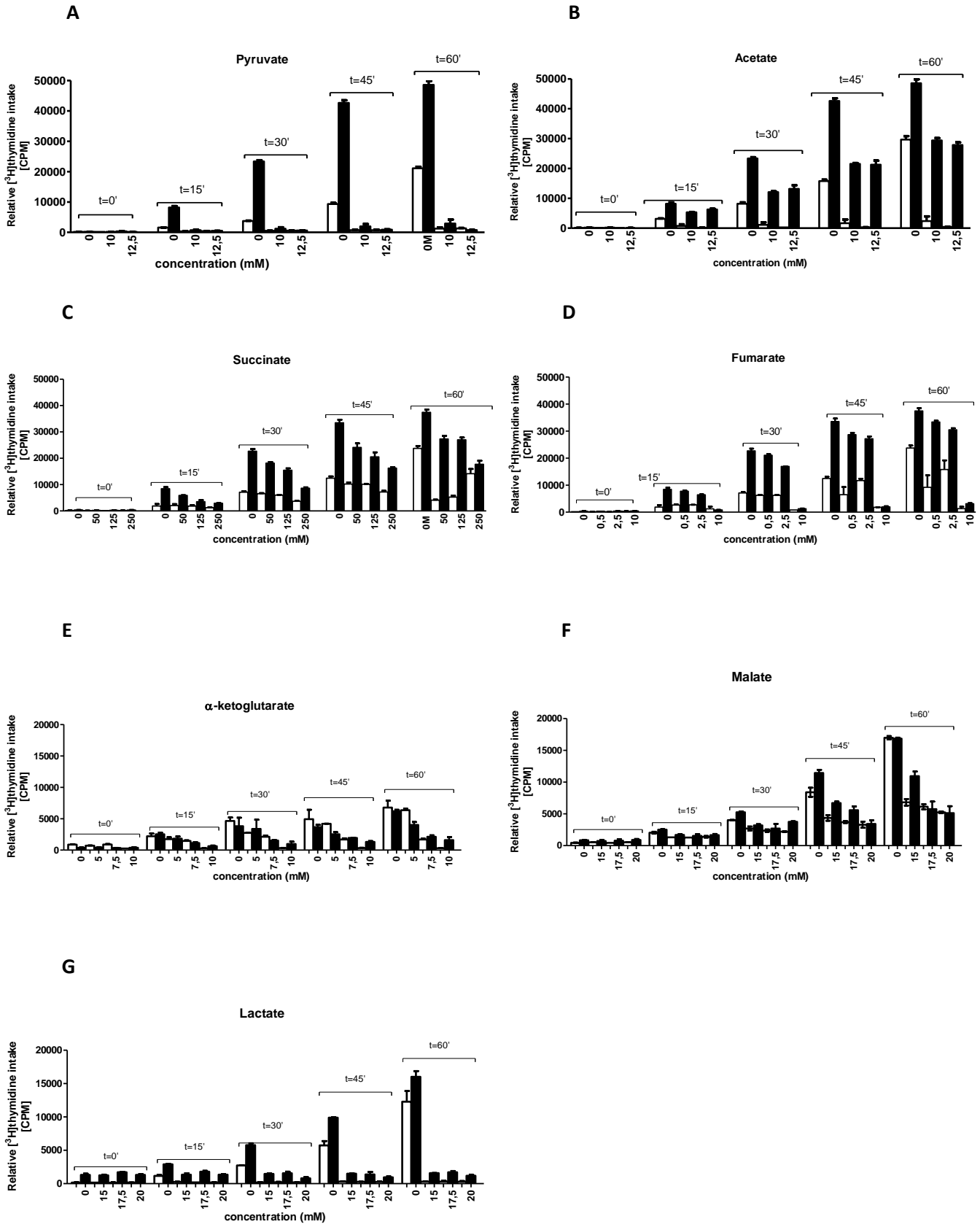


Figure S1

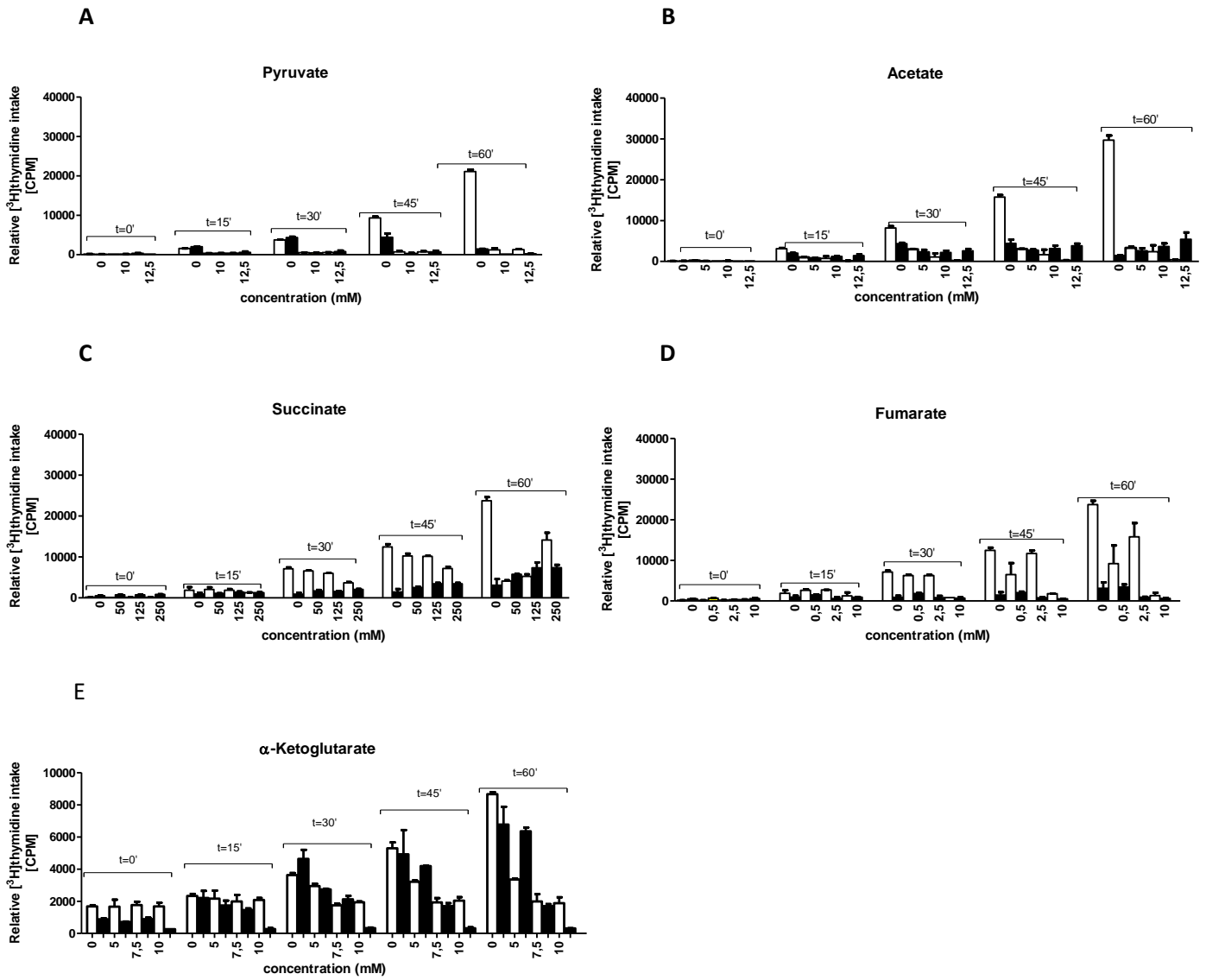
The kinetics of DNA replication in vivo in the presence of CCM metabolites. The wild type (empty columns) and *dna(ts)* (as indicated, filled columns) bacteria were cultured at the semi-restrictive temperatures in the presence of indicated metabolites at various concentrations. DNA synthesis was assessed by measurement of [<sup>3</sup>H]thymidine incorporation at time-points as indicated. The results are from at least three repetitions of experiments with SD indicated.



*dnaC(ts)*

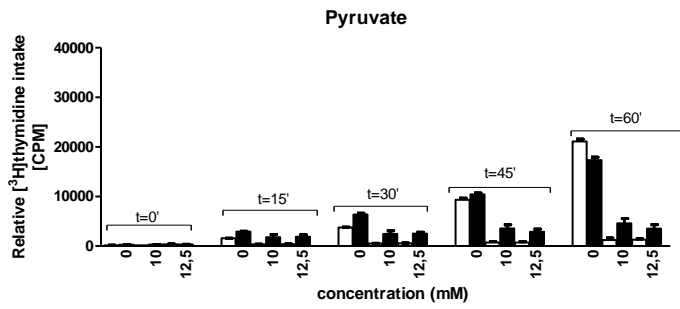


*dnaE486*

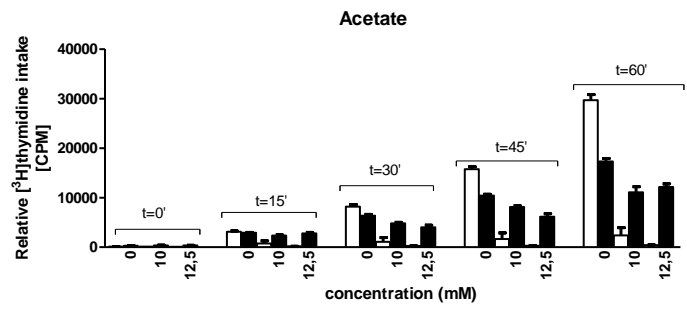


*dnaG(ts)*

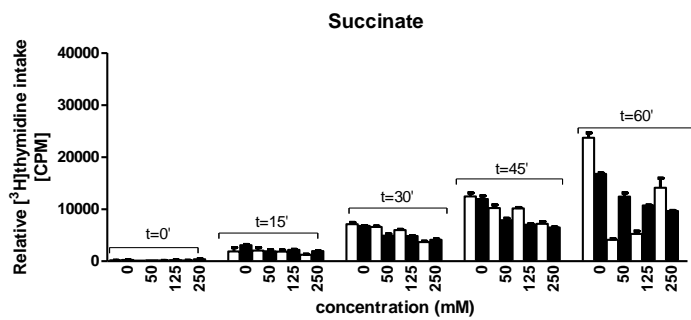
A



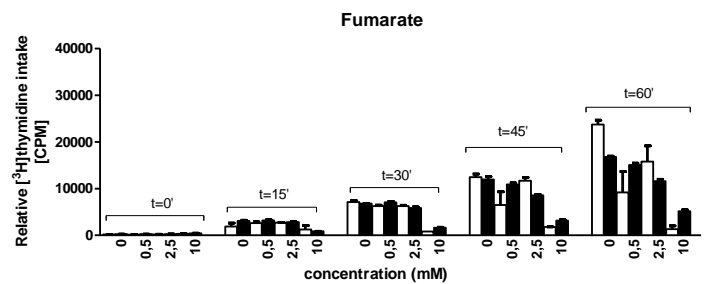
B



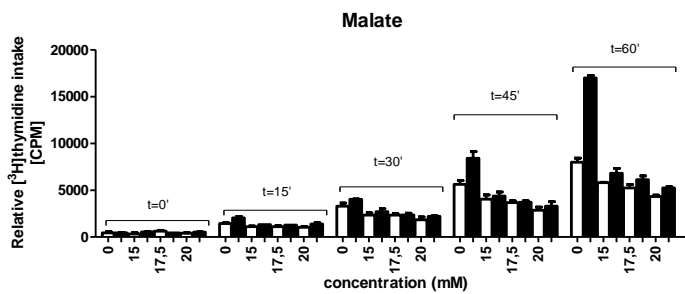
C



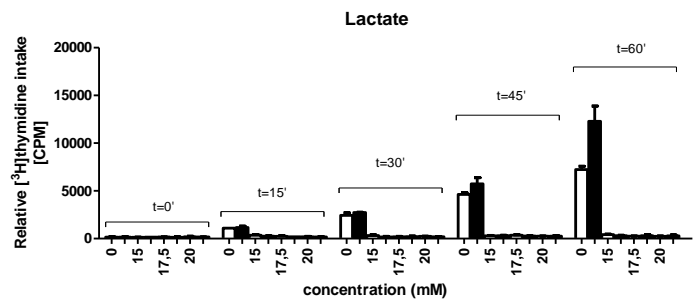
D



E

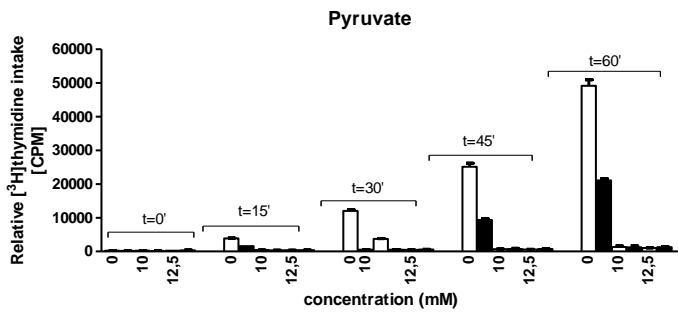


F

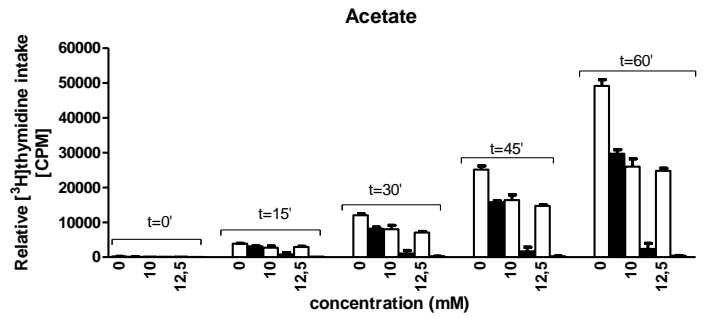


*dnaN159*

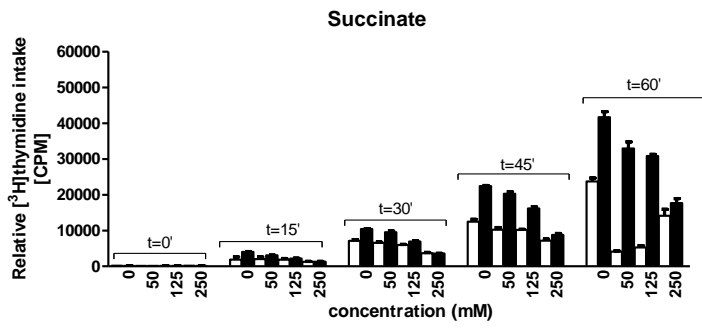
**A**



**B**



**C**



**D**

