

Supplementary Materials.

Table S1. List of individuals per species and sex analyzed in this study.

| Species | No of specimens | |
|-----------------------------------|-----------------|---|
| | ♂ | ♀ |
| <i>Acanthodactylus schreiberi</i> | - | 1 |
| <i>Eremias arguta</i> | - | 1 |
| <i>Gallotia galloti</i> | 1 | 2 |
| <i>Gastropholis prasina</i> | 2 | 3 |
| <i>Lacerta bilineata</i> | - | 1 |
| <i>Lacerta media</i> | - | 1 |
| <i>Lacerta strigata</i> | - | 1 |
| <i>Lacerta trilineata</i> | 2 | 1 |
| <i>Latastia longicaudata</i> | - | 1 |
| <i>Phoenicolacerta troodica</i> | - | 1 |
| <i>Podarcis siculus</i> | - | 1 |
| <i>Takydromus dorsalis</i> | 1 | 1 |
| <i>Takydromus sexlineatus</i> | 1 | 1 |
| <i>Timon lepidus</i> | 2 | 2 |
| <i>Timon tangitanus</i> | 1 | 1 |

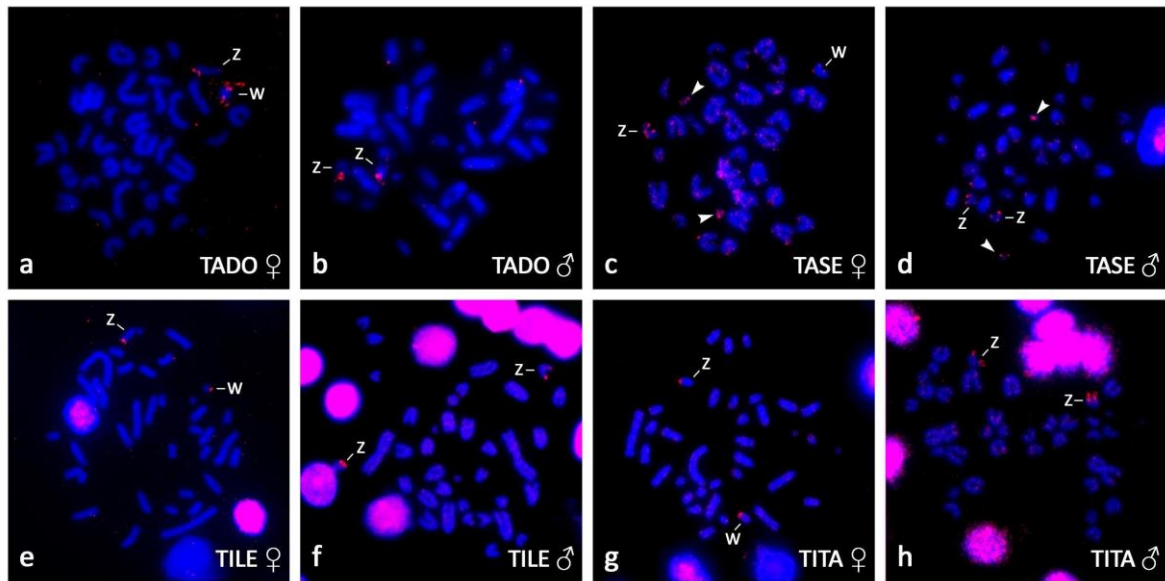


Figure S1. Mitotic metaphase chromosomes hybridized with the $(GATA)_8$ probe in (a) female and (b) male of *Takydromus dorsalis* (TADO), (c) female and (d) male of *Takydromus sexlineatus* (TASE), (e) female and (f) male of *Timon lepidus* (TILE), (g) female and (h) male of *Timon tangitanus* (TITA). Chromosomes were counterstained with DAPI (blue), the hybridization probes were detected with fluorescein-avidin D (red). The Z and W chromosomes are indicated, microchromosomes in *Takydromus sexlineatus* with additional signals are pointed with white arrows.