

Table S1. Oligonucleotides used to amplify mtDNA templates for sequencing.

Name	Sequence	Position of the 5'-end on COS-7 mtDNA	Fragment length, bp
Agm15617F	gccctctactccctccacatatt	11387	~15617*
Agm15617R	ttgaggcgttctgcttggttac	10608	
agmMitF10556	cacccttattcccacctaate	10549	1009
agmMitR11565	acaggaggtgaaccctagaa	11557	
agmF33	ctaactcatgtcgttattgatc	1,079	3746
agmR_6	gggtaggtatgggaagggg	3005	
agmF33	ctaactcatgtcgttattgatc	16079	1255
agmR_1	gggctaagcatagtggggta	514	
agmNUCf	gtcagagagaagagggctagaa	n/a	570
agmNUCr	tctgtgctagatgacaccaac	n/a	

*Based on GenBank KU682691.1

n/a, not applicable

Table S2. Sequencing primers.

Name	Sequence	Position of the 5'-end on COS-7 mtDNA
agmF1	cccaaagcaagacactgaa	17
agmF2	agctaaaccccacctaactgt	387
agmF3	agagtgctaattgaacgaggc	862
agmF4	tgggaagatttacggtagagg	1382
agmF5	aggaactcggcaaaactaaacc	1879
agmF6	ccatatcaacaatagagttacgacc	2374
agmF7	tacggactactacaacccttcg	2851
agmF8	gccattcgcctattctttat	3377
agmF9	tcacaccttcccgtactaatt	3868
agmF10	gaggcctaaaccagacacaatt	4389
agmF11	tcacatcatttctaccctct	4872
agmF12	cacaaagacatcggaacctat	5354
agmF13	cccattgtttgtctgatctgt	5862
agmF14	accggtattatcttagcaaaactca	6380
agmF15	aaccggttcaagccaatccta	6890
agmF16	cttaaaccaggagaccttga	7384
agmF17	actgctaaacatatattactatcaacc	7864
agmF18	gtcatccaaccagtagccct	8392
agmF19	accttcgatatggcatagtctct	8857
agmF20	tctctatttactgatgagggtcct	9385
agmF21	tcaccataactaaccatgtcacc	9872
agmF22	ctcttctgacactaaccgcttg	10369
agmF23	cgccgcagtactcttaaaacta	10870

agmF24	ctaatcacagccctctactccc	11378
agmF25	gccttcattactagtcttctcca	11882
agmF26	ctaaattccaaccccaaacccc	12365
agmF27	cctcacctcaacttcctactt	12856
agmF28	tgccacacctaaacctactcat	13365
agmF28.5	taaccaacaacacacttaacg	14050
agmF29	gacgtaaaccatggctgaatca	14376
agmF30	taacactactttcaccgcacct	14887
agmF31	agaaagcacttgacttcaccac	15379
agmF32	tgatccggcatctggttctta	15856
agmF33	ctaactcatgtcgttattgatc	16079
agmF34	gccaaagcttatattttatc	16276
agmF6.5	ttaacaaagcaccacaaatc	2609
agmR0.5	gggaggcttgcatgtgtaat	129
agmR_1	gggctaagcatagtggggta	514
agmR_2	tatccaagtgcaccttccgg	1015
agmR_3	acaaggggattaagtggttctg	1497
agmR_4	ctttgcacggtcagggtac	2003
agmR_5	attgctccggtctgaactca	2499
agmR5.5	agaagaggggttgaacctct	2717
agmR_6	gggttaggtatgggaagggg	3005
agmR_7	aggaggagtgttttggtggt	3521
agmR_8	tgttatttctaggcctgctcag	3995
agmR_9	gggttgatggttgggttg	4493
agmR_10	tgcagtccttatgtttcaga	5012
agmR10.5	ttggcctagttcagctcga	5449
agmR_11	aggtgttggtataggatagggtc	6021
agmR11.5	tgggcgacaacatagtagct	6447
agmR_12	tagttgaactgggtgggcc	7024
agmR_13	tgtggggatagttcatgagtgt	7504
agmR_14	gggattgtggcaggtgatt	8009
agmR_15	agatcagtgaagtagcgggg	8521
agmR15.5	tccgggtactgcatctgttt	7534
agmR15.7	acttctaagggatttaacggggt	9010
agmR_16	aagggtgttgattgttagagct	9512
agmR_17	ccatgagggcgattgtgatg	10029
agmR_18	tctgtggccatgaatgtaga	10518
agmR_19	cgtaggcagattgagcttgt	11010
agmR_20	tggggttaagggatagaagga	11531
agmR_21	gcgattggggtgaatattacgg	12033
agmR_22	agagtggagtagggctgaga	12502
agmR_23	gaggtggcgatgagagtgat	13005
agmR_24	tgagaaaggagaggagtatagc	13532
agmR_25	agccttctctatttacgggg	14025
agmR_26	taggagaaggaatgagccgt	14492

agmR27.5	gatatcttgattgtgtagtag	14849
agmR27.4	cctaggatatcttgattgtg	14854
agmR_27	tcatgttgtagcagtaatgc	15529
agmR_28	ttgcgtgcagaccagagata	16018
agmR_29	gtaggtggtgtctttggggt	16801

Supplementary Figure S1.

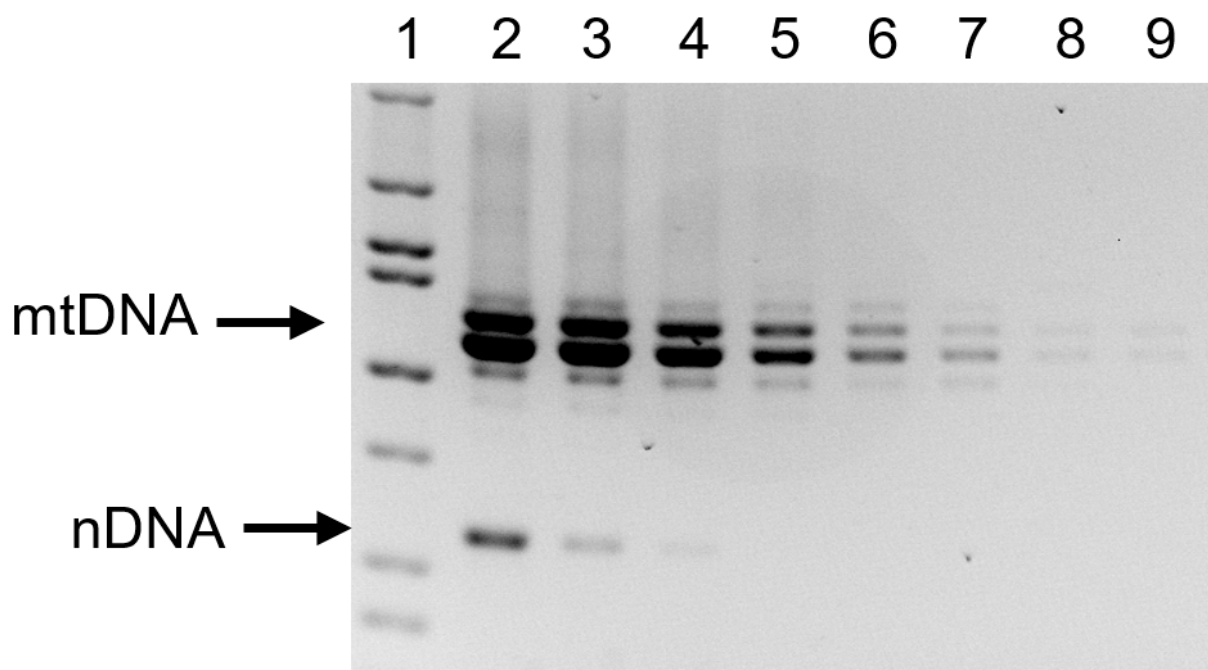


Figure S1. Relative amplification of the mtDNA tandem repeats region vs. nDNA. Lanes: 1. HiLo DNA ladder. Lanes 2-9, serial 3x dilutions of COS-7 genomic DNA were amplified with primers agmNUCf, agmNUCr, agmF33, and agmR_6 with products of amplification of 1 ng of DNA present in Lane 2.