

Figure S1. Overexpression of *CCC1* induces a decrease in the growth rate. Yeast cells described in Figure 2 were inoculated at an OD₆₀₀ of 0.2 in liquid SC-ura medium supplemented with 500 μ M FAS. The OD₆₀₀ was recorded every 30 minutes with a Spectrostar Nano absorbance 96-plate reader for 36 hours at 28°C. The average curve and standard deviation of at least three independent biological replicates is shown.

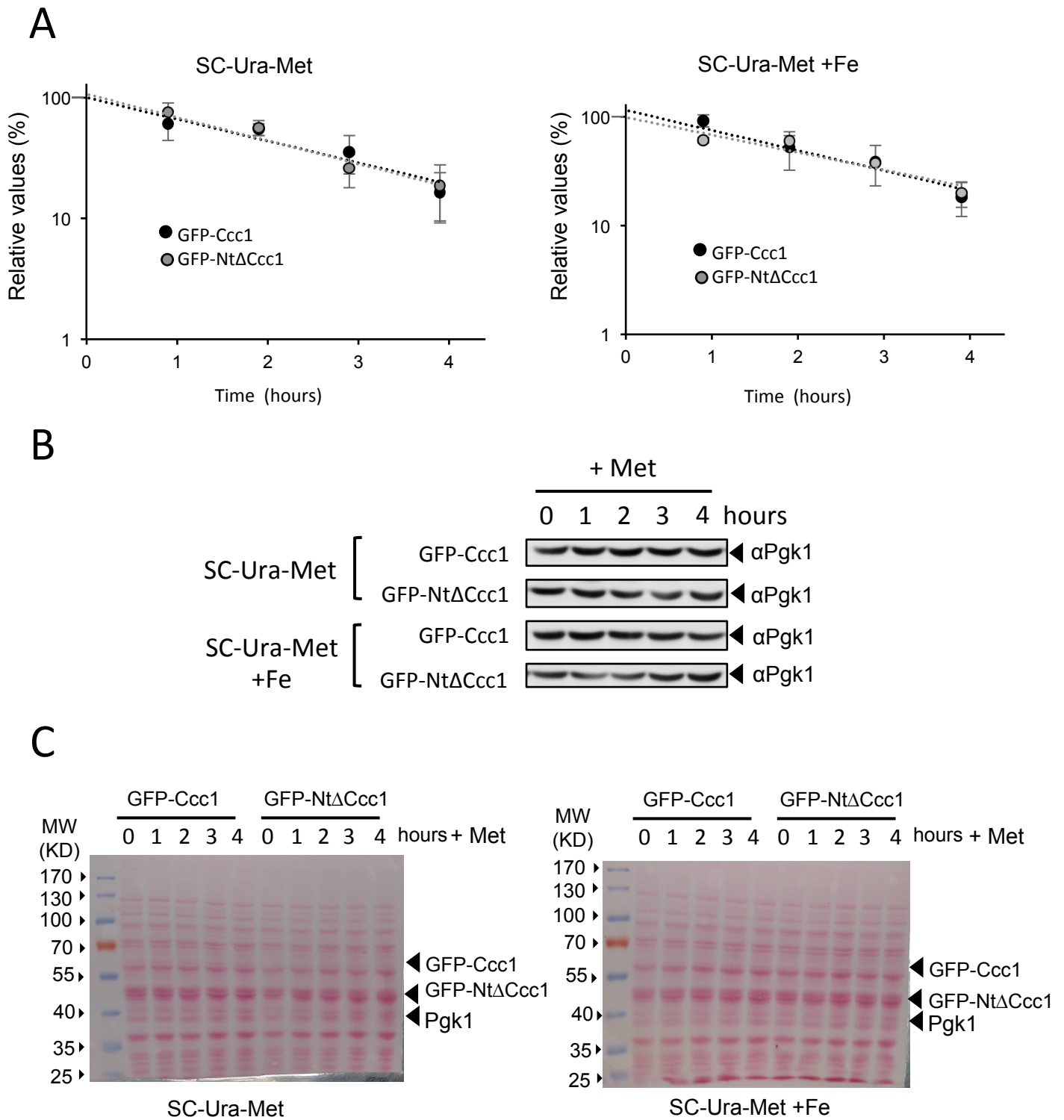


Figure S2. GFP-Ccc1 and GFP-NtΔCcc1 protein stability quantification and loading controls. **(a)** Quantification of GFP-Ccc1 and GFP-NtΔCcc1 protein levels. The average of three different samples and its standard deviation is represented. **(b)** Western blot for Pgk1 protein levels. **(c)** Ponceau staining.