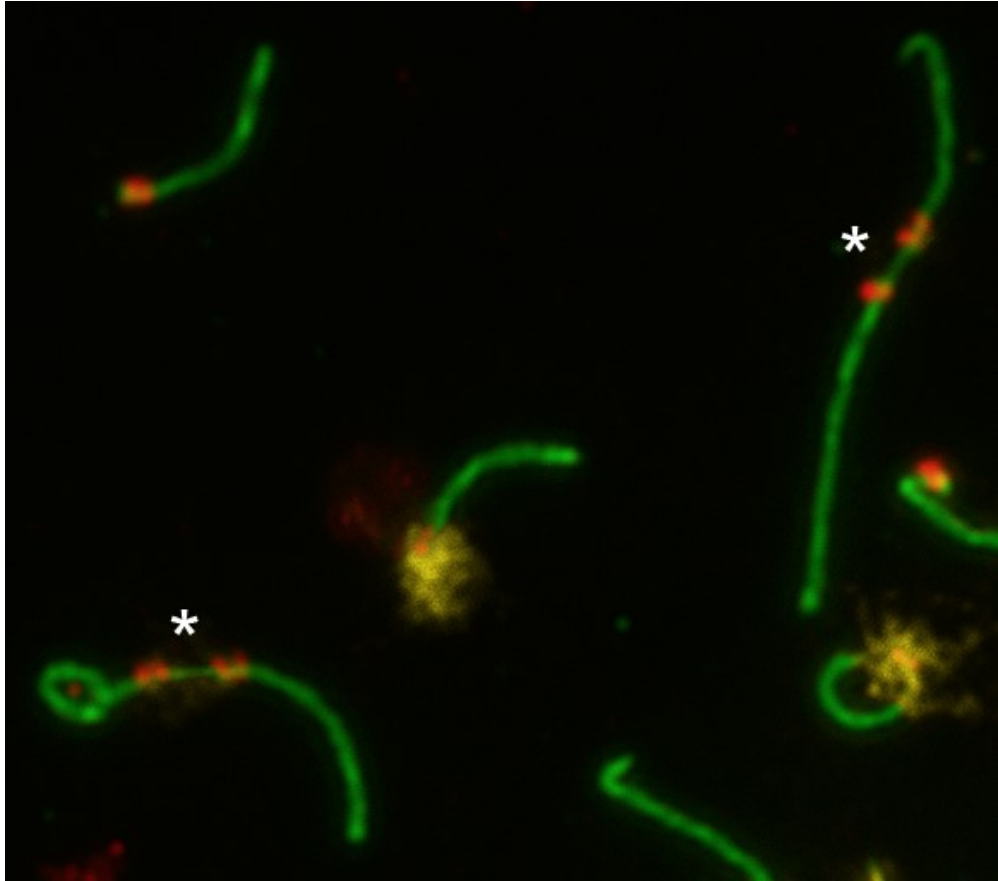


# Nonhomologous Chromosome Interactions in Prophase I: Dynamics of Bizarre Meiotic Contacts in the Alay Mole Vole *Ellobius alaicus* (Mammalia, Rodentia)

† These authors contributed equally to this work

[illegible]



**Figure S1.** Meiotic contacts of nonhomologous chromosomes in pachytene and H3K9me3 histone distributions in *E. alaicus* spermatocytes. Lateral elements of the SCs were visualized using the anti-SYCP3 antibody (green). Kinetochores were detected using the anti-CREST antibody (red). Heterochromatin was detected by means of an anti-H3K9me3 antibody (yellow). Regions of chromosome contacts were marked by an asterisk.