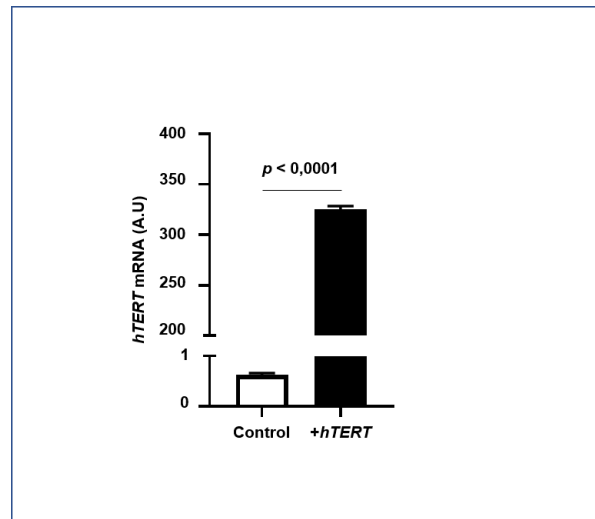
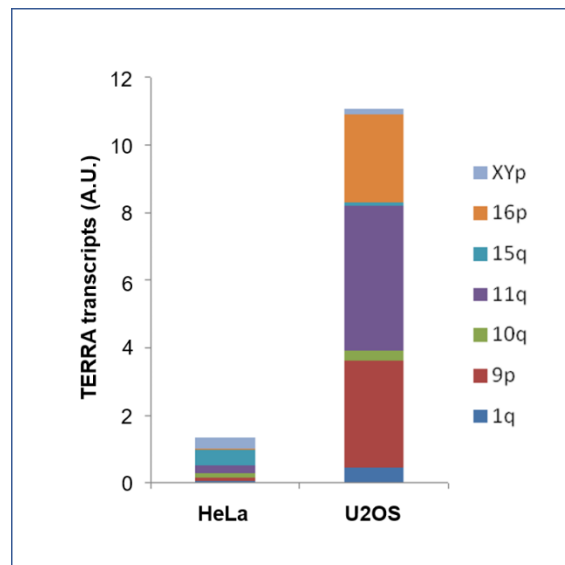


SUPPLEMENTARY DATA

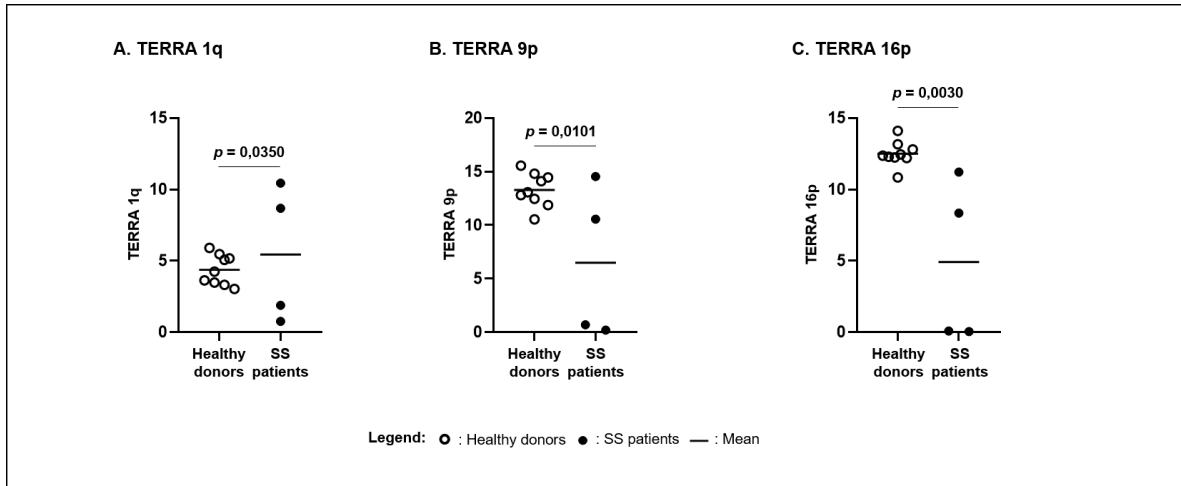
Supplementary Figures:



Supplementary Figure S1. *hTERT* expression in transduced SS cells. The expression of *hTERT* was assessed in transduced SS cells by RT-qPCR.



Supplementary Figure S2. *TERRA* levels in HeLa and U2OS. The detailed individual expression of TERRA in the control cell lines.



Supplementary Figure S3. *hTERT* impact on TERRA. The expression of TERRA from chromosome ends 1q, 9p and 16p were analysed in SS patients and in healthy controls. Statistical analysis results are displayed on each graph. Significance level: $p = 0.05$.

Supplementary Table S1. Primers sequences used for TERRA amplification.

Primers	Primer sequence
TERRA 1q (56)	
Fw	5'-GCATTCCTAATGCACACATGAC-3'
Rv	5'-ACCCTAACCCGAACCCTA-3'
TERRA 9p (56)	
Fw	5'-GAGATTCTCCCAAGGCAAGG-3'
Rv	5'-ACATGAGGAATGTGGGTGTTAT-3'
TERRA 10q (56)	
Fw	5'-ATGCACACATGACACCCTAAA-3'
Rv	5'-TACCCGAACCTGAACCCTAA-3'
TERRA 11q (75)	
Fw	5'-CTGATTATTCAGGGCTGCAAA-3'
Rv	5'-GCCGCATCGACGGTGAATAA-3'
TERRA 15q (67)	
Fw	5'-CAGCGAGATTCTCCCAAGCTAAG-3'
Rv	5'-AACCCTAACCACATGAGCAACG-3'
TERRA 16p (75)	
Fw	5'-TGTGTTTCAACGCTGCAACTG-3'
Rv	5'-AGTTAGAACGGTTCAGTGTG-3'
TERRA Xp-Yp (67)	
Fw	5'-GCAAAGAGTGAAAGAACGAAGCTT-3'
Rv	5'-CCCTCTGAAAGTGGACCAATCA-3'
EF1α	
Fw	5'-CTGGAGCCAAGTGCTAACATG-3'
Rv	5'-CCGGGTTTGAGAACACCAGT-3'