

Supplementary material

An Assessment of the Genetic Parameters of Boars' Reproductive Traits

Emil Krupa^{1*}, Zuzana Krupová¹, Eliška Žáková¹, Jiří Bauer², Nina Moravčíková³, Irena Vrtková⁴

¹ Institute of Animal Science, 10400 Prague, Czech Republic; krupova.zuzana@vuzv.cz (Z.K.); zakova.eliska@vuzv.cz (E.Ž.)

² Czech-Moravian Breeders Association, 25209 Hradistko, Czech Republic; bauer@plemdat.cz

³ Institute of Nutrition and Genomics, Slovak University of Agriculture, 94901 Nitra, Slovak Republic; nina.moravcikova@uniag.sk

⁴ Department of Morphology, Physiology and Animal Genetics, Mendel University, Zemedelska 1, 61300 Brno, Czech Republic; irena.vrtkova@mendelu.cz

* Correspondence: krupa.emil@vuzv.cz

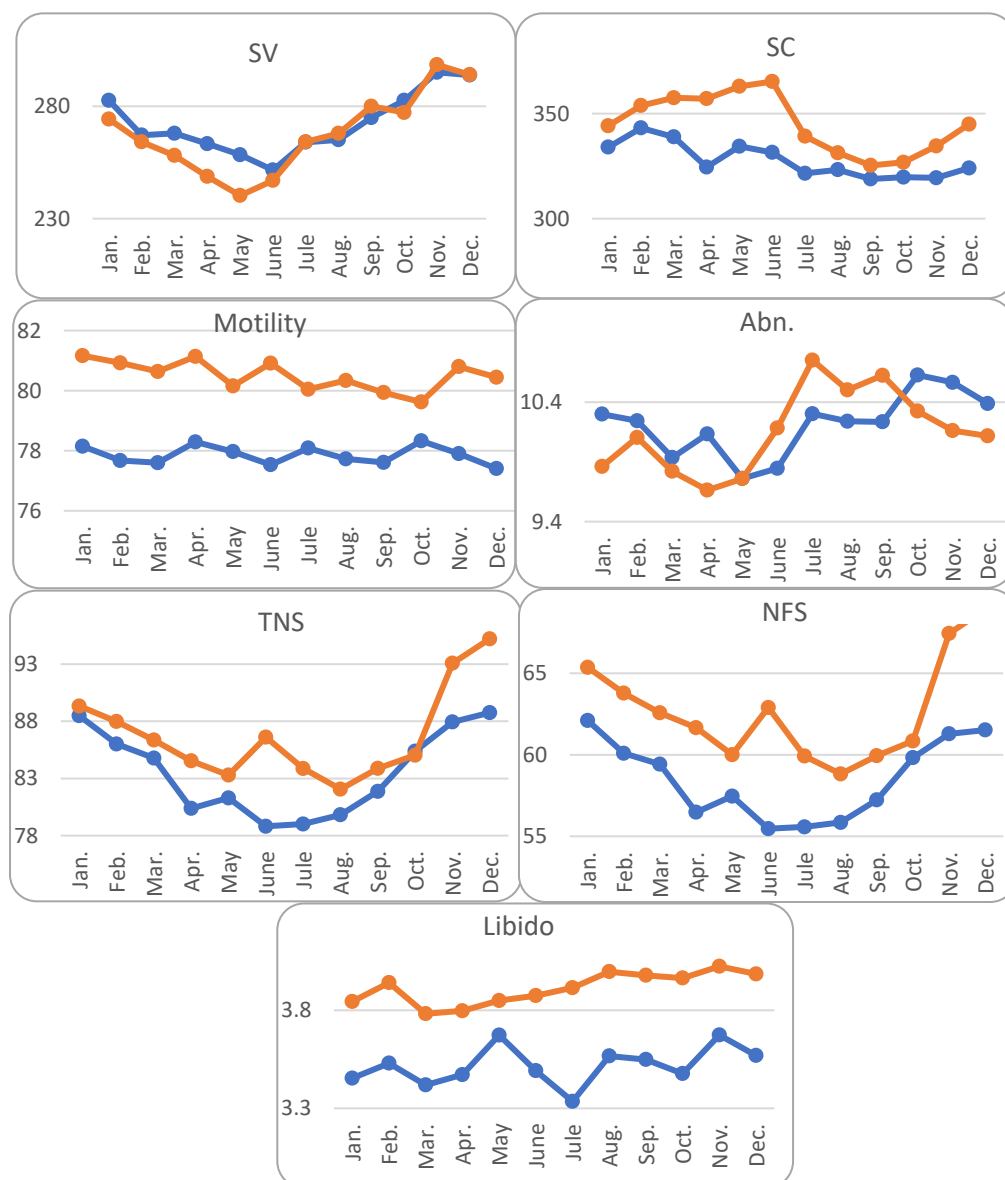


Figure S1: Average monthly trends for reproductive trait and dataset of boars (blue line = dataset D, orange line = dataset S)

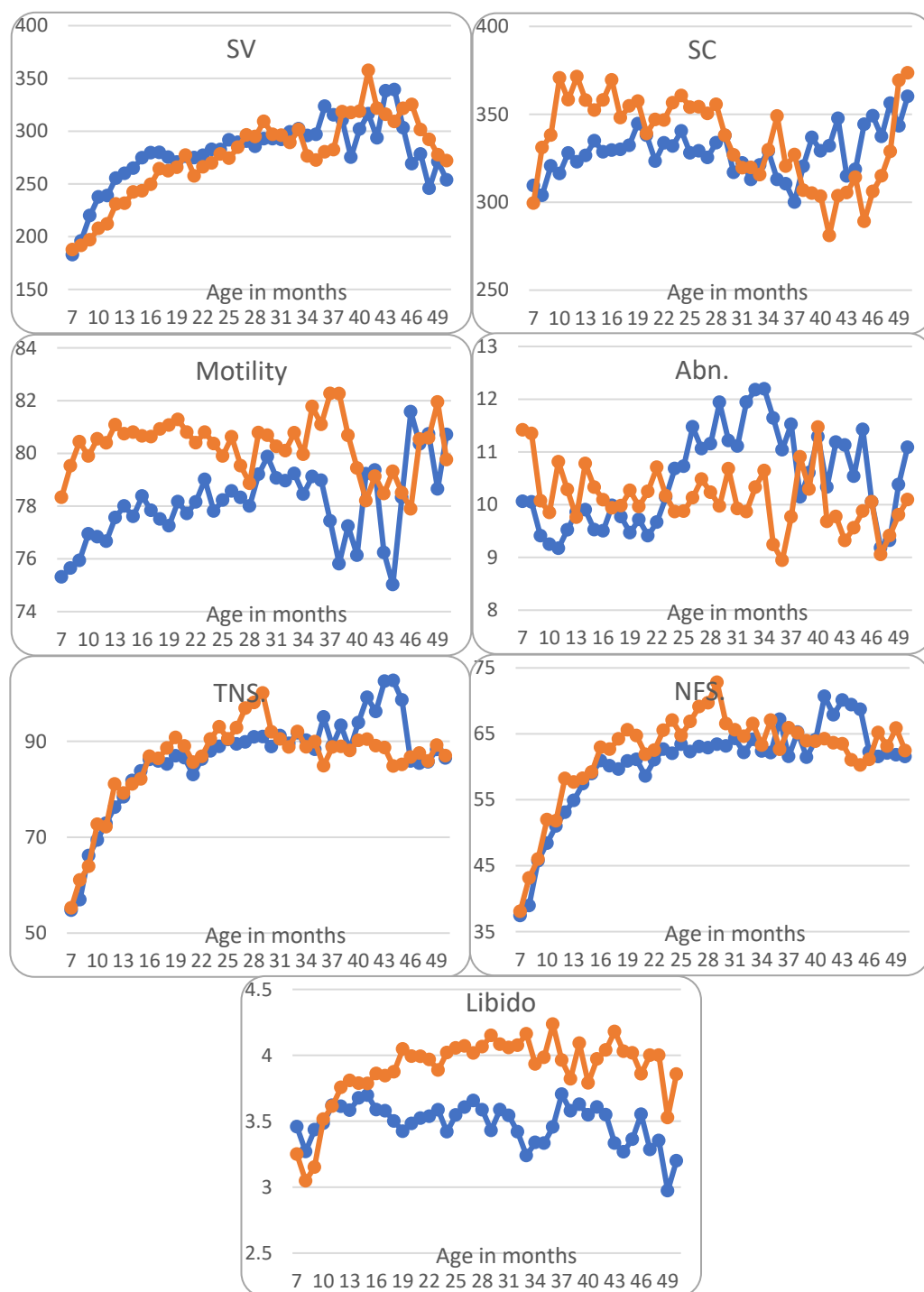


Figure S2: Effect of boar age in month on reproductive trait and dataset of boars (blue line = dataset D, orange line = dataset S)

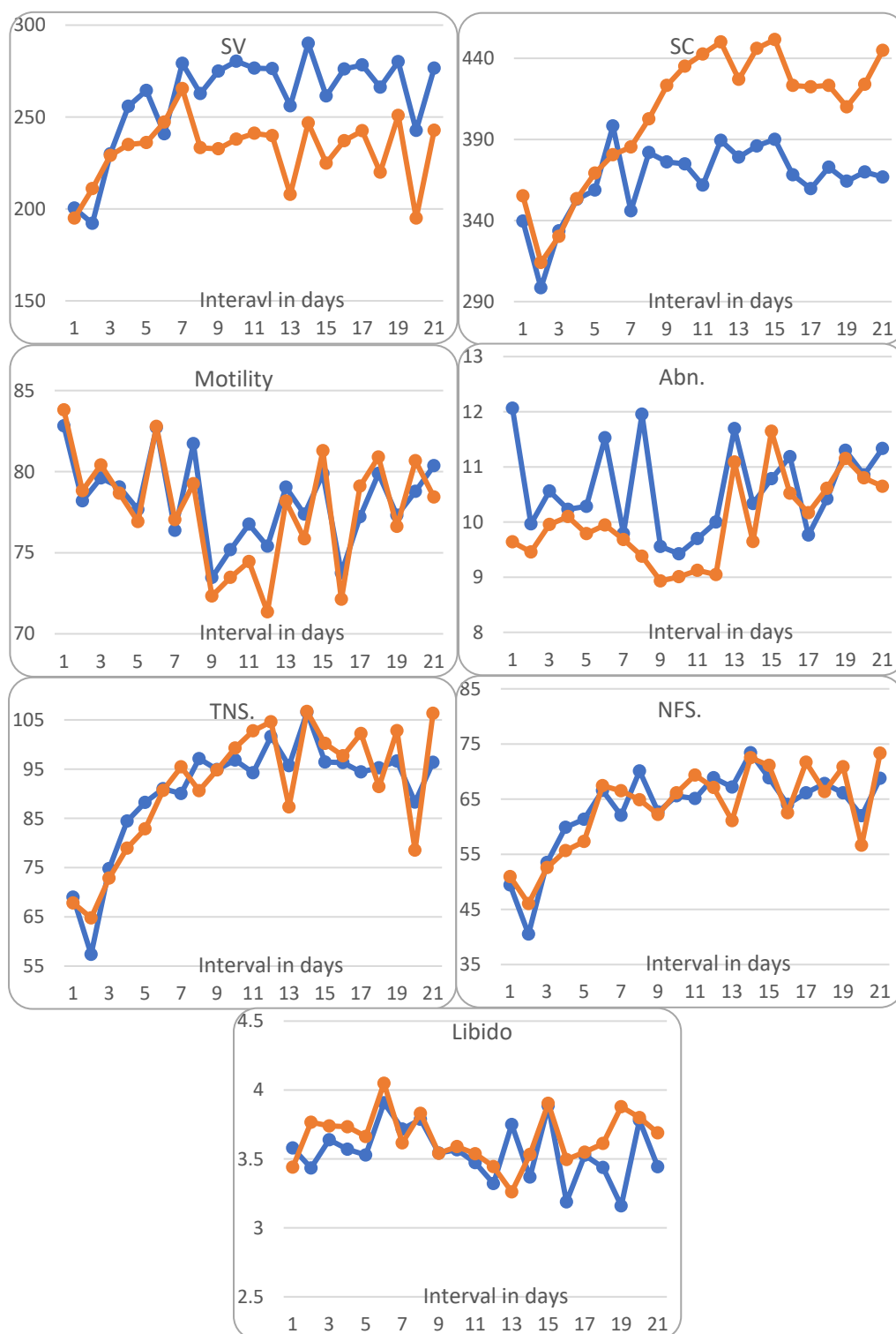


Figure S3: Effect of intervals between two subsequent ejaculates on reproductive trait and dataset of boars (blue line = dataset D, orange line = dataset S)