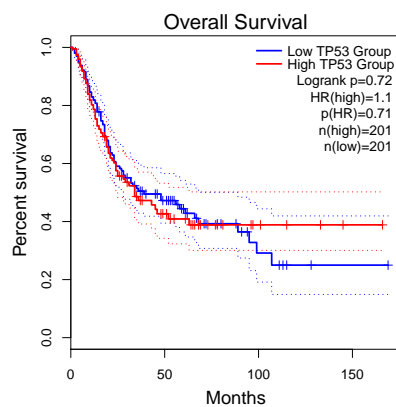
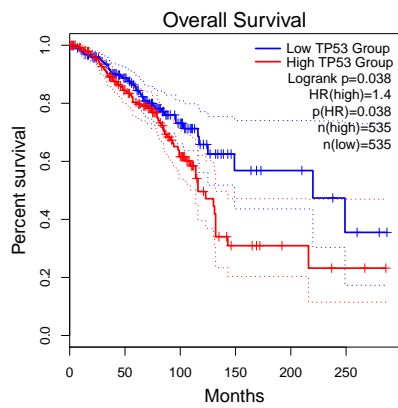


(a) Overall Survival of ACC

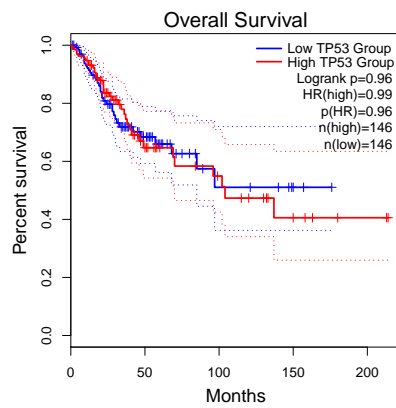


(b) Overall Survival of BLCA

Figure S1: Overall Survival

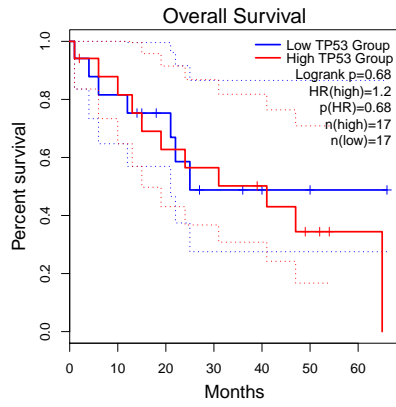


(a) Overall Survival of BRCA

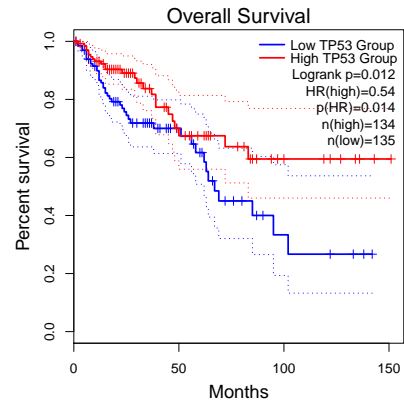


(b) Overall Survival of CESC

Figure S2: OVERALL SURVIVLAL

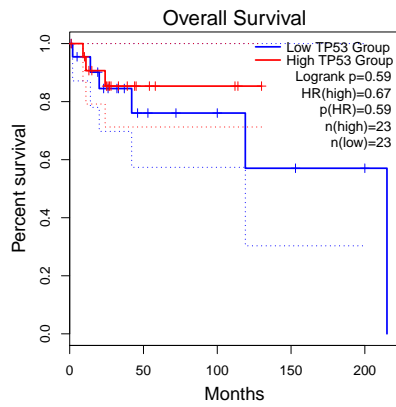


(a) Overall Survival of CHOL

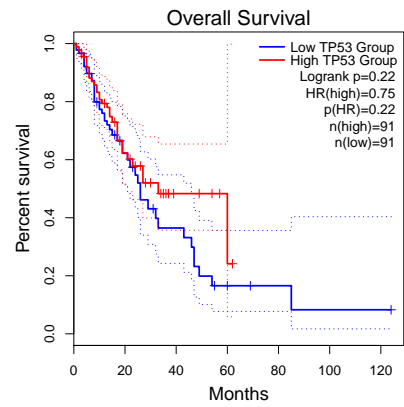


(b) Overall Survival of COAD

Figure S3: Overall Survival

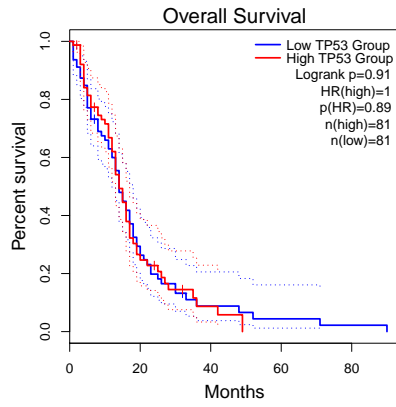


(a) Overall Survival of DLBC

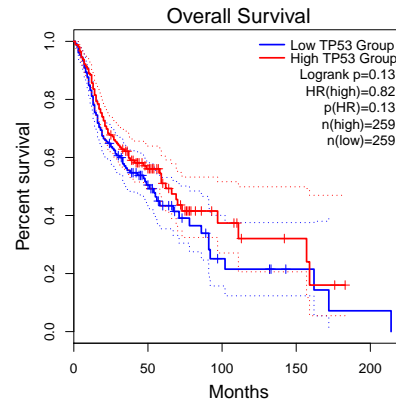


(b) Overall Survival of ESCA

Figure S4: Overall Survival

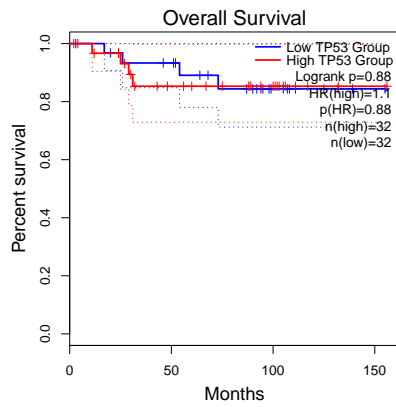


(a) Overall Survival of GBM

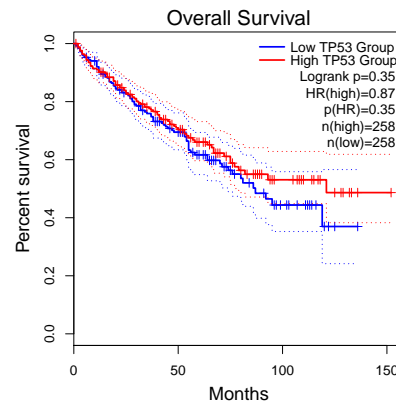


(b) Overall Survival of HNSC

Figure S5: Overall Survival

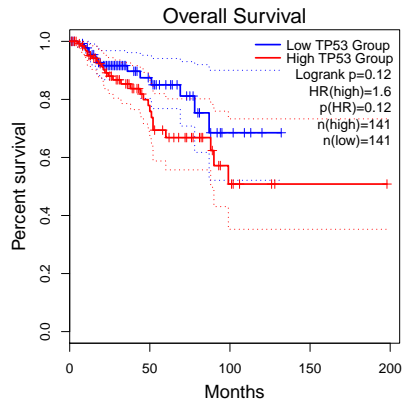


(a) Overall Survival of KICH

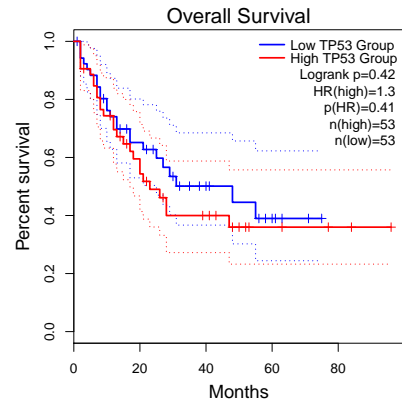


(b) Overall Survival of KIRC

Figure S6: Overall Survival

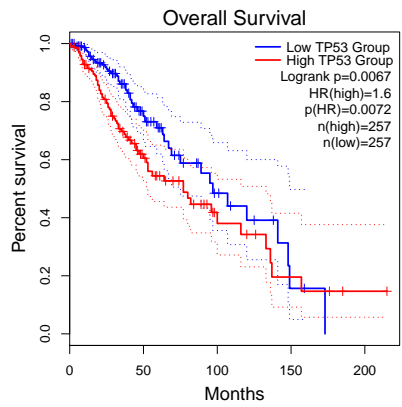


(a) Overall Survival of KIRP

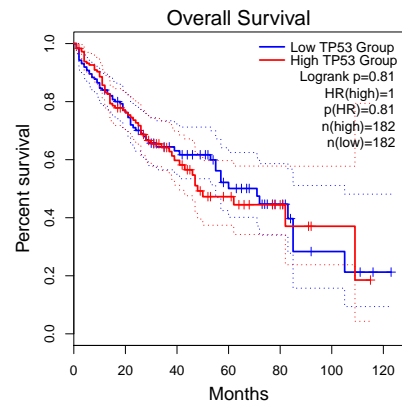


(b) Overall Survival of LAML

Figure S7: Overall Survival

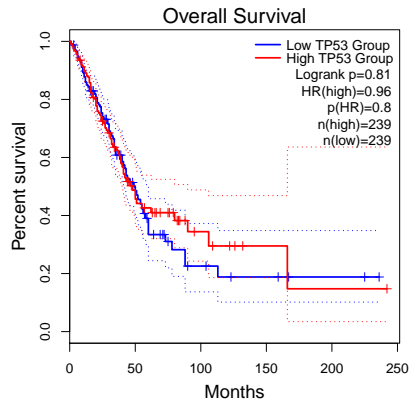


(a) Overall Survival of LGG

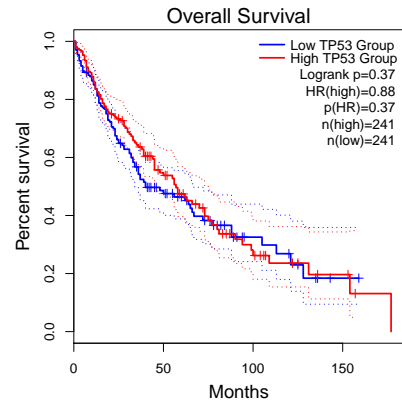


(b) Overall Survival of LIHC

Figure S8: Overall Survival

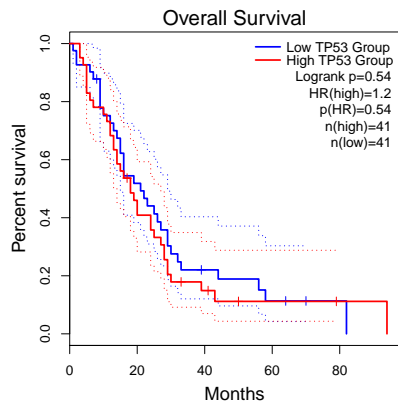


(a) Overall Survival of LUAD

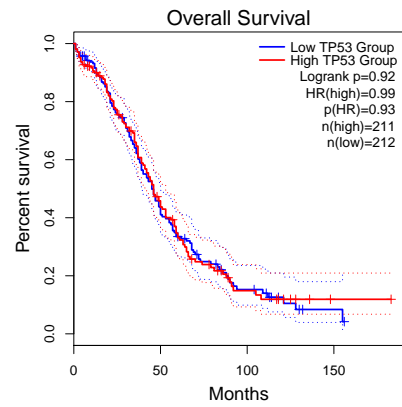


(b) Overall Survival of LUSC

Figure S9: Overall Survival

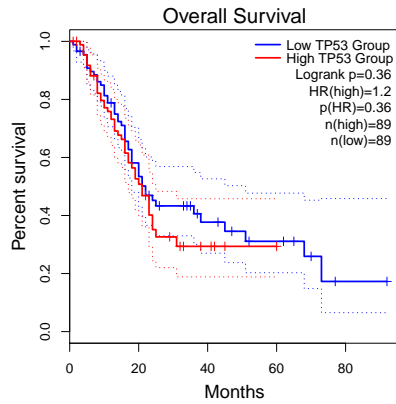


(a) Overall Survival of MESO

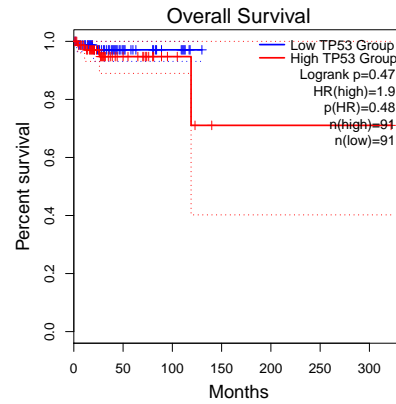


(b) Overall Survival of OV

Figure S10: Overall Caption for both Images

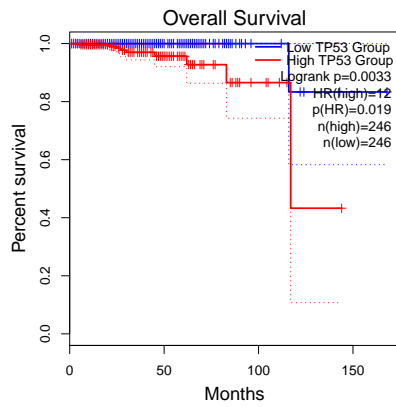


(a) Overall Survival of PAAD

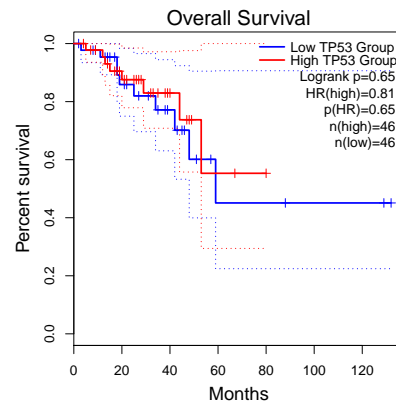


(b) Overall Survival of PCPG

Figure S11: Overall Survival

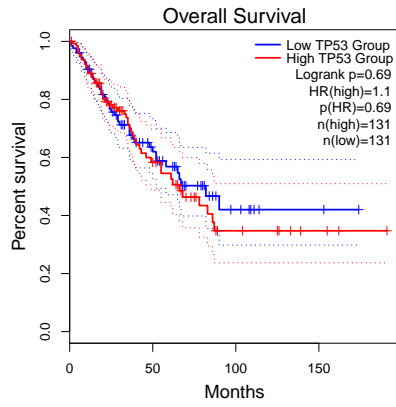


(a) Overall Survival of PRAD

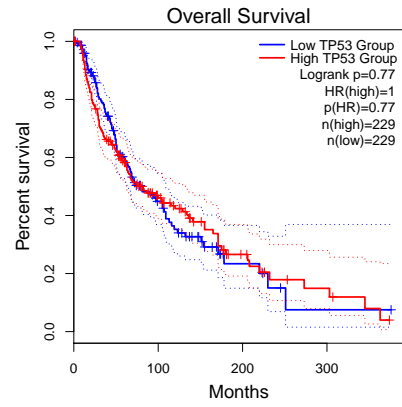


(b) Overall Survival of READ

Figure S12: Overall Survival

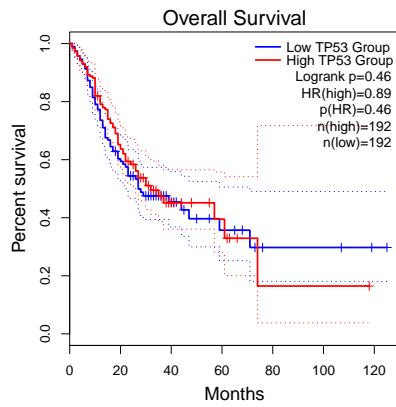


(a) Overall Survival of SARC

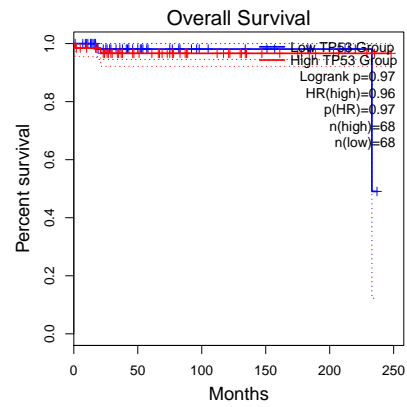


(b) Overall Survival of SKCM

Figure S13: Overall Survival

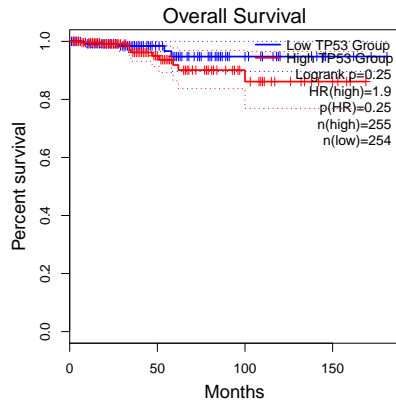


(a) Overall Survival of STAD

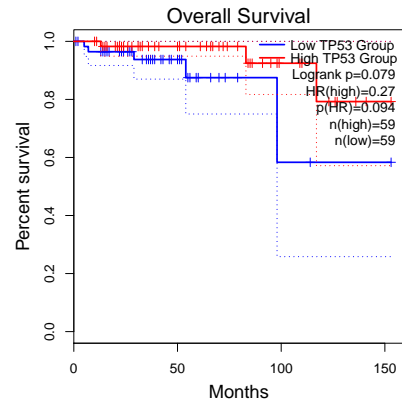


(b) Overall Survival of TGCT

Figure S14: Overall Survival

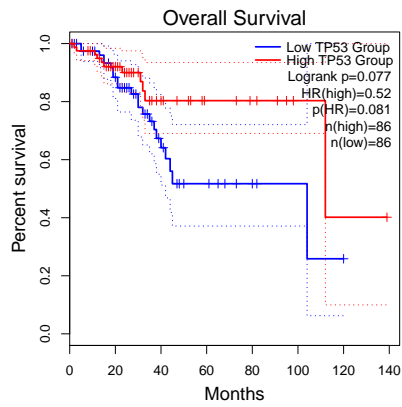


(a) Overall Survival of THCA

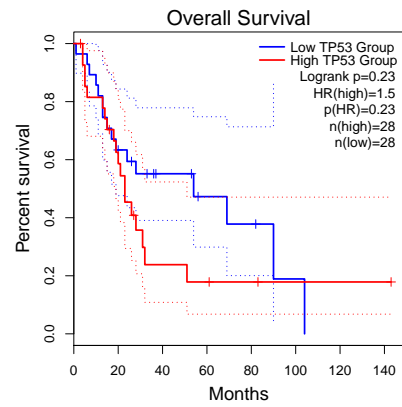


(b) Overall Survival of THYM

Figure S15: Overall Survival



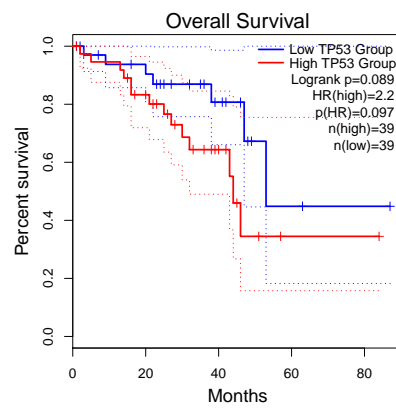
(a) Overall Survival of UCEC



(b) Overall Survival of USC

Figure S16: Overall Caption for both Images





(a) Overall Survival of UVM