

Target	Forward Primer Sequence (qPCR)	Reverse Primer Sequence (qPCR)
EXT1 Exon 3	5' GGAACCAAGCTGCCGTCATA 3'	3' TCTGCTGATGTGTTGAAGGCC 5'
EXT1 Exon 4	5' TGTGGGAGGCTTATTTTCTTCAG 3'	3' AGCCCAAGAGCCAAGTGGTC 5'
EXT1 Exon 5	5' TTCGTACTACCACAGTATTCATCTTATCTGGG 3'	3' CCTGGAGGAAATTCACTTACCTAAATTAG 5'
ACTB	5' CAGGTCATCACCATTGGCAAT 3'	3' CAGTCTCCACTCACCCAGGAAG 5'

Target	Forward Primer Sequence (PCR)	Reverse Primer Sequence (PCR)
Fragment between duplicated Exons 4	5' GAAGATTGTATTAACACTACTAGAG 3'	3' GAATAGACCTGATTGTAGAAGGA 5'

Table S1. Primer sequences.

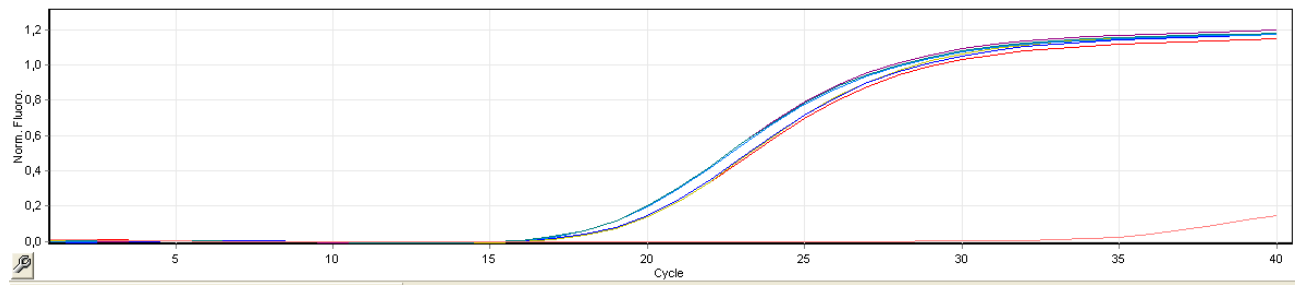


Figure S1. qPCR amplification curves of patients (left group) and wild type controls (right group).