

Supplementary

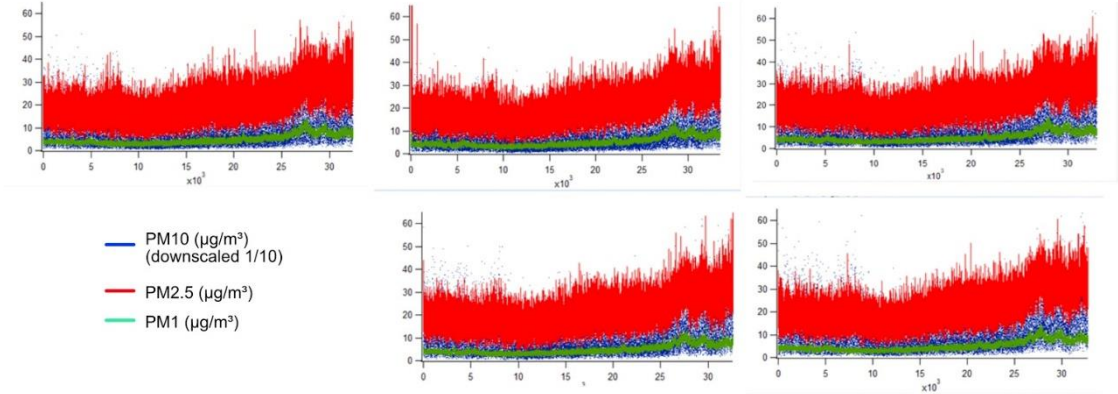


Figure S1. Simultaneous co-located overnight measurements from the 5 Alphasense instruments performed in Adama prior to the dry season campaign.

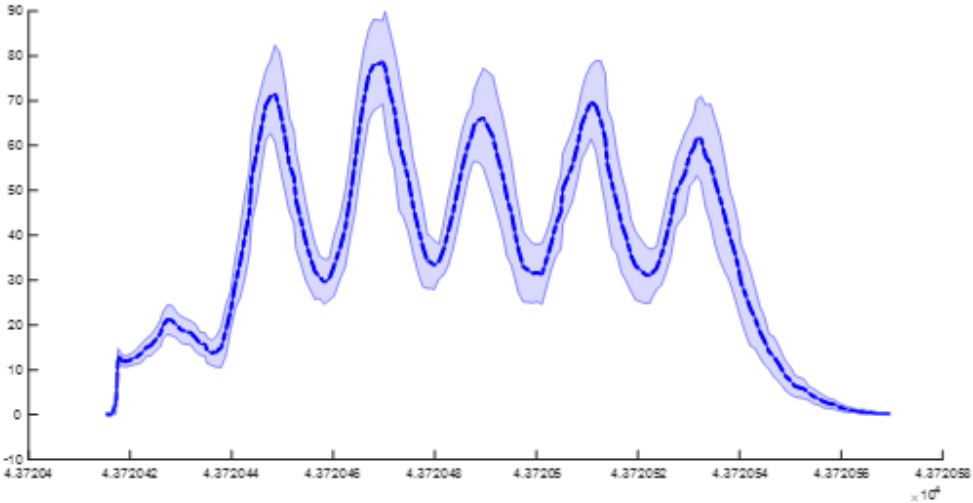


Figure S2. The agreement between the 20 Purple Air used during the wet season. Data assessed in a laboratory environment, where diesel exhaust was generated. The dark blue line is the average value of PM2.5 and the light blue area is the standard deviation between the 20 sensors.

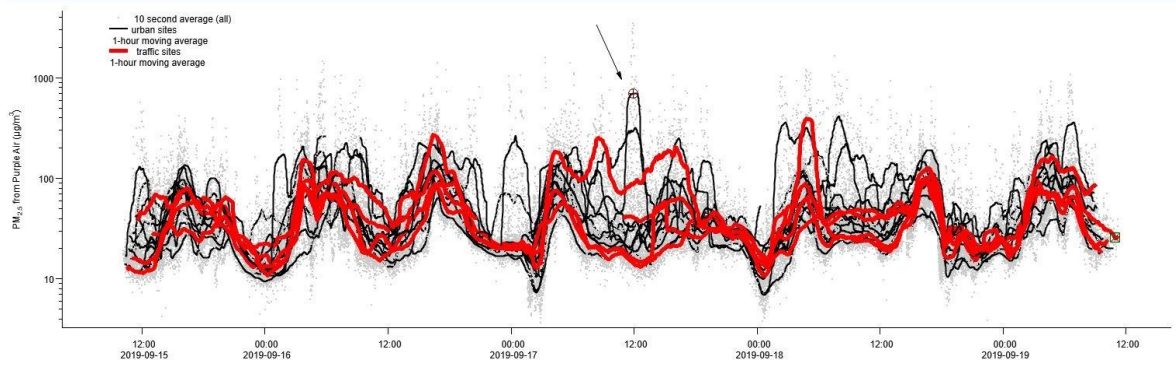


Figure S3. Measured PM_{2.5} concentrations during the wet season campaign at urban (n = 8) and traffic (n = 6) sites. The arrow points to an event with elevated concentrations during lunchtime at one site, an exception in this dataset.