

Supplement materials for

Cold Waves in East China and their Response to Two Types of Arctic Amplification

Figure S1:

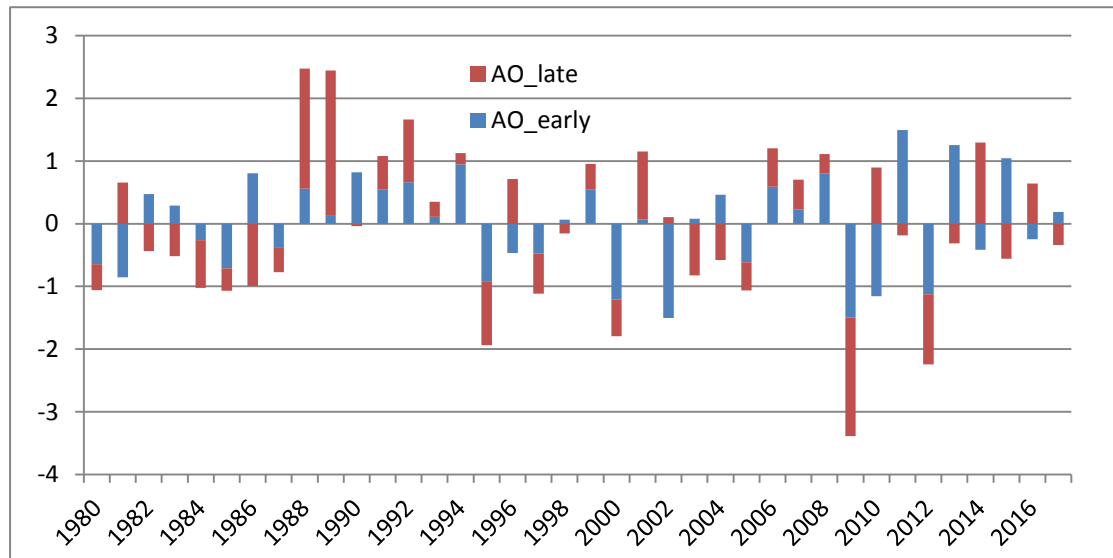


Figure S1. The Inter-annual variation of AO in early and late winter.

In some years (e.g.1981-1983, 2011-2018), AO index are in opposite phase in early and late winters: positive AO in early winter and negative AO in late winter, and vice versa. If we combined early and late winter together, these signals would be smoothed out.

Figure S2:

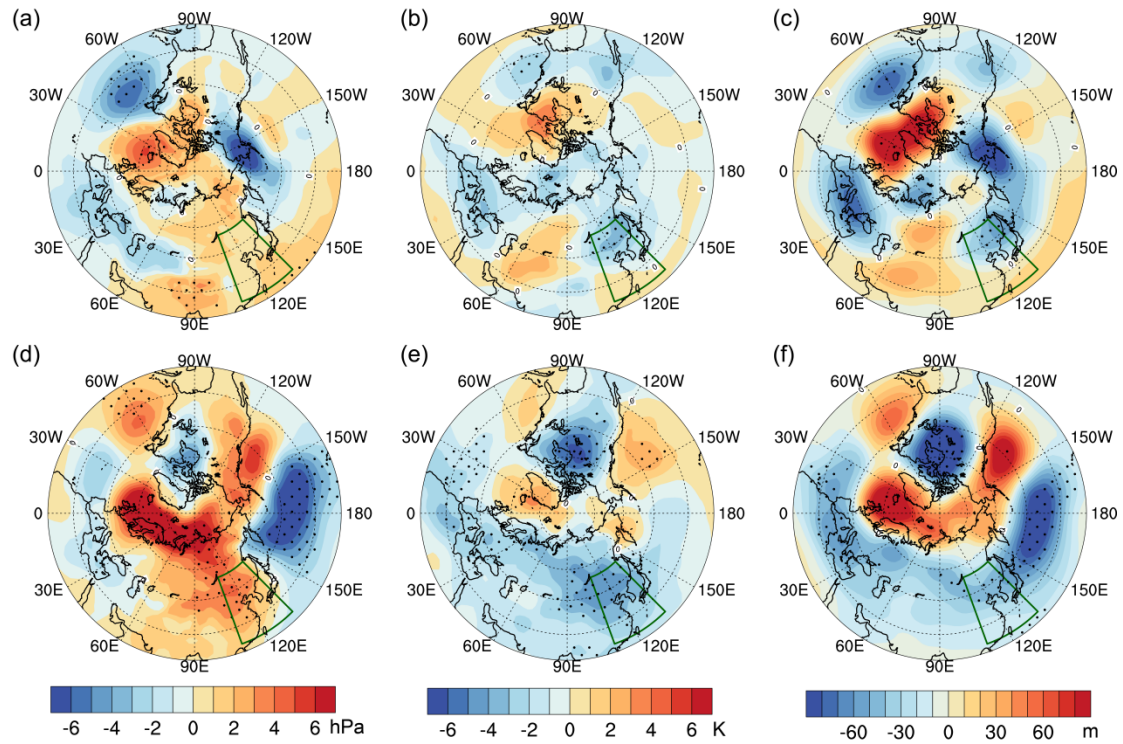


Figure S2. The difference between early and late winter of composite analysis in Figure 5.((a) the SLP , (b) 850hPa temperature and (c) 500hPa geopotential height related with AO; (d-f) the same as (a-c) but related with DET_CAI. Dotted areas are the regions passing 95% significant level.