

Supplementary Materials

Dry and Wet Climate Periods over Eastern South America: Identification and Characterization through the SPEI Index

Anita Drumond ^{1,*}, Milica Stojanovic ², Raquel Nieto ³, Luis Gimeno ³, Margarida L.R. Liberato ^{2,4},
Theotonio Pauliquevis ¹, Marina Oliveira ¹ and Tercio Ambrizzi ⁵

¹ Instituto de Ciências Ambientais, Químicas e Farmacêuticas, Universidade Federal de São Paulo, Diadema 09913-030, Brazil; theotonio.pauliquevis@unifesp.br (T.P.); oliveira.marina@unifesp.br (M.O.)

² Instituto Dom Luiz, Faculdade de Ciências da Universidade de Lisboa, 1749-016 Campo Grande, Portugal; mstojanovic@fc.ul.pt (M.S.); mlr@utad.pt (M.L.R.L.)

³ Environmental Physics Laboratory (EPhysLab), CIM-Uvigo, Universidade de Vigo, 32004 Ourense, Spain; rnieto@uvigo.es (R.N.); l.gimeno@uvigo.es (L.G.)

⁴ Escola de Ciências e Tecnologia, Universidade de Trás-os-Montes e Alto Douro, 5001-801 Vila Real, Portugal

⁵ Departamento de Ciências Atmosféricas, IAG, Universidade de São Paulo, São Paulo 05508-090, Brazil; tercio.ambrizzi@iag.usp.br

* Correspondence: anita.drumond@unifesp.br

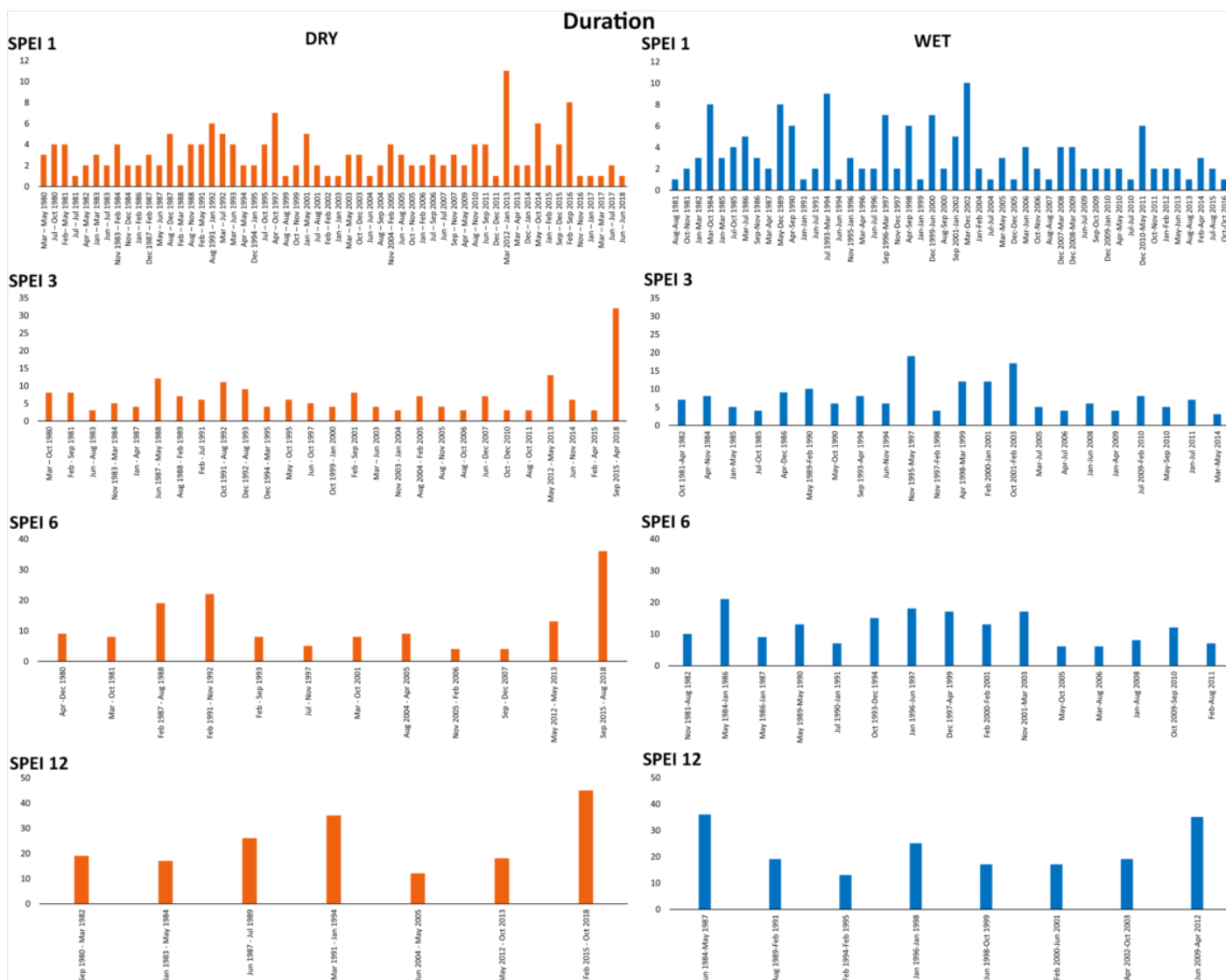


Figure S1. Duration (months) of the dry and wet events listed in the Tables 2 and 3, respectively.

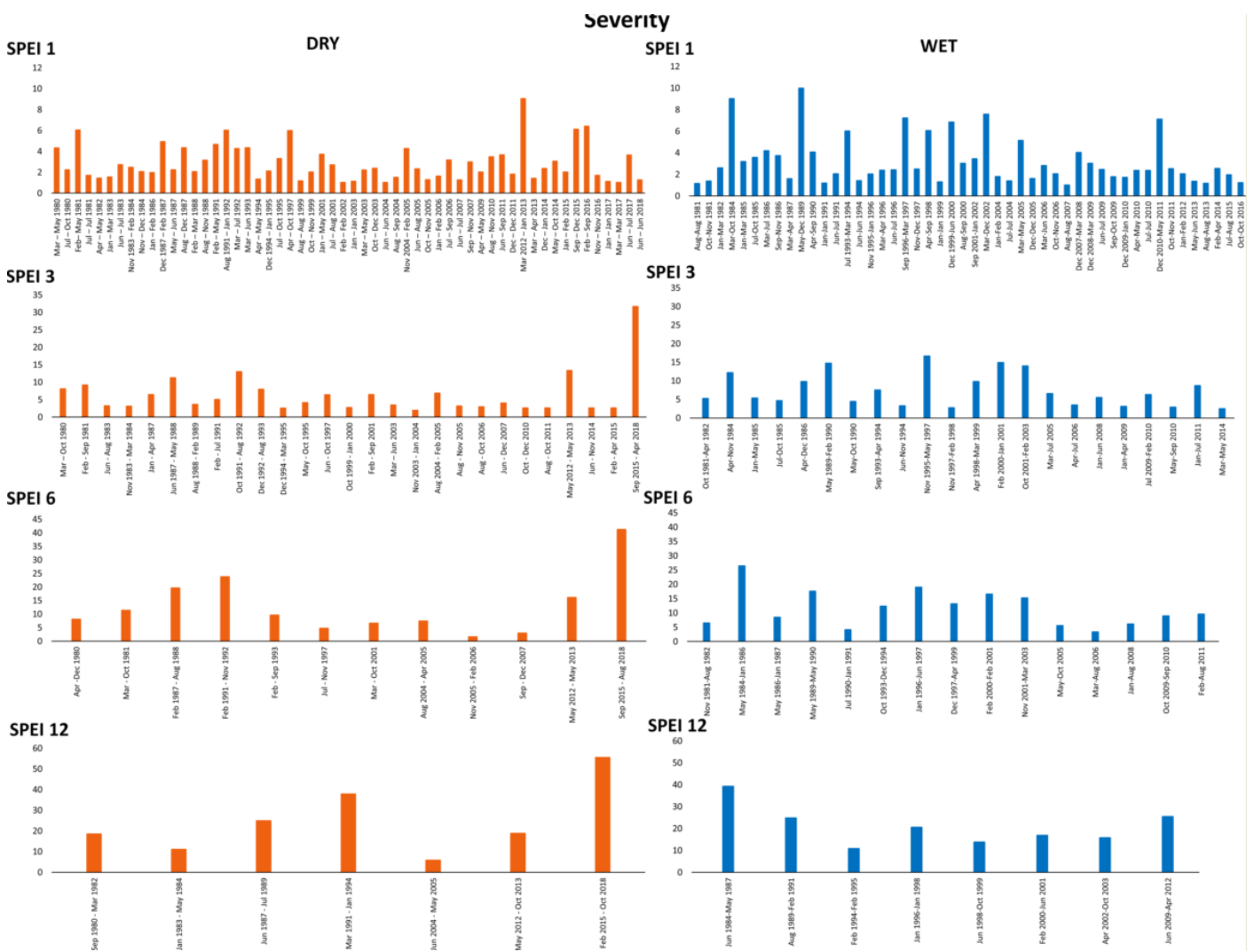


Figure S2. Same as Figure S1, but for severity.

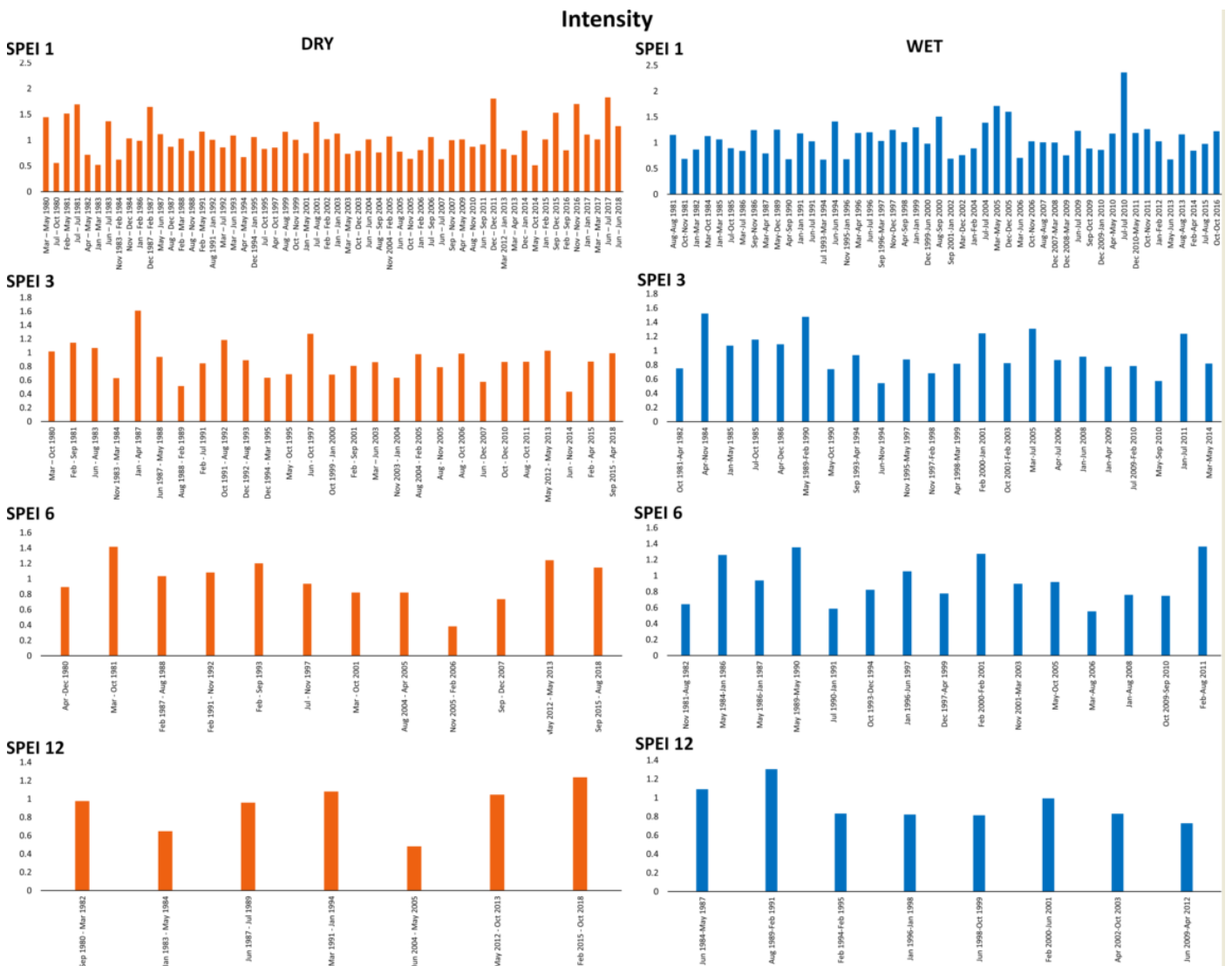


Figure S3. Same as Figure S1, but for intensity.

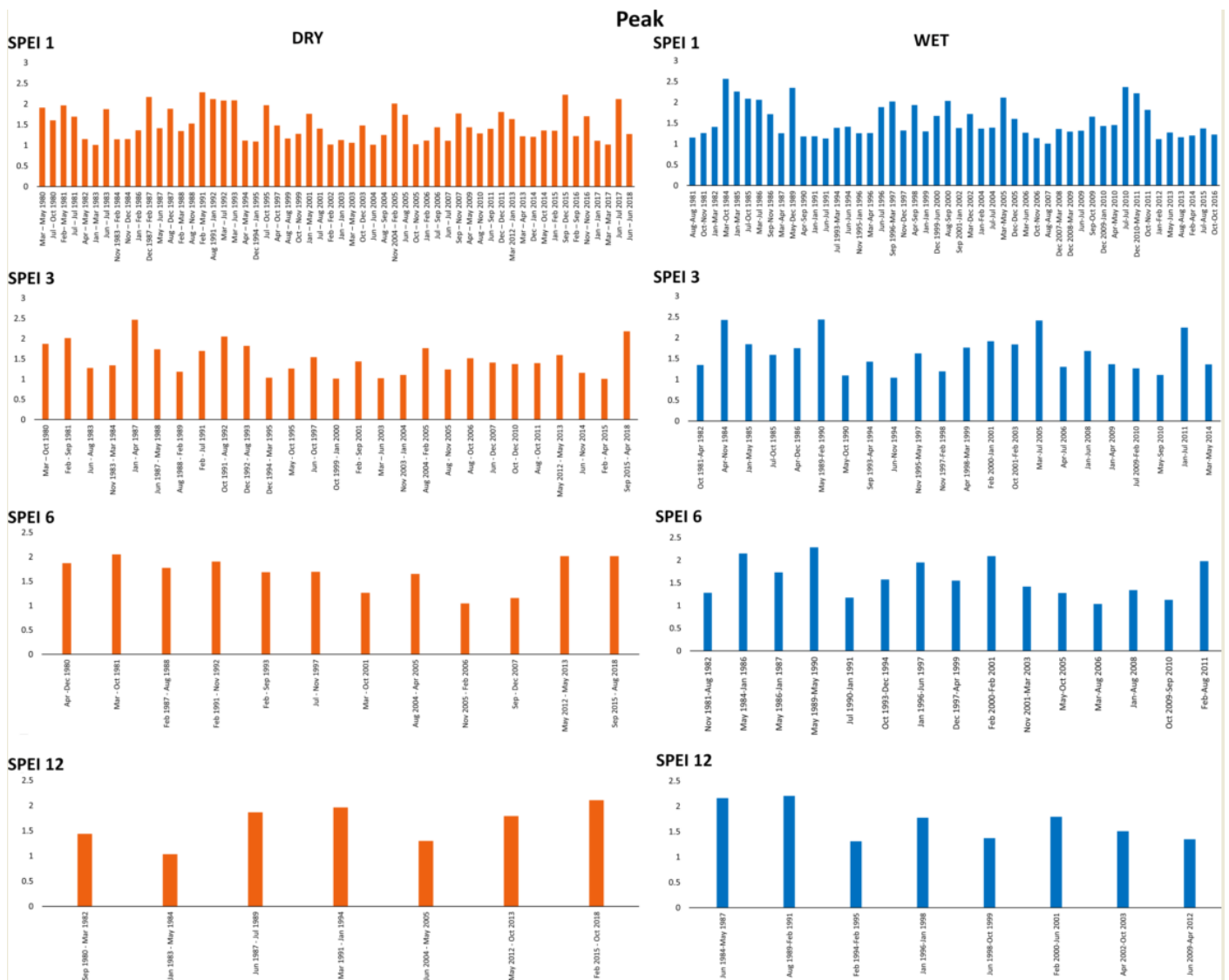


Figure S4. Same as Figure S1, but for peak.