

# Supplementary Materials:

Giovanni Lonati\* and Federico Riva

Dipartimento di Ingegneria Civile e Ambientale, Politecnico di Milano, 20133, Italy;  
federico3.riva@mail.polimi.it

\* Correspondence: [giovanni.lonati@polimi.it](mailto:giovanni.lonati@polimi.it)

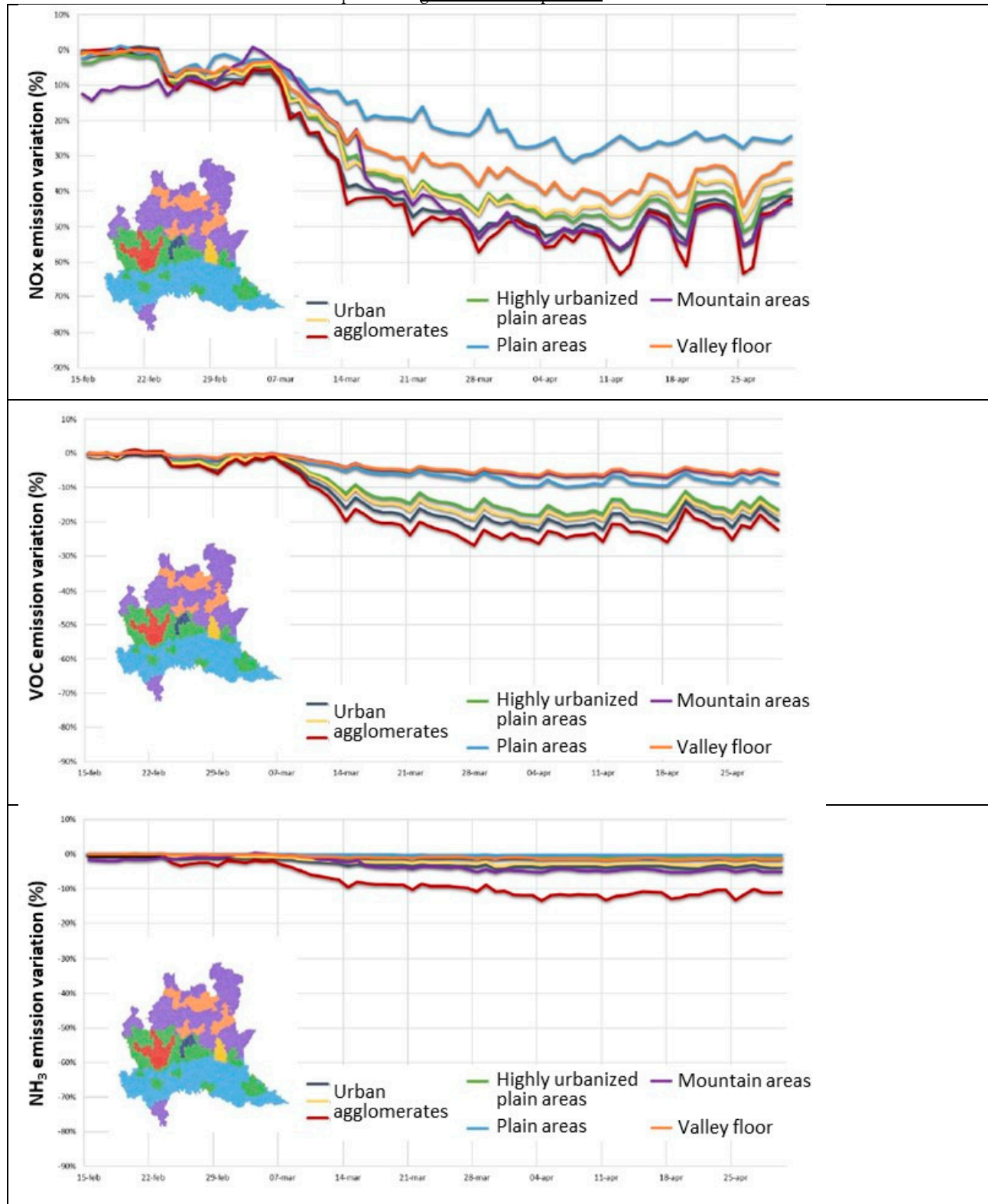


Figure S1. Relative variation of NO<sub>x</sub> (top), VOC (middle), NH<sub>3</sub> (bottom) emission by zones in Lombardia. [32].

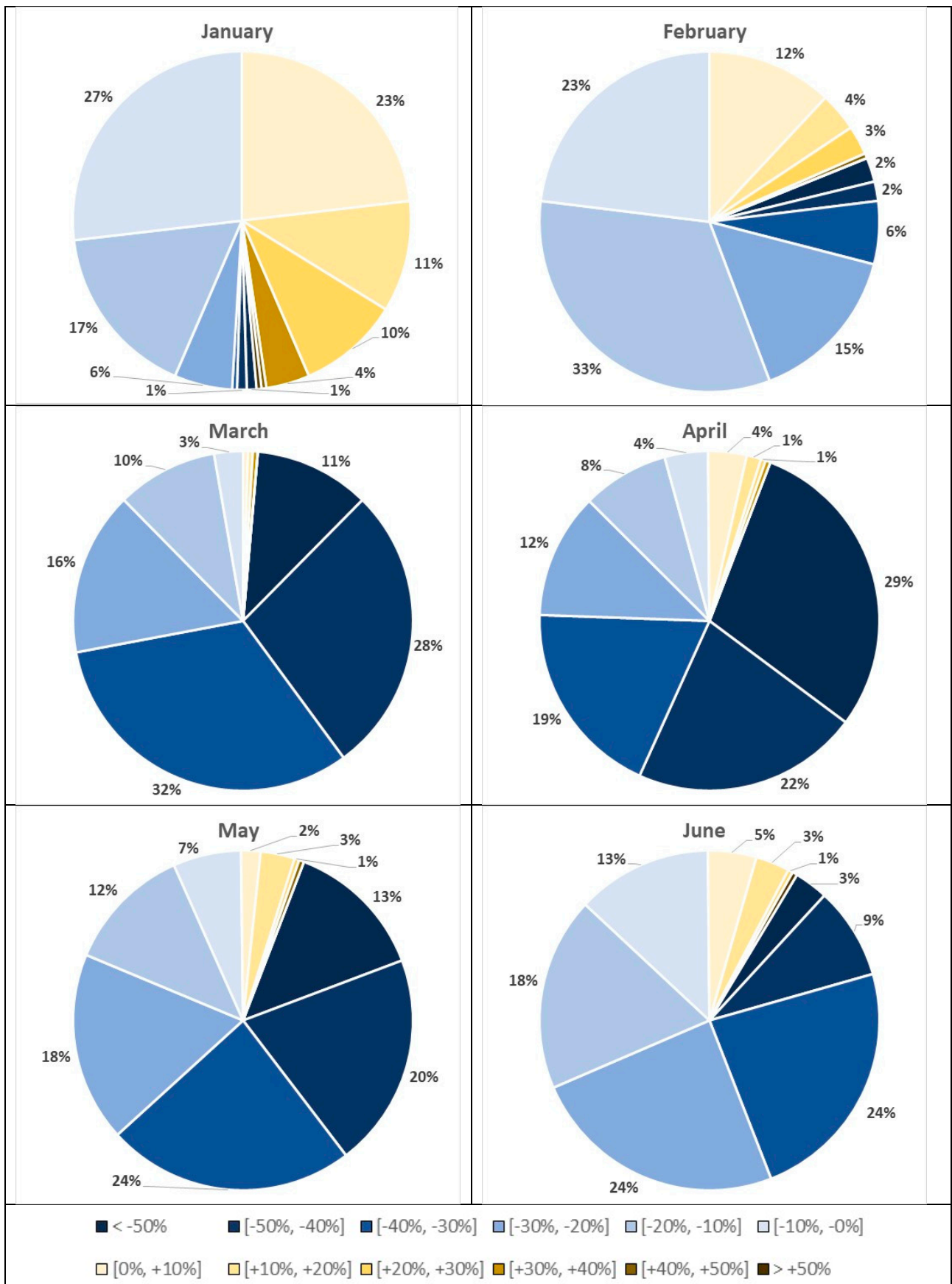


Figure S2. Pie-charts for the distribution of the relative variation of the monthly mean NO<sub>2</sub> concentrations between 2020 and 2014–2019.

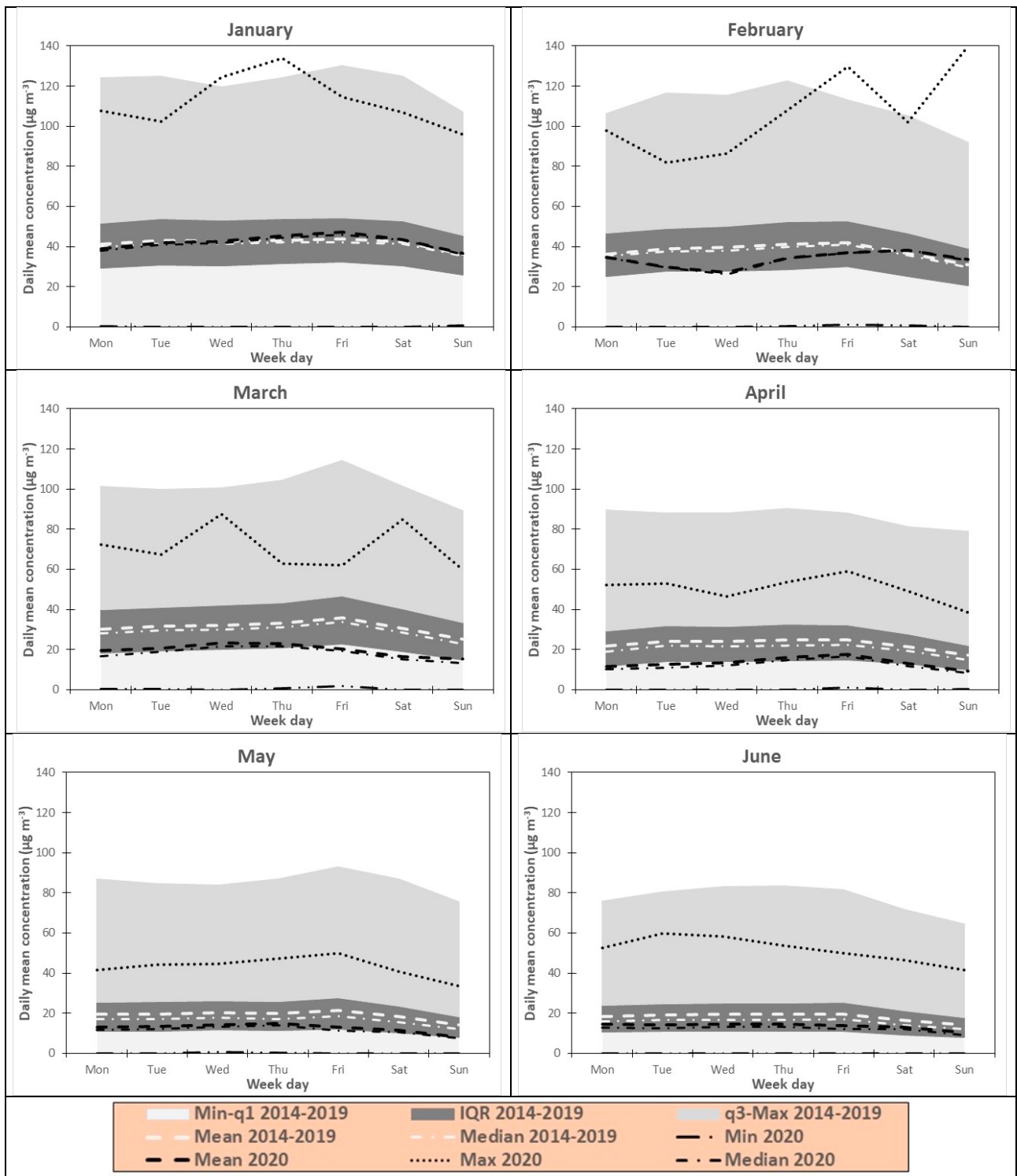


Figure S3. Weekly time patterns of NO<sub>2</sub> overall daily mean concentrations for 2020 versus the corresponding values for 2014–2019. Shaded areas show concentration ranges for 2014–2019.

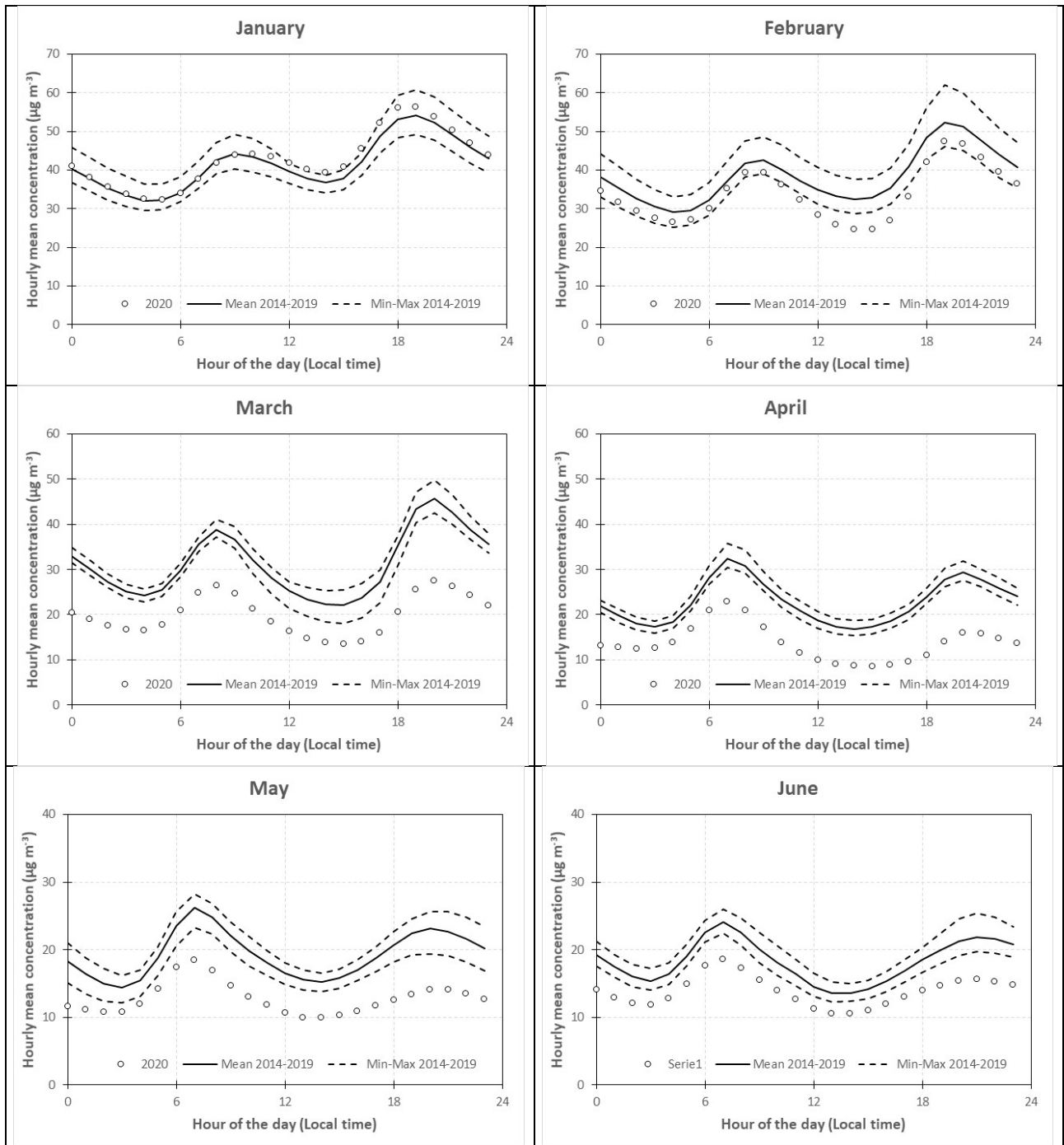


Figure S4. Daily time patterns of NO<sub>2</sub> overall hourly mean concentrations for 2020 versus the corresponding values and minimum-maximum range for 2014–2019.

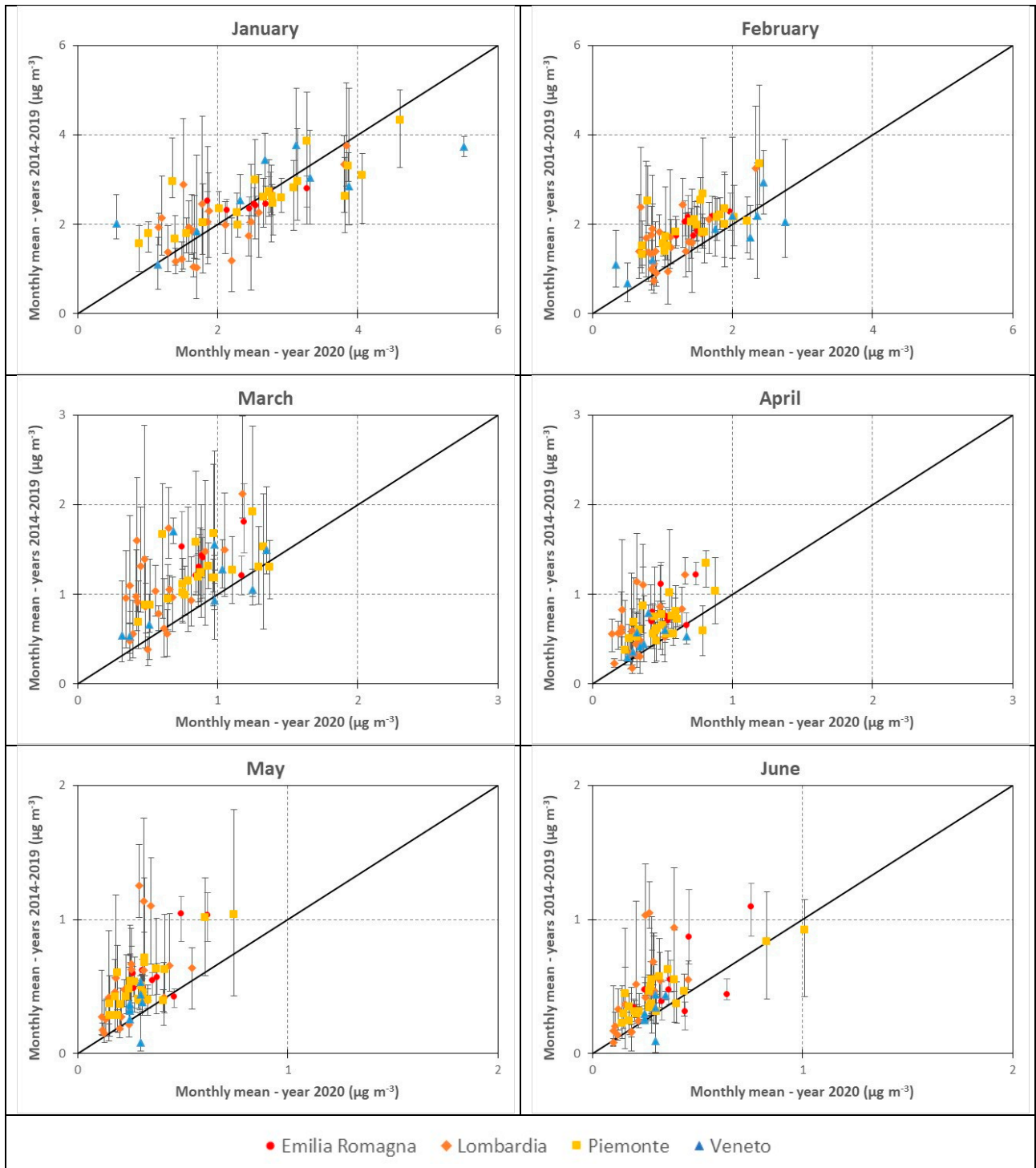


Figure S5. Scatterplots of the monthly mean benzene concentrations for 2020 versus the corresponding values for 2014–2019. Error bars show the minimum-maximum range for 2014–2019. Please note that concentration scales are different for every other two months.

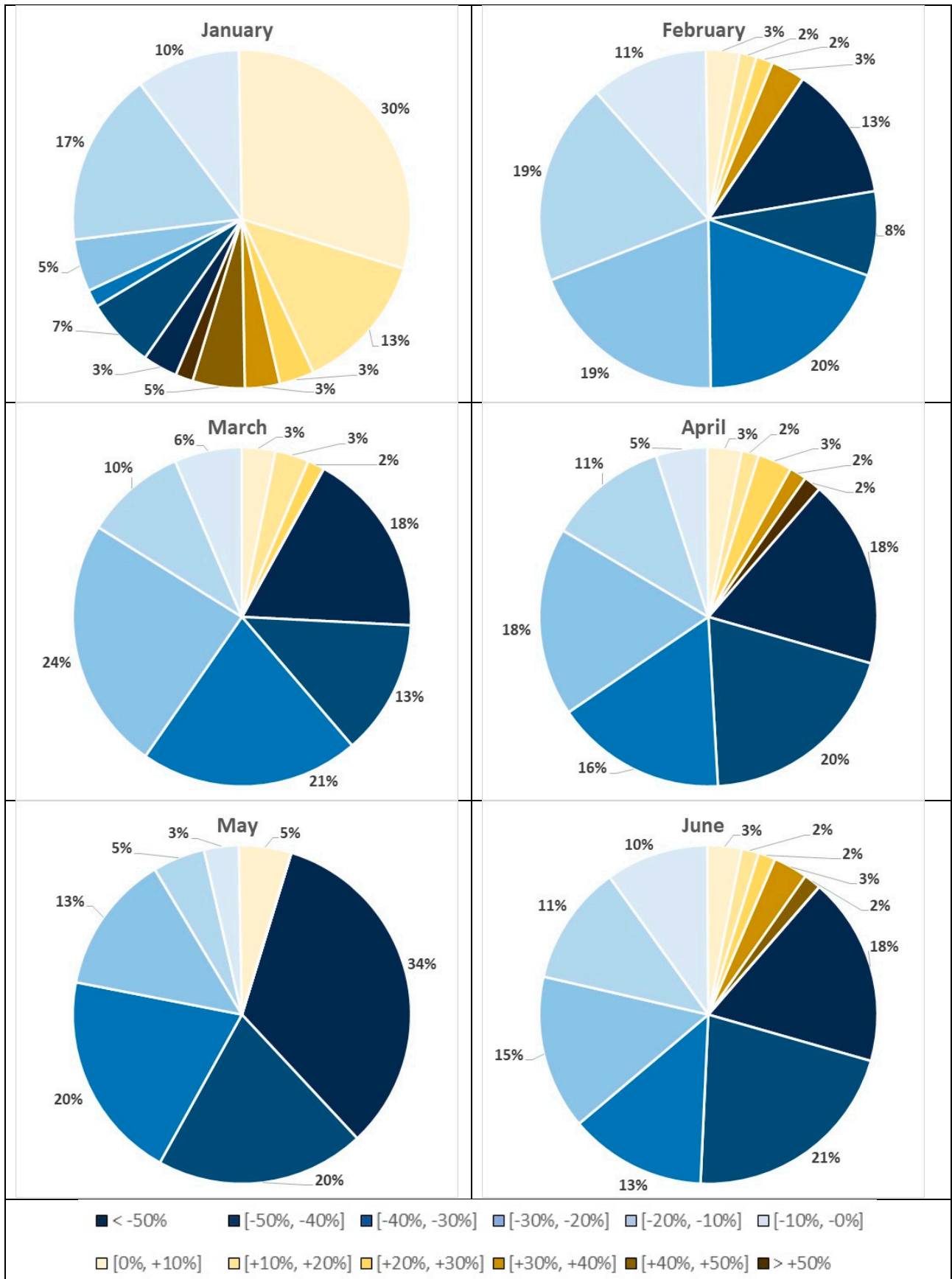


Figure S6. Pie-charts for the distribution of the relative variation of the monthly mean benzene concentrations between 2020 and 2014–2019.

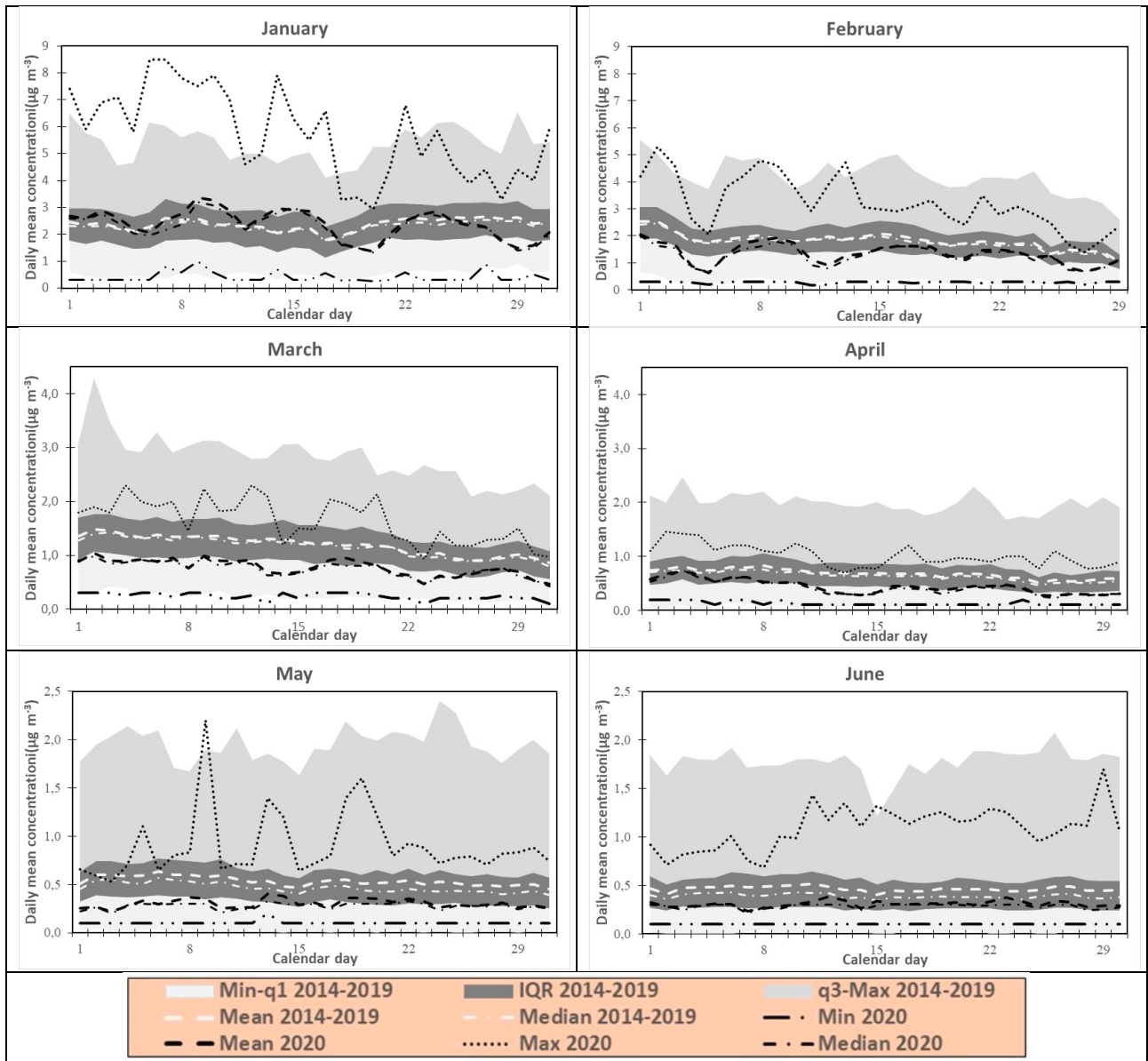


Figure S7. Time pattern of benzene overall daily mean concentrations for 2020 versus the corresponding values for 2014–2019. Shaded areas show concentration ranges for 2014–2019.

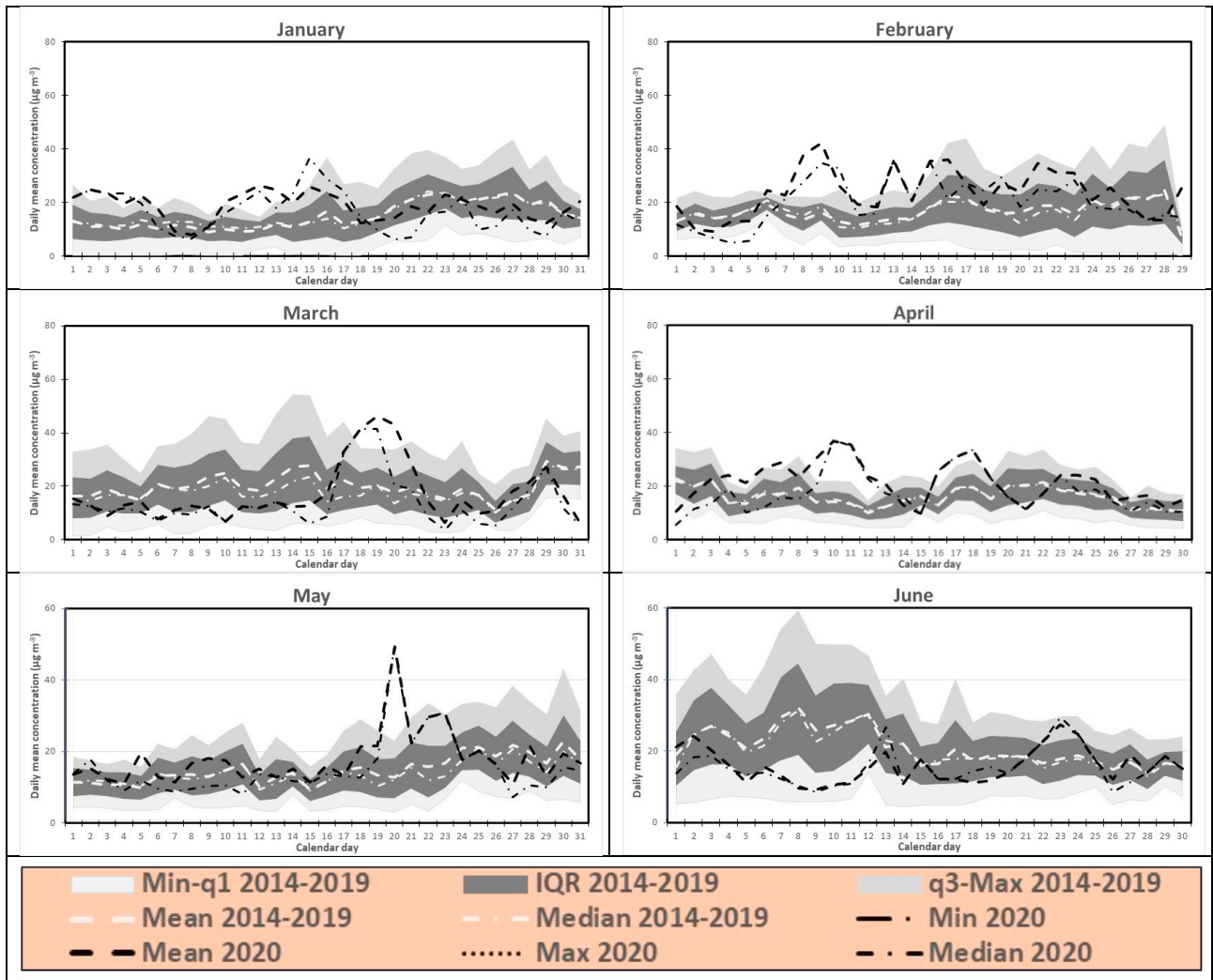


Figure S8. Time pattern of NH<sub>3</sub> overall daily mean concentrations for 2020 versus the corresponding values for 2014–2019. Shaded areas show concentration ranges for 2014–2019.