

Article

Spatial Analysis of GHG Balances and Climate Change Mitigation in Rural Areas: The Case of Emilia–Romagna Region

Katia Federico ^{1,*}, Alberto Bonora ¹, Gianmarco Di Giustino ^{1,2}, Matelda Reho ^{1,2} and Giulia Lucertini ^{1,2}

¹ Departments of Architecture and Arts, Planning and Climate Change Lab, Università Iuav di Venezia, S. Croce 1957, 30135 Venice, Italy

² EPIC—Feem@Iuav, Fondazione Eni Enrico Mattei, Palazzo delle Stelline, Corso Magenta 63, 20123 Milan, Italy

* Correspondence: kfederico@iuav.it

Abstract: This paper aims to analyse the issue of mitigation and the balance of greenhouse gases in the rural contexts of the Emilia–Romagna region (Italy) due to climate change. The approach is based on the experimentation of a methodology, populated by available spatial databases and refined with a series of technical meetings, where it was possible to weigh availability and alternative choices within the identified assessment model. The objective of the research is to create a regional GHG balance map, in order to classify the territory for this specific dynamic. The aim of this approach is supporting policy decisions related to the Common Agricultural Policy at a regional level.

Keywords: GHG balance; mitigation; rural context analysis; spatial analysis; climate change; climate adaptation; environment



Citation: Federico, K.; Bonora, A.; Di Giustino, G.; Reho, M.; Lucertini, G. Spatial Analysis of GHG Balances and Climate Change Mitigation in Rural Areas: The Case of Emilia–Romagna Region. *Atmosphere* **2022**, *13*, 2060. <https://doi.org/10.3390/atmos13122060>

Academic Editor: Kai-Jen Chuang

Received: 16 November 2022

Accepted: 7 December 2022

Published: 8 December 2022

Publisher's Note: MDPI stays neutral with regard to jurisdictional claims in published maps and institutional affiliations.



Copyright: © 2022 by the authors. Licensee MDPI, Basel, Switzerland. This article is an open access article distributed under the terms and conditions of the Creative Commons Attribution (CC BY) license (<https://creativecommons.org/licenses/by/4.0/>).

1. Introduction

Climate change and the consequent warming of average temperatures could, in the near future, have a negative impact both on food production and thus on food security itself [1], as well as on rural territories and landscapes [2]. Rising temperatures and extreme events directly impact crops through drought or too intense and concentrated rainfall, but also indirectly by increasing the presence of pathogens and pests, ultimately leading to a change in farm management. Furthermore, agriculture and farming practices, typical of rural areas, are recognised as very relevant factors in the emission of greenhouse gases (GHGs), and therefore, a direct cause of climate change itself. Considering this situation, it becomes fundamental that rural territories act on a double front: mitigation (a), through the reduction of the CO₂ produced and the consequent storage and sequestration connected to agricultural practices, and adaptation (b), related to the effects of climate change in relation to flooding [3].

The objective of the research is to create a regional map of the GHG budget in order to classify the rural context; thus, the output could be useful both for the relationship with spatial planning choices, and for place-based actions in agricultural policies that are adopted at a regional level in Italy.

Given the trend, which is now irreversible in the short term, it is necessary to implement tools able to preserve certain rural areas and the resulting landscapes. Rural territories through agricultural practices find themselves both a source and an affected subject of climate change.

The European Union has ambitious emission reduction targets to reach the Paris Agreement, with a reduction of at least 40% of GHGs by 2030. This target was further increased from 50% to 55% as part of the Green Deal programme [4], which aims for carbon neutrality by 2050. In this context, the area of land use, land-use change and forestry (LULUCF) was formally included in the Effort Sharing Regulation (ETS) for the period 2021–2030 [5], with a binding commitment that emissions from land use are fully offset by equivalent CO₂ removal (the so-called ‘no-debt’ rule). Therefore, it becomes very relevant

for territories to understand their potential to absorb and store CO₂ and this can be done through assessment and mapping, especially to support land use decisions and policies.

In this case, rural and agricultural territories are given priority, although cross-sectional studies on the subject are very limited and are generally based on land cover assessment [6,7]. For example, there are many agro-culture-specific studies; in fact, several pieces of research have suggested the preferential mitigation benefits of the albedo management of cropland through practices such as no-tillage or crop bio-geoengineering [8]. Others study and suggest the different uptake through the insertion of trees in cultivated land [9]; other work studies the uptake of orchards, olive groves, vineyards [10], or of wheat, sunflower, etc. [11]. Restoring degraded ecosystems and creating new ones is essential to improve the provision of ecosystem services at the landscape level [12], also providing healthy habitats for biodiversity and improving connectivity between natural areas in urban and rural landscapes across Europe [13]. In this sense, there is growing evidence that interventions, which address the way land is used, are both effective and necessary for climate mitigation and adaptation. The IPCC [14] has highlighted that all scenarios aimed at limiting climate change must rely on tools that act on changing land use, reducing sources of GHGs through ecosystem management and sustainable agricultural practices. All of these actions involving rural and agricultural land have been estimated to have the potential to provide about 30% of the CO₂ mitigation needed until 2030 to keep warming below 2 °C [15,16]. Climate mitigation, i.e., the reduction of climate-altering gases in the atmosphere, can be achieved either through actions to reduce emissions or through carbon sink sequestration, so as to stabilise their concentration in the atmosphere around values that will keep the temperature increase within 'sustainable' limits for societies. In the specific theme of climate change, the concept of "mitigation" can be defined as: a human intervention to reduce the sources or enhance the storage elements of GHGs, but also consider interventions to reduce the sources of other substances that have a direct or indirect effect on climate and climate change [17,18].

In this context, Nature-based Solutions (NbS) are sometimes considered, i.e., those measures that conserve, restore or enhance 'forests, wetlands, grasslands and agricultural land' in order to: reduce CO₂ emissions or remove CO₂ from the atmosphere, but also to limit the impacts of extreme events (water and heat) through specific measures such as reforestation, forest conservation and management, agro-forestry, cropland nutrient management, conservation agriculture, coastal wetland restoration and peatland conservation and restoration [19,20]. In other words, these measures have the capacity to support or enhance carbon storage and sequestration. Across Europe, numerous agricultural and livestock production systems use these types of solutions. The key principle on which they are based is ecologically based diversification, as it reduces vulnerability, while at the same time it can increase productivity. Examples of good practices are: integrated crop–livestock systems, soil organic matter management, mixed cropping, crop rotations, biological pest control and agroforestry. Climate disaster resilience is closely related to farms with higher levels of biodiversity [21]; one of the main limitations found in the application of these actions is the identification of the areas that need priority intervention [22], such as those ones identified as vulnerable or subject to risk. In this regard, there are numerous studies that attempt to analyse the territory by identifying and mapping vulnerabilities and risks due to climate change [23,24]. However, the experiments have almost all been carried out in urban contexts where permeable and non-permeable surfaces are identified, and where the risk is given by the presence of man and his infrastructures [25]. On the other hand, the cases of assessments and mapping related to rural areas, agricultural areas and their landscape are very limited. The scientific literature in this sense is mainly focused on specific studies about agricultural crops, suggesting solutions and tools aimed not so much at land management and planning but rather at agronomic scale [26,27]. For this reason, a study like this, based on specific research funded by the Emilia–Romagna region on rural territories, represents a new approach to climate issues related to agriculture on a territorial

scale. The research developed was built on the already existing data and information of the Emilia–Romagna region, including the output of previous projects.

2. Materials and Methods

About the European and global mitigation objectives, actions that conserve or improve carbon stocks have been much studied and implemented in recent years. Indeed, although the value of such actions has long been recognised within the climate science community, as successive IPCC reports and the Paris Agreement have shown, the growing momentum behind the need to achieve ‘zero’ emissions has brought a new urgency to exploring their potential, especially since the 2019 UN Climate Action Summit. In fact, while in the past a focus was on managing land use and land use change in the Global South, in order to mitigate climate change, nowadays a strong focus on agricultural soil as a carbon sink element is also necessary in more developed regions. A critical factor shaping carbon storage potential is the nature and organic component of the soil, particularly organic carbon, and the extent to which organic matter is added to the soil over time. Good soil management, through the use of agronomic practices geared towards carbon sequestration, such as the use of cover crops or zero tillage, is thought in the literature to bring long-term climate mitigation benefits, as soils can effectively sequester carbon, keeping it out of the atmosphere [28,29]. Currently, soil management in rural areas, due to current agricultural systems, is not proving effective in this regard; studies suggest that there is significant loss of soil organic carbon in several regions, especially in areas such as the Po Valley [30], so that European soils in agricultural areas are likely to be contributors to rather than absorbers of atmospheric carbon [31].

An estimated 86% of European agricultural areas have soil organic carbon losses caused by erosion due to the use of traditional, non-conservative tillage techniques [32–34], with greater losses in intensive systems than in those with lower levels of intensity [35]. Studies suggest that soil organic carbon loss varies within different farming systems, both due to the specificities of topology and climate, and according to land management practices [36].

The selected case study is the Emilia–Romagna region, in the centre-north of Italy, which covers an area of 22,510 km² and has a population of 4.4 million inhabitants [37]. The climate is temperate sub-continental, with hot and humid summers and cold and frosty winters, tending to sublittoral only along the coastal strip [38]. According to the Corine land cover 2020 dataset elaborated by the Emilia–Romagna region with Copernicus data [39], the area is covered for 35.75% by artificial surfaces, for 30.05% by agricultural areas, for 0.91% by forests and semi-natural areas and for 33.29% by water bodies without considering the lagoon (Figure 1).



Figure 1. Study area map.

In the last year, in the Italian context, there has been a strong process of urbanisation that has led the Emilia–Romagna region to suffer a strong loss of potential agricultural land (8.93%) [40]. Considering the limited experimentation of the assessment and mapping of mitigation related to climate change effects, for this specific study, an ad hoc methodology was developed and tested, based on the general methodology proposed by the IPCC [41].

2.1. Mapping Approach

The aim of this study is to test a methodological model for the assessment of GHG balance focused on rural and agricultural land, useful for mitigation studies/interventions. As can be deduced from the scheme in Figure 2, agriculture and, more generally, land use are both a source of CO₂ emission and absorption, so the assessment and related mapping of mitigation capacity will have to consider both positive and negative variables and determinants.

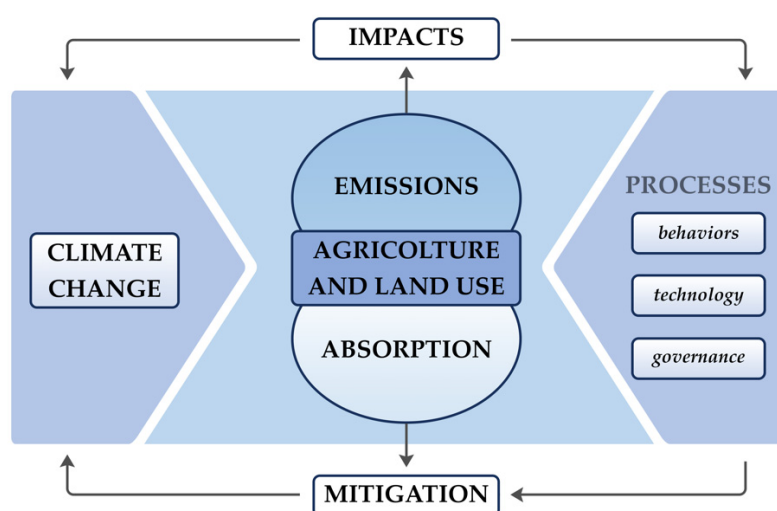


Figure 2. Methodology for assessing the GHG balance. From this figure it can be deduced that agriculture and more generally land use are sources of both CO₂ emission and absorption. Where there is absorption, mitigation occurs, while where there is emission, there is an impact that can be mitigated through specific processes.

The assessment of the climate–gas balance cannot be summarised through a number, but must be interpreted by interpolating different information references. The more spatial data available, the greater the considerations regarding the degree of mitigation capacity of the territory. Here too, mapping plays a central role in identifying the priority areas for intervention and the most efficient measures with respect to the analysed territory (where and how).

The geospatial assessment of mitigation was based on regional geodatabases from which layers were selected to meet the objectives of the paper. Following the mitigation Equation (3), the selected layers were divided into two main categories, as shown in Table 1: emissions and absorption capacity. In the first category, there is (i) INEMAR (INventario EMISSIONi ARia) emissions and in the second one there are: (ii) agricultural crops and potential carbon sequestration; (iii) agronomic practices; (iv) presence of hedgerows and rows; and (v) potential carbon sequestration (ES-CST).

Table 1. Information layers and related elements identified.

Main Factors	Layers	Description	Source *
Emissions	(i)	INEMAR emissions related to the agriculture and livestock sector	Emilia–Romagna Regional Geoportal
Absorption	(ii)	Agricultural crops and potential carbon sequestration	AGREA, Emilia–Romagna Region
	(iii)	Agronomic practices	Emilia–Romagna Regional Geoportal
	(iv)	Presence of hedges and rows	AGREA, Emilia–Romagna Region
	(v)	Potential carbon sequestration (ES-CST)	Emilia–Romagna Regional Geoportal

* Link to the data source available in the “Data Availability Statement” section.

The used approach regarding the construction of the cognitive framework and the mapping includes two phases, as illustrated in Figure 3:

1. Assessment and mapping of GHG emissions.
2. Assessment and mapping of GHG absorption.

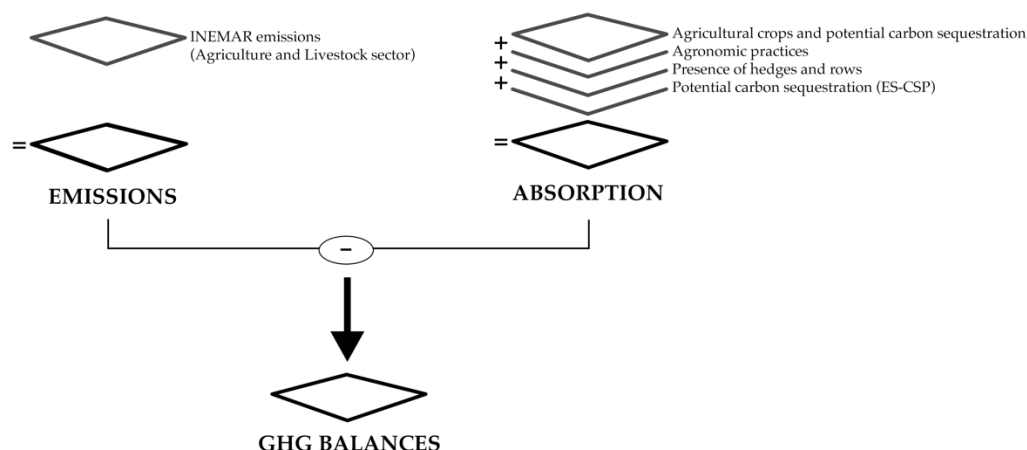


Figure 3. Schematic of the layers considered for the assessment and mapping of the GHG balance.

These steps were developed using different spatial criteria to quantify different properties.

2.2. Step 1: Assessment and Mapping of GHG Emissions

The evaluation of the Emilia–Romagna region’s rural territory emissions was based on a cognitive framework based on the layer: (i) INEMAR emissions. The regional inventory of atmospheric emissions is carried out through the INEMAR software, a tool developed and progressively updated in the framework of an interregional convention that currently involves, in addition to Emilia–Romagna, other Italian regions. The reference methodology implemented in INEMAR is the EMEP-CORINAIR methodology. Emission data are returned at municipal level. The classification of emissions according to this methodology involves the use of the SNAP (Selected Nomenclature for Sources of Air Pollution) coding and estimation according to it. The anthropogenic and natural activities that can give rise to emissions into the atmosphere are divided into 11 macro-sectors, including “Energy production and fuel processing”, “Industrial and Non-industrial combustion”, “Road Transport”, “Agriculture and Livestock”, “Waste treatment and disposal” and others. Based on this research activity, the study will focus on Agriculture and Livestock (macro-sector 10), which in turn is divided into 6 sectors (Table 2):

- Fertilizer Crops;
- Crops without fertilizers;
- Enteric fermentation;
- Wastewater management with reference to organic compounds;
- Wastewater management related to nitrogen compounds;
- Particulate emissions from livestock farms.

Table 2. INEMAR emissions by sector (expressed in tonnes/year).

SECTOR	NO _x	PTS	PM10	PM2.5	NH ₃	VOC	N ₂ O	CH ₄
1. Fertiliser Crops	405.1				10,183.4	25,666	1237.5	2715.6
2. Crops without fertilisers					1092.9	1099.2	873.9	
4. Enteric fermentation								50,531.2
5. Wastewater management with reference to organic compounds						58.4		19,508.9
9. Wastewater management related to nitrogen compounds					34,603.8		3679.8	
10. Particulate emissions from livestock farms		872.4	515.4	232.2				

This emissions inventory considers different air pollutants, whose data are expressed in tonnes/year, where:

- NO_x: nitrogen oxides—indirect greenhouse gas;
- PTS: total suspended dust;
- PM10: dust with a diameter of less than 10 mm;
- PM2.5: dust with a diameter of less than 2.5 mm;
- NH₃: ammonia;
- VOCs: volatile organic compounds—indirect greenhouse gases;
- N₂O: nitrous oxide—greenhouse gas;
- CH₄: methane—greenhouse gas.

The result is an information layer in which the territory is characterised by agricultural GHG emissions on a municipal scale. About the information layer, a normalisation of the values was followed, according to the Equation (1):

$$A = (X - X_{min}) / (X_{max} - X_{min}) \quad (1)$$

where:

- X = value considered;
- X_{min} = minimum value of the class of the specific layer;
- X_{max} = maximum value of the class of the specific layer.

2.3. Step 2: Assessment and Mapping of GHG Absorption

The second phase consists of the study of the territorial capacity to absorb climate-altering gases in terms of (ii) agricultural crops and their potential carbon sequestration; (iii) agronomic practices; (iv) presence of hedges and rows; (v) potential carbon sequestration (ES-CST).

The presence of (ii) agricultural crops plays an important role in the production and storage of CO₂ from and in the soil, an illustration of which is the fact that, on average,

ploughed land emits 2 to 3 times more GHG into the atmosphere than land left fallow [42]. The presence of crops, in fact, helps the mixing of soil and organic particles as it breaks up soil aggregates, thus favouring the production of CO₂. Although agricultural soils are also a significant source of carbon dioxide emissions, the choice of a certain type of crop rather than another can favour greater carbon dioxide capture [43]. The proposed methodology is based on the layers of crop graphs, to which each individual crop is assigned a scale of values ('high', 'medium', 'low') based on the biomass production by the crop under consideration, intended as a proxy for the carbon stored in life cycle. In addition, for each crop, a dichotomous value 'Yes' or 'No' was assigned based on the potential to vary its carbon storage in the soil according to tillage techniques (Appendix A). These values were assigned following (10) interviews conducted with local agronomists and agricultural scientists in the first phase of this research and from the study of agronomic manuals [44–46]. It may be misleading considering an intensive agricultural crop with high CO₂ uptake capacity, such as beet or maize, in the same way as a forest or fruit crop with much longer growing cycles and negligible soil movement [47].

In the analysis of element (iii) agronomic practices, those with minimal or no tillage, namely those that do not envisage the use of ploughing, were not taken into account and are associated with zero CO₂ emissions due to a different diffusivity of the gases in the soil, which are less free to move [48]. About this specific reason, a specific layer was considered in the methodology, derived from a layer provided by the Emilia–Romagna region with respect to the specific commitments of the second pillar. On this layer, a selection was made with respect to those soils that fell within the commitment '10.1.04—Conservation agriculture and increase in organic matter' of the RDP, which finances agricultural enterprises to meet the additional costs and lost revenues resulting from commitments arising from the introduction of conservation agriculture, as opposed to conventional agriculture. Although it is true that the use of these techniques depends first and foremost on the willingness of the farmer, who could also implement these actions on a voluntary basis, it was nevertheless decided to consider this layer as a significant proxy for the presence of these practices in the territory.

The layer (iv) related to the presence of hedges and rows certainly represents an informative reference level of information with respect to the mitigation capacity of an agricultural context. Such elements, in fact, are generally positioned in marginal portions of agricultural land, often not used for agricultural production, thus determining an additional net sequestration of CO₂ for these spaces.

Only the CST service, i.e., the (v) carbon sequestration potential, the information layer considered necessary to assess the potential capacity of soils to store carbon dioxide, was considered for the analysis with respect to exposure. The layer was produced for the entire lowland as part of the SOS4LIFE project [49]. Maps of the ecosystem services provided by soils for the lowland area have been published and are freely downloadable, containing the mapping of several ecosystem services including:

- BIO: Habitat for soil organisms;
- BUF: Protective capacity;
- CST: Carbon stock (potential);
- PRO: Biomass production;
- WAR: Deep water infiltration;
- WAS: Water reserve.

For each of the (4) individual information layers, a normalisation of the values was followed, according to Equation (1).

The maximum observed value is set equal to 1, and the value 0 indicates the relative minimum in the area considered, which is the entire Emilia–Romagna plain. A complete mapping of the ecosystem service for the entire Emilia–Romagna region is not available for this layer, since there are no values for the Apennines. Carrying out this operation in a GIS environment made it possible to obtain 4 layers, with the same scale of values

expressed from 0–1 and therefore comparable. This made it possible to aggregate the aspects examined and to obtain a general overview based on Equation (2):

$$B = (X_{ii} + X_{iii} + X_{iv} + X_v) / 4 \quad (2)$$

where:

- X_{ii} = agricultural crops and their potential carbon sequestration;
- X_{iii} = agronomic practices;
- X_{iv} = presence of hedges and rows;
- X_v = potential carbon sequestration (ES-CST).

3. Results

Based on the equations shown and the geospatial processing carried out in GIS, it is possible to assess the GHG balance. To do this, the two layers obtained (GHG emissions and GHG absorption, respectively) are further processed using Equation (3):

$$\text{GHG} = E - A \quad (3)$$

where:

- GHG = GHG balance;
- E = GHG emissions;
- A = GHG absorption.

To produce this map (Figure 4), a matrix was created in which the different layers were used and processed according to a mesh structure consisting of cells with a side of 1 km.

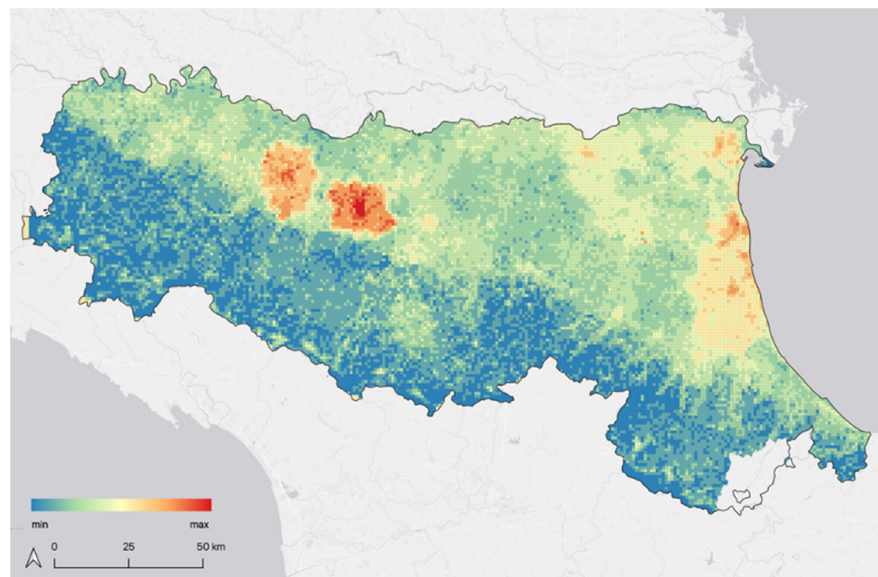


Figure 4. GHG balance map. In this image, as the spectral gradient changes towards red, areas with a positive GHG balance are identified.

In Figure 4, the main result on the spatial distribution of the GHG balance is displayed, from which it is possible to identify areas with a positive GHG balance and thus a higher presence of non-absorbed pollutants.

Approximately 2,212,064 ha of “emissive” area was mapped, of which the “Low” and “Medium-Low” GHG balance classes account for about 44%, while 25.37% fall into the “High” and “Medium-High” classes, as reported in Table 3. The middle class is the largest, reaching almost 31% of the total.

Table 3. Detail of the surfaces of the GHG balance classes.

Class of Vulnerability	Surface (ha)	Percentage of Total GHG Balance
Low	508,619.4	23.00%
Medium–low	459,984.4	20.80%
Medium	682,158.3	30.84%
Medium–high	391,985.2	17.72%
High	169,316.9	7.65%

In the Apennine zone, it is possible to observe a predominantly negative balance, which therefore presents a lower quantity of CO₂ equivalent emitted than that sequestered. This is by virtue of a context characterised by the presence of the Apennine ridge and passes, which favour a high level of potential sequestration on the ground, thanks also to the consistent presence of tree elements and in particular cow pastures, heaths, mountain grasslands in the higher altitudes and chestnut groves and mesophyll broadleaf forests in the lower zones. The GHG balance of the lowland area is considered neutral overall under an average emission scenario and an average sequestration capacity by virtue of a complex agrarian mosaic. In detail, two areas are characterised by a positive balance due to high emissive content, namely the area between Parma and Reggio Emilia and the area from Ravenna to the Comacchio Valleys. The considerable emissions related to the provinces of Parma and Reggio Emilia are linked to the large number of cattle farms (Figure 5) in the area for dairy production; in fact, these areas are characterised by the production of multiple Protected Designation of Origin (PDO) products (such as Parmigiano Reggiano and Prosciutto di Parma) and a Protected Geographical Indication (PGI) product. Parma, with 12 supply chains in the PDO and PGI food sector, is Italy's leading province in terms of economic value generated, with a turnover of EUR 1.1 billion, equal to 18.3% of the national IG food sector [50].

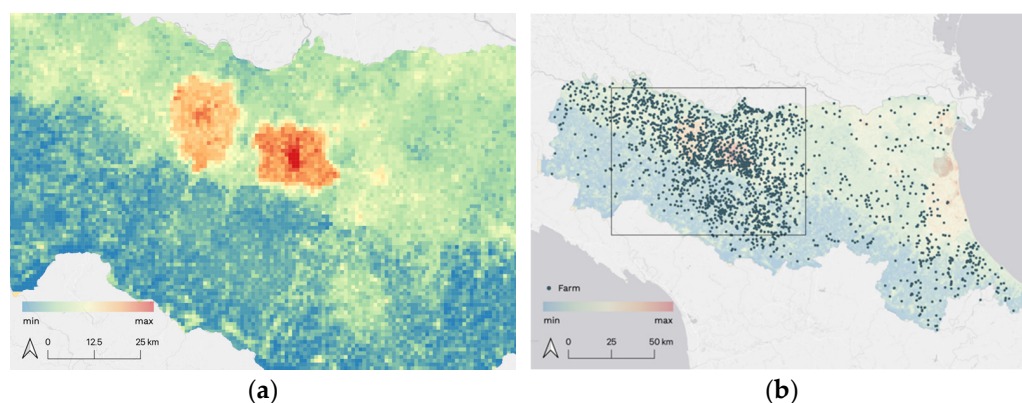


Figure 5. Presence of farms. In this image it is possible to see how the concentration of farms (b) settles in Parma and Reggio–Emilia (a), characterised by a positive balance due to the high number of dairy farms.

The area between Ravenna and the Comacchio Valleys, on the other hand, has a high balance due in part to the consistent production of industrial and horticultural crops (such as the Pera dell'Emilia–Romagna PGI and the Pesca e Nettare di Romagna PGI), and also due to the strong presence of aquaculture, which has a significant Life Cycle Assessment (LCA) impact on emissions. In the hillside area, from the point of view of climate-altering gases, there is a substantially neutral balance between the quantities of equivalent CO₂ emitted and sequestered. This fact depends on an average emissive framework of the rural territory and a discrete level of potential storage on the ground and a good presence of tree elements even in the productive agricultural context, characterised, furthermore, by crops with a high photosynthetic capacity. The areas of the high hills and mountains of Emilia–Romagna are characterised by a decidedly low emission profile with respect to the

balance of climate-altering gases, thanks to a high storage capacity due to the significant surface area covered by woods and a moderate emission of pollutants in the agricultural context; in fact, the autumn–winter arable crops represent a limited source of emissions.

4. Discussion

This study investigated and described a developed methodology for the spatial analysis of mitigation applied to the rural context of the Emilia–Romagna Region. The study shows a step-by-step guide on how to develop an approach to identify the GHG balance and the areas with the greatest presence of greenhouse gases that are not absorbed and/or sequestered. Although the use of a more detailed database should allow for the more in-depth knowledge of performance, the proposed methodology permits a relevant assessment at a regional scale, which is mainly useful for policy making and spatial planning decisions [51]. Moreover, the advantage of this approach is the ease with which it can be replicated in other spatial contexts, through the definition of local proxies. These must be based on available information layers, usually held by the local government, or which can be obtained from satellite data [3].

The analysis conducted, considering the specific limitations, can represent a good starting point for assessing mitigation. The limits identified can be briefly summarised as follows:

- with regard to the datasets used, a limited availability of some uniform layers for the whole regional area (e.g., the Potential Carbon Sequestration, which does not cover the whole area);
- the lack of dynamism of some layers with respect to the real evolution of the territory (e.g., the INEMAR emission data date back to 2017, although the updating of the regional inventory of atmospheric emissions should be carried out at least every three years);
- the techniques used with respect to agronomic practices depend on the willingness of the farmer, who could also implement these actions on a voluntary basis;
- the inevitable approximation of reality, resulting from the use of a limited set of layers.

Therefore, further exploration and practical implementation is necessary to obtain important knowledge and fill existing gaps. This type of study can influence both the choice of certain mitigation strategies and the areas of application and can be applied and adapted, in particular, in the definition of actions resulting from agricultural policy and landscape planning. Furthermore, the research can be deepened with the definition of a GHG risk classification in the study area, so that the methodology discussed in this paper can become a tool that can make important additions to landscape planning instruments such as the Regional Landscape Plan or Rural Development Plans.

Future implementations, which concern the definition of a risk classification, can guarantee greater detail, depth and knowledge of the territory.

5. Conclusions

This article highlights how the issue of mitigation and GHG balance can be investigated on a large regional scale in rural territory, and how this method represents a new approach to agriculture-related climate issues on a territorial scale.

This method can be replicated for the assessment and mapping of different factors, which persist in parallel, and could allow a synoptic vision of territories with respect to climate change. This paper provides a methodology capable of assessing mitigation in rural contexts, which could be extremely important in future Common Agricultural Policy, where giving priority in action to the most vulnerable territories—such as with the Nitrate Directive—is an important act of resource efficiency, in order to finance more result-based actions. In conclusion, it is clear that without an extensive planning and political process promoted by public administration and local commitment, it is not easy for private citizens and farmers to work synergistically to minimise negative effects and GHG emissions.

Author Contributions: Conceptualization, K.F., G.D.G., A.B. and G.L.; Data curation, K.F., A.B. and G.D.G.; Formal analysis, M.R. and G.L.; Investigation, K.F. and A.B.; Methodology, K.F., G.D.G. and G.L.; Resources, G.D.G. and A.B.; Software, K.F.; Supervision, M.R. and G.L.; Validation, G.D.G., M.R. and G.L.; Visualization, K.F.; Writing—original draft, K.F. and A.B.; Writing—review and editing, K.F., A.B. and G.D.G. All authors have read and agreed to the published version of the manuscript.

Funding: This research was funded by Regione Emilia Romagna and Università Iuav di Venezia, grant number E78D20000880007 and The APC was funded by Università Iuav di Venezia.

Institutional Review Board Statement: Not applicable.

Informed Consent Statement: Not applicable.

Data Availability Statement: Publicly available datasets were analysed in this study. These data can be found here: INEMAR (INventario EMissioni ARia) emissions: <https://datacatalog.regione.emilia-romagna.it/catalogCTA/dataset/inventario-regionale-emissioni-in-atmosfera-inemar> (accessed on 20 February 2022); agricultural crops and potential carbon sequestration: <https://agreagestione.regione.emilia-romagna.it/agrea-file/> (accessed on 19 February 2022); agronomic practices: <https://agricoltura.regione.emilia-romagna.it/produzioni-agroalimentari/temi/bio-agro-climambiente> (accessed on 3 March 2022); presence of hedgerows and rows: <https://agreagestione.regione.emilia-romagna.it/agrea-file/> (accessed on 23 February 2022); potential carbon sequestration (ES-CST): <https://ambiente.regione.emilia-romagna.it/it/geologia/suoli/suoli-pianificazione/servizi-ecosistemicidel-suolo> (accessed on 1 April 2022).

Acknowledgments: We are highly thankful for administrative and technical support (such as the materials used for the studies): Emilia-Romagna Region, in particular: Graziella Guaragno; Giovanni Pancaldi, Forestry Standards; Nicola Laruccia, Zoning and Crop Graphic Plans; Agriculture Service; Paola Tarocco, Soil Service; Patrizia Bianconi, Sustainable Development; Sofia Cej, Agritourism; Paola Siragusa, Agricultural Motor Users; Giampaolo Sarno, Effluents and Livestock Waste; Eng. Patrizia Ercoli, Plans and Programs Hydraulic Sector. ARPAE Emilia–Romagna, in particular: C. Cacciamani and R.Tomozeiu; Iuav University of Venice: Gianfranco Pozzer.

Conflicts of Interest: No conflict of interest is declared by the authors.

Appendix A. CO₂ Sequestered for Type of Crop

Type of Crop	CO ₂ Sequestered	Dependent on Soil Working Techniques
ACHILLEA	Low	Yes
GARLIC	Low	Yes
AGRETTO	Low	Yes
ALTEA	Low	Yes
AMARANT	High	Yes
ANETO	Low	Yes
COMMON ANISE	Low	Yes
ARACHID	Low	Yes
OAT	Medium	Yes
BARBABIETOLA	High	Yes
BASIL	Low	Yes
WHITSPIN	High	Yes
BIETOLA	Medium	Yes
BORAGE	Medium	Yes
HEMP	High	Yes
MISCANTHUS SINENSIS	High	Yes
SUGAR CANE	High	Yes
CARROT	Low	Yes
CAULIFLOWER	Low	Yes
CABBAGE RAPA	Low	Yes
CHICKPEA	Low	Yes
CETRIOL	Low	Yes

Type of Crop	CO ₂ Sequestered	Dependent on Soil Working Techniques
CHENOPODIUM QUINOA	Low	Yes
CHICKBERRY	Low	Yes
CYCLAMIN	Low	Yes
CHICORY	Low	Yes
COLZA	Medium	Yes
CORIANDOL	Medium	Yes
CRESCION	Low	Yes
CUMIN	Low	Yes
CHIVE	Low	Yes
MEDIUM HERB	High	Yes
HERBS	High	Yes
FACELIA	High	Yes
BEANS	Medium	Yes
FARRO	Medium	Yes
STRAWBERRY	Low	Yes
NUTS	High	Yes
IRIS	Low	Yes
SUNFLOWER	High	Yes
WHEAT DURUM/TENERO	Medium	Yes
SANDWHEAT	Medium	Yes
GRANTURCO	High	Yes
HYPERICO	Medium	Yes
HYSSOP	Medium	Yes
RASPBERRY	Medium	Yes
LAVENDER	Low	Yes
GRAIN LEGUMES	Medium	Yes
LENTILS	Medium	Yes
LINEN	Medium	Yes
LOIETTO	High	Yes
LUPINELLA	Medium	Yes
ALMOND	High	Yes
MINT	Low	Yes
PEPPERMINT	Low	Yes
LEMON	Medium	Yes
BLUEBERRY	High	Yes
NITROGEN-FIXING MIX	Medium	Yes
WALNUT	High	Yes
OLIVE	High	Yes
BARLEY	Medium	Yes
PANICO	Medium	Yes
PEAK	Medium	Yes
RAFFIN	High	Yes
RAVIZZONE	Medium	Yes
RICE	Medium	Yes
CELERY	Low	Yes
SEGALA	Medium	Yes
SEEDSAL	Medium	Yes
SENAPE	Medium	Yes
SOYA	Medium	Yes
SORB	Medium	Yes
SORGUM	Medium	Yes
TOPINAMBUR	Medium	Yes

Type of Crop	CO ₂ Sequestered	Dependent on Soil Working Techniques
TRITICAL	Medium	Yes
TRITORDEUM	Medium	Yes
VECCE	Medium	Yes
VERBENA OFFICINALE	Low	Yes
VINE	High	Yes
SAFFRON	Low	Yes
PUMPKIN	Medium	Yes
ZUCCHINO	Low	Yes

Source: interviews conducted with local agronomists and farmers and agronomic manuals.

References

- Lucertini, G.; Di Giustino, G. Urban and Peri-Urban Agriculture as a Tool for Food Security and Climate Change Mitigation and Adaptation: The Case of Mestre. *Sustainability* **2021**, *13*, 5999. [\[CrossRef\]](#)
- Tripathi, A.; Tripathi, D.K.; Chauhan, D.K.; Kumar, N.; Singh, G.S. Paradigms of climate change impacts on some major food sources of the world: A review on current knowledge and future prospects. *Agric. Ecosyst. Environ.* **2016**, *216*, 356–373. [\[CrossRef\]](#)
- Di Giustino, G.; Bonora, A.; Federico, K.; Reho, M.; Lucertini, G. Spatial Analysis of the Vulnerability to Flooding in the Rural Context: The Case of the Emilia Romagna Region. *Atmosphere* **2022**, *13*, 1181. [\[CrossRef\]](#)
- European Union. *Delivering the European Green Deal: The Decisive Decade*; European Commission: Brussels, Belgium, 2021. [\[CrossRef\]](#)
- Erbach, G. *Effort Sharing Regulation, 2021–2030: Limiting Member States' Carbon Emissions*; EPRS: European Parliamentary Research Service: Bruxelles, Belgium, 2018.
- Lugato, E.; Cescatti, A.; Jones, A.; Ceccherini, G.; Duveiller, G. Maximising climate mitigation potential by carbon and radiative agricultural land management with cover crops. *Environ. Res. Lett.* **2020**, *15*, 094075. [\[CrossRef\]](#)
- Pahar, S.P.P.; Nursaputra, M. Mapping of carbon absorption based on land use in upstream of Jeneberang watershed. *IOP Conf. Ser. Earth Environ. Sci.* **2020**, *575*, 012237. [\[CrossRef\]](#)
- Seneviratne, S.I.; Phipps, S.J.; Pitman, A.J.; Hirsch, A.L.; Davin, E.L.; Donat, M.G.; Kravitz, B. Land radiative management as contributor to regional-scale climate adaptation and mitigation. *Nat. Geosci.* **2018**, *11*, 88–96. [\[CrossRef\]](#)
- Chapman, M.; Walker, W.S.; Cook-Patton, S.C.; Ellis, P.W.; Farina, M.; Griscom, B.W.; Baccini, A. Large climate mitigation potential from adding trees to agricultural lands. *Glob. Chang. Biol.* **2020**, *26*, 4357–4365. [\[CrossRef\]](#)
- Costantini Scala, A.; Asdrubali, F.; Presciutti, A. *Rete Rurale Nazionale. Sfide ed Opportunità dello Sviluppo Rurale per la Mitigazione e L'adattamento ai Cambiamenti Climatici. Piano Strategico dello Sviluppo Rurale. L'agricoltura a Beneficio di Tutti*; Ministero delle Politiche Agricole Alimentari e Forestali: Rome, Italy, 2012; ISBN 9788896095119.
- Gonzalez-Sanchez, E.J.; Veroz-Gonzalez, O.; Conway, G.; Moreno-Garcia, M.; Kassam, A.; Mkomwa, S.; Carbonell-Bojollo, R. Meta-analysis on carbon sequestration through Conservation Agriculture in Africa. *Soil Tillage Res.* **2019**, *190*, 22–30. [\[CrossRef\]](#)
- Marino, D.; Palmieri, M.; Marucci, A.; Pili, S. Long-term land cover changes and ecosystem services variation: Have the anthropogenic transformations degraded human well-being in Italy? *Ital. Rev. Agric. Econ.* **2022**, *77*, 7–23. [\[CrossRef\]](#)
- Naumann, S.; Davis, M. *Biodiversity and Nature-Based Solutions: Analysis of EU Funded Projects*; Independent Expert Report; Publications Office of the European Union: Luxembourg, 2020. [\[CrossRef\]](#)
- Stocker, T.F.; Qin, D.; Plattner, G.-K.; Tignor, M.; Allen, S.K.; Boschung, J.; Nauels, A.; Xia, Y.; Bex, V.; Midgley, P.M.; et al. *Climate Change 2013: The Physical Science Basis. Contribution of Working Group I to the Fifth Assessment Report of the Intergovernmental Panel on Climate Change*; Cambridge University Press: Cambridge, UK, 2013. [\[CrossRef\]](#)
- Seddon, N.; Chausson, A.; Berry, P.; Girardin, C.A.; Smith, A.; Turner, B. Understanding the value and limits of nature-based solutions to climate change and other global challenges. *Philos. Trans. R. Soc. B* **2020**, *375*, 20190120. [\[CrossRef\]](#)
- Seddon, N.; Daniels, E.; Davis, R.; Chausson, A.; Harris, R.; Hou-Jones, X.; Wicander, S. Global recognition of the importance of nature-based solutions to the impacts of climate change. *Glob. Sustain.* **2020**, *3*, E15. [\[CrossRef\]](#)
- Yating, Z.; Bilal, M.A. Chapter 2—Temperature extremes in a changing climate. In *Climate Change and Extreme Events*; Elsevier: Amsterdam, The Netherlands, 2021; pp. 9–23. [\[CrossRef\]](#)
- Allwood, J.M.; Bosetti, V.; Dubash, N.K.; Gómez-Echeverri, L.; Stechow, C.V.; D'Agosto, M.; Zwickel, T. Glossary, Acronyms and Chemical Symbols [Annex I]. In *Climate Change 2014: Mitigation of Climate Change*; Cambridge University Press: Cambridge, UK, 2014; pp. 1247–1279.
- Miralles-Wilhelm, F. *Nature-Based Solutions in Agriculture: Sustainable Management and Conservation of Land, Water and Biodiversity*; Food and Agriculture Organization: Rome, Italy, 2021. [\[CrossRef\]](#)
- Bellamy, R.; Osaka, S. Unnatural climate solutions? *Nat. Clim. Chang.* **2020**, *10*, 98–99. [\[CrossRef\]](#)
- Altieri, M.A.; Nicholls, C.I.; Henao, A.; Lana, A.M. Agroecology and the design of climate change-resilient farming systems. *Agron. Sustain. Dev.* **2015**, *35*, 869–890. [\[CrossRef\]](#)

22. Litt, G.; Ferraioli, E.; Magni, F.; Lucertini, G.; Musco, F. Inter-Municipal Methodology for Climate Transition Strategies: The First Case in Italy. *Sustainability* **2022**, *14*, 2529. [CrossRef]
23. Klein, R.J. Identifying countries that are particularly vulnerable to the adverse effects of climate change: An academic or political challenge. *Carbon Clim. Law Rev.* **2009**, *3*, 284. [CrossRef]
24. Muccione, V.; Allen, S.K.; Huggel, C.; Birkmann, J. Differentiating regions for adaptation financing: The role of global vulnerability and risk distributions. *Wiley Interdiscip. Rev. Clim. Chang.* **2017**, *8*, e447. [CrossRef]
25. Maragno, D.; Dall'omo, C.F.; Pozzer, G.; Musco, F. Multi-Risk Climate Mapping for the Adaptation of the Venice Metro-politan Area. *Sustainability* **2021**, *13*, 1334. [CrossRef]
26. Bonari, E.; Cecon, P. *Verso un Approccio Integrato allo Studio dei Sistemi Culturali*; FrancoAngeli: Milan, Italy, 2002; Volume 202, ISBN 9788846440709.
27. Avagnina, S.; Del Vecchio, A.; Gaudino, S.; Goia, I.; Sacco, D.; Grignani, C.; Bourlot, G. *Programma di Sviluppo Rurale. Monitoraggio Intensivo Mediante una Rete di Casi Studio Sulle Tecniche Agronomiche e sui Terreni Agrari*; Progetto MITA NET: Milan, Italy, 2012.
28. Soane, B.D.; Ball, B.C.; Arvidsson, J.; Basch, G.; Moreno, F.; Roger-Estrade, J. No-till in northern, western and south-western Europe: A review of problems and opportunities for crop production and the environment. *Soil Tillage Res.* **2012**, *118*, 66–87. [CrossRef]
29. Tellatin, S.; Myers, R.L. Cover crop impacts on US cropland carbon sequestration. *J. Soil Water Conserv. Sept.* **2018**, *73*, 117A–121A. [CrossRef]
30. Jones, R.J.A.; Hiederer, R.; Rusco, E.; Loveland, P.J.; Montanarella, L. *The Map of Organic Carbon in Topsoils in Europe, Version 1.2, September 2003: Explanation of Special Publication Ispra 2004 No. 72 (S.P.I.04.72)*; European Soil Bureau Research Report, No.17, EUR 21209 EN, 26pp. and 1 Map in ISO B1 Format; Office for Official Publications of the European Communities: Luxembourg, 2004.
31. Lugato, E.; Paustian, K.; Panagos, P.; Jones, A.; Borrelli, P. Quantifying the erosion effect on current carbon budget of European agricultural soils at high spatial resolution. *Glob. Chang. Biol.* **2016**, *22*, 1976–1984. [CrossRef]
32. Renzi, G. *Carbonio Organico e Uso del Suolo*; Università Degli Studi Della Tuscia: Viterbo, Italy, 2016. Available online: <http://hdl.handle.net/2067/3018> (accessed on 10 January 2022).
33. Conselvan, G.B. *Suoli Sottoposti a Tecniche di Agricoltura Conservativa: Studio dei Parametri Chimico-Biologici*; Università degli Studi di Padova, Dipartimento Agronomia Animali Alimenti Risorse Naturali e Ambiente: Padua, Italy, 2013.
34. Fracasso, R. L'applicazione dell'agricoltura conservativa per garantire la funzionalità del suolo quale bene pubblico nella riforma della Politica Agricola Comunitaria (PAC). *Aestimium* **2015**, *43*, 165–176. [CrossRef]
35. Pérez-Soba, M.; Paracchini, M.L.; Barredo, J.; Caudullo, G.; Cormont, A.; van Doorn, A.; van Eupen, M.; Guiomar, N.; Hendriks, K.; Miguel Ayala, L.; et al. *Deliverable 2.2: Database and Classification System of Different Types of PG/ESS in Relation to Farming/Forestry Systems*; PEGASUS: Public Ecosystem Goods and Services from Land Management—Unlocking the Synergies; European Commission: Luxembourg, 2016.
36. Fussler, H.M. *Climate Change, Impacts and Vulnerability in Europe 2012 (EEA Report No 12/2012)-Version of 20.06. 2013*; European Environment Agency (EEA): Copenhagen, Denmark, 2012.
37. Regione Emilia-Romagna Statistica. Available online: <https://statistica.regione.emilia-romagna.it/> (accessed on 16 April 2022).
38. Centro Meteo. Il Clima Della Regione Emilia-Romagna. Available online: <http://www.centrometeo.com/articoli-reportage-approfondimenti/climatologia> (accessed on 11 January 2022).
39. Regione Emilia-Romagna Geoportale. Coperture Vettoriali Uso Del Suolo Di Dettaglio—Edizione 2020. Available online: <https://geoportale.regione.emilia-romagna.it/catalogo/dati-cartografici/pianificazione-e-catasto/uso-del-suolo/layer-9> (accessed on 16 June 2022).
40. Sistema Nazionale Per La Protezione dell'Ambiente. Consumo Di Suolo, Dinamiche Territoriali E Servizi Ecosistemici. Edizione 2021. Available online: <https://www.snpambiente.it/2021/07/14/consumo-di-suolo-dinamiche-territoriali-e-servizi-ecosistemici-edizione-2021/> (accessed on 20 February 2022).
41. IPCC. *Climate Change 2014 Impacts, Adaptation and Vulnerability: Part A: Global and Sectoral Aspects: Working Group II Contribution to the Fifth Assessment Report of the Intergovernmental Panel on Climate Change*; Cambridge University Press: Cambridge, UK, 2014.
42. Passioura, J.B. Soil conditions and plant growth. *Plant Cell Environ.* **2002**, *25*, 311–318. [CrossRef] [PubMed]
43. Rastogi, M.; Shalini, S.; Pathak, H. Emission of carbon dioxide from soil. *Curr. Sci.* **2002**, *82*, 510–516. Available online: <http://www.jstor.org/stable/24105957> (accessed on 13 April 2022).
44. Scaramuzzi, F.; Alpi, A.; Crescimanno, F.G.; Sansavini, S. Arboricoltura generale. *Arboric. Gen.* **2013**, *10*, 191–210. [CrossRef]
45. Tassinari, G.; Calzecchi-Onesti, A. *Manuale Dell'agronomo, Il Nuovo Tassinari*, 6th ed.; Reda: Dammam, Saudi Arabia, 2020.
46. Cecon, P.; Fagnano, M.; Grignani, C.; Monti, M.; Orlandini, S. *Agronomia*; Edises: Napoli, Italy, 2017.
47. Zomer, R.J.; Bossio, D.A.; Sommer, R.; Verchot, L.V. Global Sequestration Potential of Increased Organic Carbon in Cropland Soils. *Sci. Rep.* **2021**, *11*, 18720. [CrossRef]
48. Pavelka, M.; Acosta, M.; Kiese, R.; Altimir, N.; Brümmer, C.; Crill, P.; Kutsch, W. Standardisation of chamber technique for CO₂, N₂O and CH₄ fluxes measurements from terrestrial ecosystems. *Int. Agrophysics* **2018**, *32*, 569–587. [CrossRef]
49. S.O.S. 4 LIFE. Save Our Soil for LIFE. Available online: <https://www.sos4life.it/progetto/> (accessed on 3 January 2022).

-
50. Ismea, Fondazione Qualivita. XIV Rapporto Annuale sul Settore Food&Wine Italiano dei Prodotti a Qualità Certificata DOP IGP STG. Ministero delle Politiche Agricole, AICIG, Federdoc e Consorzi di Tutela. 2016. Available online: <https://www.qualivita.it/news/emilia-romagna-il-food-dop-igp-vale-26-miliardi-2/> (accessed on 6 April 2022).
 51. Lucertini, G.; Di Giustino, G.; dall’Omo, C.F.; Musco, F. An innovative climate adaptation planning process: iDEAL project. *J. Environ. Manag.* **2022**, *317*, 115408. [[CrossRef](#)]