

Supplementary Materials

Xiurui Guo ^{1,*}, Yao Liu¹, Dongsheng Chen¹, Xiaoqian Gong¹

Table S1. Vehicle categories in this study corresponding with those in COPERT.

Categories of Chinese vehicles		Vehicle categories by COPERT	
The Statistical Yearbook	This Study	Category	Segment
Mini-size passenger cars	Light-duty vehicles	Passenger cars	Small
Small-size passenger cars			
Medium Buses	Heavy-duty vehicles	Buses	Urban Buses Midi ≤ 15 t
Large Buses			Coaches Standard ≤ 18 t
Mini-size trucks	Light-duty trucks	Light Commercial Vehicles	N1-II
Small-size trucks			
Medium trucks	Heavy-duty trucks	Heavy Duty Trucks	Rigid 7.5-12t
Large trucks			Rigid 14-32t

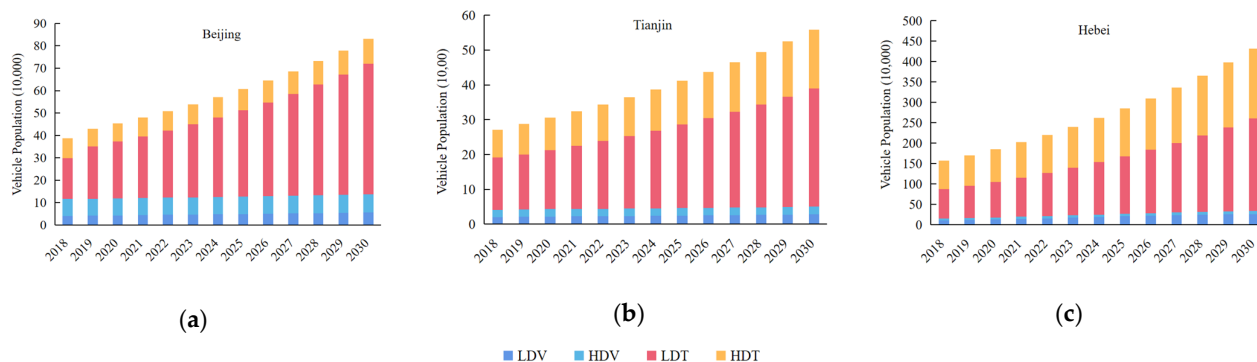


Figure S1. The projected population of different types of diesel vehicles in the BTH region.

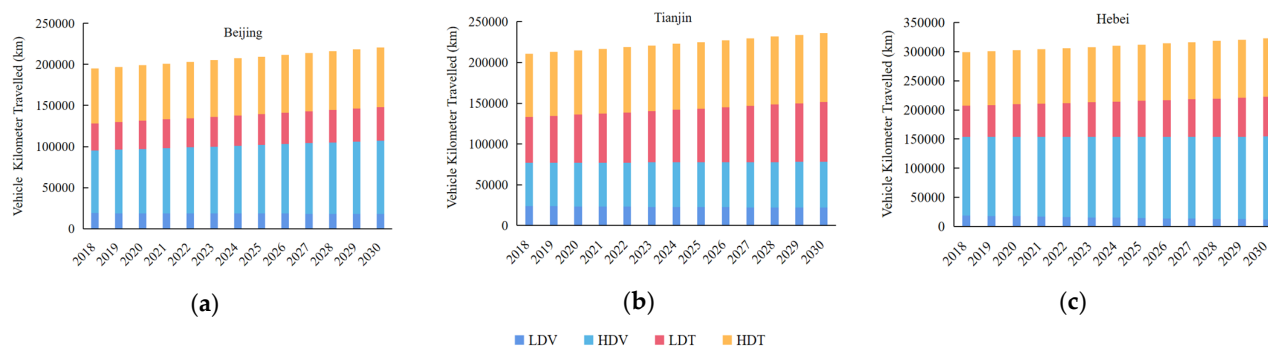


Figure S2. The projected VKT of different types of diesel vehicles in the BTH region.

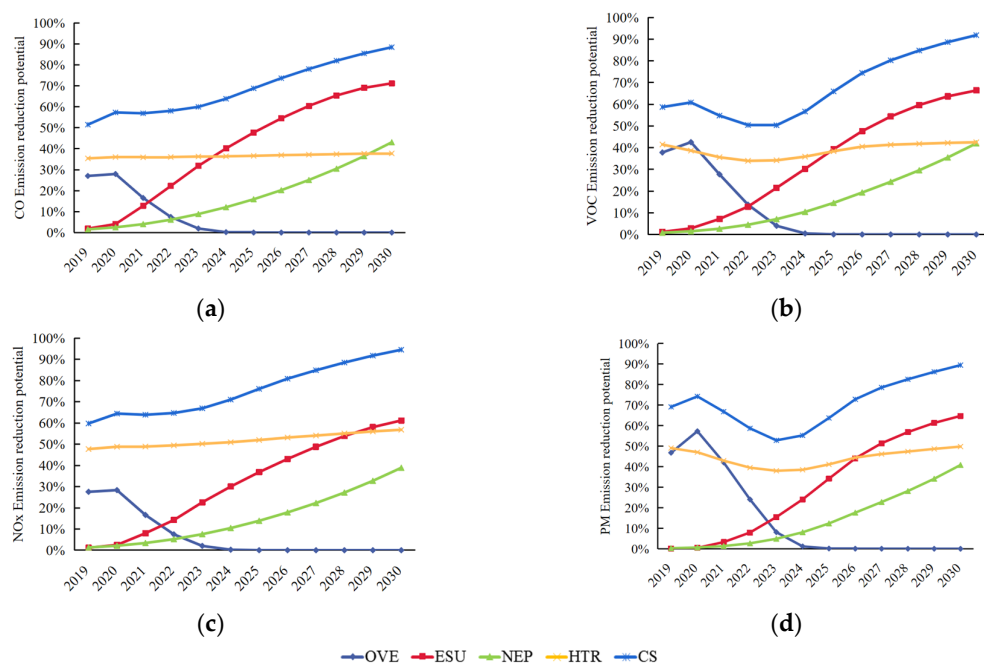


Figure S3. Prediction of pollutant emission-reduction potential from diesel vehicles under different policy scenarios in Tianjin.

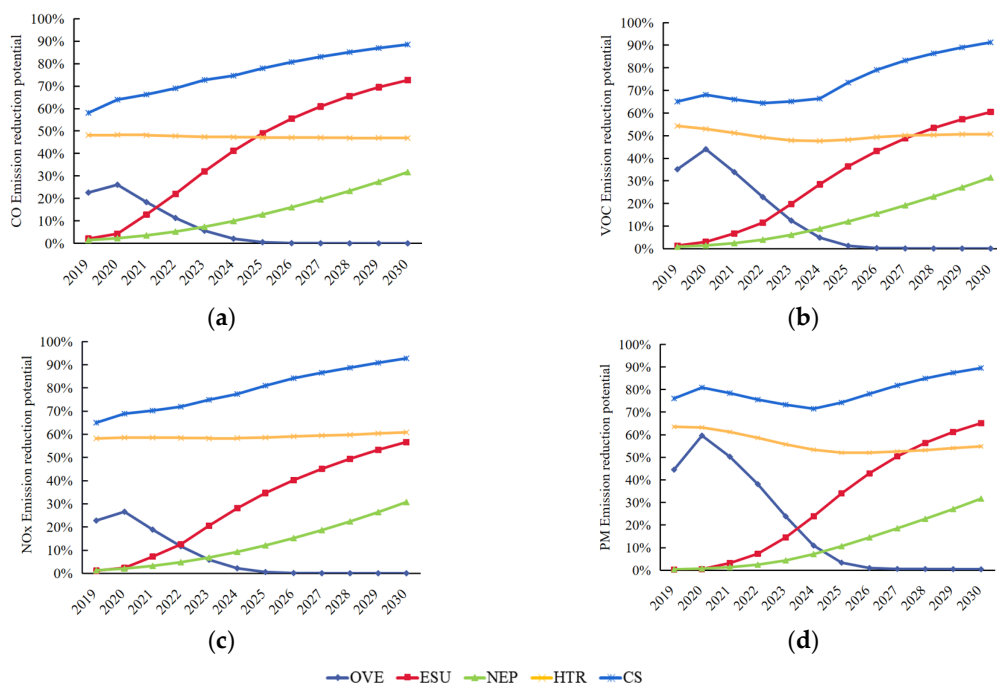


Figure S4. Prediction of pollutant emission-reduction potential from diesel vehicles under different policy scenarios in Hebei.

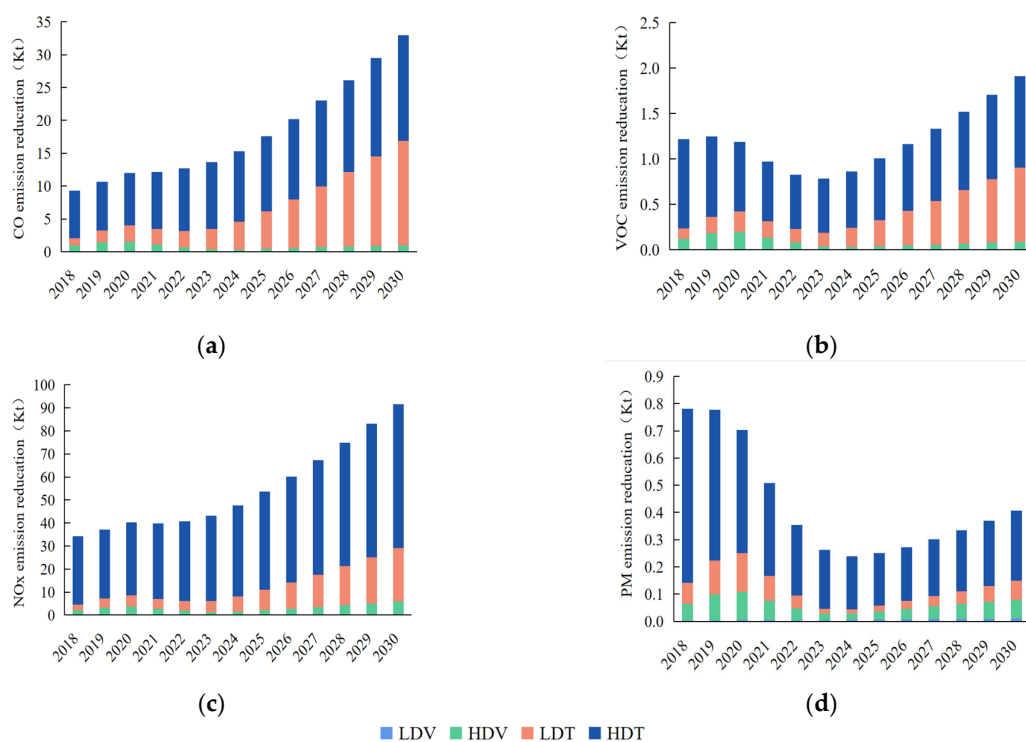


Figure S5. Pollutant emission reduction of diesel vehicles under the CS scenario in Tianjin.

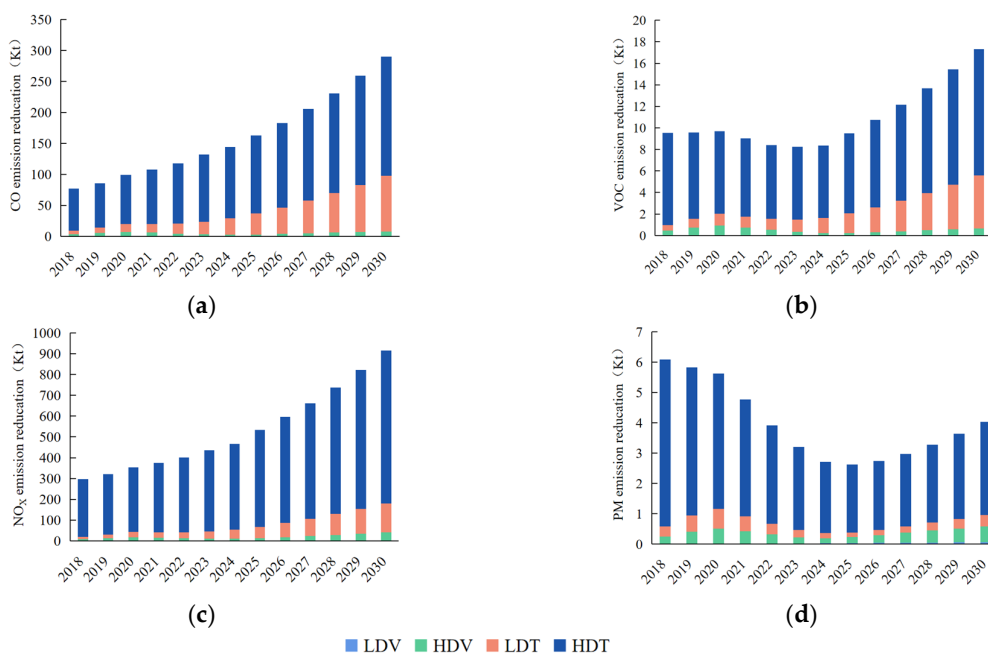


Figure S6. Pollutant emission reduction of diesel vehicles under the CS scenario in Hebei.

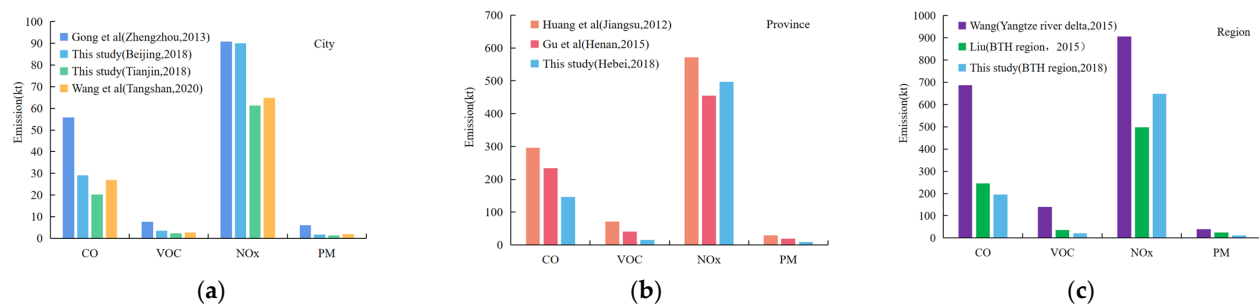


Figure S7. Comparison with other studies.

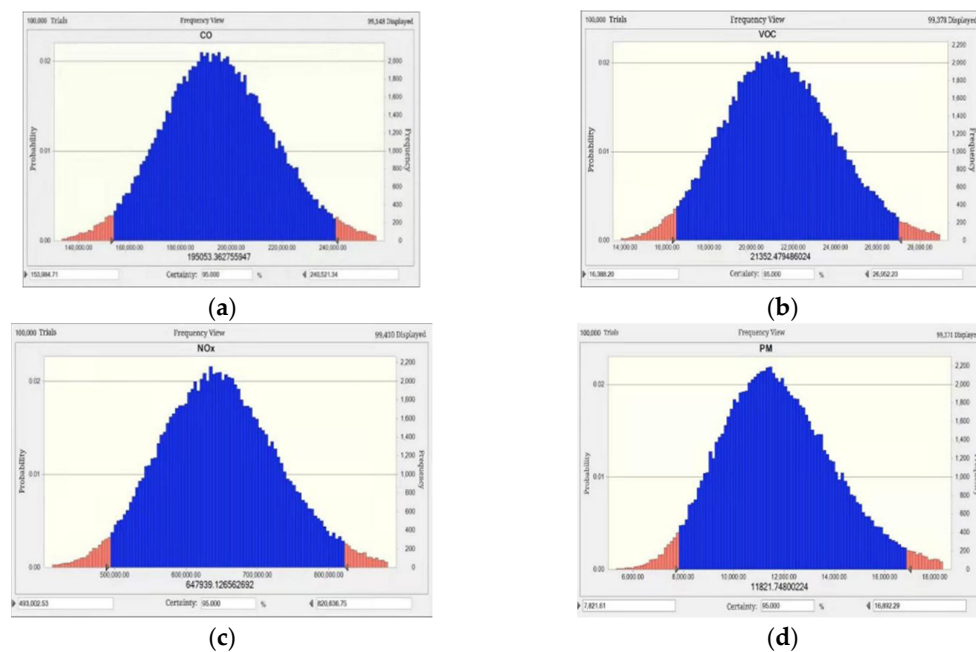


Figure S8. The distribution map of uncertainty analysis.