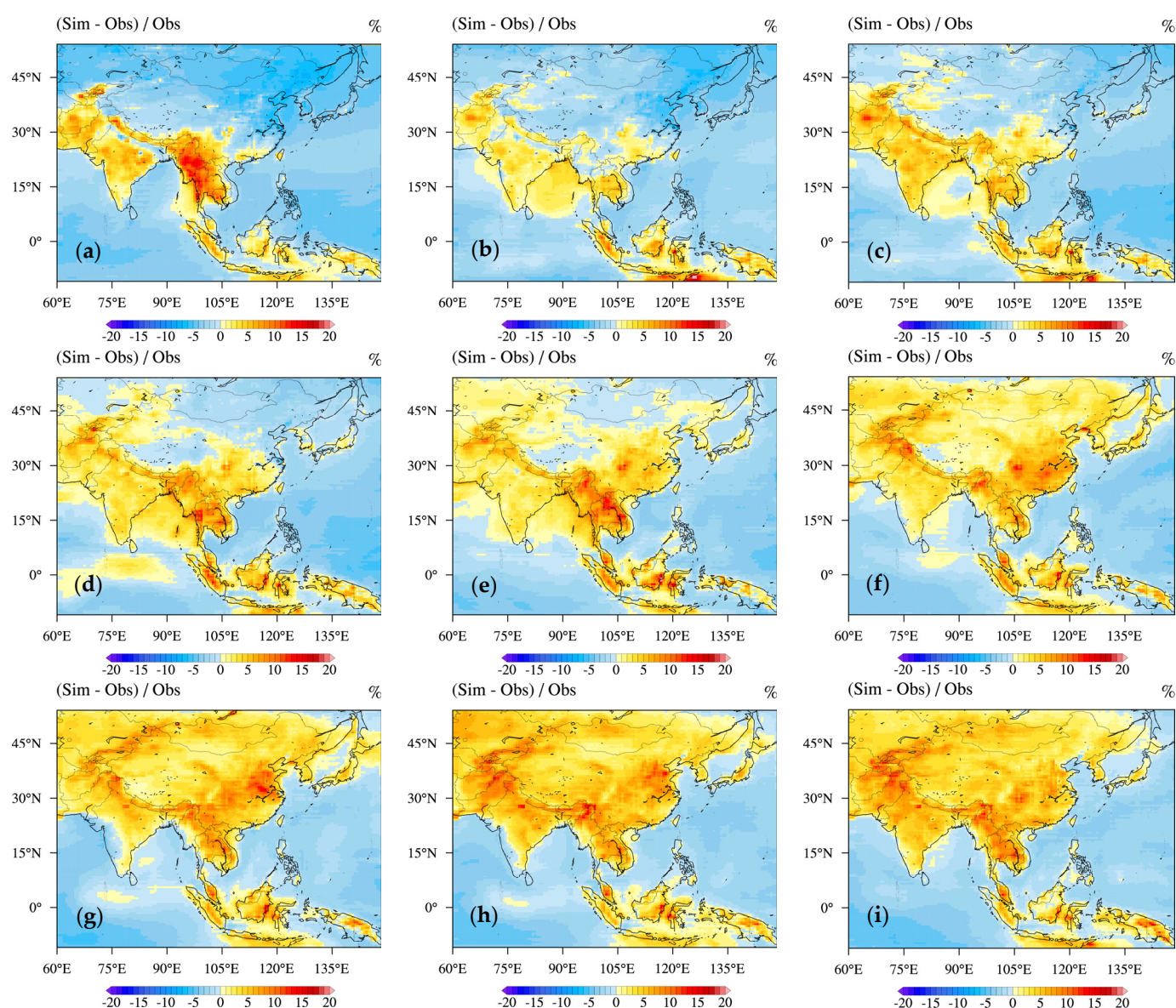


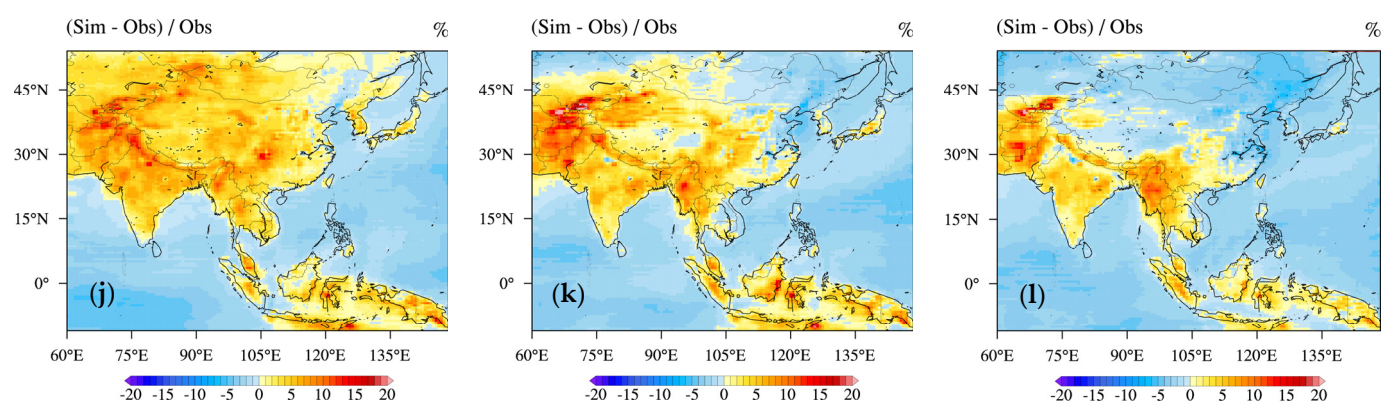
# Effect of Surface Methane Controls on Ozone Concentration and Rice Yield in Asia

Kenichi Tatsumi

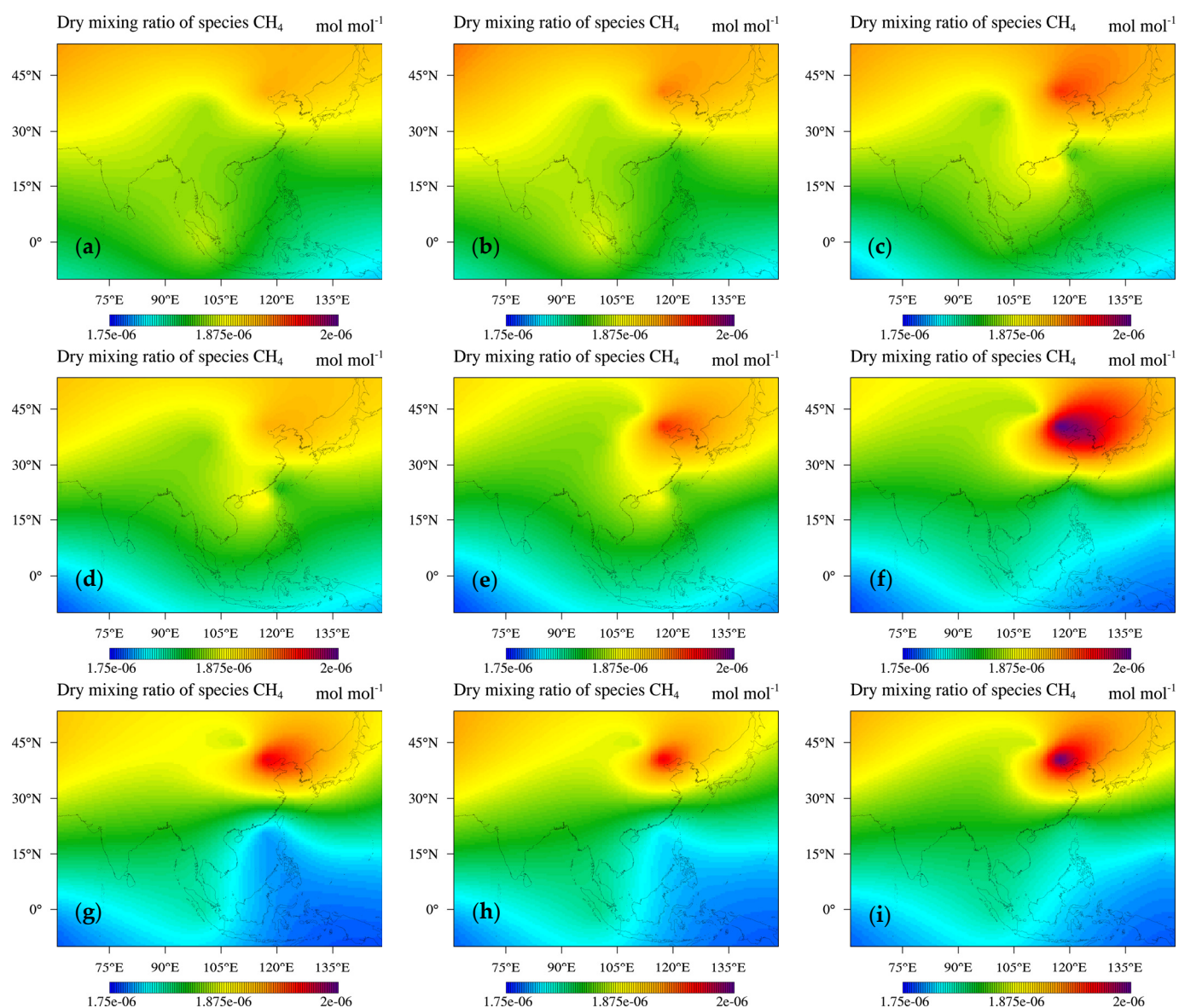
School of Data Science, Nagoya City University, Aichi, 467-8501; tatsumi@ds.nagoya-cu.ac.jp;  
Tel.: +81-(0)52-872-6270

**Abstract:** Effect of surface methane on rice yield

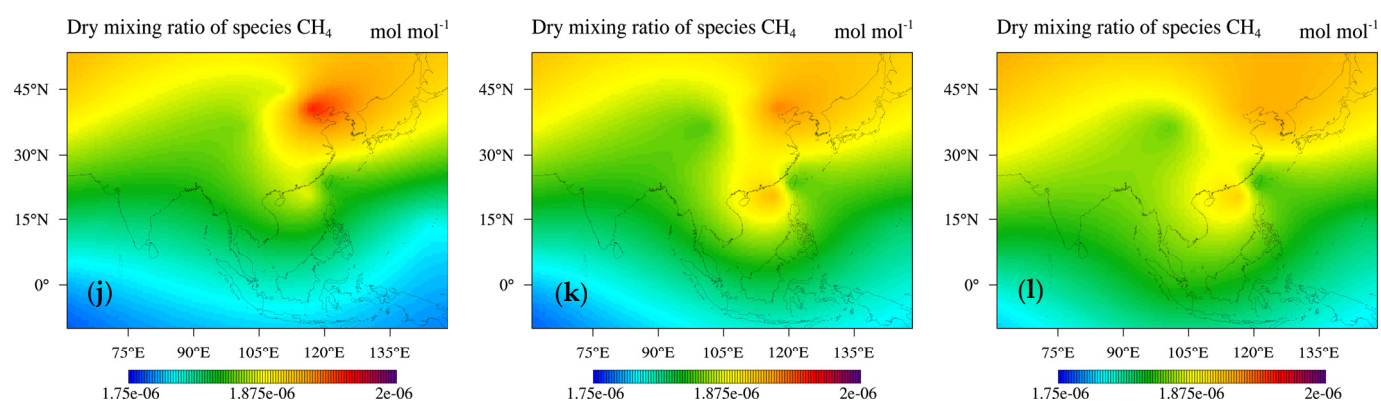




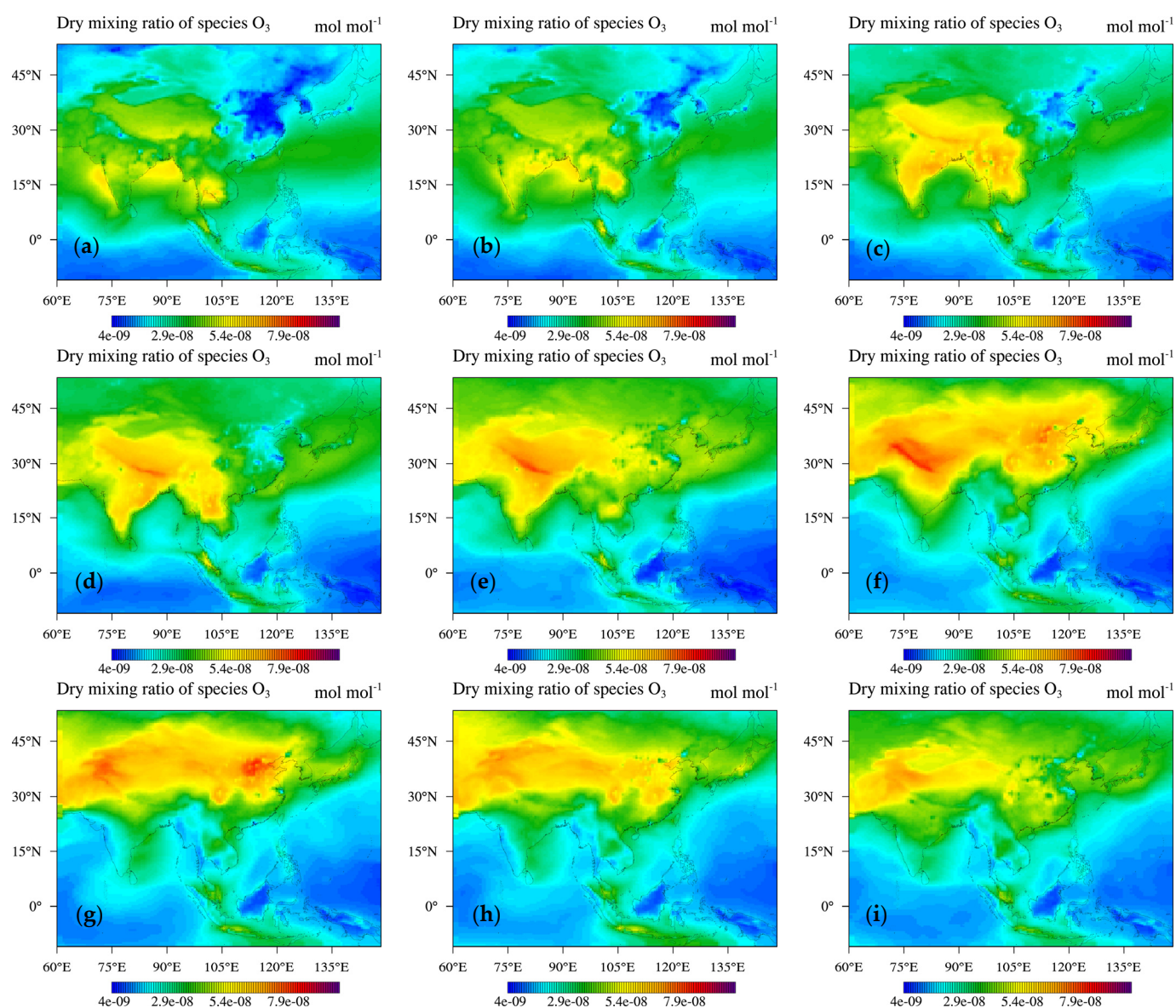
**Figure S1.** Relative error between observed and simulated surface O<sub>3</sub> concentration for 2010 at (a) January, (b) February, (c) March, (d) April, (e) May, (f) June, (g) July, (h) August, (i) September, (j) October, (k) November, and (l) December.

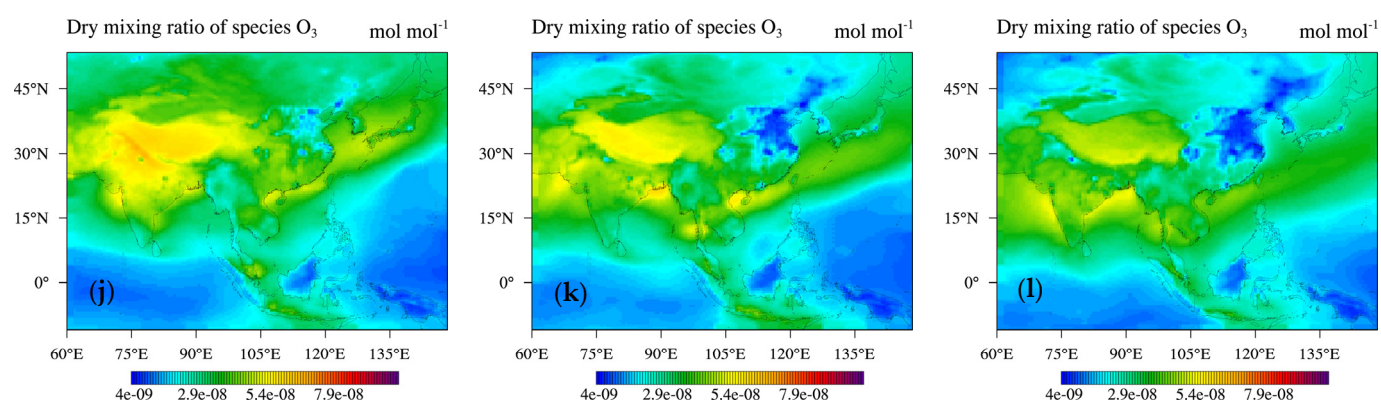




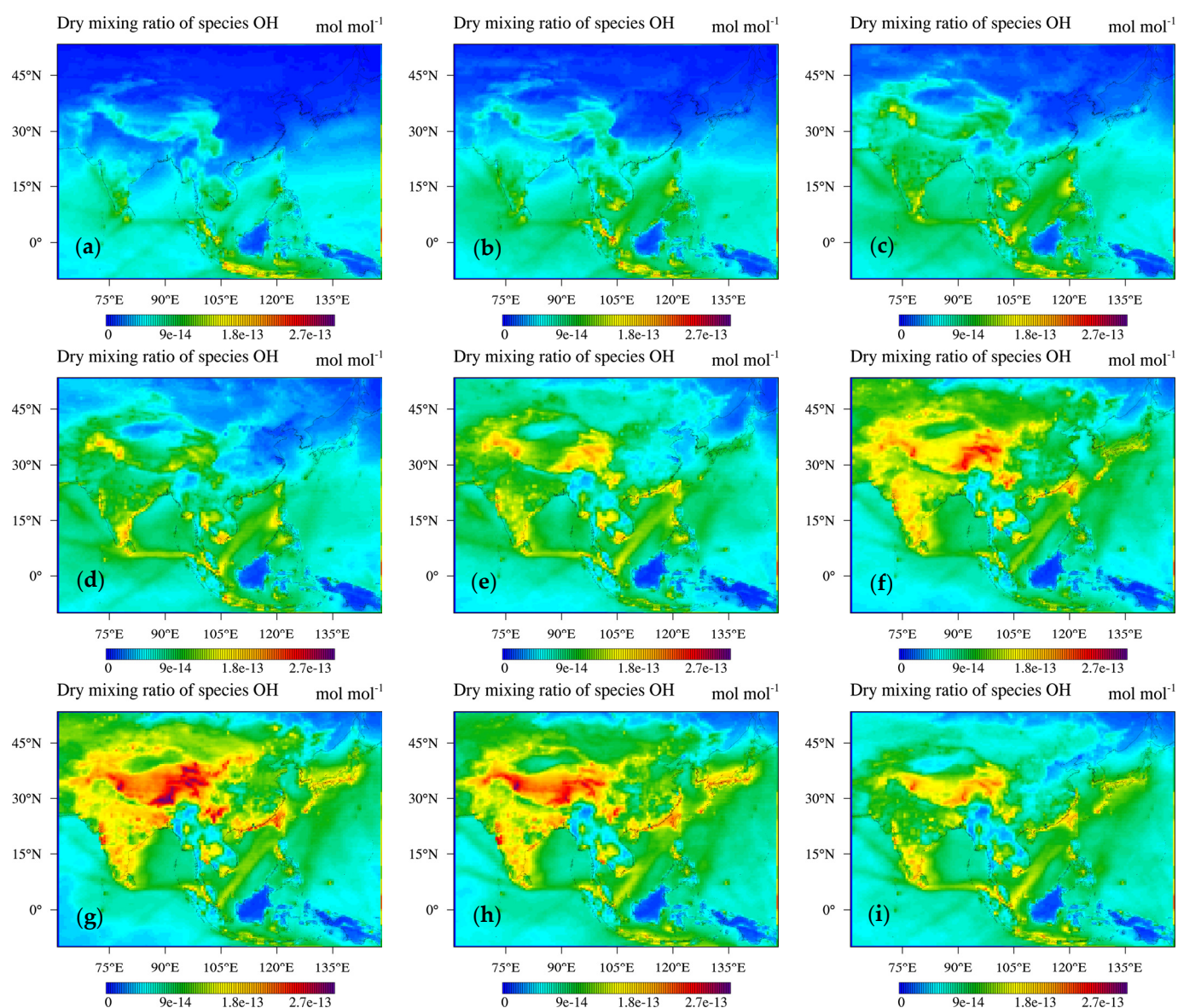


**Figure S2.** Surface  $\text{CH}_4$  mixing ratio for 2010 at (a) January, (b) February, (c) March, (d) April, (e) May, (f) June, (g) July, (h) August, (i) September, (j) October, (k) November, and (l) December.

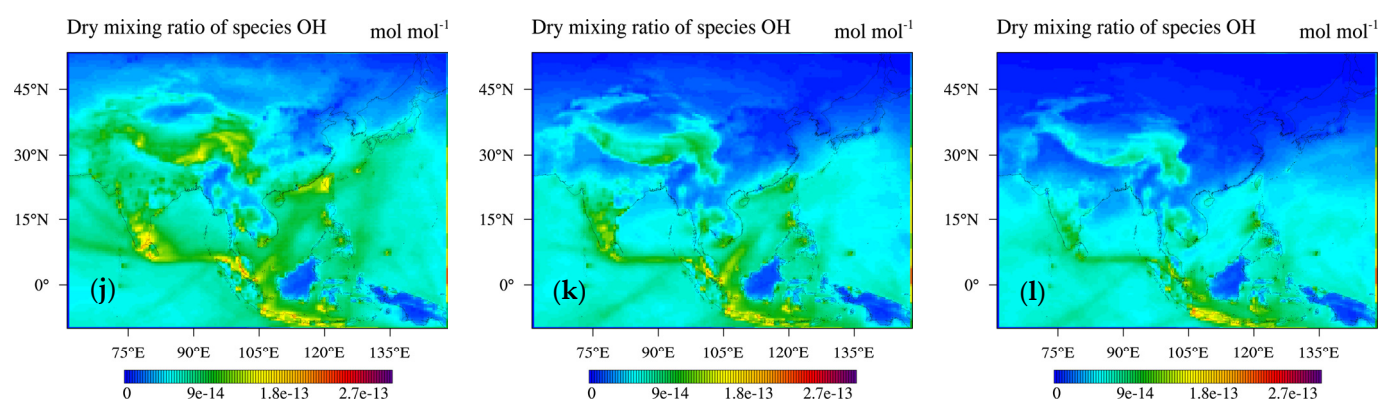




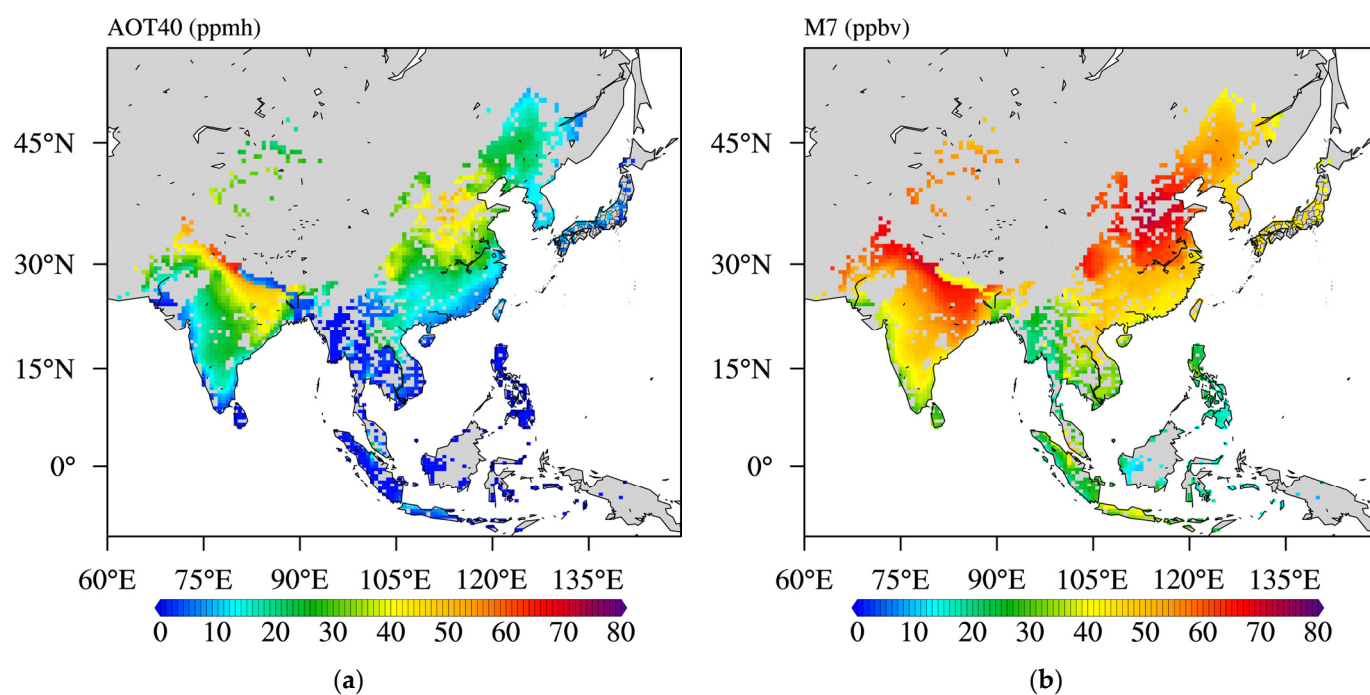
**Figure S3.** Surface  $O_3$  mixing ratio for 2010 at (a) January, (b) February, (c) March, (d) April, (e) May, (f) June, (g) July, (h) August, (i) September, (j) October, (k) November, and (l) December.







**Figure S4.** Surface OH mixing ratio for 2010 in (a) January, (b) February, (c) March, (d) April, (e) May, (f) June, (g) July, (h) August, (i) September, (j) October, (k) November, and (l) December.



**Figure S5.** Distribution of surface (a) AOT40 and (b) M7 values for rice production areas for 2010 for CASE 1.