

Supplementary for

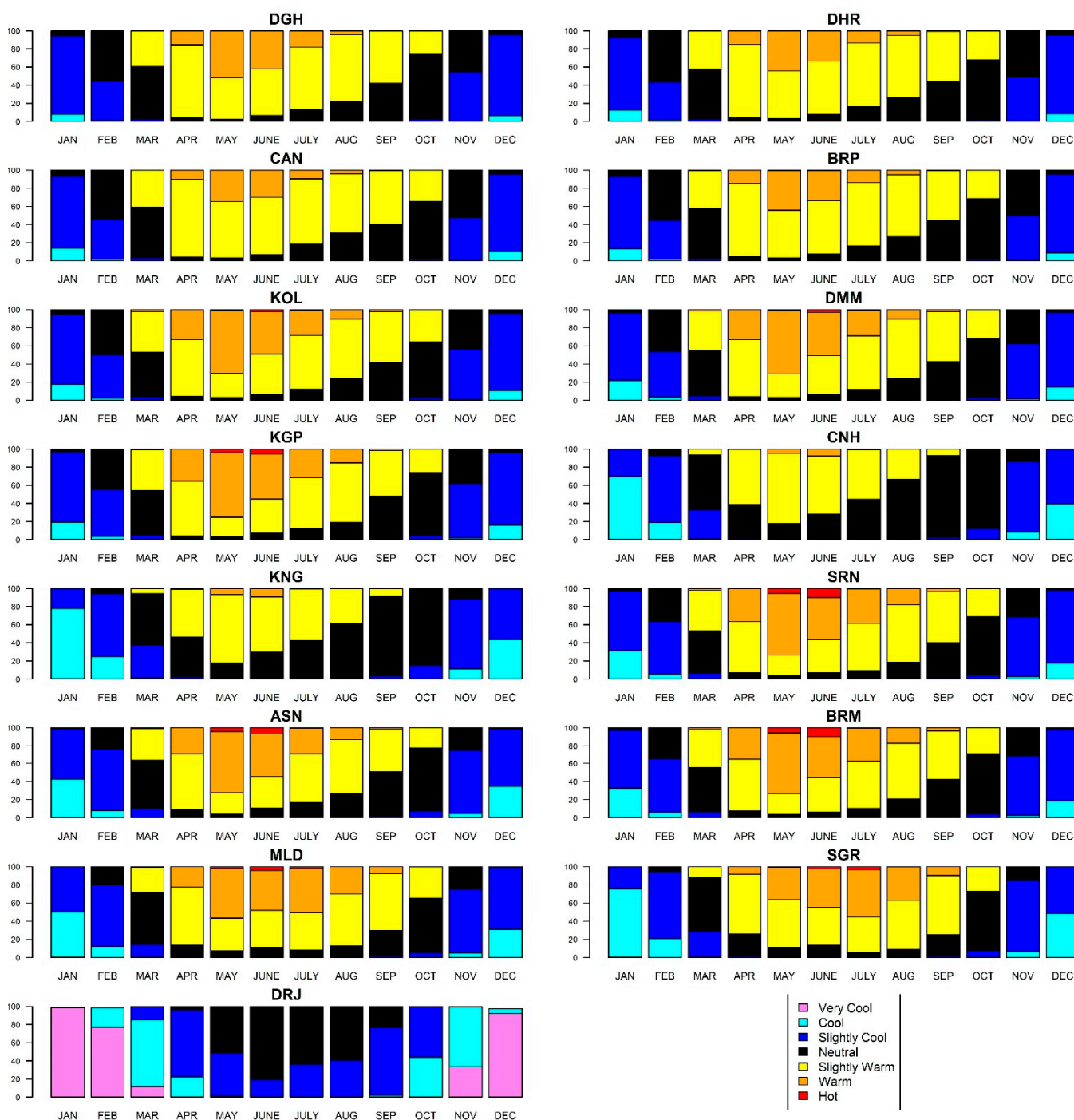
# Future Changes in Thermal Bioclimate Conditions over West Bengal, India, Based on a Climate Model

Sourabh Bal <sup>1,2,\*</sup> and Ingo Kirchner <sup>2</sup>

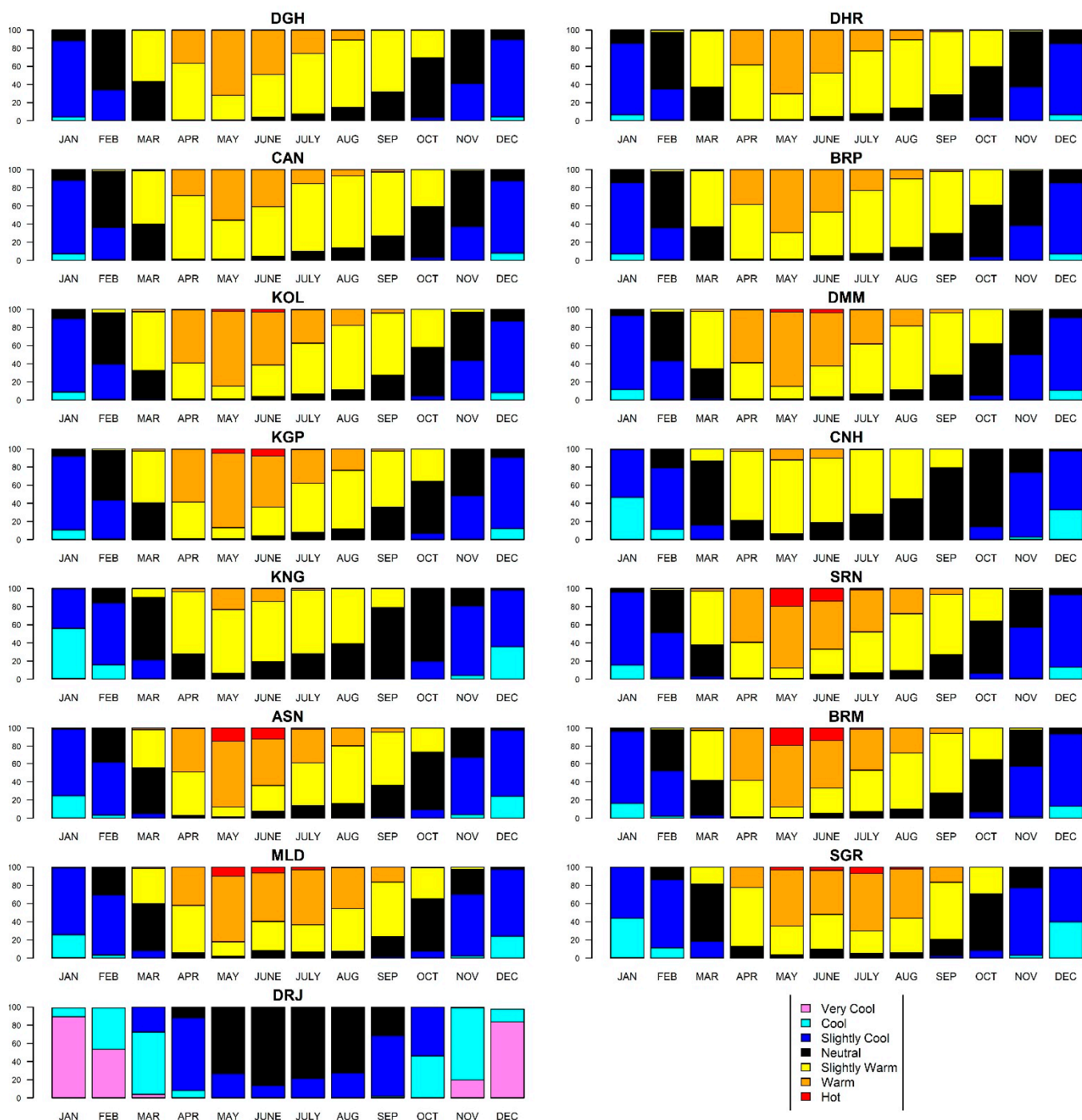
<sup>1</sup> Department of Physics, Swami Vivekananda Institute of Science & Technology, Kolkata 700145, India

<sup>2</sup> Institute for Meteorology, Freie Universität, 12165 Berlin, Germany

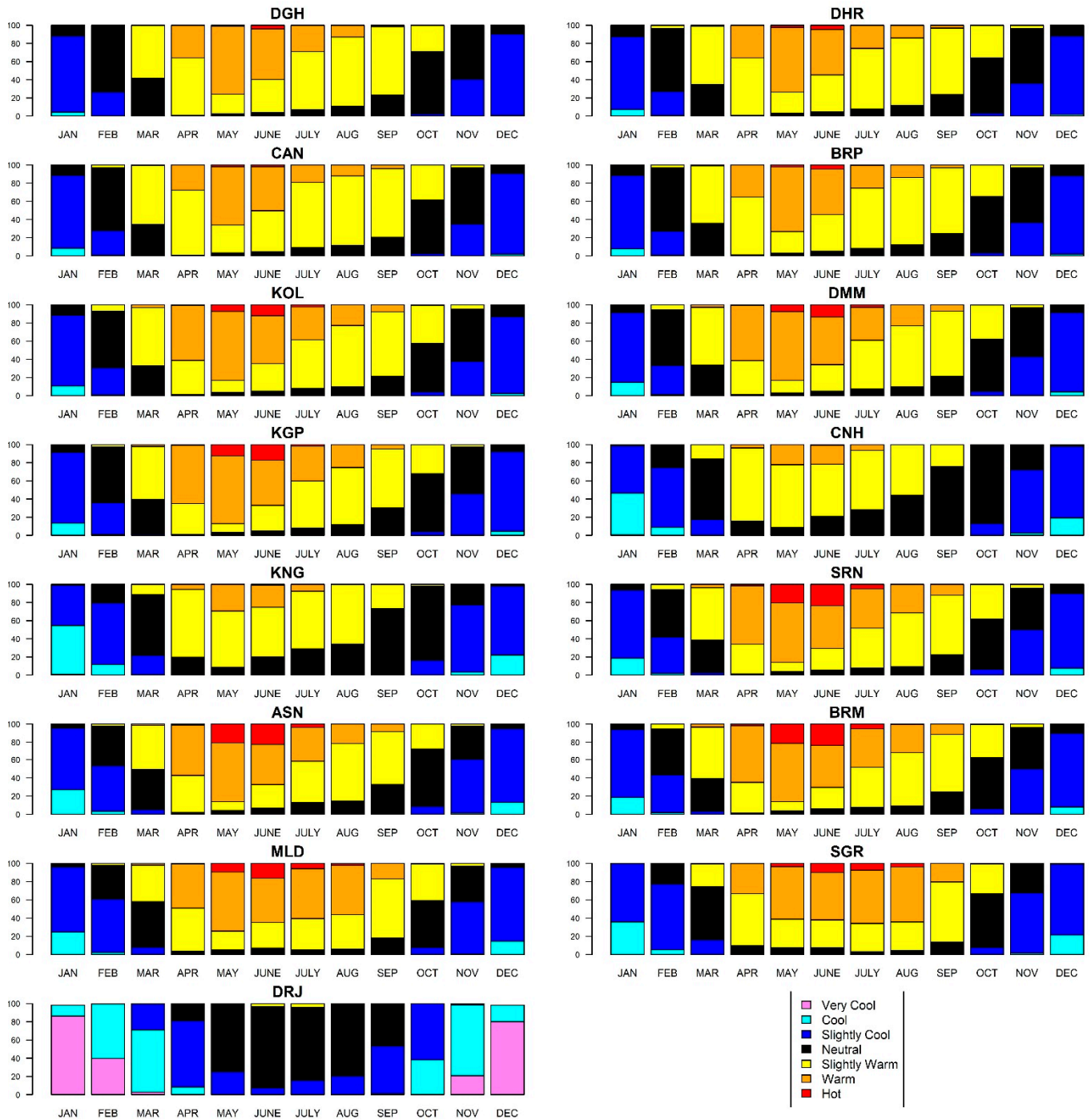
\* Correspondence: sourabhbhal@gmail.com or sourabhbhal@zedat.fu-berlin.de



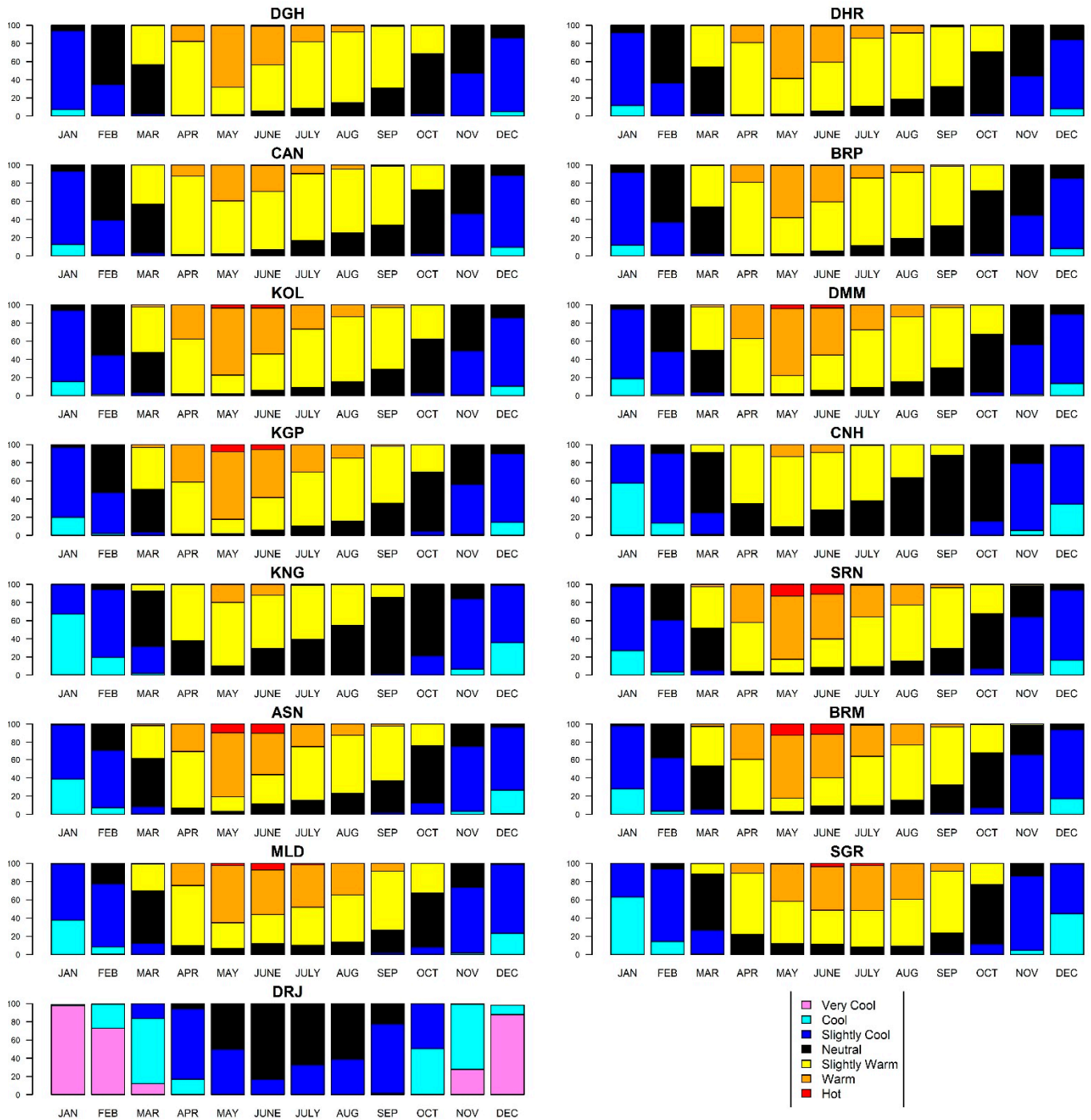
**Figure S1.** Intra-annual frequency diagram of different PET classes over the investigated stations extracted from the CORDEX (2016-2035) under RCP4.5 condition. The abbreviations of each station are explained in Table 1.



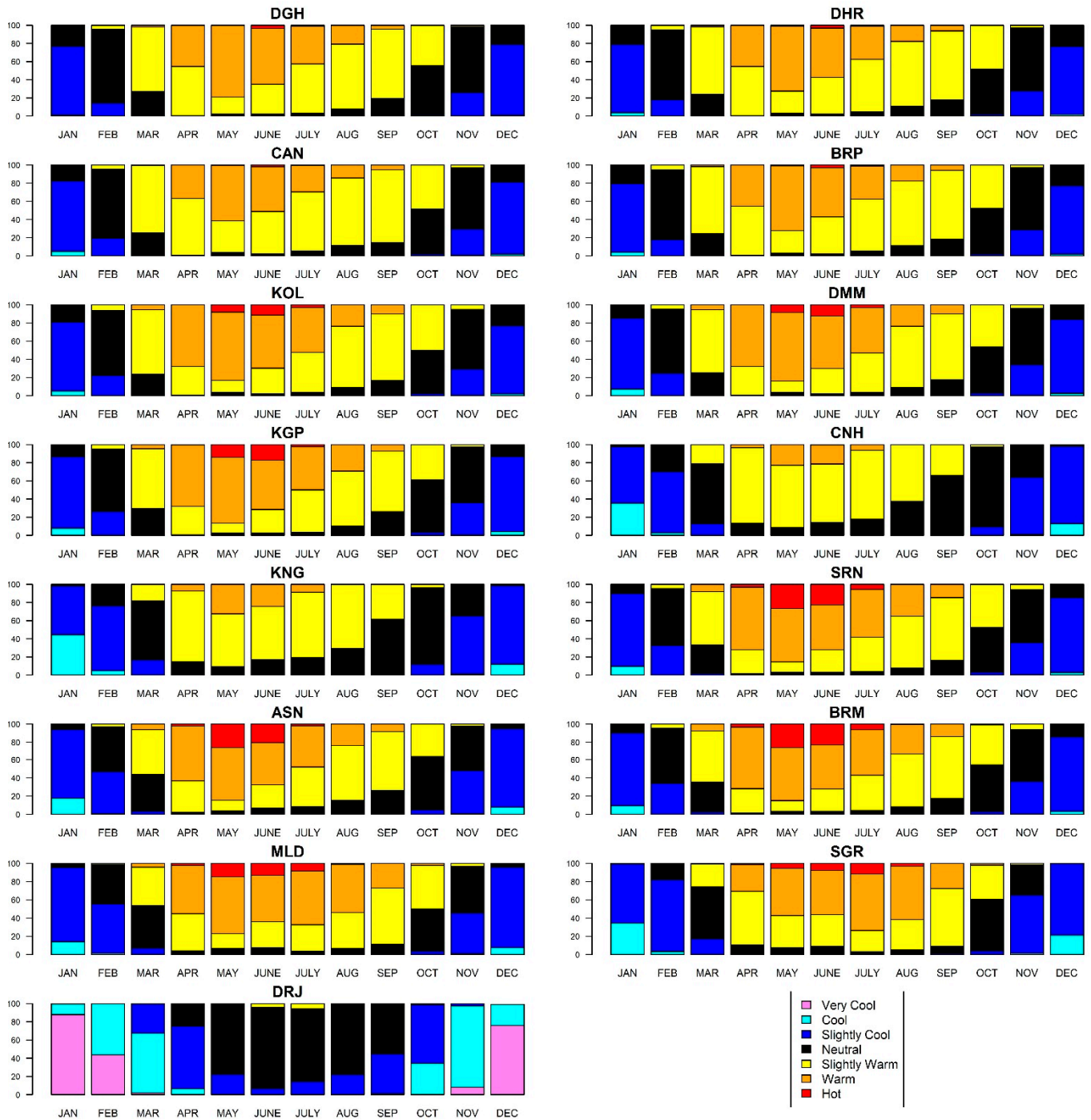
**Figure S2.** Intra-annual frequency diagram of different PET classes over the investigated stations extracted from the CORDEX (2046-2065) under RCP4.5 condition. The abbreviations of each station are explained in Table 1.



**Figure S3.** Intra-annual frequency diagram of different PET classes over the investigated stations extracted from the CORDEX (2080-2099) under RCP4.5 condition. The abbreviations of each station are explained in Table 1.

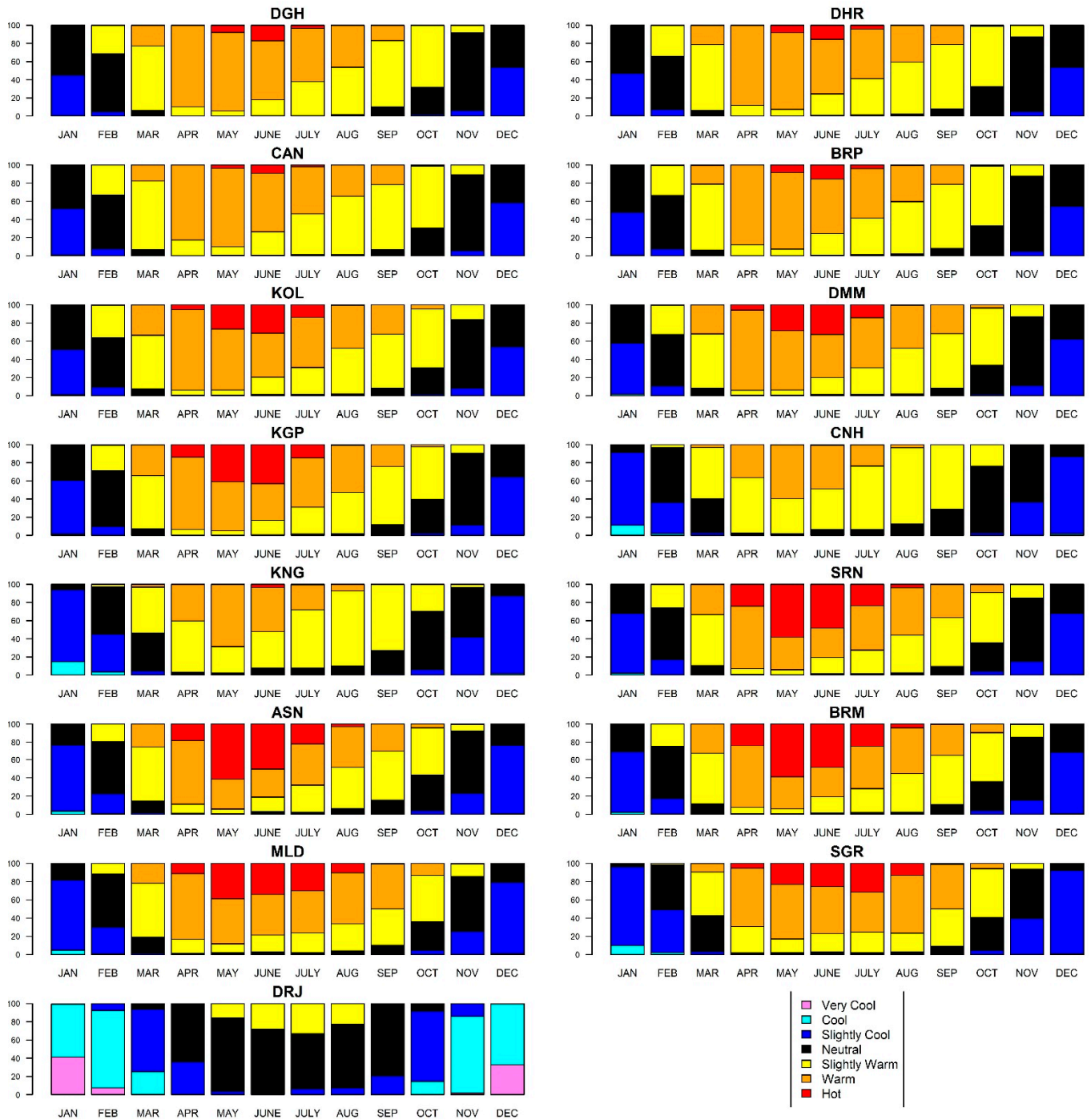


**Figure S4.** Intra-annual frequency diagram of different PET classes over the investigated stations extracted from the CORDEX (2016-2035) under RCP8.5 condition. The abbreviations of each station are explained in Table 1.

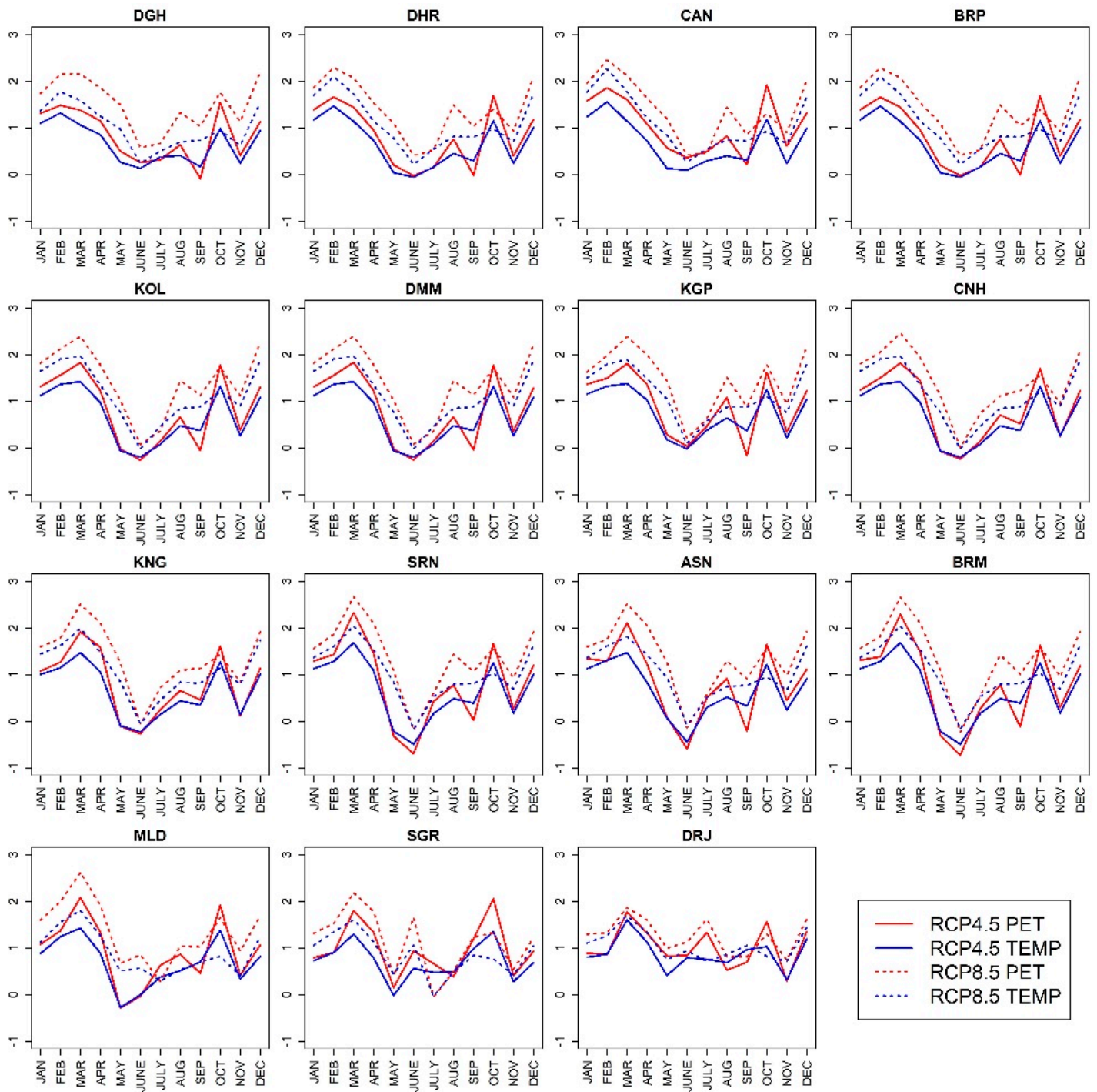


**Figure S5.** Intra-annual frequency diagram of different PET classes over the investigated stations extracted from the CORDEX (2046-2065) under RCP8.5 condition. The abbreviations of each station are explained in Table 1.

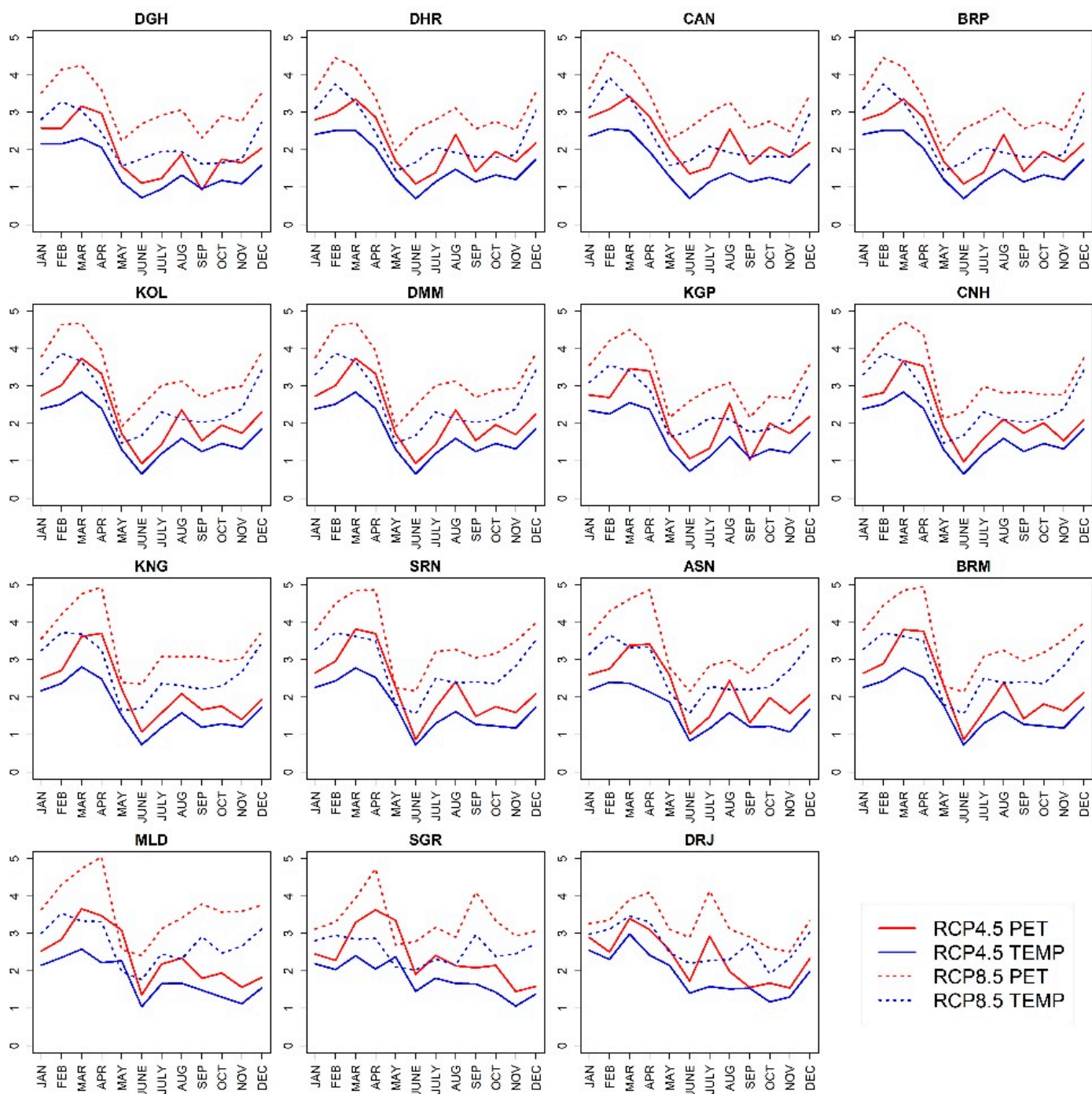




**Figure S6.** Intra-annual frequency diagram of different PET classes over the investigated stations extracted from the CORDEX (2080-2099) under RCP8.5 condition. The abbreviations of each station are explained in Table 1.



**Figure S7.** Mean monthly differences of PET and temperature for 15 considered stations in WB under RCP4.5 and RCP8.5 from CORDEX during 2016-2035 with respect to reference period (1986-2005). The abbreviations of all the investigated stations are described in Table 1.



**Figure S8.** Mean monthly differences of PET and temperature for 15 considered stations in WB under RCP4.5 and RCP8.5 from CORDEX during 2046-2065 with respect to reference period (1986-2005). The abbreviations of all the investigated stations are described in Table 1.



**Table S1.** Descriptive statistics for the variables temperature, relative humidity, wind speed, cloud cover, PET for all the study sites during the period from 1986 to 2005 and for the period 2016-2035 under RCP4.5 and RCP8.5 conditions. PET values are calculated using RayMan model and meteorological variables are retrieved from the CORDEX archive.

Variables	Station	1986-2005 (HISTORICAL)					2016-2035 (RCP4.5)					2016-2035 (RCP8.5)				
		Mini- mum	Maximum	Mean	Median	Standard De- viation	Mini- mum	Maxi- mum	Mean	Me- dian	Standard Deviation	Mini- mum	Maxi- mum	Mean	Me- dian	Standard Deviation
Temperature (°C)	Digha	11.1	39.5	25.6	26.7	5.5	11.1	40.2	26.3	27.2	5.3	11.8	40.3	26.6	27.5	5.2
	Diamond Harbour	9	40	25.5	26.8	5.8	9.8	38.8	26.1	27.4	5.4	9.9	39.6	26.6	27.8	5.4
	Canning	9.0	38.5	25.2	26.8	5.6	9.6	37.0	25.8	27.3	5.3	9.9	38.9	26.3	27.6	5.3
	Baruipur	9.0	40.0	25.5	26.8	5.8	9.8	38.8	26.1	27.4	5.4	9.9	39.6	26.6	27.8	5.4
	Alipore (Kolkata)	7.3	42.1	25.6	26.8	6.4	9.0	41.4	26.3	27.5	6.0	9.2	41.4	26.7	27.9	6
	Dum Dum	7.3	42.1	25.6	26.8	6.4	9.0	41.4	26.3	27.5	6.0	9.2	41.4	26.7	27.9	6
	Kharagpur	8.1	42.4	25.4	26.6	6.5	8.3	42.5	26.2	27.2	6.3	9.1	42.8	26.6	27.6	6.3
	Cinsurah	7.3	42.1	25.6	26.8	6.4	9.0	41.4	26.3	27.5	6.0	9.2	41.4	26.7	27.9	6
	Krishnanagar	6.6	41.8	25.5	26.6	6.5	8.7	41.4	26.1	27.4	6.2	9.2	42.7	26.7	27.7	6.3
	Srinekatan	6.1	42.5	25.4	26.5	6.8	7.9	41.6	26.1	27.2	6.5	9.1	43.3	26.5	27.5	6.6
	Asansol	6.6	42.8	24.8	25.8	6.8	7.5	41.1	25.4	26.5	6.5	8	42.5	25.8	26.8	6.6
	Birbhum	6.1	42.5	25.4	26.5	6.8	7.9	41.6	26.1	27.2	6.5	9.1	43.3	26.5	27.5	6.6
	Malda	7.2	39.0	24.8	26.0	6.9	8.7	39.7	25.5	26.8	6.7	8.3	41.2	25.7	26.8	6.8
	Siliguri	6.1	39.4	24.1	25.4	6.9	8.2	40.3	24.8	26.1	6.9	7.6	40.3	24.9	26.2	6.8
	Darjeeling	-3.9	22.1	11.0	12.7	6.1	-4.6	23.1	11.9	13.6	6.1	-4	22.7	12	13.9	6
Relative Humidity (%)	Digha	43.6	97.4	77.0	76.8	8.0	35.7	98.1	77.5	77.0	7.9	45.3	97.5	77.4	77.3	8
	Diamond Harbour	26.7	97.8	74.7	75.1	12.4	22.9	98.4	75.0	75.4	12.3	32.7	98.7	75	76.1	12.5
	Canning	32.1	98.0	76.3	76.6	11.2	34.5	98.7	76.5	76.6	11.1	36.4	98.9	76.6	77.4	11.2
	Baruipur	26.7	97.8	74.7	75.1	12.4	22.9	98.4	75.0	75.4	12.3	32.7	98.7	75	76.1	12.5
	Alipore (Kolkata)	14.1	97.9	73.4	76.0	14.7	12.4	98.3	73.7	76.2	14.4	21	98	73.4	76.4	14.7
	Dum Dum	14.1	97.9	73.4	76.0	14.7	12.4	98.3	73.7	76.2	14.4	21	98	73.5	76.4	14.7
	Kharagpur	12.7	97.7	69.7	71.8	16.8	12.0	98.3	70.5	72.4	16.7	14.7	97.9	70	72.8	16.9
	Cinsurah	14.1	97.9	73.4	76.0	14.7	12.4	98.3	73.7	76.2	14.4	21	98	73.5	76.4	14.7
	Krishnanagar	5.5	98.6	69.7	75.0	18.8	8.8	98.3	70.0	74.8	18.3	9.5	98	69.7	74.9	18.5
	Srinekatan	4.2	98.1	67.7	73.6	20.9	7.9	97.7	68.1	74.3	20.6	7.1	97.8	67.7	73.8	20.6
	Asansol	3.1	98.0	59.3	65.1	25.3	2.3	98.2	59.9	66.0	25.5	4	98.4	59.4	65.5	25
	Birbhum	4.5	98.0	64.9	70.9	22.8	6.3	98.2	65.4	72.1	22.7	5.2	98	64.9	71.2	22.5
	Malda	5.8	97.9	65.9	75.1	23.7	5.2	98.2	65.2	73.4	23.3	4.3	98.1	65.1	73.5	23.3
	Siliguri	2.2	97.4	51.1	56.1	27.6	2.2	98.1	51.2	55.9	27.1	2.3	98.2	49.5	53.4	26.2
	Darjeeling	2.8	99.1	53.4	56.4	30.3	3.0	99.8	54.2	58.7	29.8	3.1	99.4	52.9	54.7	29.5
Wind Speed (ms <sup>-1</sup> )	Digha	0.9	16.3	4.0	3.6	1.9	0.7	23.0	4.0	3.6	2.1	0.9	22.9	4.1	3.6	2

	Diamond Harbour	0.6	15.9	3.6	3.1	1.8	0.6	18.8	3.6	3.1	2.9	0.6	15.6	3.7	3.2	1.9
	Canning	0.6	19.8	3.5	3.1	1.8	0.6	18.7	3.6	3.1	1.9	0.6	16.3	3.6	3.1	1.9
	Baruipur	0.6	15.9	3.6	3.1	1.8	0.6	18.8	3.6	3.1	1.9	0.6	15.6	3.7	3.2	1.9
	Alipore (Kolkata)	0.6	13.5	3.2	2.8	1.5	0.5	16.4	3.2	2.8	1.6	0.4	13.8	3.2	2.9	1.6
	Dum Dum	0.6	13.5	3.2	2.8	1.5	0.5	16.4	3.2	2.8	1.6	0.4	13.8	3.2	2.9	1.6
	Kharagpur	0.6	14.3	3.3	3.0	1.5	0.7	17.4	3.3	3.0	1.6	0.7	16.6	3.3	3	1.6
	Cinsurah	0.6	13.5	3.2	2.8	1.5	0.5	16.4	3.2	2.8	1.6	0.4	13.8	3.2	2.9	1.6
	Krishnanagar	0.5	13.7	3.2	2.9	1.6	0.5	18.6	3.2	2.8	1.7	0.6	14.6	3.3	2.9	1.6
	Srinekatan	0.5	12.5	3.1	2.8	1.4	0.4	17.0	3.1	2.8	1.5	0.6	13.6	3.1	2.8	1.5
	Asansol	0.7	12.5	3.2	2.9	1.4	0.6	15.0	3.2	2.9	1.5	0.6	12.2	3.2	2.9	1.4
	Birbhum	0.5	12.5	3.1	2.8	1.4	0.4	17.0	3.1	2.8	1.5	0.6	13.6	3.1	2.8	1.5
	Malda	0.6	13.1	3.0	2.7	1.5	0.5	14.2	3.0	2.7	1.5	0.6	14.9	3	2.6	1.5
	Siliguri	0.6	12.1	2.7	2.4	1.4	0.6	13.0	2.7	2.3	1.5	0.6	14.9	2.7	2.3	1.4
	Darjeeling	0.3	2.2	1.0	1.0	0.3	0.3	2.9	1.0	1.0	0.3	0.3	2.7	1	1	0.3
Cloud Cover (Octa)	Digha	0.0	8.0	2.6	1.9	2.5	0.0	8.0	2.6	1.9	2.6	0	8	2.6	1.8	2.5
	Diamond Harbour	0.0	8.0	2.7	2.1	2.5	0.0	8.0	2.7	1.9	2.6	0	8	2.6	1.9	2.5
	Canning	0.0	8.0	2.7	2.2	2.5	0.0	8.0	2.7	2.0	2.6	0	8	2.6	1.9	2.5
	Baruipur	0.0	8.0	2.7	2.1	2.5	0.0	8.0	2.7	1.9	2.6	0	8	2.6	1.9	2.5
	Alipore (Kolkata)	0.0	8.0	2.6	1.9	2.5	0.0	8.0	2.6	1.8	2.6	0	8	2.5	1.7	2.5
	Dum Dum	0.0	8.0	2.6	1.9	2.5	0.0	8.0	2.6	1.8	2.5	0	8	2.5	1.7	2.5
	Kharagpur	0.0	8.0	2.6	1.8	2.6	0.0	8.0	2.6	1.7	2.6	0	8	2.5	1.6	2.6
	Cinsurah	0.0	8.0	2.6	1.9	2.5	0.0	8.0	2.6	1.8	2.6	0	8	2.5	1.7	2.5
	Krishnanagar	0.0	8.0	2.5	1.8	2.5	0.0	8.0	2.5	1.6	2.5	0	8	2.4	1.6	2.5
	Srinekatan	0.0	8.0	2.5	1.7	2.5	0.0	8.0	2.4	1.5	2.5	0	8	2.4	1.5	2.5
	Asansol	0.0	8.0	2.5	1.7	2.6	0.0	8.0	2.5	1.5	2.6	0	8	2.4	1.5	2.5
	Birbhum	0.0	8.0	2.5	1.7	2.5	0.0	8.0	2.4	1.5	2.5	0	8	2.4	1.5	2.5
	Malda	0.0	8.0	2.4	1.5	2.5	0.0	8.0	2.3	1.4	2.5	0	8	2.3	1.3	2.5
	Siliguri	0.0	8.0	2.4	1.4	2.5	0.0	8.0	2.3	1.3	2.5	0	8	2.3	1.3	2.5
	Darjeeling	0.0	8.0	3.3	3.0	2.6	0.0	8.0	3.1	2.9	2.6	0	8	3.1	2.8	2.6
PET (°C)	Digha	6.3	44.5	25.4	26.3	8.0	5.6	45.7	26.2	27.1	7.7	6.8	44.8	26.9	27.9	7.7
	Diamond Harbour	5.3	45.4	25.3	26.3	8	4.7	44.7	26.1	27.1	7.7	5.8	45.4	26.7	27.7	7.7
	Canning	4.9	44.4	24.9	26.1	7.8	5.0	43.0	25.9	27.1	7.5	5.7	45	26.2	27.3	7.4
	Baruipur	5.2	45.4	25.3	26.3	8.0	4.7	44.7	26.1	27.1	7.7	5.7	45.4	26.7	27.7	7.7
	Alipore (Kolkata)	3.9	47.5	25.8	26.6	8.9	4.0	47.9	26.6	27.5	8.5	4.9	46.7	27.2	28.2	8.5
	Dum Dum	3.4	47.6	25.6	26.5	9.1	3.6	48.0	26.4	27.3	8.7	4.4	46.8	27	28	8.7
	Kharagpur	3.8	48.0	25.6	26.4	9.2	3.1	49.6	26.5	27.1	9.0	4.4	49	27.1	27.9	9
	Cinsurah	0.3	41.9	21.2	22.2	7.9	1.4	43.0	22.0	23.4	7.6	2.1	41.8	22.6	23.8	7.6
	Krishnanagar	-0.4	41.6	21.0	21.9	8.1	1.1	41.7	21.8	23.1	7.8	1.9	44.9	22.3	23.4	7.9
	Srinekatan	2.1	48.2	25.6	26.4	9.7	2.8	47.5	26.5	27.5	9.4	3.6	49.9	27	27.9	9.5

<b>Asansol</b>	1.8	48.8	24.7	25.3	9.8	1.9	48.9	25.5	26.2	9.5	2.7	49.5	26.1	26.9	9.6
<b>Birbhum</b>	2.0	48.5	25.6	26.3	9.7	2.7	47.6	26.4	27.3	9.4	3.5	49.4	27	27.9	9.5
<b>Malda</b>	3.1	46.6	24.9	26.0	10.0	3.2	47.1	25.8	27.2	9.8	3	49	26.2	27.3	9.8
<b>Siliguri</b>	2.4	46.2	23.9	24.7	10.1	2.6	47.5	24.8	26.2	10.1	3.4	47.5	25	26.2	10
<b>Darjeeling</b>	-8.4	27.0	10.4	11.7	8.9	-9.8	28.4	11.4	12.9	8.9	-8.4	27.9	11.6	13.1	8.9

**Table S2.** Descriptive statistics for the variables temperature, relative humidity, wind speed, cloud cover, PET for all the study sites during the period 2046-2065 under RCP4.5 and RCP8.5 conditions. PET values are calculated using RayMan model and meteorological variables are retrieved from the CORDEX archive.

		2046-2065 (RCP4.5)					2046-2065 (RCP8.5)				
Variables	Station	Minimum	Maximum	Mean	Median	Standard Deviation	Minimum	Maximum	Mean	Median	Standard Deviation
<b>Temperature (°C)</b>	<b>Digha</b>	12.3	39.4	27.1	28.0	5.3	13.8	42.2	27.8	28.5	5.2
	<b>Diamond Harbour</b>	10.9	38.7	27.1	28.3	5.5	12.1	43.3	27.8	28.8	5.3
	<b>Canning</b>	11.2	38.1	26.7	28.2	6.4	11.7	42.0	27.6	28.8	5.2
	<b>Baruipur</b>	10.9	38.7	27.1	28.3	5.5	12.1	43.3	27.8	28.8	5.3
	<b>Alipore (Kolkata)</b>	10.3	40.2	27.3	28.4	6.1	11.4	44.1	28.2	29.0	5.9
	<b>Dum Dum</b>	10.3	40.2	27.3	28.4	6.1	11.4	44.1	28.2	29.0	5.9
	<b>Kharagpur</b>	9.6	41.5	27.1	28.0	6.3	11.0	44.0	27.8	28.6	6.2
	<b>Cinsurah</b>	10.3	40.2	27.3	28.4	6.1	11.4	44.1	28.2	29.0	5.9
	<b>Krishnanagar</b>	10.2	40.8	27.2	28.2	6.3	11.2	43.2	28.2	29.1	6.1
	<b>Srinekatan</b>	9.4	42.2	27.2	28.1	6.7	11.0	42.9	28.2	29.0	6.5
	<b>Asansol</b>	8.8	42.3	26.4	27.3	6.7	10.7	42.9	27.5	28.0	6.5
	<b>Birbhum</b>	9.4	42.2	27.2	28.1	6.7	11.0	42.9	28.2	29.0	6.5
	<b>Malda</b>	8.3	40.8	26.5	27.6	6.9	10.5	41.4	27.5	28.6	6.7
<b>Relative Humidity (%)</b>	<b>Siliguri</b>	8.3	40.5	25.9	26.9	7.0	9.9	42.5	26.6	27.6	6.9
	<b>Darjeeling</b>	-1.5	25.2	12.9	14.5	5.9	-1.6	26.5	13.7	15.3	5.9
	<b>Digha</b>	44.5	97.2	77.4	77.0	8.0	45.6	97.3	77.3	77.0	7.8
	<b>Diamond Harbour</b>	33	98.5	75.5	76.4	11.8	32.2	97.8	74.6	74.8	12.2
	<b>Canning</b>	38.8	98.5	77.1	77.8	10.6	32.2	98.0	76.0	76.3	10.8
	<b>Baruipur</b>	33.0	98.5	75.5	76.4	11.8	32.2	97.8	74.6	74.8	12.2
	<b>Alipore (Kolkata)</b>	24.2	98.5	74.5	77.1	13.7	16.8	98.3	73.3	75.5	14.4
	<b>Dum Dum</b>	24.2	98.5	74.5	77.1	13.7	16.8	98.3	73.3	75.5	14.3
	<b>Kharagpur</b>	9.7	98.6	70.7	72.9	16.3	14.0	97.9	70.1	71.6	16.6
	<b>Cinsurah</b>	24.2	98.5	74.5	77.1	13.7	16.8	98.3	73.3	75.5	14.4
	<b>Krishnanagar</b>	6.9	98.2	71.2	76.0	17.3	9.7	98.3	66.7	73.7	18.0
	<b>Srinekatan</b>	3.4	98.2	69.2	75.1	19.7	6.9	98.1	68.0	72.6	20.1
	<b>Asansol</b>	3.3	98.3	60.6	65.8	24.6	3.8	97.9	60.2	65.1	24.8
	<b>Birbhum</b>	3.2	98.3	66.3	72.1	21.7	4.0	98.4	65.6	70.3	22.0
	<b>Malda</b>	5.8	98.7	66.4	73.7	22.1	6.6	98.1	65.3	71.9	22.3

	Siliguri	2.5	96.9	51.2	55.9	25.7	2.7	97.8	50.1	53.2	25.5
	Darjeeling	3.2	99.6	54.6	59.0	28.4	3.5	99.1	53.7	56.2	28.3
Wind Speed (ms <sup>-1</sup> )	Digha	0.8	21.8	4.1	3.5	2.2	0.8	22.2	4.1	3.6	2.2
	Diamond Harbour	0.6	20.1	3.7	3.1	2.1	0.6	18.4	3.7	3.2	2.1
	Canning	0.5	18.8	3.6	3.0	2.0	0.6	17.2	3.6	3.1	2.0
	Baruipur	0.6	20.1	3.7	3.1	2.1	0.6	18.4	3.7	3.2	2.1
	Alipore (Kolkata)	0.5	16.8	3.2	2.8	1.7	0.4	16.0	3.3	2.9	1.7
	Dum Dum	0.5	16.8	3.2	2.8	1.7	0.4	16.0	3.3	2.9	1.7
	Kharagpur	0.7	18.0	3.4	2.9	1.7	0.6	17.2	3.4	3.0	1.7
	Cinsurah	0.5	16.8	3.2	2.8	1.7	0.4	16.0	3.3	2.9	1.7
	Krishnanagar	0.4	16.8	3.3	2.9	1.7	0.5	15.5	3.4	3.0	1.7
	Srinekatan	0.6	15.8	3.1	2.8	1.5	0.5	14.4	3.2	2.9	1.6
	Asansol	0.5	15.6	3.1	2.9	1.5	0.6	15.8	3.2	2.9	1.5
	Birbhum	0.6	15.8	3.1	2.8	1.6	0.5	14.4	3.2	2.9	1.6
	Malda	0.5	14.6	3.0	2.7	1.5	0.6	13.8	3.0	2.7	1.5
	Siliguri	0.7	13.6	2.7	2.4	1.4	0.6	12.9	2.7	2.4	1.4
	Darjeeling	0.3	2.8	1.0	1.0	0.3	0.3	2.3	1.0	1.0	0.3
Cloud Cover (Octa)	Digha	0.0	8.0	2.6	1.8	2.6	0.0	8.0	2.5	1.7	2.5
	Diamond Harbour	0.0	8.0	2.6	1.8	2.5	0.0	8.0	2.5	1.8	2.5
	Canning	0.0	8.0	2.6	1.9	2.5	0.0	8.0	2.5	1.8	2.5
	Baruipur	0.0	8.0	2.6	1.8	2.5	0.0	8.0	2.5	1.8	2.5
	Alipore (Kolkata)	0.0	8.0	2.5	1.6	2.5	0.0	8.0	2.4	1.6	2.5
	Dum Dum	0.0	8.0	2.5	1.6	2.5	0.0	8.0	2.4	1.6	2.5
	Kharagpur	0.0	8.0	2.5	1.6	2.6	0.0	8.0	2.4	1.5	2.6
	Cinsurah	0.0	8.0	2.5	1.6	2.5	0.0	8.0	2.4	1.6	2.5
	Krishnanagar	0.0	8.0	2.4	1.6	2.5	0.0	8.0	2.3	1.5	2.4
	Srinekatan	0.0	8.0	2.4	1.5	2.5	0.0	8.0	2.3	1.4	2.4
	Asansol	0.0	8.0	2.4	1.5	2.6	0.0	8.0	2.3	1.4	2.5
	Birbhum	0.0	8.0	2.4	1.5	2.5	0.0	8.0	2.3	1.4	2.4
	Malda	0.0	8.0	2.2	1.3	2.5	0.0	8.0	2.2	1.3	2.4
	Siliguri	0.0	8.0	2.2	1.5	2.5	0.0	8.0	2.2	1.2	2.4
	Darjeeling	0.0	8.0	3.1	2.8	2.6	0.0	8.0	3.1	2.7	2.6
PET (°C)	Digha	8.5	45.2	27.4	28.2	7.8	9.2	49.4	28.5	29.4	7.7
	Diamond Harbour	7.3	43.8	27.5	28.6	7.8	9.1	51.1	28.4	29.4	7.7
	Canning	7.6	43.2	27.1	28.4	7.6	8.8	48.9	28.1	29.3	7.5
	Baruipur	7.3	43.7	27.4	28.5	7.8	9.1	51.0	28.4	29.4	7.7
	Alipore (Kolkata)	6.8	46.6	28.0	29.0	8.6	8.6	52.4	29.1	29.9	8.5
	Dum Dum	6.3	46.7	27.8	28.8	8.8	8.0	52.5	28.9	29.7	8.7



<b>Kharagpur</b>	6.3	48.2	27.8	28.5	8.9	7.0	52.1	28.8	29.2	9.0
<b>Cinsurah</b>	3.3	40.8	23.4	24.6	7.7	5.0	45.7	24.5	25.4	7.6
<b>Krishnanagar</b>	2.8	41.6	23.2	24.1	8.1	4.1	44.5	24.4	25.4	7.9
<b>Srinekatan</b>	4.5	49.0	27.9	28.8	9.7	7.5	50.9	29.2	29.8	9.5
<b>Asansol</b>	3.2	49.4	26.9	27.5	9.8	6.4	50.7	28.1	28.5	9.7
<b>Birbhum</b>	4.4	49.2	27.9	28.7	9.7	7.5	50.7	29.1	29.7	9.5
<b>Malda</b>	3.0	47.1	27.3	28.4	10.1	6.7	49.6	28.5	29.6	9.9
<b>Siliguri</b>	2.4	47.4	26.3	27.3	10.4	5.0	50.5	27.2	28.5	10.3
<b>Darjeeling</b>	-6.4	29.5	12.7	14.2	8.8	-6.8	31.0	13.6	15.0	9.0

**Table S3.** Descriptive statistics for the variables temperature, relative humidity, wind speed, cloud cover, PET for all the study sites during the period 2080-2099 under RCP4.5 and RCP8.5 conditions. PET values are calculated using RayMan model and meteorological variables are retrieved from the CORDEX archive.

Variables	Station	2080-2099 (RCP4.5)					2080-2099 (RCP8.5)				
		Minimum	Maximum	Mean	Median	Standard Deviation	Minimum	Maximum	Mean	Median	Standard Deviation
<b>Temperature (°C)</b>	<b>Digha</b>	11.5	41.4	27.4	28.1	5.3	12.2	43.9	29.7	30.3	5.3
	<b>Diamond Harbour</b>	10.3	41.4	27.3	28.4	5.5	10.8	43.2	29.7	30.6	5.3
	<b>Canning</b>	10.1	40.7	27.0	28.4	5.4	11.0	41.1	29.4	30.5	5.2
	<b>Baruipur</b>	10.3	41.4	27.3	28.4	5.5	10.8	43.2	29.7	30.6	5.3
	<b>Alipore (Kolkata)</b>	9.5	42.7	27.6	28.6	6.1	9.7	46.2	30.2	30.9	6.0
	<b>Dum Dum</b>	9.5	42.7	27.6	28.6	6.1	9.7	46.2	30.2	30.9	6.0
	<b>Kharagpur</b>	8.9	43.7	27.4	28.2	6.3	9.6	47.9	30.0	30.7	6.3
	<b>Cinsurah</b>	9.5	42.7	27.6	28.6	6.1	9.7	46.2	30.2	30.9	6.0
	<b>Krishnanagar</b>	9.1	42.5	27.6	28.5	6.3	9.6	46.3	30.3	31.0	6.2
	<b>Srinekatan</b>	8.6	43.2	27.6	28.4	6.7	10.2	47.2	30.3	31.0	6.7
	<b>Asansol</b>	8.6	41.8	26.9	27.7	6.6	9.6	46.6	29.7	30.2	6.8
	<b>Birbhum</b>	8.6	43.2	27.6	28.4	6.7	10.2	47.2	30.3	31.0	6.7
	<b>Malda</b>	8.5	42.1	27.1	28.2	6.8	9.6	44.7	29.6	30.6	6.9
	<b>Siliguri</b>	7.9	41.4	26.5	27.5	6.9	8.6	45.2	28.8	29.9	7.0
	<b>Darjeeling</b>	-2.3	25.5	13.3	15.0	5.8	0.0	27.3	16.1	17.7	5.8
<b>Relative Humidity (%)</b>	<b>Digha</b>	34.0	97.4	76.2	75.8	8.2	46.4	96.6	76.2	75.8	8.1
	<b>Diamond Harbour</b>	20.6	97.9	73.3	72.3	12.5	31.1	98.0	74.1	74.4	12.1
	<b>Canning</b>	26.9	98.1	74.9	74.2	11.2	33.0	98.1	75.6	76.1	10.9
	<b>Baruipur</b>	20.6	97.9	73.3	72.3	12.5	31.1	98.0	74.1	74.4	12.1
	<b>Alipore (Kolkata)</b>	19.4	98.3	71.7	72.5	14.7	23.6	98.2	73.1	75.7	14.1
	<b>Dum Dum</b>	19.4	98.3	71.7	72.5	14.7	23.6	98.2	73.1	75.7	14.1
	<b>Kharagpur</b>	14.9	98.4	68.6	68.9	16.7	14.1	98.0	70.0	71.3	16.0
	<b>Cinsurah</b>	19.4	98.3	71.7	72.5	14.7	23.6	98.2	73.1	75.7	14.1
	<b>Krishnanagar</b>	8.9	98.3	67.9	71.5	18.3	9.3	98.5	70.1	74.1	17.1

	Srinekatan	7.5	98.7	66.3	70.6	20.3	7.1	98.7	68.6	73.5	19.2
	Asansol	4.4	98.5	58.7	63.2	24.6	4.8	98.5	61.1	65.1	23.4
	Birbhum	5.2	98.7	64.1	68.9	22.1	4.8	98.5	66.3	71.0	20.8
	Malda	4.8	98.1	63.6	70.4	22.5	6.3	98.5	66.8	73.6	21.2
	Siliguri	3.5	97.7	49.6	51.9	25.4	2.9	97.3	53.6	57.5	24.8
	Darjeeling	4.3	99.8	53.3	55.3	28.0	3.7	99.8	57.1	62.6	26.9
Wind Speed (ms <sup>-1</sup> )	Digha	0.7	17.4	4.1	3.6	2.1	0.8	21.7	4.1	3.6	2.2
	Diamond Harbour	0.5	16.2	3.7	3.1	2	0.6	16.4	3.7	3.2	2.0
	Canning	0.5	15.3	3.6	3.1	1.9	0.6	16.9	3.6	3.1	2.0
	Baruipur	0.5	16.2	3.7	3.1	2.0	0.6	16.4	3.7	3.2	2.0
	Alipore (Kolkata)	0.5	12.8	3.3	2.8	1.7	0.6	14.6	3.3	2.9	1.7
	Dum Dum	0.5	12.8	3.3	2.8	1.7	0.6	14.6	3.3	2.9	1.7
	Kharagpur	0.6	14.5	3.4	3.0	1.6	0.7	15.9	3.4	3.0	1.7
	Cinsurah	0.5	12.8	3.3	2.8	1.7	0.6	14.6	3.3	2.9	1.7
	Krishnanagar	0.6	13.6	3.3	2.9	1.7	0.5	15.7	3.3	2.9	1.7
	Srinekatan	0.7	12.5	3.2	2.9	1.5	0.5	14.7	3.2	2.9	1.5
	Asansol	0.7	14.4	3.2	2.9	1.5	0.7	15.0	3.1	2.9	1.5
	Birbhum	0.7	12.5	3.2	2.9	1.5	0.5	14.7	3.2	2.9	1.5
	Malda	0.5	13.7	3.0	2.7	1.5	0.6	13.7	3.0	2.7	1.5
	Siliguri	0.6	14.0	2.8	2.4	1.4	0.5	12.5	2.7	2.4	1.4
	Darjeeling	0.3	3.1	1.0	1.0	0.3	0.3	2.5	1.0	1.0	0.3
Cloud Cover (Octa)	Digha	0.0	8.0	2.6	1.8	2.5	0.0	8.0	2.5	1.6	2.5
	Diamond Harbour	0.0	8.0	2.6	1.9	2.5	0.0	8.0	2.5	1.7	2.5
	Canning	0.0	8.0	2.6	1.9	2.5	0.0	8.0	2.5	1.8	2.5
	Baruipur	0.0	8.0	2.6	1.9	2.5	0.0	8.0	2.5	1.7	2.5
	Alipore (Kolkata)	0.0	8.0	2.5	1.7	2.5	0.0	8.0	2.4	1.5	2.5
	Dum Dum	0.0	8.0	2.5	1.7	2.5	0.0	8.0	2.4	1.5	2.5
	Kharagpur	0.0	8.0	2.5	1.6	2.6	0.0	8.0	2.4	1.3	2.5
	Cinsurah	0.0	8.0	2.5	1.7	2.5	0.0	8.0	2.4	1.5	2.5
	Krishnanagar	0.0	8.0	2.4	1.6	2.5	0.0	8.0	2.3	1.4	2.5
	Srinekatan	0.0	8.0	2.3	1.5	2.5	0.0	8.0	2.3	1.3	2.5
	Asansol	0.0	8.0	2.4	1.4	2.5	0.0	8.0	2.3	1.3	2.5
	Birbhum	0.0	8.0	2.3	1.5	2.5	0.0	8.0	2.3	1.3	2.5
	Malda	0.0	8.0	2.2	1.3	2.4	0.0	8.0	2.1	1.1	2.4
	Siliguri	0.0	8.0	2.2	1.2	2.4	0.0	8.0	2.1	1.1	2.4
	Darjeeling	0.0	8.0	3.0	2.7	2.6	0.0	8.0	2.9	2.4	2.6
PET (°C)	Digha	7.1	46.7	27.7	28.4	7.9	8.5	50.6	31.2	32.2	8.0
	Diamond Harbour	6.3	47.3	27.8	28.7	7.9	6.9	50.0	31.0	32.0	7.9

<b>Canning</b>	6.2	46.6	27.6	28.7	7.7	6.9	47.4	30.7	31.8	7.7
<b>Baruipur</b>	6.3	47.3	27.7	28.6	7.9	6.9	50.0	31.0	31.9	7.9
<b>Alipore (Kolkata)</b>	5.8	49.7	28.4	29.1	8.7	6.4	54.0	31.8	32.6	8.7
<b>Dum Dum</b>	5.4	49.8	28.2	29.0	9.0	5.9	54.1	31.6	32.4	9.0
<b>Kharagpur</b>	5.2	50.9	28.2	28.6	9.2	6.1	56.5	31.7	32.2	9.3
<b>Cinsurah</b>	2.3	44.8	23.7	24.8	7.8	2.6	48.6	27.2	28.2	7.8
<b>Krishnanagar</b>	1.8	45.3	23.6	24.6	8.1	2.5	48.1	27.2	28.3	8.2
<b>Srinekatan</b>	4.7	51.3	28.4	29.1	9.7	5.7	54.4	32.0	32.8	10.0
<b>Asansol</b>	4.5	50.0	27.5	27.9	9.8	4.1	55.4	31.2	31.7	10.2
<b>Birbhum</b>	4.8	51.4	28.4	29.0	9.8	5.7	55.0	32.0	32.7	9.9
<b>Malda</b>	4.5	50.2	27.9	28.9	10.0	4.9	52.9	31.2	32.6	10.2
<b>Siliguri</b>	3.8	49.0	27.0	28.1	10.3	3.7	52.3	30.1	31.6	10.5
<b>Darjeeling</b>	-6.8	30.4	13.3	14.6	8.8	-4.0	32.4	16.4	18.1	8.8