

Evaluation of Respiratory, Genotoxic and Cytotoxic Effects from Occupational Exposure to Typography Activities

Diana Linhares ^{1,*}, Joana Rocha ², Armindo Rodrigues ^{1,2}, Ricardo Camarinho ¹ and Patrícia Garcia ^{2,3}

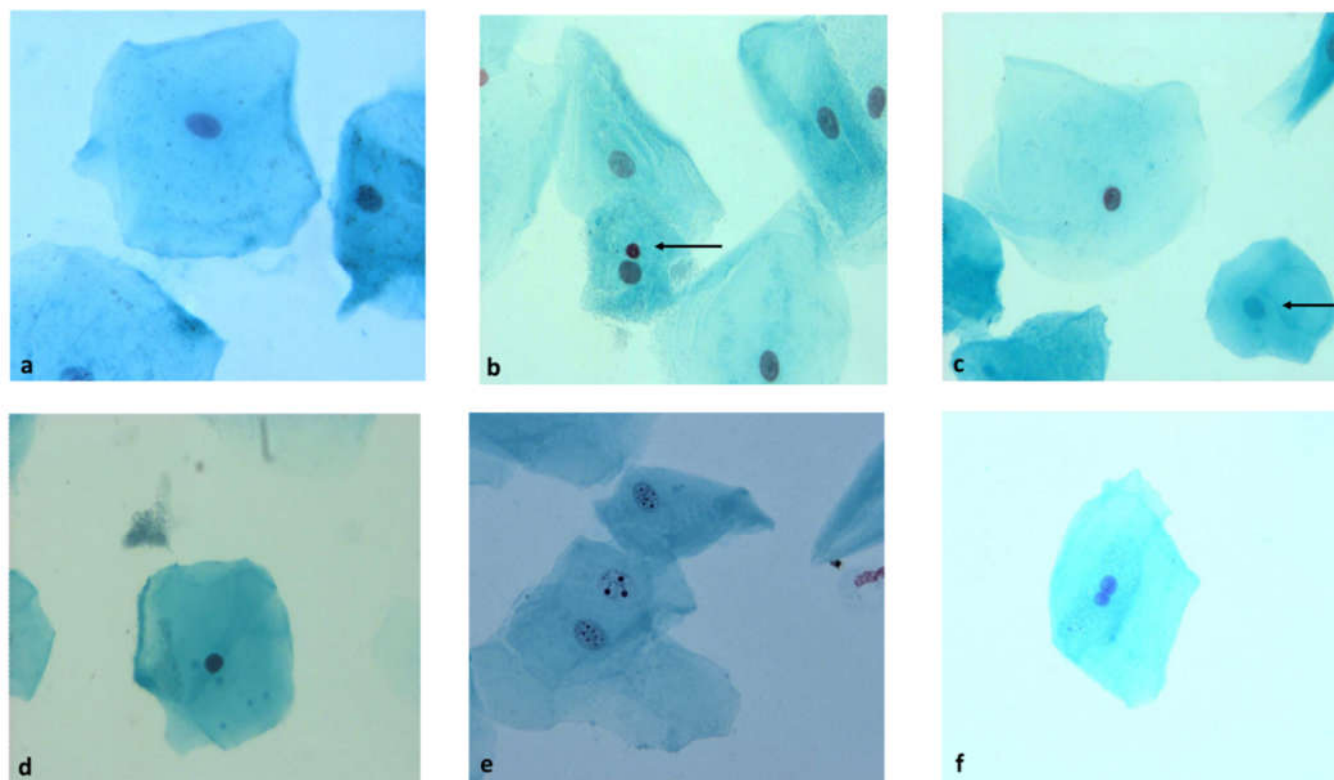


Figure S1. Representative photomicrographs of the epithelial cells stained with Feulgen (buccal micronucleus cytome assay): [a] differentiated cell, [b] differentiated cell with micronucleus (arrow), [c] karyolytic cell (arrow), [d] pyknotic cell, [e] karyorrhectic cell, [f] binucleated cell. Magnification of 400X.