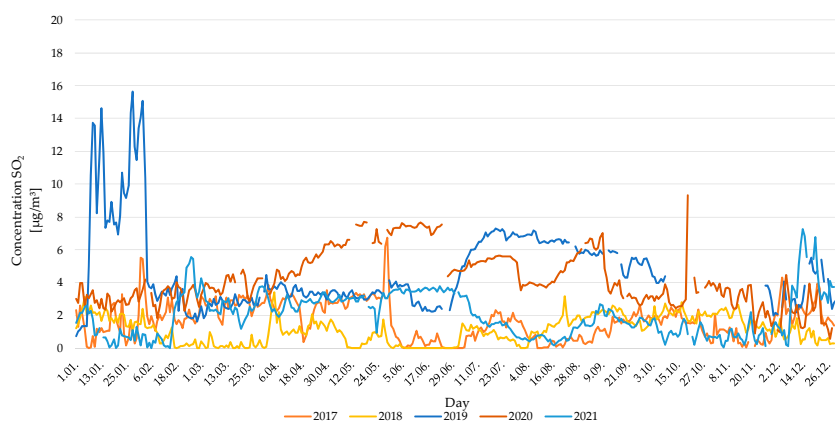
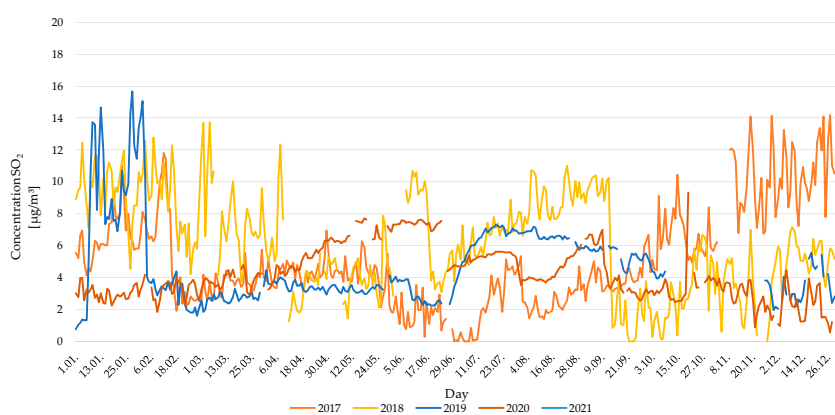


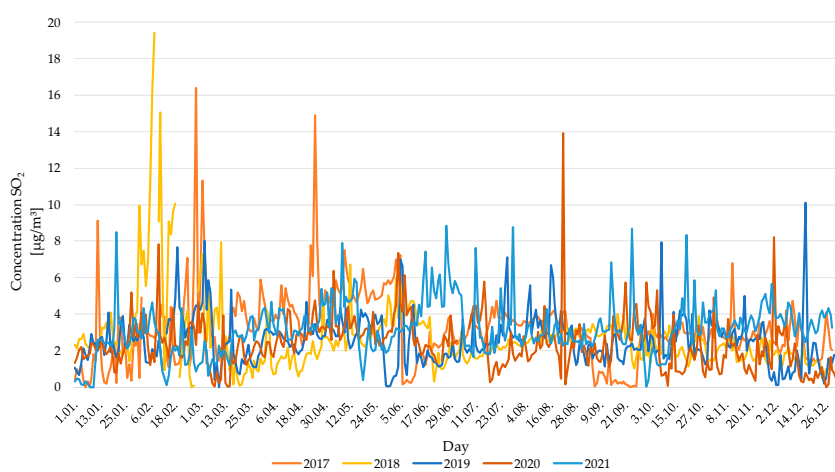
A



B



D



E

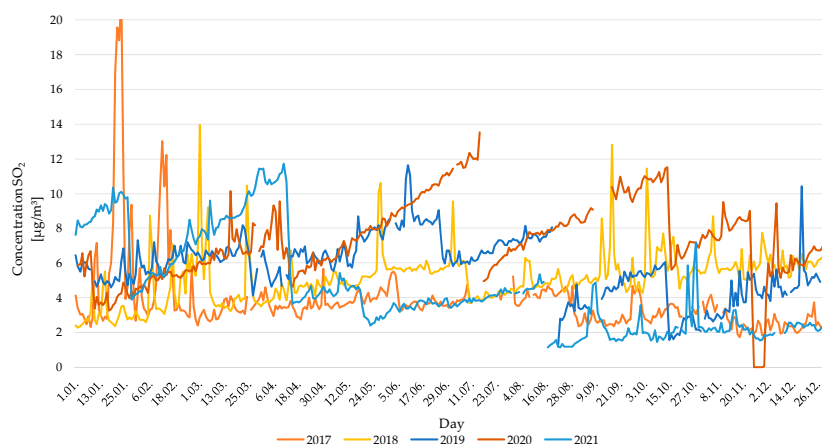


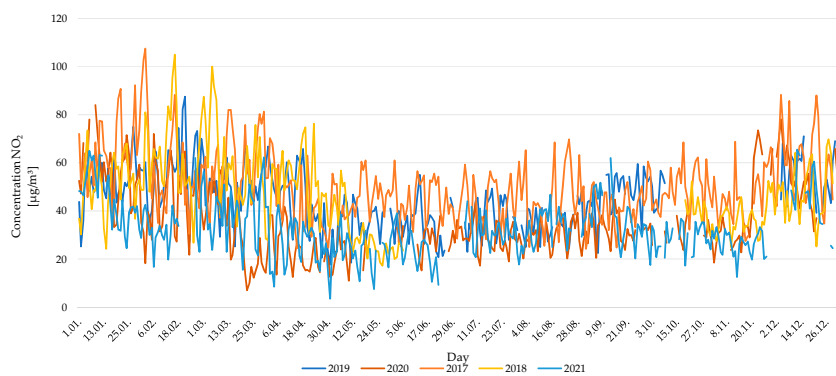
Figure S1: Average daily SO₂ concentrations at locations (A-E) between 2017 and 2021.

Table S1: Average, minimum, and maximum daily SO₂ concentrations (µg/m³) at all locations between 2017 and 2021.

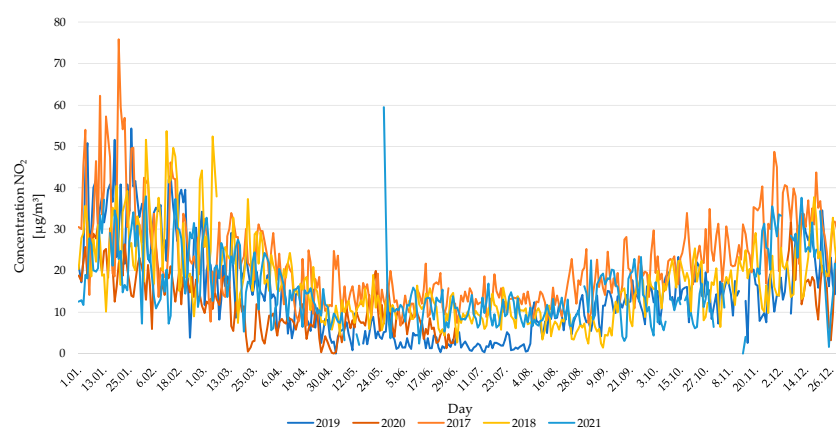
		A	B	D	E
2017	average	1.66±0.08	5.04±0.25	3.17±0.16	3.80±0.19
	min.	0.00±0.00	0.00±0.00	0.00±0.00	1.74±0.09
	max.	6.72±0.33	14.19±0.71	16.40±0.82	21.56±1.08
2018	average	1.11±0.05	6.13±0.31	2.67±0.13	5.10±0.25
	min.	0.00±0.00	0.00±0.00	0.00±0.00	2.25±0.11
	max.	3.39±0.17	13.75±0.69	19.45±0.97	13.95±0.70
2019	average	4.69±0.23	8.02±0.40	2.55±0.13	5.76±0.29
	min.	0.74±0.04	0.00±0.00	0.00±0.00	1.25±0.06
	max.	15.66±0.78	20.32±1.02	10.12±0.51	11.64±0.58
2020	average	4.23±0.21	10.23±0.51	2.37±0.12	7.27±0.36
	min.	0.57±0.03	0.00±0.00	0.00±0.00	0.00±0.00
	max.	9.33±0.47	20.47±1.02	13.93±0.70	13.53±0.68
2021	average	2.01±0.10	1.28±0.06	3.16±0.16	4.52±0.23
	min.	0.00±0.00	0.00±0.00	0.00±0.00	1.23±0.06
	max.	7.24±0.36	20.47±1.02	8.83±0.44	11.71±0.59

NO₂

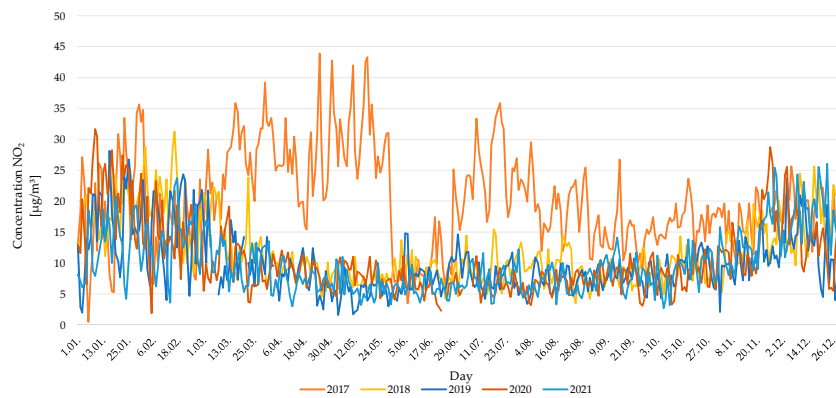
A



B



D



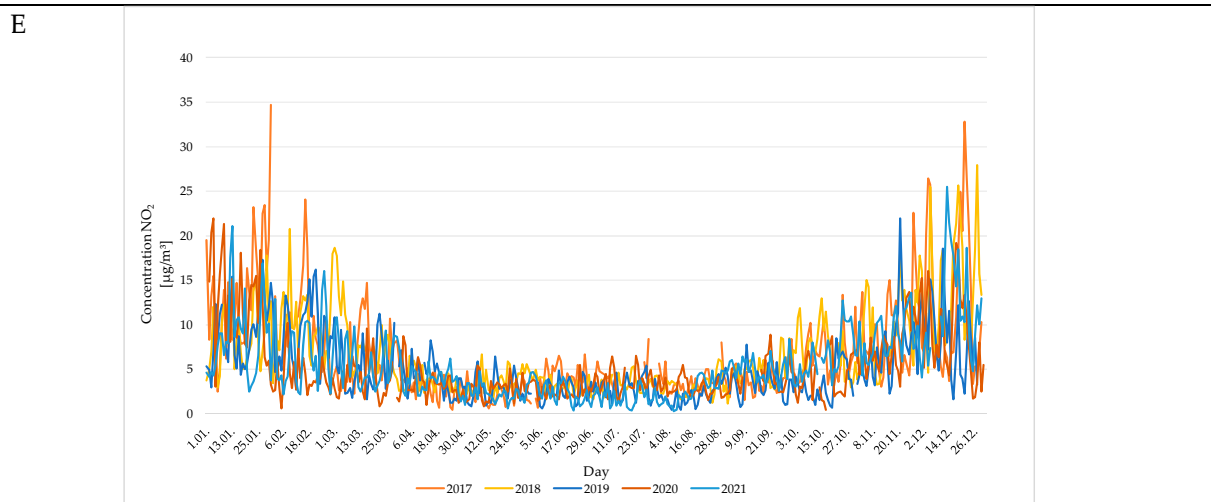
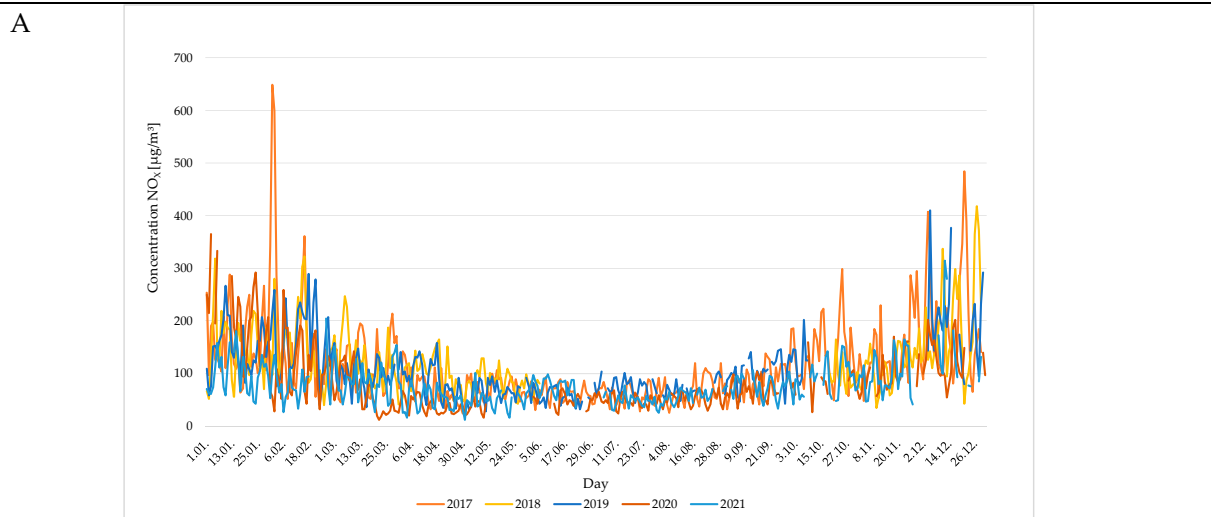


Figure S2: Average daily NO₂ concentrations at locations (A-E) between 2017 and 2021.

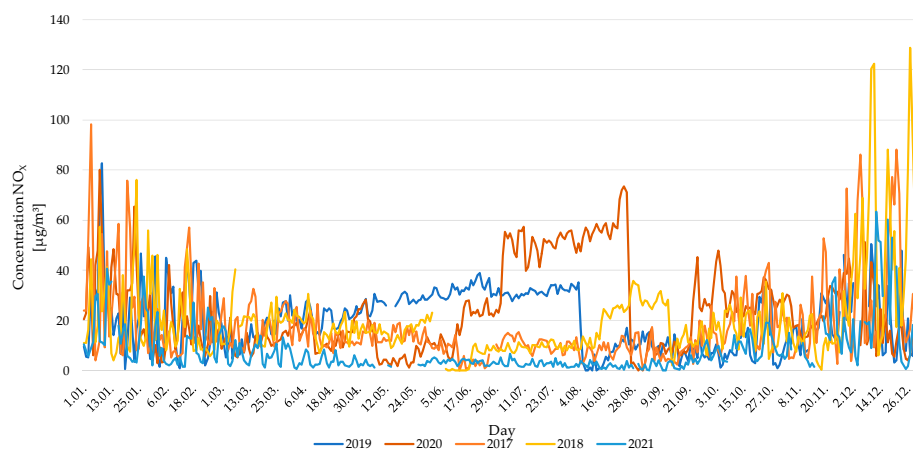
Table S2: Average, minimum, and maximum daily NO₂ concentrations (µg/m³) at all locations between 2017 and 2021.

		A	B	D	E
2017	average	50.23±2.51	21.99±1.10	20.02±1.00	6.63±0.33
	min.	24.18±1.21	6.69±0.33	0.54±0.03	0.44±0.02
	max.	107.36±5.37	75.85±3.79	43.94±2.20	34.65±1.73
2018	average	47.65±2.38	17.02±0.85	11.74±0.59	6.57±0.33
	min.	17.16±0.86	1.47±0.07	3.53±0.18	1.14±0.06
	max.	105.01±5.25	53.62±2.68	31.27±1.56	27.88±1.39
2019	average	44.87±2.24	14.42±0.72	10.01±0.50	5.05±0.25
	min.	17.77±0.89	0.01±0.00	1.61±0.08	0.45±0.02
	max.	87.51±4.38	54.25±2.71	28.15±1.41	21.91±1.10
2020	average	35.44±1.77	12.25±0.61	10.39±0.52	5.08±0.25
	min.	6.92±0.35	0.00±0.00	1.90±0.10	0.43±0.02
	max.	65.38±4.19	31.82±1.59	31.70±1.59	21.92±1.10
2021	average	32.54±1.63	15.75±0.79	9.86±0.49	5.42±0.27
	min.	24.35±1.22	0.00±0.00	2.71±0.14	0.31±0.02
	max.	65.38±3.27	59.38±2.97	26.04±1.30	25.49±1.27

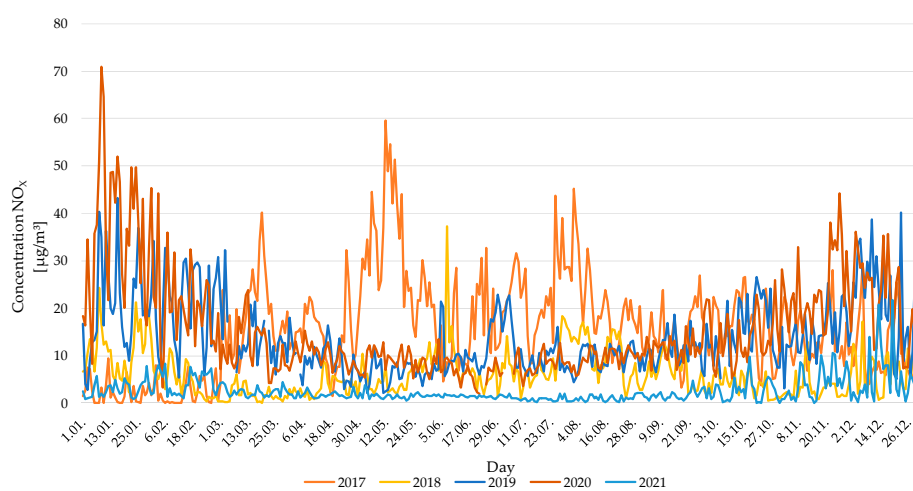
NO_x



B



D



E

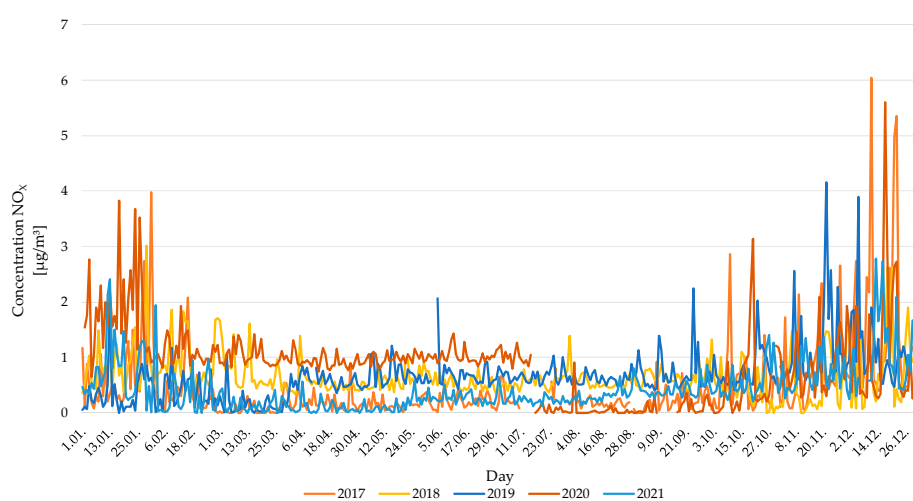


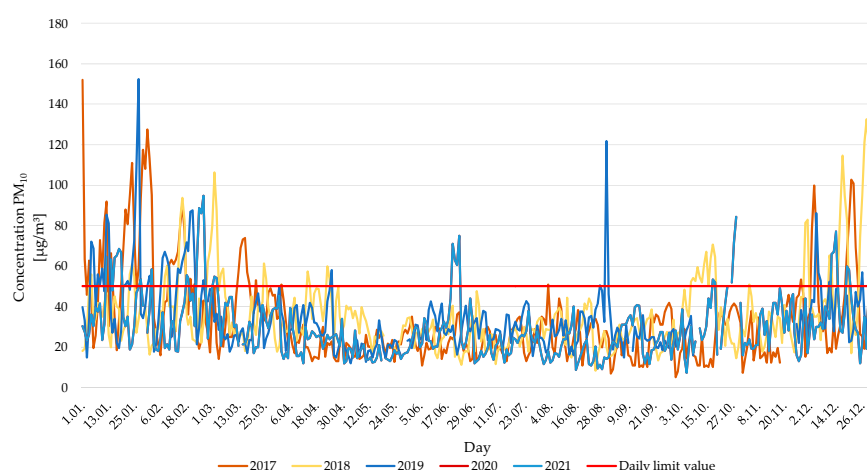
Figure S3: Average daily NO_x concentrations at locations (A-E) between 2017 and 2021.

Table S3: Average, minimum, and maximum daily NO_x concentrations (µg/m³) at all locations between 2017 and 2021.

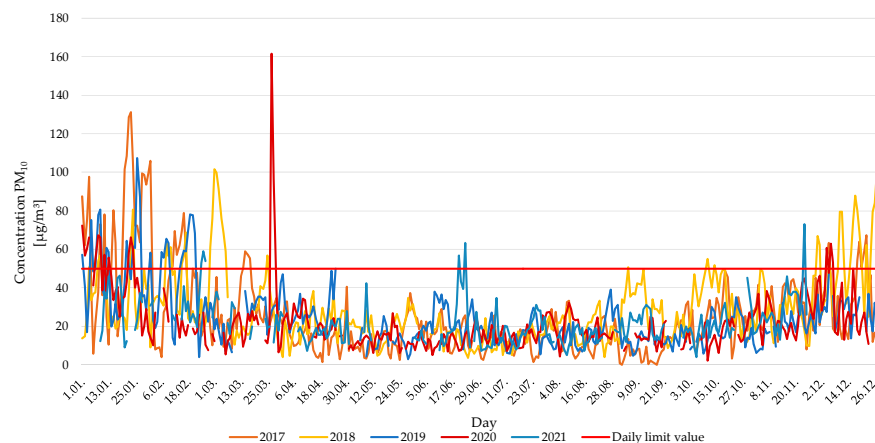
		A	B	D	E
2017	average	111.76±5.59	16.90±0.85	15.44±0.77	0.46±0.02
	min.	24.49±1.22	0.04±0.00	0.00±0.00	0.00±0.00
	max.	649.00±32.45	98.18±4.91	59.50±2.98	4.16±0.21
2018	average	127.07±6.35	19.41±0.97	6.08±0.30	0.65±0.03
	min.	34.37±1.72	0.00±0.00	0.12±0.01	0.00±0.00
	max.	418.31±20.92	128.79±6.44	37.29±1.86	5.61±0.28
2019	average	213.85±10.69	20.32±1.02	13.77±0.69	0.65±0.03
	min.	22.04±1.10	0.02±0.00	2.10±0.11	0.00±0.00
	max.	302.06±15.10	82.59±4.13	43.29±2.16	4.16±0.21
2020	average	81.66±4.08	23.59±1.18	15.31±0.77	0.86±0.04
	min.	11.96±0.60	0.00±0.00	1.99±0.10	0.00±0.00
	max.	452.93±22.65	80.09±4.00	70.83±3.54	5.61±0.28
2021	average	77.02±3.85	7.765±0.39	2.54±0.13	0.41±0.02
	min.	11.89±0.59	0.00±0.00	0.02±0.00	0.00±0.00
	max.	314.43±15.72	63.34±3.17	21.75±1.09	2.77±0.14

PM₁₀

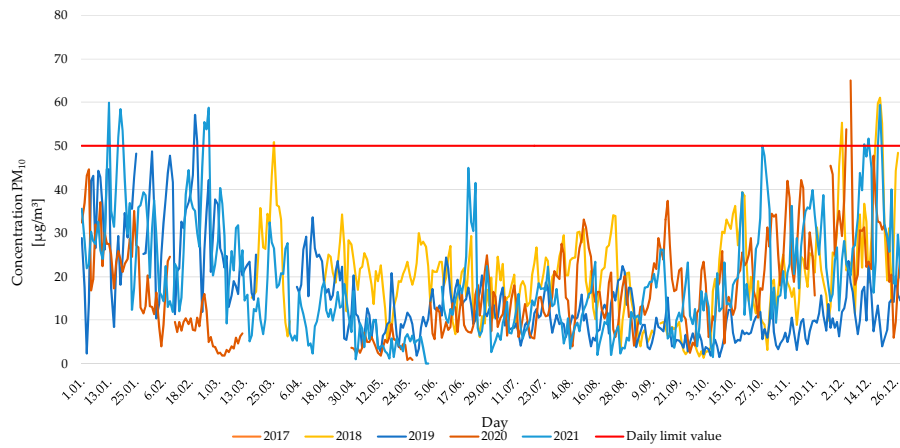
A



B



C



D

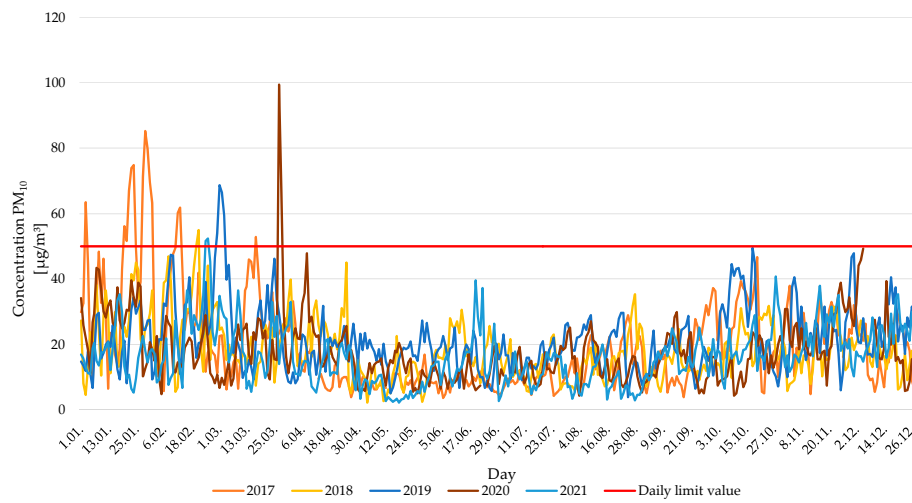


Figure S4: Average daily PM₁₀ concentrations at locations (A-E) between 2017 and 2021.

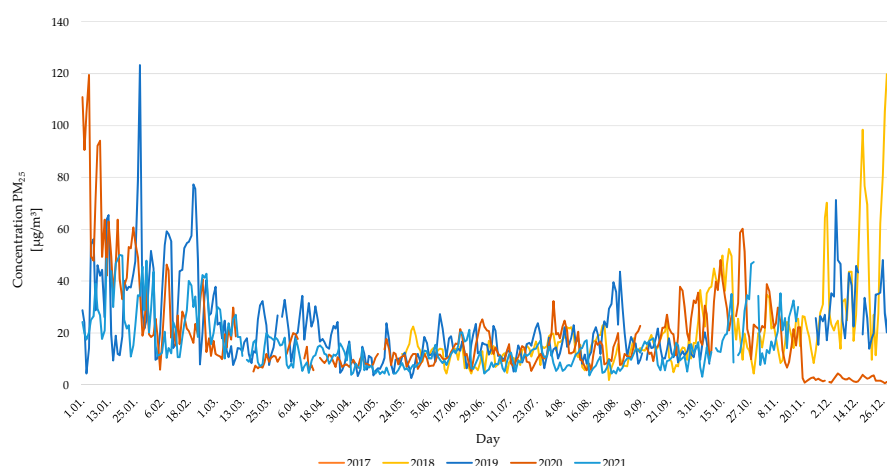
Table S4: Average, minimum, and maximum daily PM₁₀ concentrations (µg/m³) at all locations between 2017 and 2021.

		A	B	C	D
2017	average	32.72±1.64	25.25±1.26	N.A.	19.61±0.98
	min.	5.26±0.26	0.00±0.00	N.A.	3.00±0.15
	max.	152.13±7.61	131.10±6.56	N.A.	50.00±2.50
2018*	average	35.48±1.77	28.86±1.44	20.42±1.02	21.47±1.07
	min.	8.35±0.42	3.50±0.18	0.00±0.00	3.91±0.20
	max.	132.58±6.63	101.50±5.08	69.70±3.49	85.16±4.26
2019	average	34.11±1.71	24.07±1.20	14.95±0.75	18.00±0.89
	min.	11.87±0.59	2.88±0.14	1.51±0.04	2.23±0.11
	max.	152.57±7.63	107.22±5.36	57.06±2.85	55.01±2.75
2020	average	30.31±1.52	21.80±1.09	16.87±0.84	18.00±0.89
	min.	8.00±0.40	2.19±0.11	0.85±0.04	4.26±0.21
	max.	195.00±9.75	161.64±8.08	64.93±3.25	99.31±4.97
2021	average	29.06±1.45	21.61±1.08	18.94±0.95	16.00±0.81
	min.	7.18±0.36	4.00±0.20	0.00±0.00	2.17±0.11
	max.	94.82±4.74	73.00±3.65	59.94±3.00	52.43±2.62

* now hole year is taken into account.

PM_{2.5}

A



D

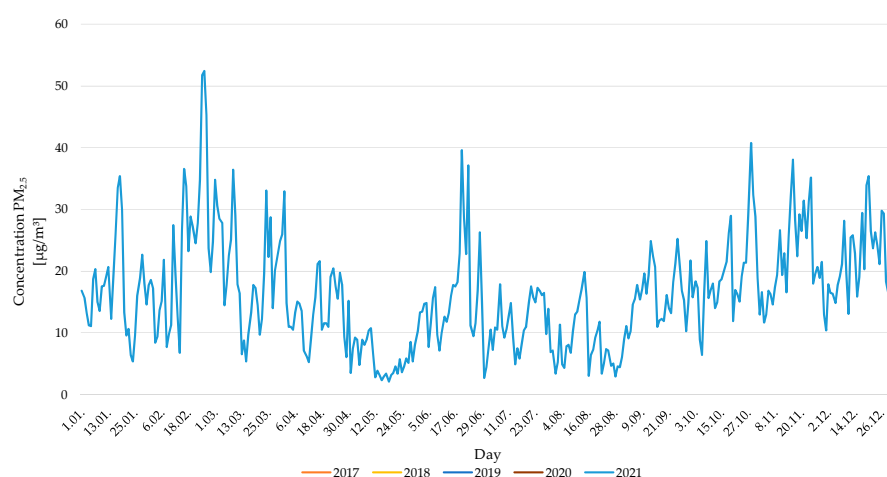


Figure S5: Average daily PM_{2.5} concentrations at locations (A-E) between 2017 and 2021.

Table S5: Average, minimum, and maximum daily PM_{2.5} concentrations (µg/m³) at all locations between 2017 and 2021.

		A	D
2017	average	0.00±0.00	N.A.
	min.	0.00±0.00	N.A.
	max.	0.00±0.00	N.A.
2018	average	20.91±1.05	N.A.
	min.	1.90±0.09	N.A.
	max.	119.78±5.99	N.A.
2019	average	22.00±1.09	N.A.
	min.	2.50±0.13	N.A.
	max.	123.386±6.17	N.A.
2020	average	18.00±0.90	N.A.
	min.	0.57±0.03	N.A.
	max.	119.56±5.98	N.A.
2021	average	15.00±0.76	15.47±0.77
	min.	3.00±0.15	2.03±0.10
	max.	50.08±2.50	48.43±2.42

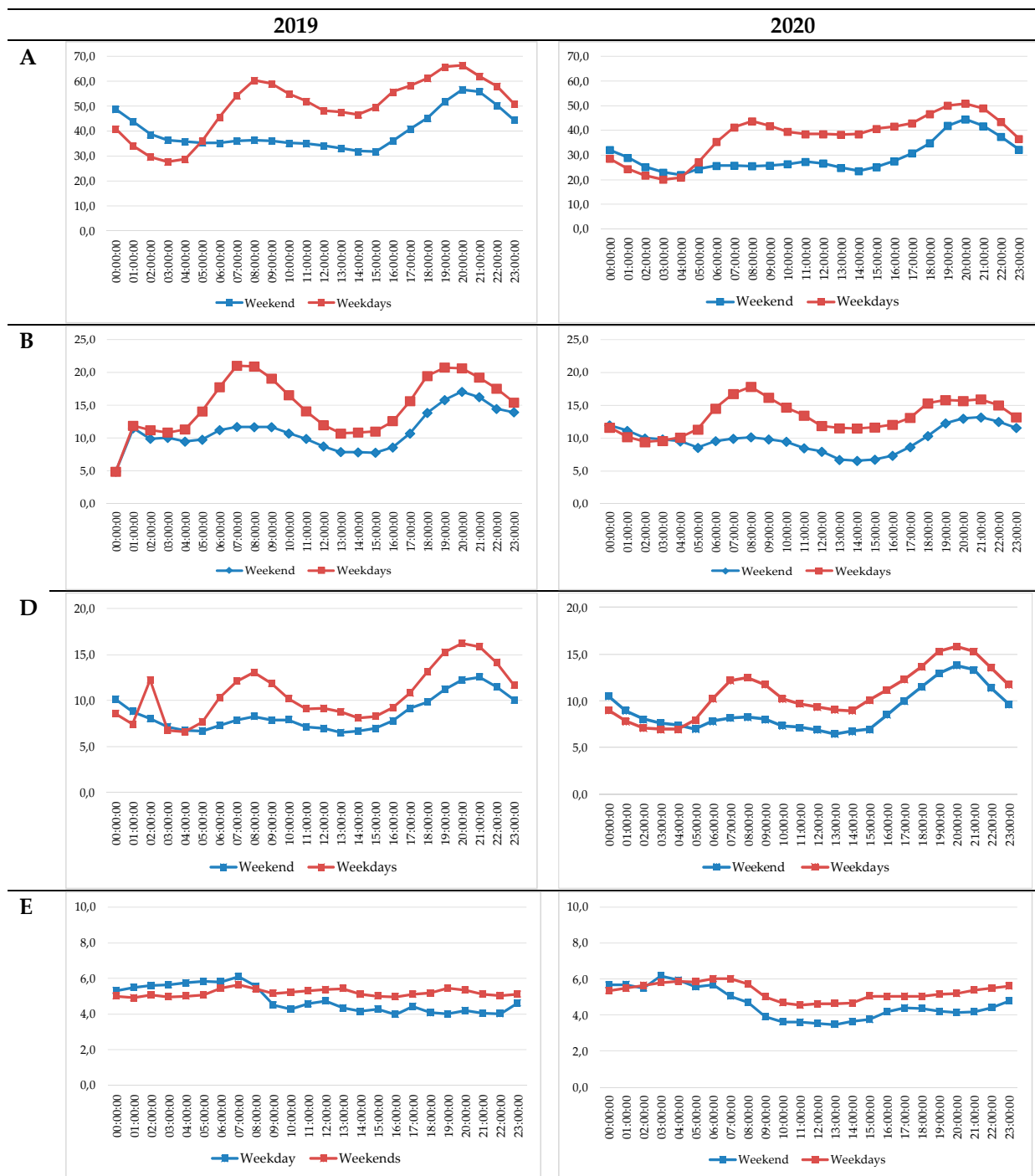


Figure S6: Daily course of the average hourly NO₂ concentration levels at measuring points between 2019 and 2020.

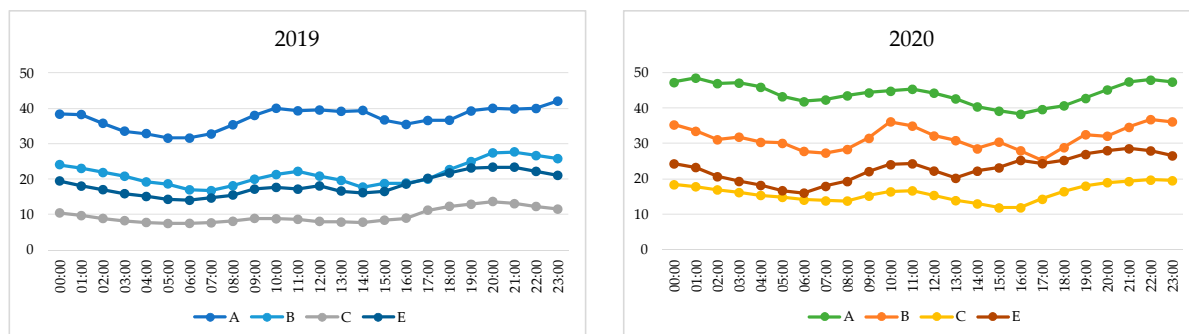
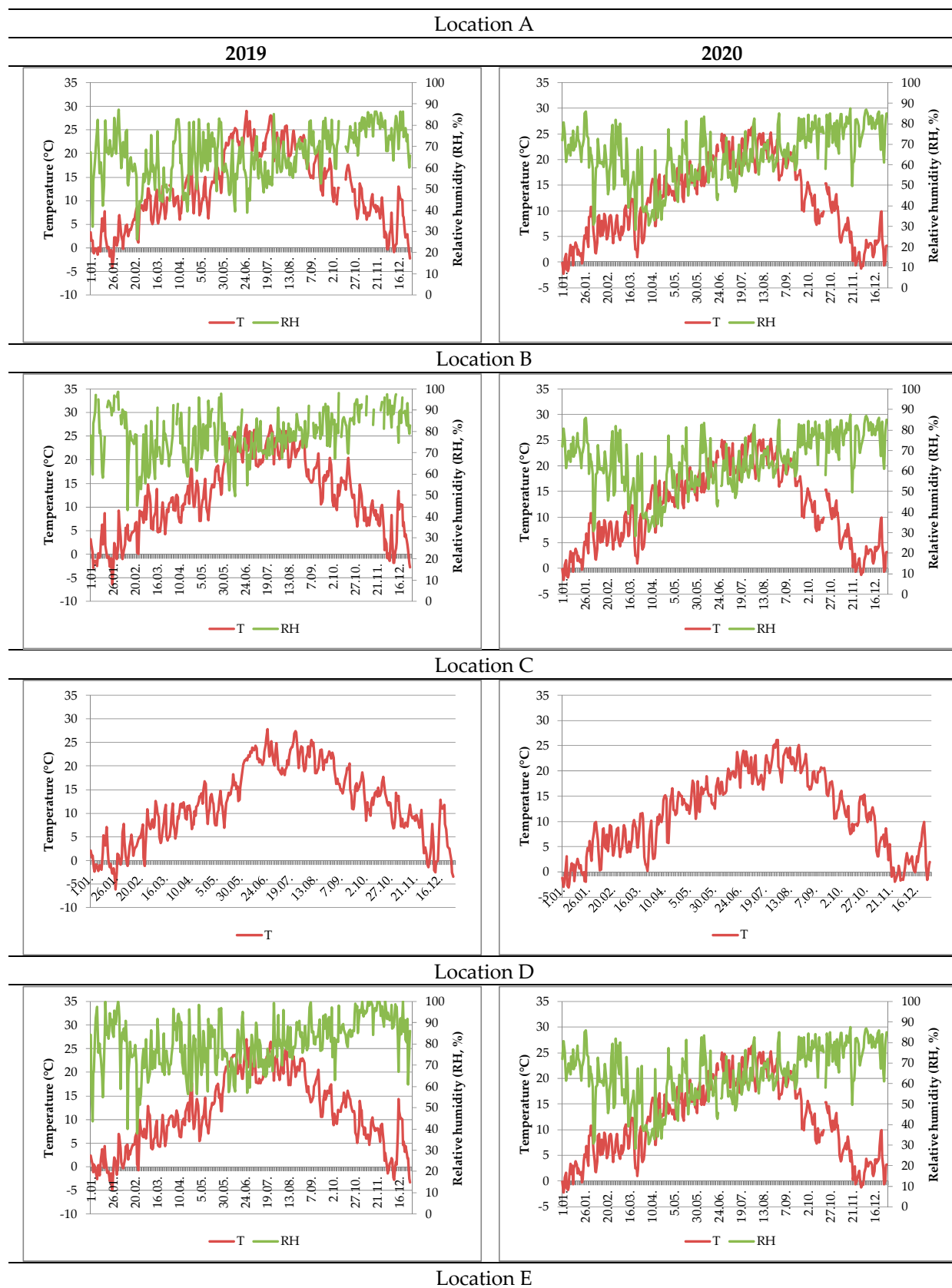


Figure S7: Daily course of the average hourly PM₁₀ concentration levels during the heating season 2019 and 2020.



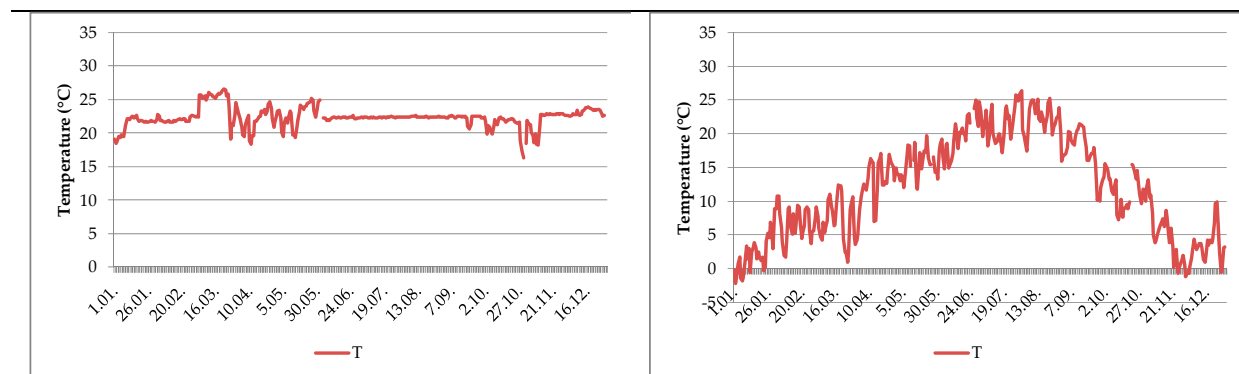


Figure S8: Plots of temperature and RH at locations (A-E) between 2019 and 2020.