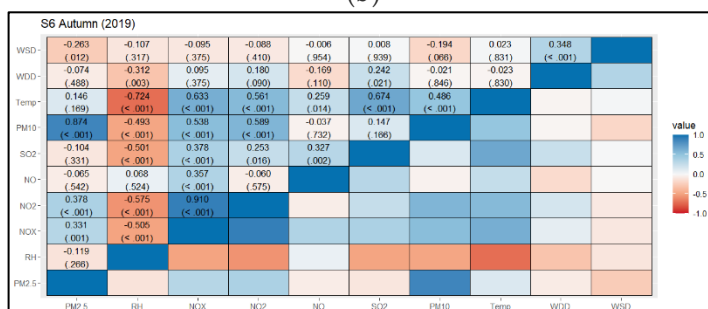


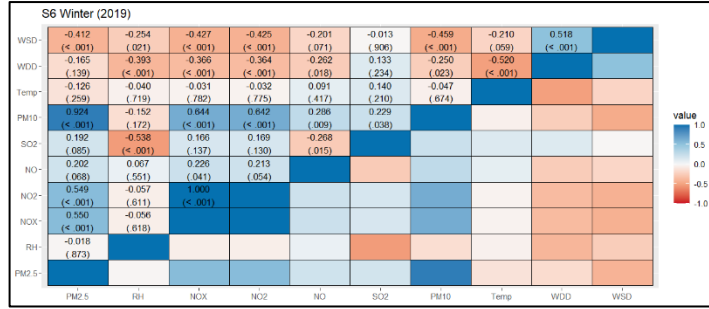
Paraskevi Begou ¹, Vasilios Evagelopoulou ^{2,*} and Nikolaos D. Charisiou ²

* Correspondence: vevagelopoulos@uowm.gr; Tel.: +30-(24610)-56619

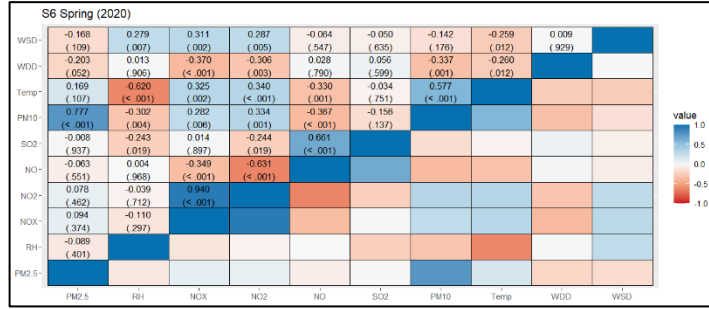
absolute Value of the Correlation Coefficient.	Interpretation
1.0	Perfect correlation
$0.9 \leq r < 1.0$	Very strong correlation
$0.7 \leq r < 0.9$	Strong correlation
$0.3 \leq r < 0.7$	Moderate correlation
$0 < r < 0.3$	Weak correlation
0	No correlation



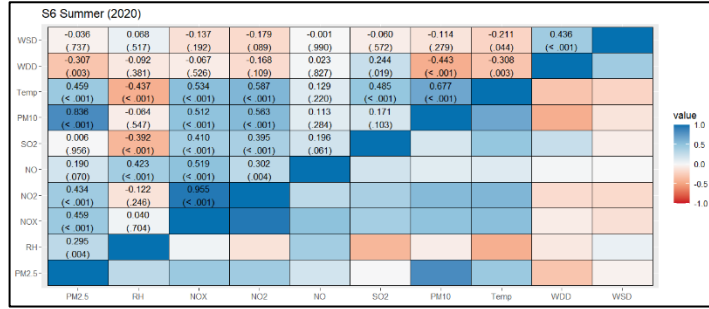
(c)



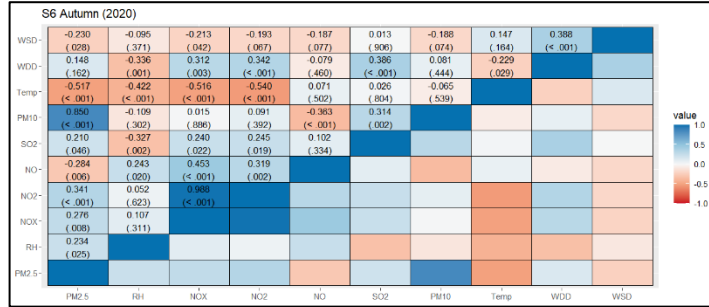
(d)



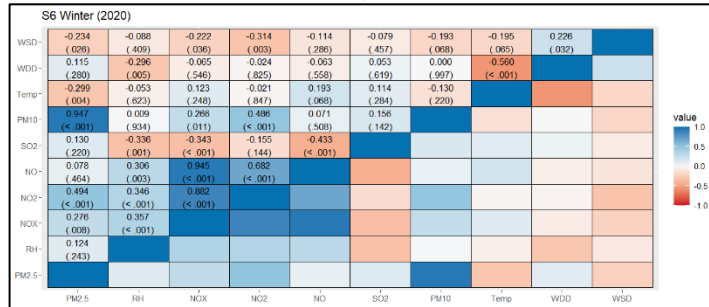
(e)



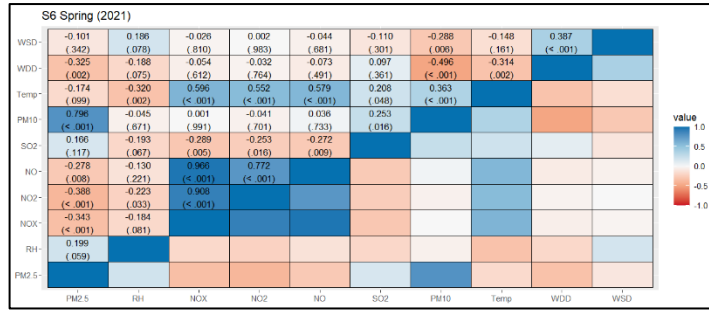
(f)



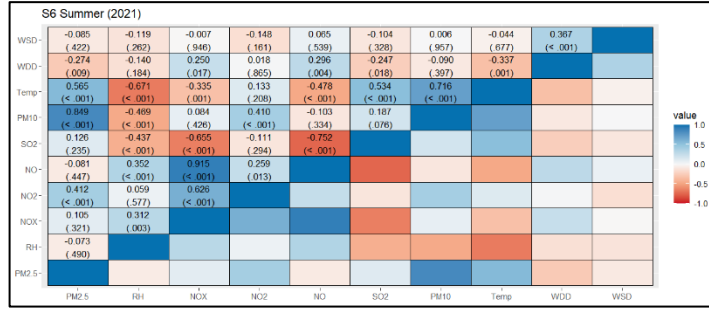
(g)



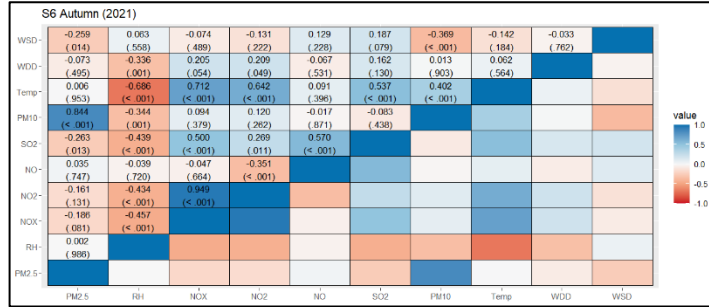
(h)



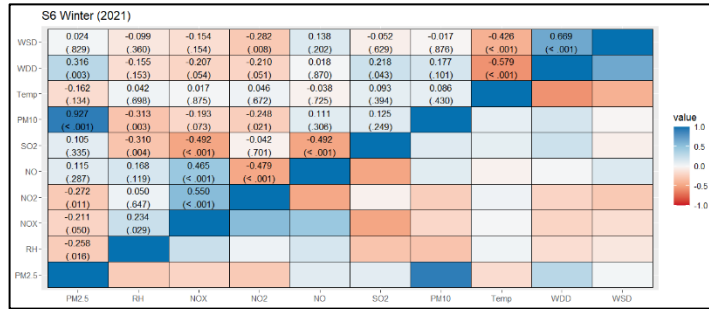
(i)



(j)

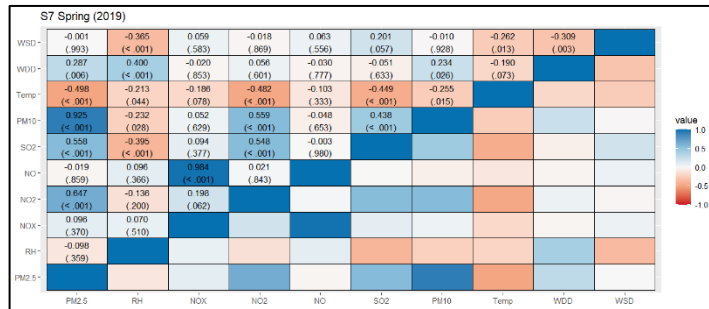


(k)

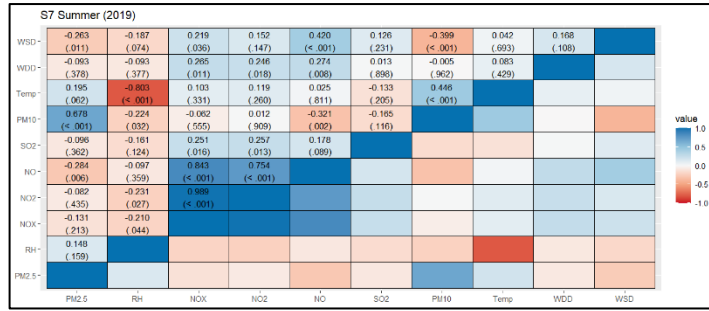


(l)

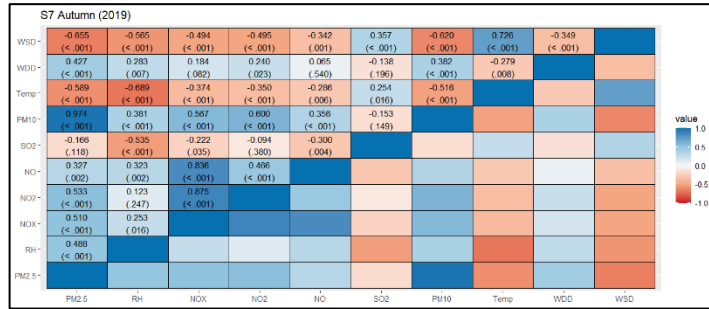
Figure S1. Pearson correlation matrices between air pollutants concentrations and meteorological parameters for the AQMS S6 for all seasons for the years 2019-2021(a-l).



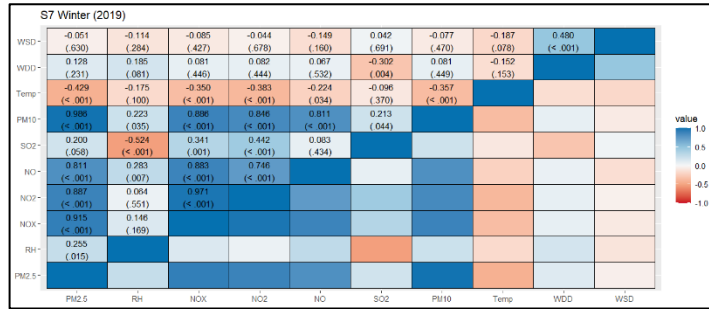
(a)



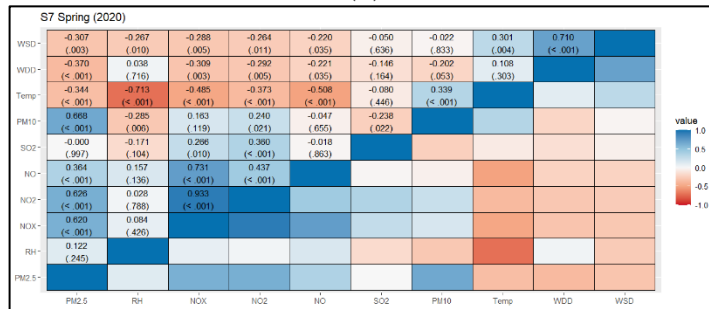
(b)



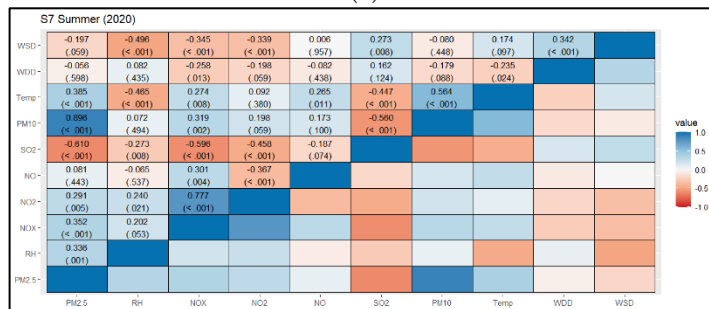
(c)



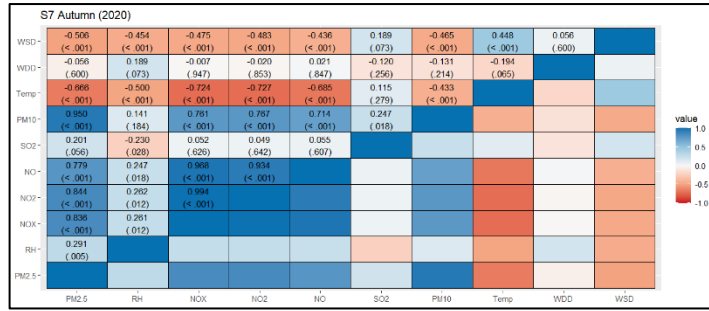
(d)



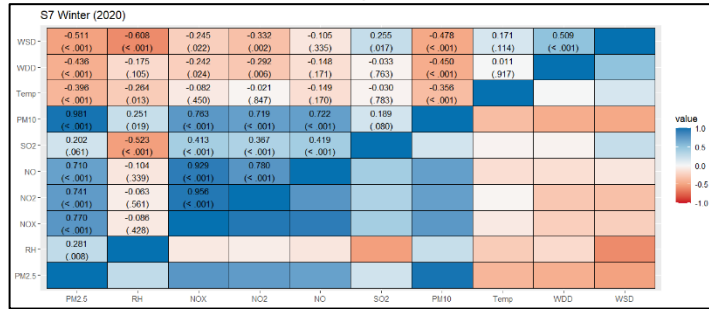
(e)



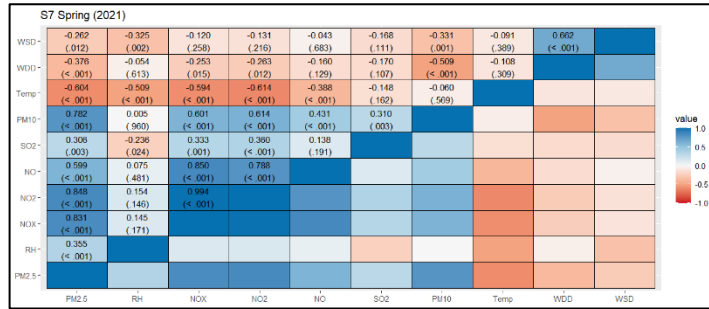
(f)



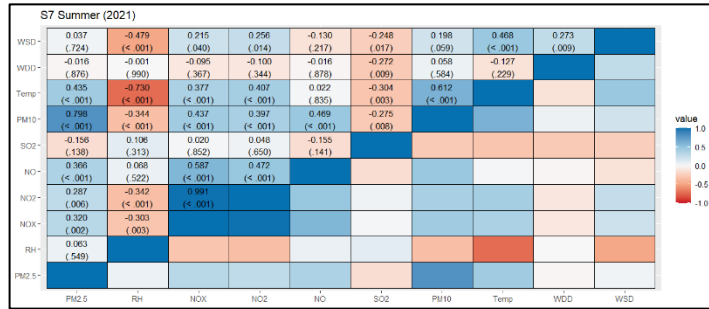
(g)



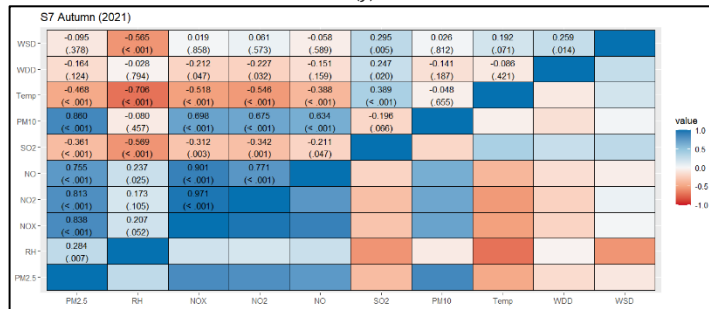
(h)



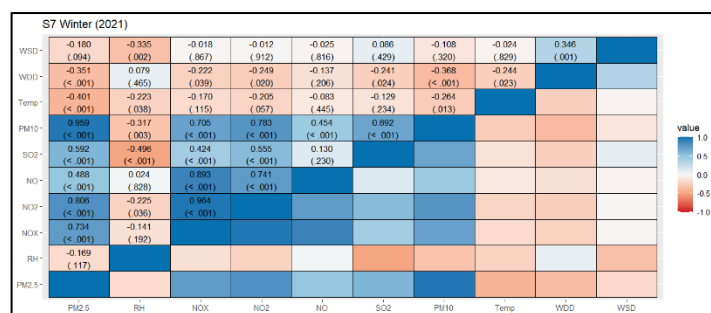
(i)



(j)



(k)



(1)

Figure S2. Pearson correlation matrices between air pollutants concentrations and meteorological parameters for the AQMS S7 for all seasons for the years 2019-2021 (a–l).

References

53. Ratner, B. The correlation coefficient: Its values range between +1/-1, or do they? *J Target Meas Anal Mark*, 2009, 17, 139–142. <https://doi.org/10.1057/jt.2009.5>
54. Schober, P.; Boer, C.; Schwarte, L. A. Correlation Coefficients: Appropriate Use and Interpretation. *ANESTH. ANALG.*, 2018, 126, 1763–1768. <https://doi.org/10.1213/ANE.0000000000002864>
55. Profillidis V.A., Botzoris G.N. *Statistical Methods for Transport Demand Modeling*. Elsevier: Amsterdam, Netherlands, 2019; pp. 163–224. <https://doi.org/10.1016/B978-0-12-811513-8.00005-4>