

Supplementary Materials: Quantifying the Impact of Multiple Factors on Air Quality Model Simulation Biases Using Machine Learning

Chunying Fan ¹, Ruilin Wang ^{2,*}, Ge Song ¹, Mengfan Teng ¹, Maolin Zhang ¹, Huangchuan Liu ¹, Zhujun Li ¹, Siwei Li ^{1,3,*} and Jia Xing ⁴

¹ Hubei Key Laboratory of Quantitative Remote Sensing of Land and Atmosphere, School of Remote Sensing and Information Engineering, Wuhan University, Wuhan 430079, China; fancy99@whu.edu.cn (C.F.); gesong@whu.edu.cn (G.S.); tengmengfan@whu.edu.cn (M.T.); maolinzhang@whu.edu.cn (M.Z.); 2019302130218@whu.edu.cn (H.L.); 2019302130094@whu.edu.cn (Z.L.)

² Institute of Software, Chinese Academy of Sciences, Beijing 100864, China

³ Perception and Effectiveness Assessment for Carbon-neutrality Efforts, Engineering Research Center of Ministry of Education, Institute for Carbon Neutrality, Wuhan University, Wuhan 430072, China

⁴ Department of Civil and Environmental Engineering, The University of Tennessee, Knoxville, TN 37996, USA; jxing3@utk.edu

* Correspondence: wangruilin@iscas.ac.cn (R.W.); siwei.li@whu.edu.cn (S.L.)

Table S1. The parameter setting of WRF.

Parameter	Setting
Terrain	Modis_15s
Grid resolution	27 km × 27km
Temporal resolution	6 h
Microphysics	Morrison scheme
Radiation	RRTMG scheme
Surface layer	Pleim–Xu scheme
Land surface	Pleim–Xu scheme
Planetary boundary layer	ACM2 Pleim scheme
Cumulus parameterization	Kain–Fritsch scheme
Vertical layer	1, 0.995, 0.99, 0.98, 0.96, 0.94, 0.91, 0.86, 0.8, 0.74, 0.65, 0.55, 0.4, 0.2, 0

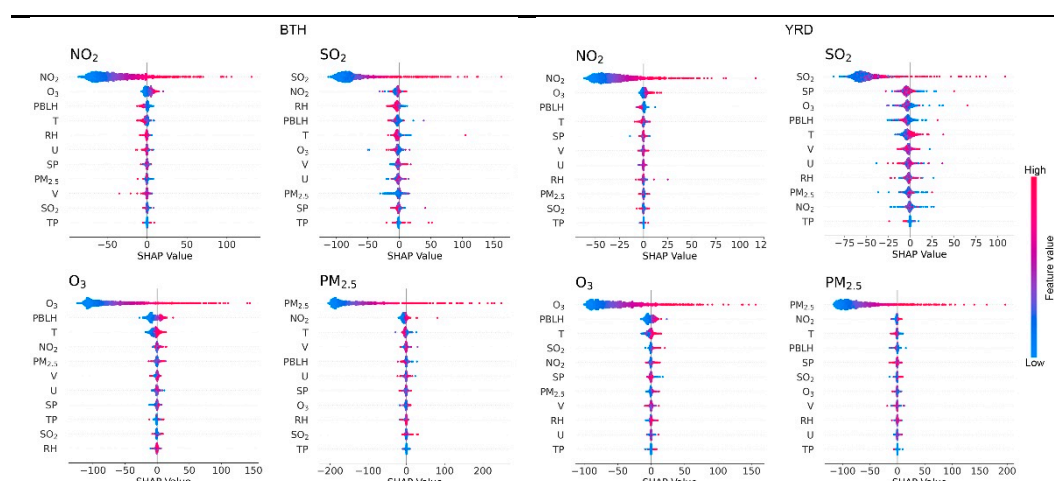


Figure S1. Local impact by covariate values.