

Supplementary Materials:

Lilan Zhang ^{1,2,*}, Xiaohong Chen ³, Bensheng Huang ^{1,*}, Jie Liu ¹, Daoyi Chen ², Liangxiong Chen ¹, Rouyi Lai ⁴ and Yanhui Zheng ⁵

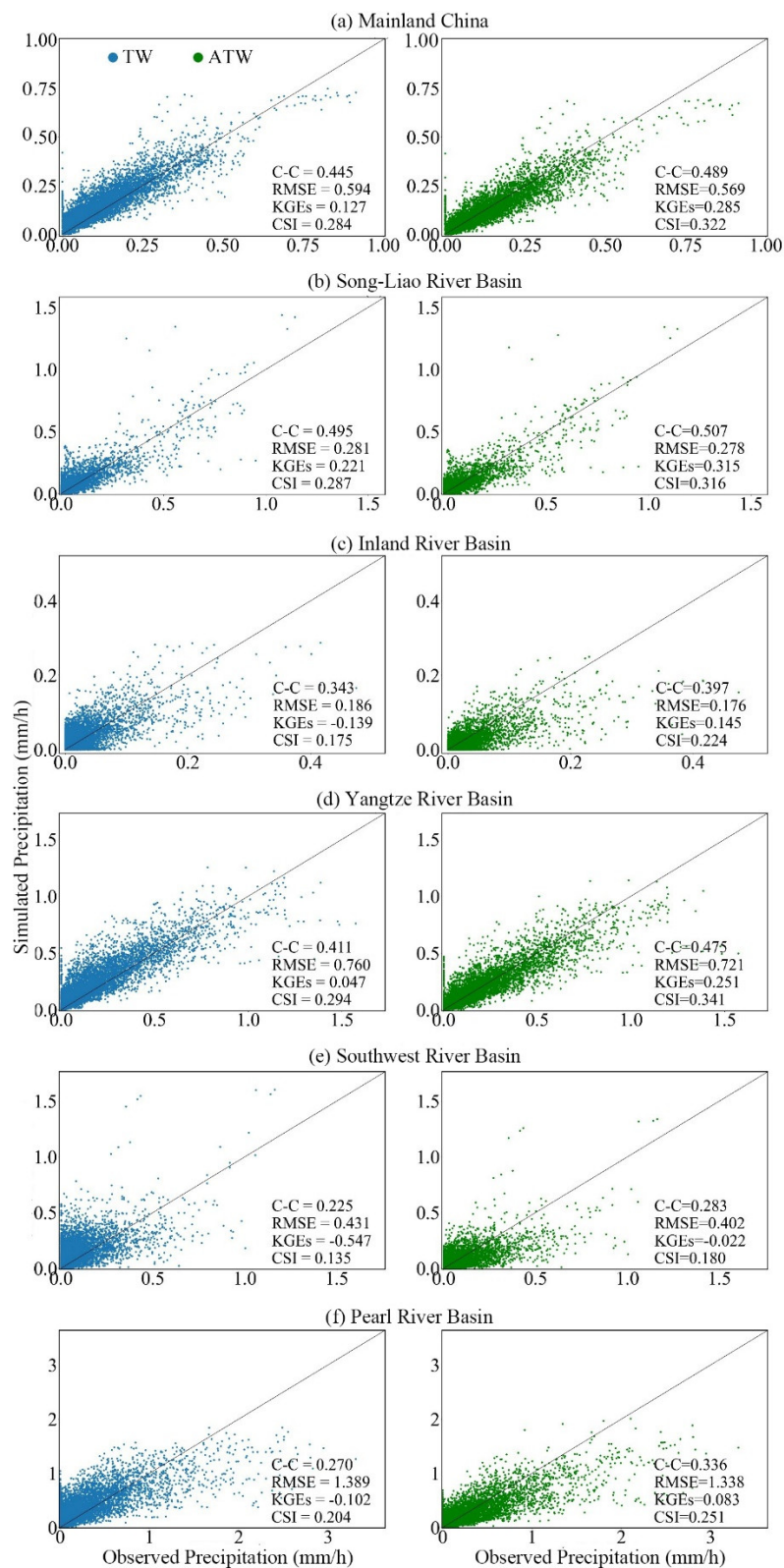


Figure S1. Scatter plots of TW (left) and ATW (right) against observed rainfall during the spring seasons of 2012–2015.

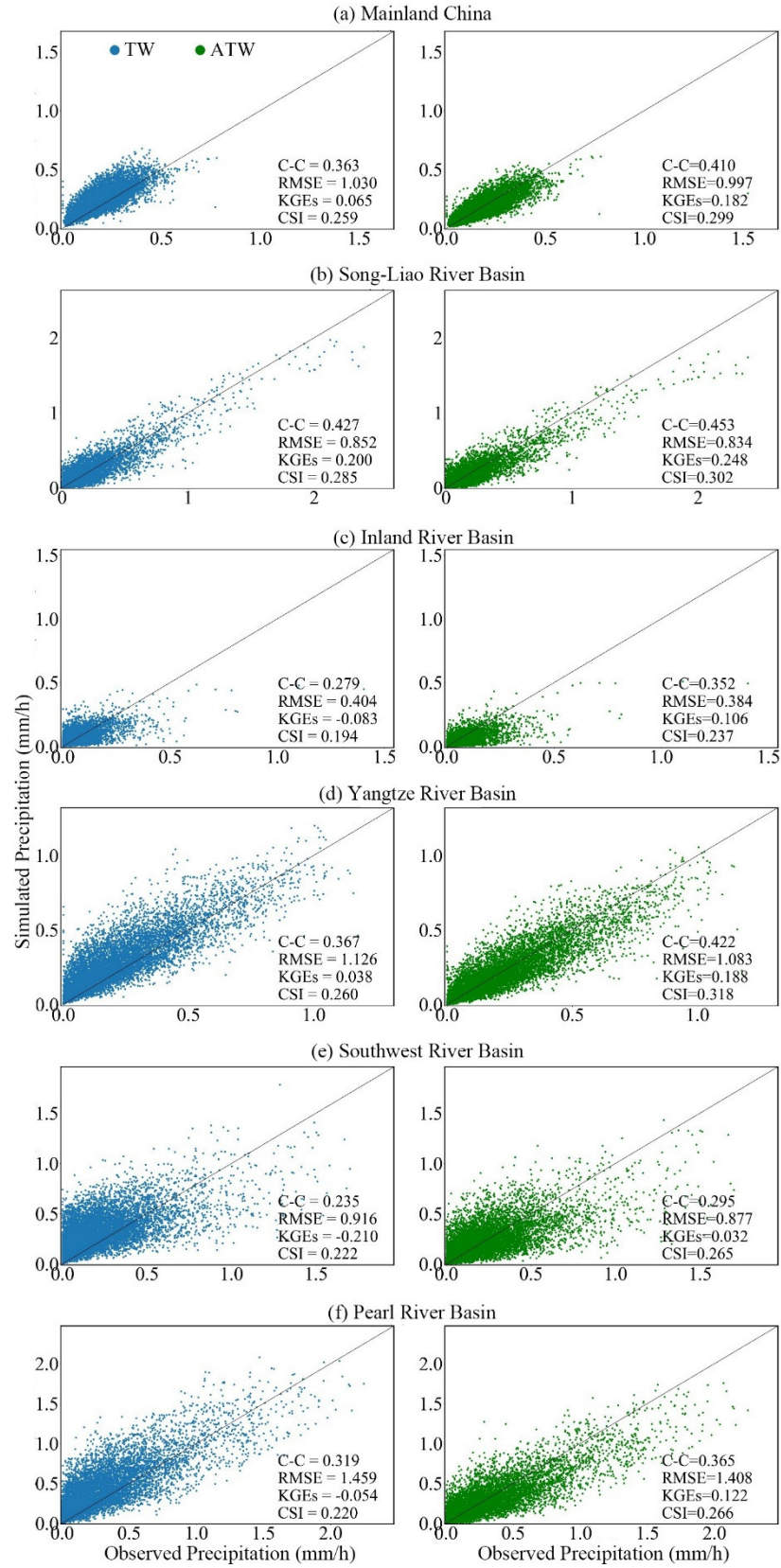


Figure S2. Scatter plots of TW (left) and ATW (right) against observed rainfall during the summer seasons of 2012–2015.

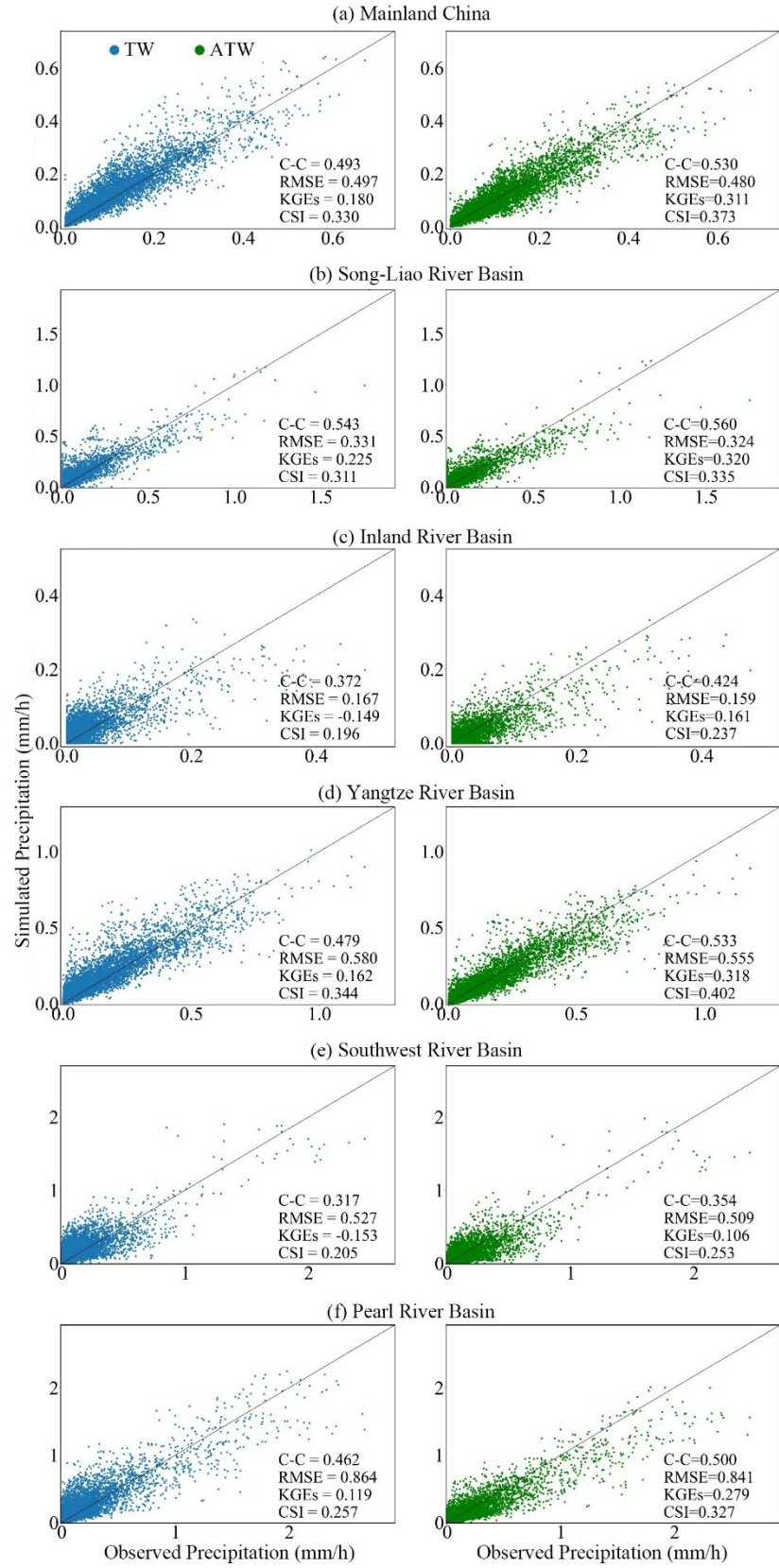


Figure S3. Scatter plots of TW (**left**) and ATW (**right**) against observed rainfall during the autumn seasons of 2012–2015.

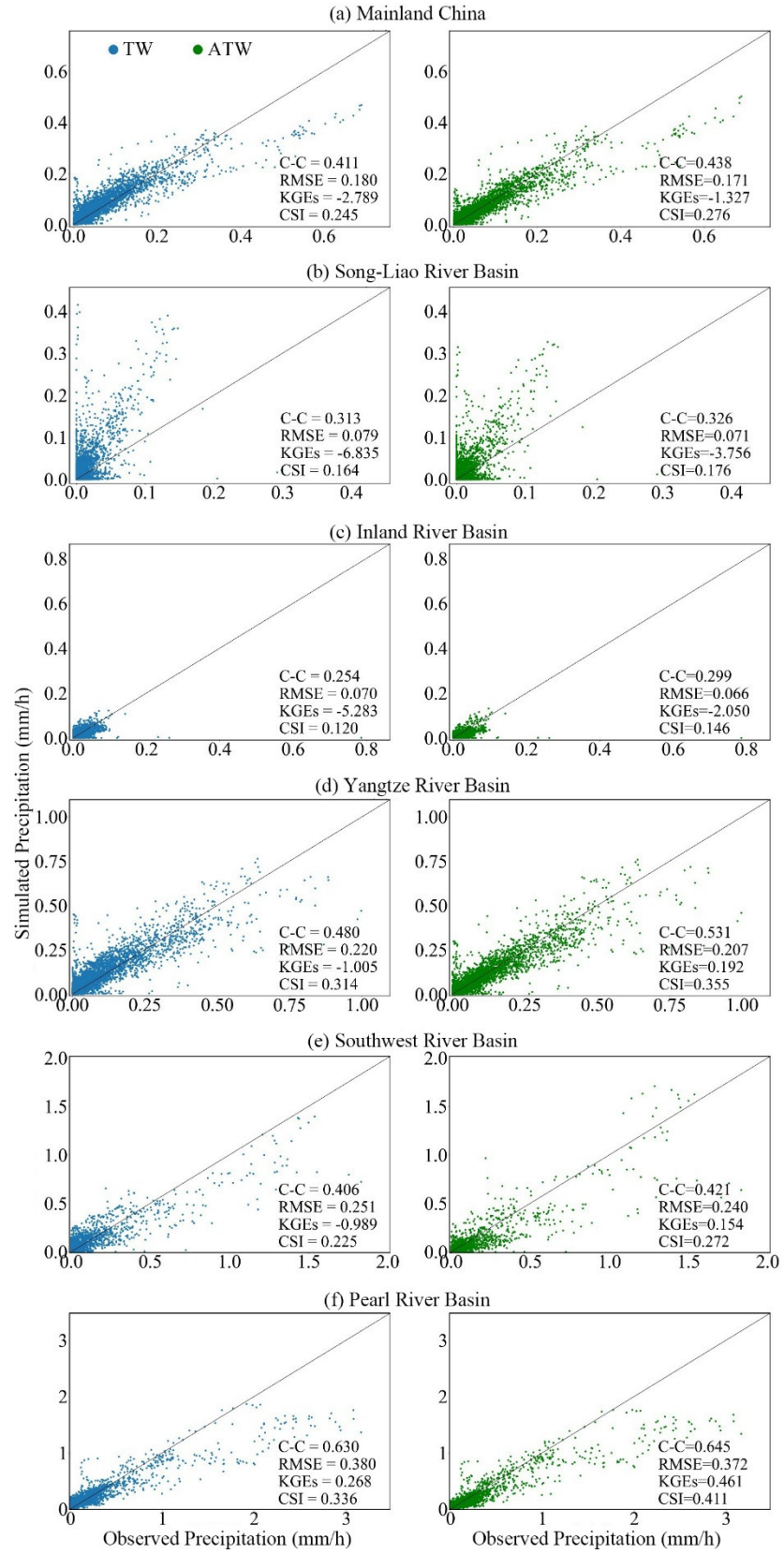


Figure S4. Scatter plots of TW (left) and ATW (right) against observed rainfall during the winter seasons of 2012–2015.