

# Impact of the No-driving day Program on air quality in a high-altitude tropical city: the case of the Toluca Valley Metropolitan Area

Agustin Garcia<sup>1\*</sup>, Victor Almanza<sup>1</sup>, Dzoara Tejeda-Holstein<sup>2</sup>, and Mauro Alvarado-Castillo<sup>2</sup>,

1 Universidad Nacional Autónoma de México

2 LT Consulting

\*Correspondence: agustin@atmosfera.unam.mx;

## Supplement

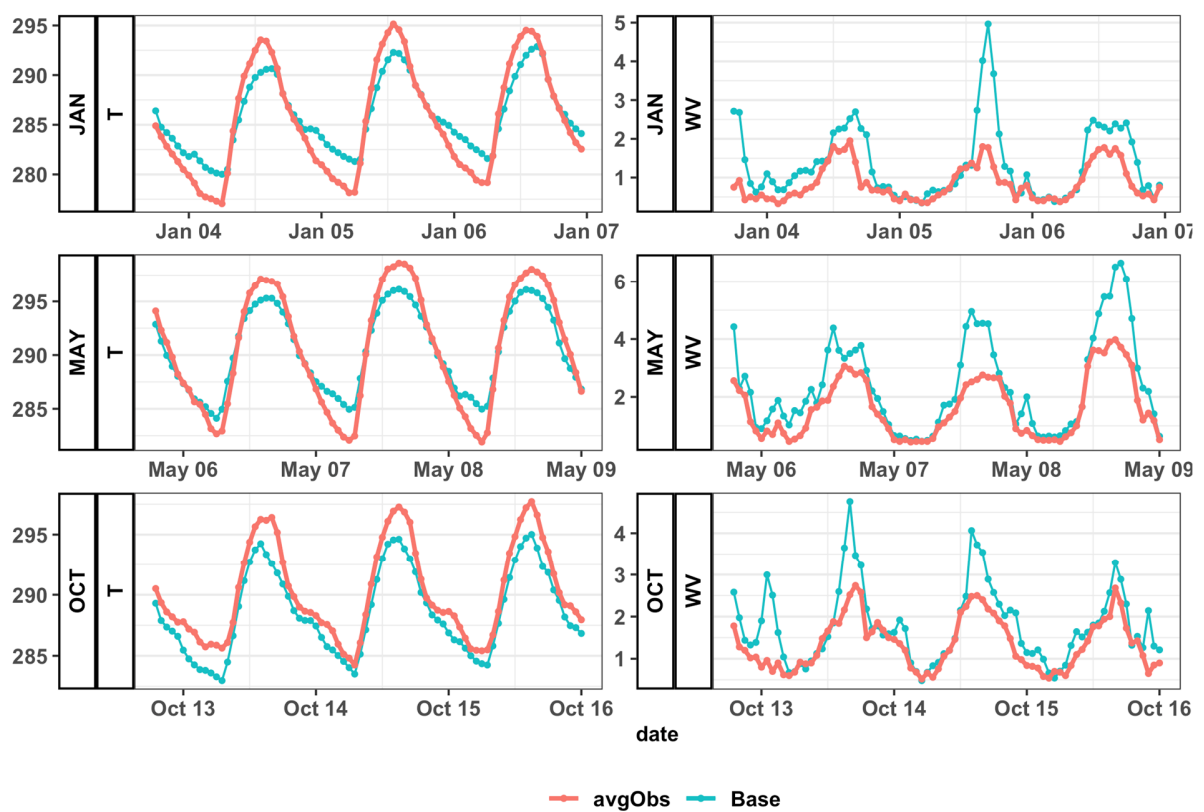


Figure S1. Average observed (red) and modeled (blue) surface temperature and wind velocity time series for the three modeling periods for the base case scenario. Units are in °C and m/s and each panel has a different scale.

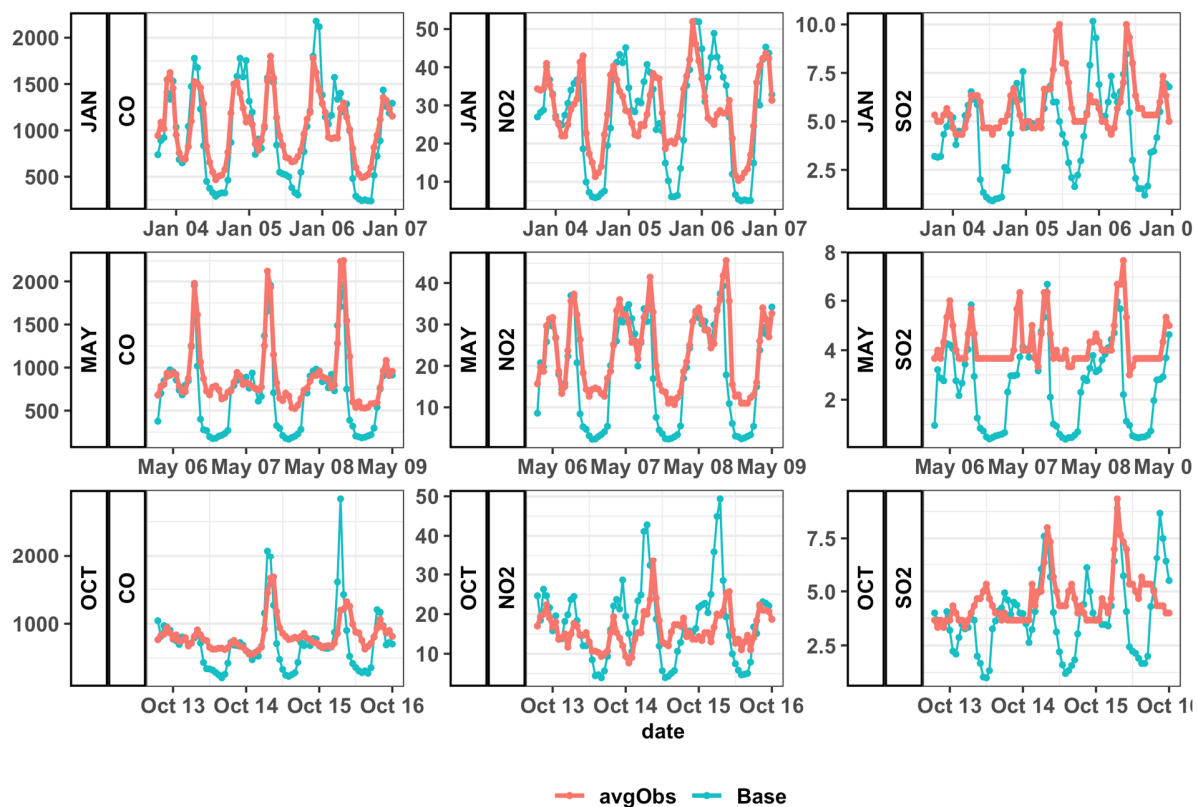


Figure S2. Average observed (red) and modeled (blue) time series for the three modeling periods for the base case scenario. First column, CO; second column, NO<sub>2</sub>; third column, SO<sub>2</sub>. Units are in ppm and ppb and each panel has a different scale.