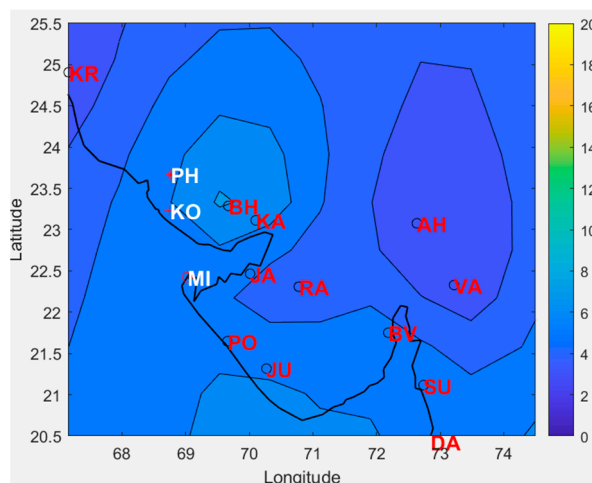
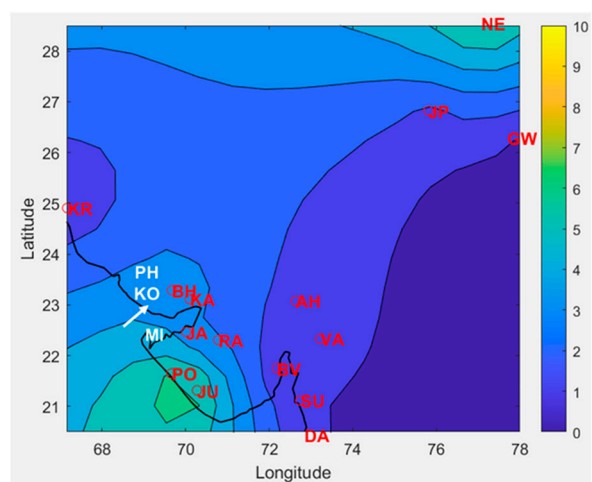


# Evolution of Dew and Rain Water Resources in Gujarat (India) between 2005 and 2021

Rupal Budhbhatti <sup>1</sup>, Anil K. Roy <sup>2</sup>, Marc Muselli <sup>3,4</sup> and Daniel Beysens <sup>4,5,\*</sup>



**Figure S1.** Kriging map of yearly dew yields (mm) in 2004-2005 (October to April). The letters refer to the stations (see Tables 1 & 2).



**Figure S2.** Kriging map of yearly dew yields (mm) in 2005-2006 (October to April). The city of Suthari is located with an arrow. The letters refer to the stations (see Tables 1 & 2).