

Table S1: *Aedes albopictus* presence absence data collected in Montenegro (2001 – 2017)

No	Lat.	Long.	Year	P/A
1	42.33786	19.22156	2001	1
2	42.33786	19.22156	2002	1
3	42.36678	19.22586	2002	0
4	42.41825	19.21036	2002	1
5	42.42261	19.21631	2002	0
6	42.44775	19.24739	2002	1
7	42.15528	19.03350	2003	1
8	42.11739	19.07875	2003	1
9	41.93058	19.21858	2003	1
10	41.92506	19.23733	2003	1
11	42.44775	19.24739	2004	1
12	42.43703	19.26064	2004	1
13	42.44117	19.25369	2004	1
14	42.39994	18.69575	2004	1
15	42.73542	19.75847	2005	1
16	42.29375	18.84372	2005	1
17	42.45475	18.66000	2006	1
18	42.45556	18.74700	2006	1
19	42.45819	19.23219	2006	1
20	42.09644	19.11342	2006	1
21	42.22425	19.11267	2007	1
22	42.33336	19.24167	2007	1
23	42.41750	19.24611	2007	1
24	42.43397	19.25086	2007	1
25	42.44833	19.25817	2007	1
26	42.45514	19.26875	2007	1
27	42.44786	19.21158	2007	1
28	42.42472	18.77039	2007	1
29	42.44672	18.75264	2007	1
30	42.44181	18.75342	2007	1
31	42.46653	18.76639	2007	1
32	42.40083	18.69531	2007	1
33	42.39283	18.66939	2007	1
34	42.22425	19.11267	2008	1
35	42.33336	19.24167	2008	1
36	42.41750	19.24611	2008	1

37	42.43397	19.25086	2008	1
38	42.44833	19.25817	2008	1
39	42.45514	19.26875	2008	1
40	42.44786	19.21158	2008	1
41	42.42472	18.77039	2008	1
42	42.44672	18.75264	2008	1
43	42.44181	18.75342	2008	1
44	42.46653	18.76639	2008	1
45	42.40083	18.69531	2008	1
46	42.39283	18.66939	2008	1
47	42.22425	19.11267	2009	1
48	42.33336	19.24167	2009	1
49	42.41750	19.24611	2009	1
50	42.43397	19.25086	2009	1
51	42.44833	19.25817	2009	1
52	42.45514	19.26875	2009	1
53	42.44786	19.21158	2009	1
54	42.42472	18.77039	2009	1
55	42.44672	18.75264	2009	1
56	42.44181	18.75342	2009	1
57	42.46653	18.76639	2009	1
58	42.40083	18.69531	2009	1
59	42.39283	18.66939	2009	1
60	42.22425	19.11267	2010	1
61	42.33336	19.24167	2010	1
62	42.41750	19.24611	2010	1
63	42.43397	19.25086	2010	1
64	42.44833	19.25817	2010	1
65	42.45514	19.26875	2010	1
66	42.44786	19.21158	2010	1
67	42.42472	18.77039	2010	1
68	42.44672	18.75264	2010	1
69	42.44181	18.75342	2010	1
70	42.46653	18.76639	2010	1
71	42.40083	18.69531	2010	1
72	42.39283	18.66939	2010	1
73	42.22425	19.11267	2011	1
74	42.33336	19.24167	2011	1
75	42.41750	19.24611	2011	1
76	42.43397	19.25086	2011	1
77	42.44833	19.25817	2011	1
78	42.45514	19.26875	2011	1
79	42.44786	19.21158	2011	1

80	42.42472	18.77039	2011	1
81	42.44672	18.75264	2011	1
82	42.44181	18.75342	2011	1
83	42.46653	18.76639	2011	1
84	42.40083	18.69531	2011	1
85	42.39283	18.66939	2011	1
86	41.90947	19.26069	2012	1
87	41.92789	19.23125	2012	1
88	41.98617	19.15822	2012	1
89	42.01697	19.14825	2012	1
90	42.08503	19.12150	2012	1
91	42.10042	19.09164	2012	1
92	42.15103	19.03450	2012	1
93	42.15272	19.01164	2012	1
94	42.19644	18.97606	2012	1
95	42.21083	18.94283	2012	1
96	42.21528	18.92350	2012	1
97	42.26994	18.89303	2012	1
98	42.28186	18.88028	2012	1
99	42.28375	18.87567	2012	1
100	42.29553	18.84464	2012	1
101	42.29553	18.84464	2012	1
102	42.30725	18.80467	2012	1
103	42.36711	18.75422	2012	1
104	42.35197	18.70536	2012	1
105	42.39022	18.71433	2012	1
106	42.39986	18.69567	2012	1
107	42.40519	18.66503	2012	1
108	42.40856	18.65147	2012	1
109	42.41433	18.63486	2012	1
110	42.41431	18.57289	2012	1
111	42.40556	18.58711	2012	1
112	42.39400	18.59761	2012	1
113	42.38772	18.61078	2012	1
114	42.39461	18.66986	2012	1
115	42.45953	18.68239	2012	1
116	42.43783	18.69861	2012	1
117	42.43628	18.76386	2012	1
118	42.36661	18.72822	2012	1
119	42.48375	18.73408	2012	1
120	42.51597	18.69308	2012	1
121	42.48458	18.67131	2012	1
122	42.45475	18.66003	2012	1

123	42.44950	18.57364	2012	1
124	42.45183	18.55439	2012	1
125	42.46233	18.51325	2012	1
126	42.48131	18.45647	2012	1
127	42.45053	19.22586	2013	1
128	42.45803	19.23208	2013	1
129	42.44797	19.25092	2013	1
130	42.43983	19.25408	2013	1
131	42.45511	19.26914	2013	1
132	42.46736	19.29028	2013	1
133	42.44342	19.28006	2013	1
134	42.42436	19.27414	2013	1
135	42.42983	19.26675	2013	1
136	42.41744	19.24619	2013	1
137	42.43403	19.24719	2013	1
138	42.43725	19.26108	2013	1
139	42.43969	19.26461	2013	1
140	42.43575	19.29497	2013	1
141	42.42067	19.30656	2013	1
142	42.41017	19.33094	2013	1
143	42.38575	19.32536	2013	0
144	42.37225	19.32811	2013	1
145	42.35506	19.33056	2013	1
146	42.31400	19.33717	2013	1
147	42.32100	19.31717	2013	1
148	42.32664	19.29592	2013	1
149	42.32283	19.27381	2013	1
150	42.33011	19.24189	2013	1
151	42.24294	19.01044	2013	1
152	42.24631	19.09211	2013	1
153	42.27225	19.12353	2013	1
154	42.30361	19.19164	2013	1
155	42.36094	19.22506	2013	1
156	42.42900	19.23206	2013	1
157	42.42511	19.20942	2013	1
158	42.39631	19.16072	2013	1
159	42.38967	18.92706	2013	1
160	42.38842	18.92419	2013	1
161	42.39569	18.91653	2013	1
162	42.37736	19.05856	2013	1
163	42.44131	19.22403	2013	1
164	42.49392	19.20289	2013	1
165	42.50792	19.19244	2013	1

166	42.51578	19.20497	2013	1
167	42.55222	19.10431	2013	1
168	42.56690	18.07833	2013	1
169	42.67744	18.97456	2013	1
170	42.75083	18.94089	2013	0
171	42.77336	18.94364	2013	0
172	42.77675	18.95803	2013	0
173	42.74217	19.07219	2013	1
174	42.73175	19.08397	2013	0
175	42.78161	18.93389	2013	0
176	42.81839	18.92264	2013	0
177	42.78033	18.91344	2013	0
178	42.53786	19.11275	2013	0
179	42.47200	19.18542	2013	1
180	42.46814	19.18872	2013	1
181	42.39986	18.69581	2013	1
182	42.40522	18.66489	2013	1
183	42.40706	18.65506	2013	1
184	42.41119	18.64525	2013	1
185	42.40744	18.58394	2013	0
186	42.39789	18.60231	2013	1
187	42.39125	18.59719	2013	1
188	42.38675	18.61381	2013	0
189	42.39500	18.67028	2013	1
190	42.39297	18.67042	2013	1
191	42.39272	18.67092	2013	1
192	42.39289	18.66933	2013	1
193	42.39353	18.67014	2013	1
194	42.39233	18.67111	2013	1
195	42.39169	18.67047	2013	1
196	42.39314	18.66889	2013	1
197	42.39350	18.66931	2013	1
198	42.39400	18.67103	2013	1
199	42.39308	18.67183	2013	1
200	42.39186	18.67189	2013	1
201	42.39158	18.67036	2013	1
202	42.39172	18.66975	2013	1
203	42.39272	18.66794	2013	1
204	42.39358	18.66814	2013	1
205	42.39422	18.66842	2013	1
206	42.39447	18.67008	2013	1
207	42.39447	18.67103	2013	1
208	42.39294	18.67250	2013	1

209	42.39381	18.67233	2013	1
210	42.39156	18.67250	2013	1
211	42.39089	18.67156	2013	1
212	42.39058	18.67103	2013	1
213	42.39106	18.67053	2013	1
214	42.39261	18.66728	2013	1
215	42.39389	18.66844	2013	1
216	42.39444	18.66864	2013	1
217	42.39486	18.66925	2013	1
218	42.39228	18.67272	2013	1
219	42.39192	18.67225	2013	1
220	42.39517	18.67028	2013	1
221	42.39444	18.67236	2013	1
222	42.39419	18.67211	2013	1
223	42.39136	18.66847	2013	1
224	42.39239	18.66750	2013	1
225	42.39297	18.67042	2014	1
226	42.39272	18.67092	2014	1
227	42.39289	18.66933	2014	1
228	42.39353	18.67014	2014	1
229	42.39233	18.67111	2014	1
230	42.39169	18.67047	2014	1
231	42.39314	18.66889	2014	1
232	42.39350	18.66931	2014	1
233	42.39400	18.67103	2014	1
234	42.39308	18.67183	2014	1
235	42.39186	18.67189	2014	1
236	42.39158	18.67036	2014	1
237	42.39172	18.66975	2014	1
238	42.39272	18.66794	2014	1
239	42.39358	18.66814	2014	1
240	42.39422	18.66842	2014	1
241	42.39447	18.67008	2014	1
242	42.39447	18.67103	2014	1
243	42.39294	18.67250	2014	1
244	42.39381	18.67233	2014	1
245	42.39156	18.67250	2014	1
246	42.39089	18.67156	2014	1
247	42.39058	18.67103	2014	1
248	42.39106	18.67053	2014	1
249	42.39261	18.66728	2014	1
250	42.39389	18.66844	2014	1
251	42.39444	18.66864	2014	1

252	42.39486	18.66925	2014	1
253	42.39228	18.67272	2014	1
254	42.39192	18.67225	2014	1
255	42.39517	18.67028	2014	1
256	42.39444	18.67236	2014	1
257	42.39419	18.67211	2014	1
258	42.39136	18.66847	2014	1
259	42.39239	18.66750	2014	1
260	42.44786	19.21158	2014	1
261	42.43725	19.26108	2014	1
262	42.45050	19.22592	2014	1
263	42.32239	19.28347	2014	1
264	42.32178	19.28306	2014	1
265	42.43742	19.22381	2014	1
266	42.45169	19.23336	2014	1
267	42.45100	19.23714	2014	1
268	42.42511	19.20942	2014	1
269	42.46736	19.29028	2014	1
270	42.42756	19.21558	2014	1
271	42.48031	19.15039	2014	1
272	42.80167	19.19389	2014	1
273	42.43975	19.26478	2014	1
274	42.44036	19.25328	2014	1
275	42.27169	19.20119	2014	1
276	42.29964	19.21436	2014	1
277	42.29339	18.84444	2014	1
278	42.27169	19.20119	2014	1
279	42.44786	19.21158	2014	1
280	42.44786	19.21158	2014	1
281	42.39517	18.67028	2014	1
282	42.41906	19.24717	2014	1
283	42.41906	19.24717	2014	1
284	42.45653	19.27422	2014	1
285	42.50431	19.22553	2014	1
286	42.45653	19.27422	2014	1
287	42.50467	19.22542	2014	1
288	42.44628	19.25372	2014	1
289	42.46669	19.29031	2014	1
290	42.39297	18.67042	2014	1
291	43.06808	19.10622	2015	0
292	43.06808	19.10622	2015	0
293	43.06894	19.10508	2015	0
294	43.09778	19.11044	2015	0

295	43.10769	19.12019	2015	0
296	43.11175	19.12222	2015	0
297	43.12989	19.12539	2015	0
298	43.15600	19.13219	2015	0
299	43.16383	19.14725	2015	0
300	43.14061	19.23414	2015	0
301	43.13125	19.23044	2015	0
302	43.13656	19.23292	2015	0
303	43.17433	19.31131	2015	0
304	43.19167	19.31858	2015	0
305	43.19856	19.32744	2015	0
306	43.22331	19.37442	2015	0
307	43.22617	19.38186	2015	1
308	43.23428	19.38067	2015	0
309	43.26419	19.37236	2015	0
310	43.27636	19.35436	2015	0
311	43.28692	19.34928	2015	0
312	43.34817	19.34211	2015	0
313	43.34908	19.35156	2015	0
314	43.35350	19.36411	2015	0
315	42.99739	19.67094	2015	0
316	42.99147	19.67700	2015	0
317	42.98978	19.67767	2015	0
318	43.02583	19.74225	2015	0
319	43.00053	19.74058	2015	0
320	43.01614	19.73431	2015	0
321	42.98183	19.55967	2015	0
322	42.95794	19.57825	2015	0
323	42.95128	19.57128	2015	0
324	42.88783	19.53878	2015	0
325	42.87358	19.52819	2015	0
326	42.86225	19.52503	2015	0
327	42.84408	19.51217	2015	0
328	42.83844	19.51422	2015	0
329	42.83175	19.51425	2015	0
330	42.80014	19.44994	2015	0
331	42.79625	19.43967	2015	0
332	42.79508	19.43422	2015	0
333	42.82014	19.40533	2015	0
334	42.77300	19.39122	2015	0
335	42.76425	19.38950	2015	0
336	42.72761	19.37958	2015	0
337	42.72244	19.37578	2015	1

338	42.70744	19.37342	2015	0
339	42.32283	19.27381	2015	1
340	42.45053	19.22586	2015	1
341	42.46736	19.29028	2015	1
342	42.77972	18.96842	2015	0
343	42.78044	18.96889	2015	1
344	42.77442	18.96508	2015	0
345	42.78436	18.94528	2015	0
346	42.77056	18.95039	2015	0
347	42.75217	18.95453	2015	0
348	42.75625	18.95169	2015	0
349	42.74006	19.00031	2015	0
350	42.75458	18.98892	2015	0
351	42.77381	18.95786	2015	0
352	42.76636	18.95553	2015	0
353	42.75792	18.94769	2015	0
354	42.74897	18.94356	2015	0
355	42.76394	18.95300	2015	0
356	42.77422	18.94519	2015	0
357	42.78439	18.93933	2015	0
358	42.78439	18.93933	2015	0
359	42.77331	18.98572	2015	0
360	42.77775	18.95511	2015	0
361	42.77500	18.97311	2015	0
362	42.30614	18.80508	2015	1
363	42.30608	18.80503	2015	1
364	42.30703	18.80433	2015	1
365	42.30750	18.80258	2015	1
366	42.30703	18.80139	2015	1
367	42.30686	18.79783	2015	1
368	42.30642	18.79647	2015	1
369	42.30619	18.79508	2015	1
370	42.30542	18.79531	2015	1
371	42.30539	18.79769	2015	1
372	42.30583	18.79969	2015	1
373	42.30906	18.79969	2015	1
374	42.42647	18.70856	2015	1
375	42.42583	18.70897	2015	1
376	42.42511	18.70747	2015	1
377	42.42550	18.70497	2015	1
378	42.42872	18.70167	2015	1
379	42.42800	18.70222	2015	1
380	42.42706	18.70150	2015	1

381	42.42717	18.70222	2015	1
382	42.42553	18.70175	2015	1
383	42.42611	18.70272	2015	1
384	42.42431	18.70442	2015	1
385	42.42383	18.70453	2015	1
386	42.42328	18.70539	2015	1
387	42.42378	18.70697	2015	1
388	42.42178	18.70992	2015	1
389	42.39517	18.67150	2015	1
390	42.39492	18.67033	2015	1
391	42.39458	18.67011	2015	1
392	42.39461	18.66833	2015	1
393	42.39206	18.66869	2015	1
394	42.39064	18.67103	2015	1
395	42.39183	18.67200	2015	1
396	42.39292	18.67036	2015	1
397	42.39294	18.67228	2015	1
398	42.39394	18.67089	2015	1
399	42.33379	19.24161	2015	0
400	42.32186	19.28235	2015	0
401	42.33350	19.24156	2015	0
402	42.32179	19.28304	2015	0
403	42.28232	19.29379	2015	0
404	42.28232	19.29379	2015	0
405	42.28232	19.29379	2015	0
406	42.33350	19.24156	2015	0
407	42.33357	19.24235	2015	1
408	42.49355	19.20076	2015	1
409	42.49154	19.18799	2015	0
410	42.49320	19.20219	2015	1
411	42.49392	19.20267	2015	0
412	42.49393	19.20282	2015	0
413	42.49972	19.16750	2015	0
414	42.49972	19.16731	2015	0
415	42.46954	19.18650	2015	1
416	42.49980	19.16747	2015	0
417	42.49391	19.20285	2015	0
418	42.44783	19.21163	2015	1
419	42.44789	19.21158	2015	1
420	42.39554	18.91679	2015	0
421	42.35674	19.02169	2015	0
422	42.40062	18.89738	2015	0
423	42.39528	18.91656	2015	0

424	42.38863	18.92438	2015	0
425	42.40057	18.89738	2015	0
426	42.35489	19.02034	2015	0
427	42.08021	19.13020	2015	1
428	42.00096	19.15229	2015	1
429	41.91793	19.24986	2015	1
430	41.90697	19.27882	2015	1
431	42.30602	18.79430	2015	1
432	42.30613	18.79429	2015	1
433	42.28226	18.79969	2015	1
434	42.28427	18.80477	2015	1
435	42.30613	18.79483	2015	1
436	42.28203	18.80144	2015	1
437	42.28232	18.80100	2015	1
438	42.28156	18.80020	2015	1
439	41.90702	19.27959	2015	1
440	41.90531	19.31066	2015	1
441	43.15800	18.84600	2016	0
442	43.15800	18.84600	2016	0
443	43.15800	18.84600	2016	0
444	43.15800	18.84600	2016	0
445	43.15700	18.84100	2016	0
446	43.15600	18.83900	2016	0
447	43.15600	18.83900	2016	0
448	43.15100	18.83500	2016	0
449	43.06600	18.86400	2016	0
450	43.06600	18.86400	2016	0
451	43.15800	18.84600	2016	0
452	43.15800	18.84600	2016	1
453	43.15800	18.84600	2016	0
454	43.15800	18.84600	2016	0
455	43.15500	18.84600	2016	0
456	43.15500	18.84600	2016	0
457	42.95100	19.10000	2016	0
458	42.95800	19.09600	2016	0
459	42.95700	19.09600	2016	0
460	42.95800	19.09600	2016	0
461	42.95800	19.09600	2016	0
462	42.95800	19.09600	2016	1
463	42.95800	19.09600	2016	0
464	43.15700	19.13200	2016	0
465	43.15700	19.13200	2016	0
466	43.15600	19.13200	2016	0

467	43.15100	19.12800	2016	0
468	43.15000	19.12800	2016	0
469	43.15500	19.12000	2016	0
470	43.15400	19.10100	2016	0
471	43.15400	19.10100	2016	0
472	43.19400	19.32200	2016	0
473	43.19200	19.31900	2016	0
474	43.22600	19.38200	2016	0
475	43.26300	19.37200	2016	0
476	43.26400	19.37200	2016	0
477	43.27400	19.35400	2016	0
478	43.27600	19.35400	2016	0
479	43.28700	19.34800	2016	1
480	43.27600	19.35400	2016	0
481	43.34900	19.35100	2016	0
482	43.34900	19.35000	2016	0
483	43.34900	19.35000	2016	0
484	43.34800	19.35400	2016	0
485	43.35200	19.35800	2016	0
486	43.35300	19.35800	2016	0
487	43.35300	19.35800	2016	0
488	43.35000	19.35700	2016	0
489	43.35700	19.36000	2016	0
490	43.35900	19.35900	2016	0
491	43.36000	19.35900	2016	0
492	43.03200	19.74800	2016	0
493	43.03200	19.74800	2016	0
494	43.03200	19.74800	2016	0
495	43.03200	19.74800	2016	1
496	43.03600	19.75100	2016	0
497	43.03600	19.75100	2016	0
498	43.03700	19.75200	2016	0
499	43.03700	19.75100	2016	0
500	43.05300	19.77200	2016	0
501	43.05300	19.77100	2016	0
502	43.05300	19.77200	2016	0
503	43.05300	19.77100	2016	0
504	43.05300	19.77100	2016	1
505	43.03600	19.74400	2016	0
506	43.05300	19.77100	2016	0
507	43.05300	19.77100	2016	0
508	43.03500	19.74400	2016	0
509	42.95700	19.57800	2016	0

510	42.95700	19.57800	2016	0
511	42.96000	19.58100	2016	0
512	42.95700	19.57800	2016	0
513	42.95700	19.57800	2016	0
514	42.95700	19.57800	2016	0
515	42.95700	19.57800	2016	0
516	42.96000	19.58200	2016	0
517	42.96000	19.58200	2016	0
518	42.95100	19.57100	2016	0
519	42.95100	19.57100	2016	0
520	42.95100	19.57100	2016	0
521	42.82400	19.51700	2016	0
522	42.82400	19.51700	2016	0
523	42.82400	19.52300	2016	0
524	42.82000	19.52200	2016	0
525	42.82000	19.52200	2016	0
526	42.82400	19.51700	2016	0
527	42.73400	19.79000	2016	0
528	42.73400	19.79000	2016	0
529	42.73200	19.79300	2016	0
530	42.74200	19.78500	2016	0
531	42.73400	19.79000	2016	0
532	42.73400	19.79000	2016	0
533	42.73300	19.79200	2016	0
534	42.73200	19.79300	2016	0
535	42.66200	19.88400	2016	0
536	42.66200	19.88400	2016	0
537	42.66300	19.88000	2016	0
538	42.66300	19.88000	2016	0
539	42.63300	19.88000	2016	0
540	42.63300	19.88000	2016	0
541	42.66200	19.88400	2016	0
542	42.66400	19.88100	2016	0
543	42.60000	19.93700	2016	0
544	42.60000	19.93700	2016	0
545	42.60000	19.93600	2016	0
546	42.60000	19.93700	2016	0
547	42.60600	19.93000	2016	0
548	42.60600	19.93000	2016	0
549	42.60600	19.93000	2016	0
550	42.60600	19.93000	2016	0
551	42.60600	19.93000	2016	0
552	42.55000	19.82500	2016	0

553	42.55100	19.82800	2016	0
554	42.55100	19.82800	2016	0
555	42.56100	19.83400	2016	0
556	42.56100	19.83400	2016	0
557	42.56100	19.83400	2016	0
558	42.56100	19.83400	2016	0
559	42.56100	19.83400	2016	0
560	42.56100	19.83400	2016	0
561	42.56500	19.83300	2016	0
562	42.73100	19.78800	2016	0
563	42.84300	19.87200	2016	0
564	42.84300	19.87200	2016	0
565	42.84300	19.87200	2016	0
566	42.84300	19.87200	2016	0
567	42.84400	19.87200	2016	0
568	42.84300	19.87300	2016	0
569	42.84200	19.87600	2016	0
570	42.84200	19.87600	2016	0
571	42.84500	19.87500	2016	0
572	42.84500	19.87500	2016	0
573	42.84500	19.87500	2016	0
574	42.83700	19.86700	2016	0
575	42.82200	19.85500	2016	0
576	42.83500	20.15300	2016	0
577	42.83500	20.15300	2016	0
578	42.83500	20.15300	2016	0
579	42.84300	20.17100	2016	0
580	42.84300	20.17100	2016	0
581	42.83700	20.15700	2016	0
582	42.83700	20.15700	2016	0
583	42.83700	20.14700	2016	0
584	42.83700	20.14700	2016	0
585	42.83700	20.14700	2016	0
586	42.83600	20.15700	2016	0
587	42.84100	20.16400	2016	0
588	42.85100	20.18000	2016	0
589	42.32100	19.28200	2016	1
590	42.46700	19.29000	2016	1
591	42.39400	18.70156	2016	1
592	42.39461	18.70053	2016	1
593	42.39681	18.69889	2016	1
594	42.39858	18.69731	2016	1
595	42.39989	18.69550	2016	1

596	42.40047	18.69481	2016	1
597	42.40133	18.69297	2016	1
598	42.40133	18.69297	2016	1
599	42.40144	18.69314	2016	1
600	42.40306	18.68953	2016	1
601	42.40344	18.68700	2016	1
602	42.40361	18.68308	2016	1
603	42.40700	18.65506	2016	1
604	42.40789	18.65328	2016	1
605	42.40836	18.65192	2016	1
606	42.40886	18.65064	2016	1
607	42.40931	18.64881	2016	1
608	42.41028	18.64753	2016	1
609	42.41139	18.64486	2016	1
610	42.41258	18.64189	2016	1
611	42.41289	18.64056	2016	1
612	42.41347	18.63936	2016	1
613	42.41364	18.63722	2016	1
614	42.41431	18.63531	2016	1
615	42.41031	18.64503	2016	1
616	42.41047	18.64397	2016	1
617	42.41131	18.64339	2016	1
618	42.39500	18.67033	2016	1
619	42.39439	18.66836	2016	1
620	42.39269	18.66875	2016	1
621	42.39189	18.66997	2016	1
622	42.39106	18.67119	2016	1
623	42.39133	18.67172	2016	1
624	42.39256	18.67003	2016	1
625	42.39222	18.67133	2016	1
626	42.39294	18.67022	2016	1
627	42.39228	18.67286	2016	1
628	42.39400	18.70156	2017	1
629	42.39400	18.70156	2017	1
630	42.39461	18.70053	2017	1
631	42.39681	18.69889	2017	1
632	42.39858	18.69731	2017	1
633	42.39858	18.69731	2017	1
634	42.39989	18.69550	2017	1
635	42.40047	18.69481	2017	1
636	42.40133	18.69297	2017	1
637	42.40133	18.69297	2017	1
638	42.40133	18.69297	2017	1

639	42.40144	18.69314	2017	1
640	42.40306	18.68953	2017	1
641	42.40306	18.68953	2017	1
642	42.40344	18.68700	2017	1
643	42.40344	18.68700	2017	1
644	42.40361	18.68308	2017	1
645	42.40700	18.65506	2017	1
646	42.40700	18.65506	2017	1
647	42.40789	18.65328	2017	1
648	42.40836	18.65192	2017	1
649	42.40836	18.65192	2017	1
650	42.40886	18.65064	2017	1
651	42.40931	18.64881	2017	1
652	42.41028	18.64753	2017	1
653	42.41028	18.64753	2017	1
654	42.41139	18.64486	2017	1
655	42.41258	18.64189	2017	1
656	42.41289	18.64056	2017	1
657	42.41347	18.63936	2017	1
658	42.41364	18.63722	2017	1
659	42.41364	18.63722	2017	1
660	42.41431	18.63531	2017	1
661	42.41031	18.64503	2017	1
662	42.41031	18.64503	2017	1
663	42.41047	18.64397	2017	1
664	42.41131	18.64339	2017	1
665	42.39500	18.67033	2017	1
666	42.39500	18.67033	2017	1
667	42.39439	18.66836	2017	1
668	42.39269	18.66875	2017	1
669	42.39189	18.66997	2017	1
670	42.39189	18.66997	2017	1
671	42.39106	18.67119	2017	1
672	42.39133	18.67172	2017	1
673	42.39256	18.67003	2017	1
674	42.39256	18.67003	2017	1
675	42.39222	18.67133	2017	1
676	42.39222	18.67133	2017	1
677	42.39294	18.67022	2017	1
678	42.39228	18.67286	2017	1
679	42.39228	18.67286	2017	1
680	42.39442	18.67011	2017	1
681	42.39442	18.67011	2017	1

682	42.39347	18.66828	2017	1
683	42.39347	18.66828	2017	1
684	42.39164	18.66975	2017	1
685	42.39164	18.66975	2017	1
686	42.39281	18.67269	2017	1
687	42.39281	18.67269	2017	1
688	42.39400	18.67100	2017	1
689	42.39400	18.67100	2017	1

Table S2: Monthly normal values for Bar (Montenegro)

Month	1981 – 2010		2001 – 2030		2071 – 2100	
	Temp. [°C]	Precip. [mm]	Temp. [°C]	Precip. [mm]	Temp. [°C]	Precip. [mm]
1	8.98	126.18	9.64	139.59	13.32	151.39
2	9.06	132.50	9.97	149.81	13.59	188.85
3	11.18	119.52	11.56	152.15	15.00	130.30
4	14.16	115.02	14.66	122.64	17.51	82.95
5	18.39	69.13	18.68	71.17	21.95	39.21
6	21.90	58.25	21.96	58.45	26.11	24.02
7	24.34	29.94	24.50	28.50	28.36	18.39
8	24.40	47.14	23.99	44.21	27.64	11.76
9	21.31	127.74	21.18	87.96	24.64	69.80
10	17.85	154.73	17.48	114.75	20.72	132.21
11	13.57	162.92	13.63	145.62	18.31	141.44
12	10.15	169.61	10.44	158.33	13.43	145.88

Table S3: Monthly normal values for Herceg Novi (Montenegro)

Month	1981 – 2010		2001 – 2030		2071 – 2100	
	Temp. [°C]	Precip. [mm]	Temp. [°C]	Precip. [mm]	Temp. [°C]	Precip. [mm]
1	9.33	172.12	9.32	211.52	13.07	248.59
2	9.25	182.06	9.80	195.67	13.62	233.25
3	11.29	165.72	11.73	207.57	15.57	182.92
4	14.22	150.61	15.06	148.40	18.60	107.22
5	18.65	96.86	18.90	83.68	22.55	49.29
6	22.23	74.10	22.52	63.51	27.91	25.37
7	25.01	33.98	25.46	33.35	30.47	19.11
8	25.14	68.93	25.51	79.87	30.69	20.99
9	21.53	131.39	22.11	125.23	26.48	86.37
10	17.93	191.73	17.65	149.90	21.02	170.82
11	13.59	239.94	13.51	206.08	18.39	186.60
12	10.38	253.98	10.40	215.15	13.63	193.85

Table S4: Monthly normal values for Kolašin (Montenegro)

Month	1981 – 2010		2001 – 2030		2071 – 2100	
	Temp. [°C]	Precip. [mm]	Temp. [°C]	Precip. [mm]	Temp. [°C]	Precip. [mm]
1	-0.98	203.47	-0.61	205.83	3.26	144.46
2	-0.32	193.72	0.40	191.74	3.54	203.40
3	3.14	179.88	3.01	210.27	6.24	248.00
4	7.18	181.07	6.79	182.72	9.47	173.37
5	11.94	124.78	11.28	108.62	14.21	120.80
6	15.01	105.15	14.37	103.77	17.83	73.72
7	17.19	63.79	16.79	76.04	20.52	52.97
8	17.22	77.52	16.00	96.83	19.18	60.84
9	13.44	170.57	12.59	126.02	15.41	85.86
10	9.40	212.12	7.97	206.77	10.92	246.50
11	4.08	300.47	3.97	269.72	8.23	241.85
12	-0.05	285.47	0.30	268.55	3.20	198.75

Table S5: Monthly normal values for Pljevlja (Montenegro)

Month	1981 – 2010		2001 – 2030		2071 – 2100	
	Temp. [°C]	Precip. [mm]	Temp. [°C]	Precip. [mm]	Temp. [°C]	Precip. [mm]
1	-1.33	46.48	-0.84	61.71	3.80	40.62
2	0.56	56.09	1.00	45.58	4.68	44.62
3	4.59	48.38	4.53	55.19	8.04	79.57
4	8.68	60.23	8.65	53.64	11.64	57.78
5	13.67	64.82	13.24	60.05	16.40	65.38
6	16.88	82.04	16.11	87.41	19.91	67.89
7	18.79	66.06	18.51	77.79	22.65	51.84
8	18.98	63.70	18.04	72.56	21.67	41.04
9	14.98	73.81	14.36	63.29	17.53	46.94
10	10.83	65.12	9.10	89.95	12.29	103.63
11	4.79	83.08	4.52	97.31	9.15	76.08
12	0.04	64.39	-0.27	71.38	3.09	52.32

Table S6: Monthly normal values for Podgorica (Montenegro)

Month	1981 – 2010		2001 – 2030		2071 – 2100	
	Temp. [°C]	Precip. [mm]	Temp. [°C]	Precip. [mm]	Temp. [°C]	Precip. [mm]
1	6.36	159.75	6.37	172.47	9.56	178.11
2	7.43	157.14	7.70	168.28	10.66	209.70
3	10.81	153.88	10.85	182.41	14.16	151.39
4	14.61	137.75	14.66	146.46	17.56	98.52
5	19.83	83.23	19.60	73.83	23.08	57.17
6	23.82	64.52	23.54	69.61	28.13	35.29
7	27.20	27.30	27.40	33.30	32.13	22.61
8	27.17	55.51	26.78	58.71	31.42	22.77
9	22.23	146.66	22.29	98.89	25.86	75.59
10	17.24	172.74	16.37	134.64	19.40	157.67
11	11.39	245.45	10.98	175.62	14.89	174.41
12	7.42	227.90	7.22	209.72	9.66	180.21

Table S7: Monthly normal values for Ulcinj (Montenegro)

Month	1981 – 2010		2001 – 2030		2071 – 2100	
	Temp. [°C]	Precip. [mm]	Temp. [°C]	Precip. [mm]	Temp. [°C]	Precip. [mm]
1	6.36	159.75	8.11	139.81	12.50	148.48
2	7.43	157.14	8.72	140.66	12.75	176.42
3	10.81	153.88	11.15	142.44	15.20	129.74
4	14.61	137.75	14.60	109.82	17.76	74.08
5	19.83	83.23	18.63	55.92	22.00	30.16
6	23.82	64.52	22.30	54.53	27.15	21.62
7	27.20	27.30	25.45	25.35	30.58	16.55
8	27.17	55.51	25.23	45.16	30.09	13.64
9	22.23	146.66	22.03	85.70	25.95	58.84
10	17.24	172.74	17.40	114.94	20.82	137.26
11	11.39	245.45	12.63	145.56	17.62	148.37
12	7.42	227.90	9.01	160.25	12.36	150.92

Table S8: Monthly normal values for Žabljak (Montenegro)

Month	1981 – 2010		2001 – 2030		2071 – 2100	
	Temp. [°C]	Precip. [mm]	Temp. [°C]	Precip. [mm]	Temp. [°C]	Precip. [mm]
1	-2.88	111.52	-2.90	115.95	1.24	79.80
2	-2.86	113.55	-2.59	95.56	1.26	96.44
3	0.09	104.57	-0.05	122.05	3.82	145.93
4	4.08	120.37	3.63	113.70	6.70	113.30
5	9.23	99.51	8.87	94.63	12.44	101.21
6	12.64	89.21	12.54	103.64	16.97	77.41
7	14.89	66.83	15.33	82.52	20.47	56.64
8	15.11	70.26	14.63	88.62	18.85	52.33
9	11.07	119.47	10.94	102.94	14.44	78.29
10	7.32	163.01	5.86	168.06	9.24	218.31
11	2.11	201.23	1.69	202.63	6.22	173.04
12	-1.66	176.22	-1.72	161.84	1.41	115.92

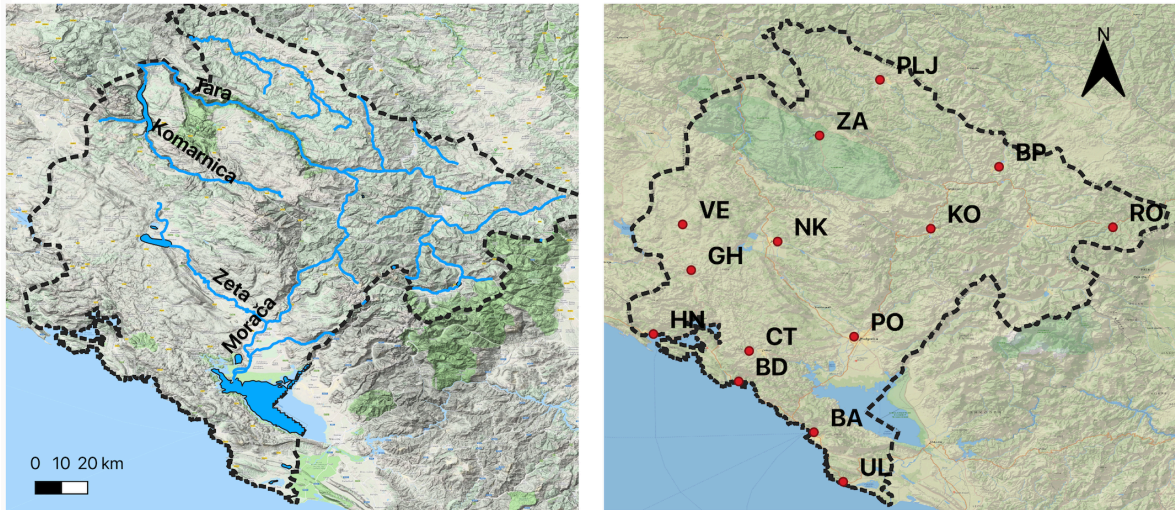


Figure S1: River system and orography (left), meteorological stations from the national network and major roads (right) in Montenegro (BA – Bar, HN – Herceg Novi, KO – Kolašin, PLJ – Pljevlja, PO – Podgorica, UL – Ulcinj, ZA – Žabljak, BP – Bijelo Polje, BD – Budva, CT – Cetinje, GH – Grahovo, NK – Nikšić, RO – Rožaje, VE – Velimlje)

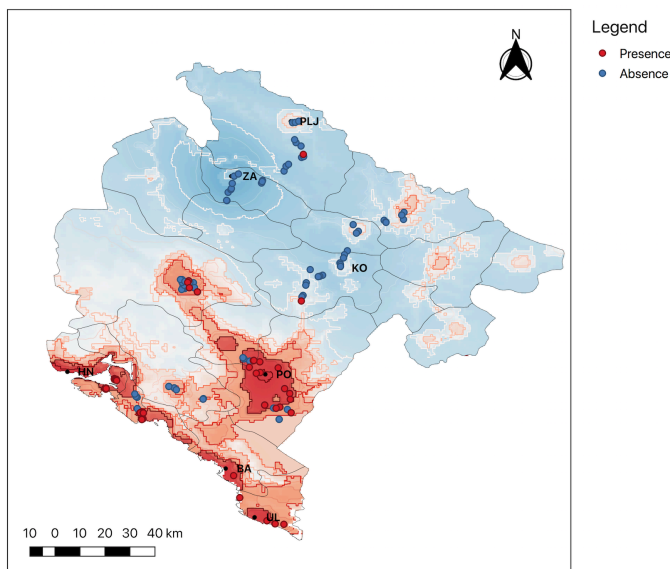


Figure S2: Observed catches of *Aedes albopictus* for 2015, presences are represented by red dots, absences are represented by blue dots