

Figure S1: Example of recorded variation in aerosol species mass concentrations from 24th August - 5th September, 2011. DOY = day of year.

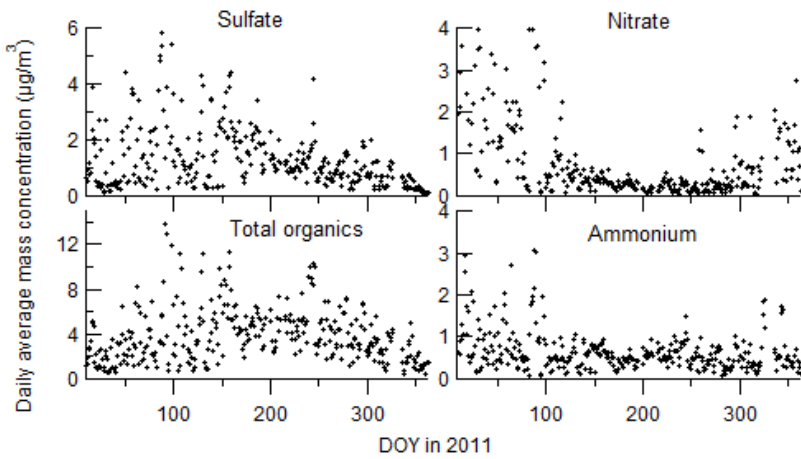


Figure S2: Seasonal variation in aerosol species mass concentrations in 2011. DOY = day of year.

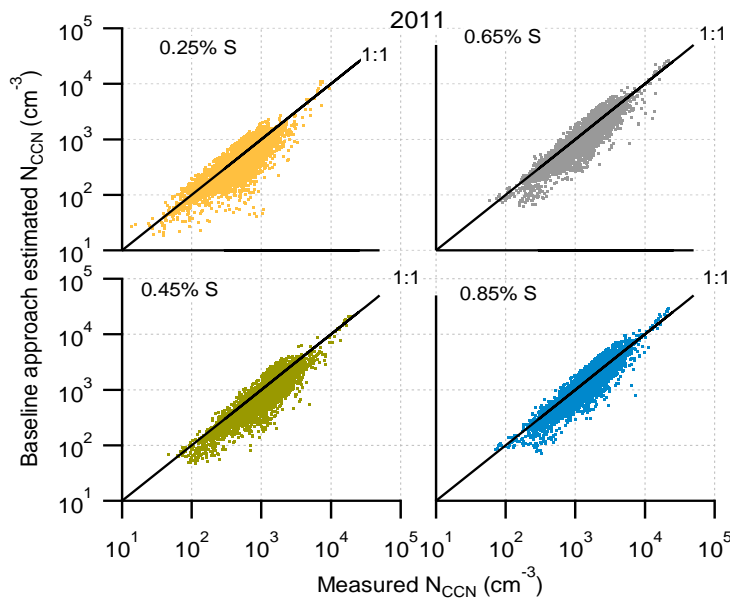


Figure S3: Baseline approach estimated vs. measured N_{CCN} at 0.25%, 0.45%, 0.65%, and 0.85% S for all data from 2011.

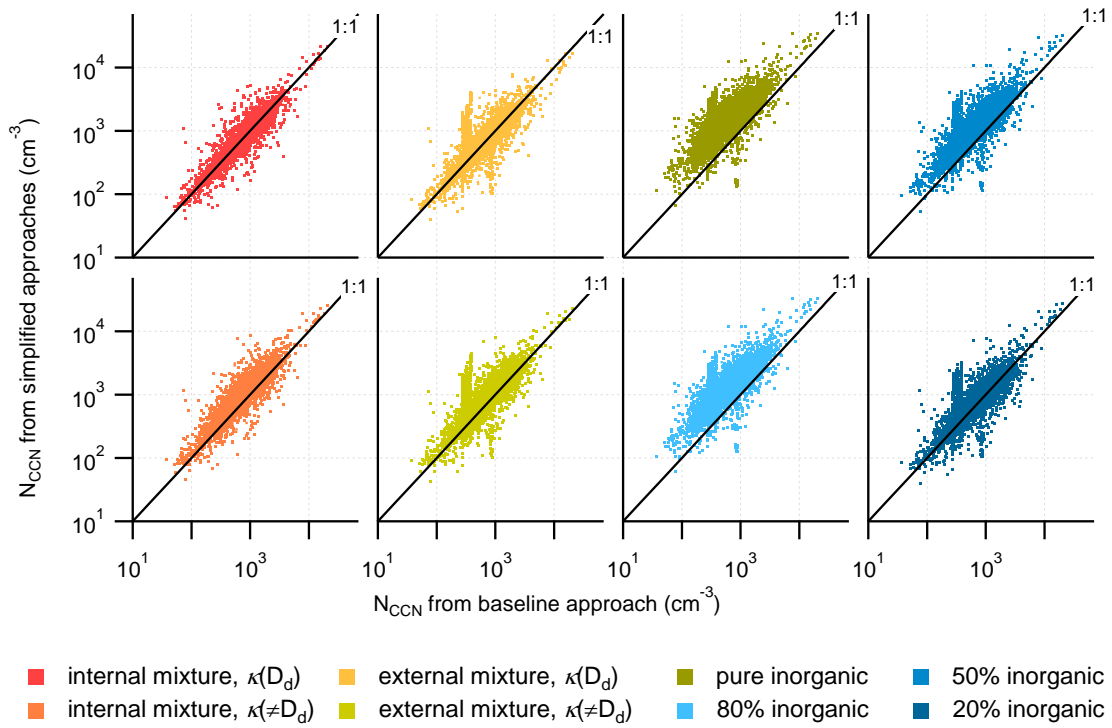


Figure S4: N_{CCN} estimated from simplified approaches vs. baseline approach at 0.45% for all 2011 data.

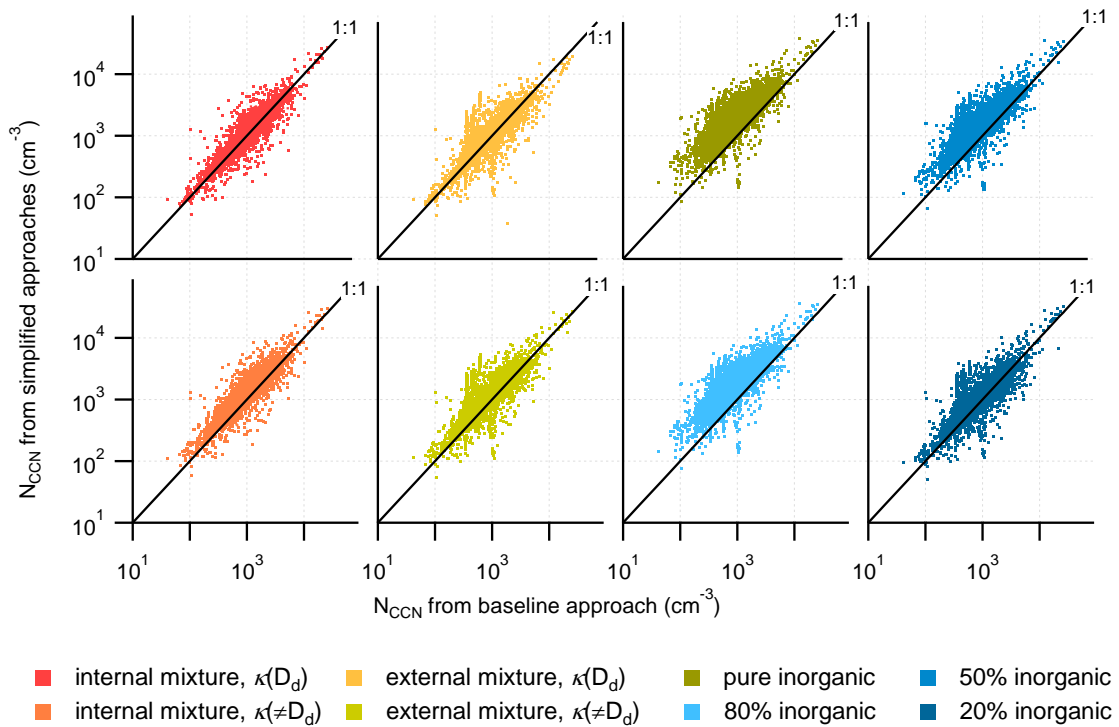


Figure S5: N_{CCN} estimated from simplified approaches vs. baseline approach at 0.65% for all 2011 data.