

Supplementary Materials: Infiltration and Short-Time Recharge in Deep Karst Aquifer of the Salento Peninsula (Southern Italy): An Observational Study.

Marco Delle Rose and Paolo Martano

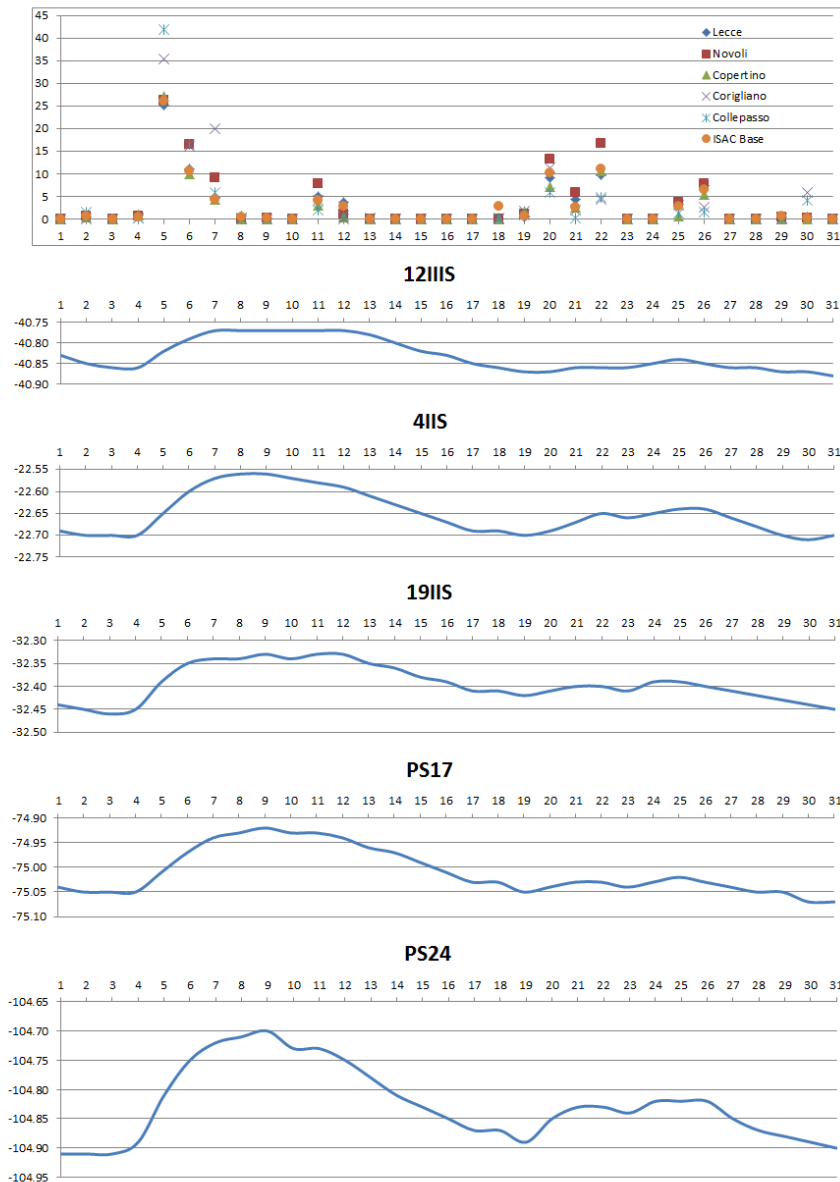


Figure S1. Comparison between March 2009 daily precipitation (mm) and piezometric levels (m) in the five considered wells of the deep karst aquifer. Piezometric levels have been measured from the local well tops (data from http://www.sit.puglia.it/portal/portale_cis).