

Taxonomic and Functional Responses of Benthic Macroinvertebrate Communities to Hydrological and Water Quality Variations in a Heavily Regulated River

Alex Laini ^{1,*}, Pierluigi Viaroli ^{1,*}, Rossano Bolpagni ^{1,2}, Tommaso Cancellario ³, Erica Racchetti ¹ and Simone Guareschi ^{4,5}

¹ Department of Chemistry, Life Sciences and Environmental Sustainability, University of Parma, Parco Area delle Scienze 11/A, 43124 Parma, Italy

² Institute for Electromagnetic Sensing of the Environment, National Research Council, Via Bassini 15, 20133 Milan, Italy

³ Biodiversity Data Analytics and Environmental Quality Group, Department of Environmental Biology, University of Navarra, Irunlarrea 1, E-31080 Pamplona, Spain

⁴ Department of Ecology and Hydrology, Regional Campus of International Importance “Campus Mare Nostrum”, University of Murcia, Espinardo Campus, 30100 Murcia, Spain

⁵ Geography and Environment, Centre for Hydrological and Ecosystem Science, Loughborough University, Loughborough, Leicestershire LE11 3TU, UK

* Correspondence: alex.laini@unipr.it (A.L.); pierluigi.viaroli@unipr.it (P.V.)

Received: 17 May 2019; Accepted: 12 July 2019; Published: date

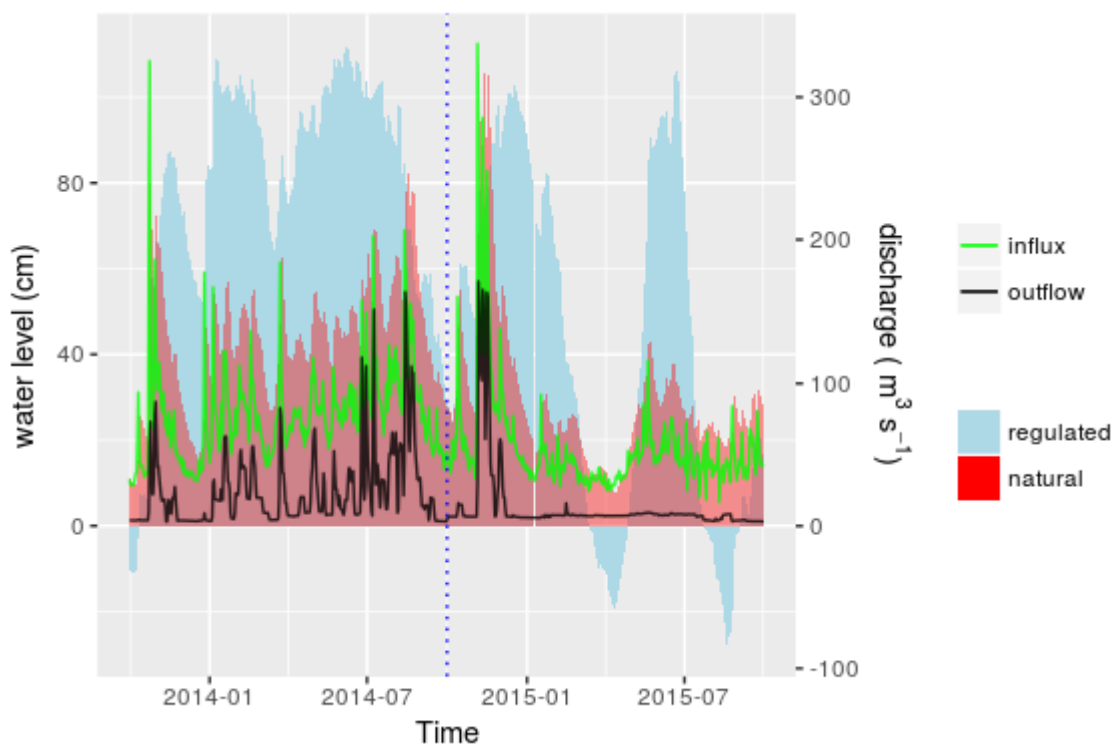


Figure S1. Water influx to and water outflow from the lake Lseo and regulated and natural water levels at Sarnico dam. Vertical dotted line separates the hydrological years (October-September of both 2014 and 2015). Data are provided by Consorzio dell’Oglio at <http://www.oglioconsorzio.it/> (last accessed 12/04/2019).

Table S1. Taxa collected at the investigated sites. Abundances are reported for the whole investigation period.

TAXA	Site 1	Site 2	Site 3	Site 4
Corbiculidae	1	9	32	53
Dreissenidae	1357	199	227	10
Pisidiidae	0	4	14	45
Sphaeriidae	1	3	1	26
Hydridae	5942	1252	1083	1743
Dryopidae	1	0	0	0
Dytiscidae	2	0	0	0
Elmidae	206	182	803	865
Hydraenidae	1	1	0	0
Hydrophilidae	0	0	0	4
Asellidae	102	56	233	142
Gammaridae	196	15	82	129
Niphargidae	0	0	0	1
Ceratopogonidae	4	1	0	4
Chironomidae	5761	8957	14779	6018
Empididae	72	37	78	22
Ephydriidae	0	1	0	0
Limoniidae	100	125	221	13
Muscidae	4	3	0	2
Psychodidae	40	13	2	5
Simuliidae	7612	4196	1671	279
Tabanidae	4	0	0	6
Tipulidae	3	10	0	4
Baetidae	5352	4591	4984	7634
Caenidae	313	459	1291	1634
Ephemerellidae	560	272	393	1709
Heptageniidae	45	3	91	279
Leptophlebiidae	10	1	0	4
Potamanthidae	0	0	1	4
Acroloxiidae	14	0	0	1
Ancylidae	12	0	0	0
Bithyniidae	48	47	55	31
Hydrobiidae	17	3	2	33
Lymnaeidae	41	24	26	13
Neritidae	0	0	0	1
Physidae	53	106	35	92
Planorbidae	104	11	18	29
Valvatidae	25	33	51	57
Viviparidae	0	0	0	7
Aphelocheiridae	0	16	11	38
Corixidae	0	0	0	1
Erpobdellidae	10	8	21	50
Glossiphoniidae	0	0	1	1
Hydracarina	84	166	332	102
Pyralidae	1	0	0	2
Mermithidae	8	8	16	5
Gordiidae	0	0	0	1
Calopterygidae	0	0	0	1
Coenagrionidae	1	0	0	0
Gomphidae	4	1	0	18
Platynemididae	0	0	1	0
Haplotaenidae	0	0	0	5
Lumbricidae	25	30	33	40
Lumbriculidae	1	0	0	0
Naididae	804	1275	1491	6993

Tubificidae	2	0	5	3
Leuctridae	63	13	72	466
Ecnomidae	4	0	0	0
Goeridae	15	1	3	6
Hydropsychidae	4342	4110	7036	2715
Hydroptilidae	476	160	348	210
Lepidostomatidae	9	14	221	282
Leptoceridae	112	106	173	170
Polycentropodidae	0	0	1	1
Psychomyiidae	701	1677	1102	533
Rhyacophilidae	196	304	331	105
Sericostomatidae	1	0	0	0
Dugesiiidae	533	92	231	453
Cambaridae	0	0	1	0