

Article

Maize Yield and Irrigation Applied in Conservation and Conventional Tillage at Various Plant Densities

Anna Orfanou, Dimitrios Pavlou and Wesley M. Porter *

Department of Crop & Soil Sciences, College of Agricultural & Environmental Sciences, University of Georgia, Athens, GA 30602, USA

* Correspondence: wporter@uga.edu; Tel.: +1-229-386-7328

Received: 12 July 2019; Accepted: 14 August 2019; Published: 19 August 2019



Abstract: Maize is one of the most highly produced crops around the world. Factors such as population density, solar radiation, temperature, availability of nutrients and water, and proper tillage method can have favorable results in increasing yield. This project began in 2015, at two different locations in Georgia (Tifton and Camilla), GA, USA, and has been evaluated for three consecutive maize growing seasons. In each location, a different irrigation method was applied; the University of Georgia (UGA) maize checkbook method was utilized in Tifton and a soil moisture sensor-based method was utilized in Camilla. The different treatments consisted of two tillage methods, conservation and conventional, and four plant densities (69K, 88K, 99K, and 133K plants/ha). The purpose of the project was the evaluation of water requirements by population and tillage method for achieving high maize yields. Soil moisture information was collected hourly in both fields. The results showed that higher plant densities do not necessarily require higher irrigation amounts and do not always have the best results in terms of yield. Conventional tillage had slightly better yield results but not statistically different from conservation tilled plots. Additionally, the results showed that applied irrigation can help in higher maize production. However, increasing the amount of water does not directly equate to higher yield results.

Keywords: irrigation scheduling; soil moisture sensors; checkbook method; conservation tillage; conventional tillage; maize plant densities; maize yield

1. Introduction

The global population is growing, requiring food production to be increased 50% to 70% higher by 2050 in order to meet population needs [1]. Additionally, the growing demand in biofuels over the years [2] has led to higher interest in increasing crop production. Weather conditions such as rainfall, solar radiation (sunlight), daylight, and night temperatures, together with management practices such as population density, availability of nutrients and irrigation, and proper tillage method can have favorable results in increasing crop yields.

Maize (*Zea mays*) is one of the world's most highly produced crops and one of the most important crops in the U.S.A. [3]. It is used for human consumption, livestock feed, and biofuel production, especially maize-based ethanol [2]. However, it is vulnerable to water, nutrient, and sunlight stresses. Any shortage of sunlight, from full canopy through the reproductive period, is potentially limiting to maize yield [4]. According to Pioneer, cloudy, rainy periods during susceptible stages of maize development can have significant effects on yield because the photosynthetically active radiation (PAR), which is the portion of the solar radiation spectrum that plants can use (43% to 50% of the total solar radiation) is reduced proportionately to cloud cover [4]. A research conducted in California and Kentucky, USA, during the 1969 and 1970 growing seasons testing the sunlight and temperature effects in maize yield, showed that locations with high sunlight, high daylight temperatures and low

night temperatures had higher yield results than locations with low sunlight, daylight temperatures and high night temperatures [5]. Night temperatures above the average accelerate the phenological development and, during reproductive stages, can reduce kernel number and kernel weight, resulting in lower yields [6].

Water stress can influence maize developmental and physiological processes resulting in reduced biomass and consequently yield, due to a reduced number of kernels per ear or kernel weight [7,8]. Consequently, proper irrigation should be applied to avoid some of the stresses that limit yield potential. Although irrigation is one of the most important uses of water in agriculture and a key tool in managing maize production, it should be used wisely. Globally the highest amount of fresh water (70%) is used for irrigation in agriculture [9] while the total irrigation withdrawals were 446,678,592,400 L/day (118,000 Mgal/day) in the United States during 2015, which can be translated to 42% of total freshwater withdrawals [10]. According to the United States Geological Survey (USGS) [11], only half of the irrigated water is returnable through the ground or streams. The main irrigation issue that needs to be addressed is finding ways to increase agricultural production while using less water, making irrigation efficiency crucial [12]. For increasing the irrigation efficiency, a scheduling method meaning a process of deciding the time and amount of water to be applied should be followed. The choice of the irrigation scheduling method depends on the objectives of the irrigator and the capabilities of the irrigation system [13] and they can be classified as plant-based, soil-based, climate-based, or combination [14]. Instruments and tools assisting in irrigation scheduling includes soil moisture sensors, weather stations, crop water use estimators, daily soil water balance checkbook worksheets, and software programs for estimating daily soil water balance [15].

A water balance method or checkbook method is the simplest way of scheduling irrigation. It estimates the soil water balance by measuring the amount of water that infiltrates the soil through irrigation or rainfall and the amount of water that is used by plants and evaporation. An example of a water balance method is the UGA Checkbook method found by Harrison and Lee (2007) for maize in Georgia, which was developed from a historical average of evapotranspiration [16]. Water balance are cost-effective methods because they do not require purchase of equipment and tools and do not require fieldwork [17]. However, the checkbook method might include challenging calculations and the irrigator should pay a close attention to the weather conditions [17]. The use of soil moisture sensors is another method for scheduling irrigation. The data from the sensors can be used for taking proper decisions about the time and the amount of water that needs to be applied based on the soil conditions. A detailed description of the University of Georgia smart sensor array (UGA SSA) system was presented by Vellidis et al. [18]. Some notable characteristics and advantages of the system are the use of mesh networks for the communication of the irrigation sensor nodes, the system does not need calibration meaning that it can be used in any type of soil, the design of the antenna which allows field equipment such as sprayers to pass over the sensors and its low cost [18]. Several studies have shown that one of the most important factors for increasing maize yield is by optimizing plant population density (total number of plants present in an area of land (plants/ha)), which is related to water availability [19–21]. In many cases, farmers favor planting maize in high plant densities for pursuing high maize yields [22] even if there is possibility of interplant competition, particularly for light, water, and nutrients [23,24], which affects maize growth [25].

Another important factor for increasing maize yield that should be addressed is the tillage method. Conventional tillage usually involves turning the whole of the topsoil. By employing conventional tillage, it is possible to accelerate the organic matter break-down due to soil inversion and thereby soil aeration is increased. Until recently, conventional tillage was the common practice in many fields as a means of mechanical weed control. However, this is not the only reason that tillage is important. In a long-term tillage study, it was found that it is possible to conserve soil moisture and reduce evaporation by following a no till method in comparison to conventional tillage [26]. Moreover, conservation tillage practices have the potential for improving root penetration, minimizing erosion, enhancing water infiltration and overall yield [27]. Strip tillage and no tillage can have favorable results in maize yield

and water productivity (grain yield/crop water use) and can be used especially in areas that water is limited [28].

The goal of this study was to evaluate the water requirements of different maize population densities and tillage methods, based on soil moisture data collected by soil moisture sensors installed at different depths in the field. Two irrigation scheduling methods were implemented. One of them was the checkbook method, which is based on historical evapotranspiration data, while the other one was the sensor-based method, in which each treatment was irrigated accordingly based on daily Soil Water Tension (SWT) data collected by the soil moisture sensors. The treatments consisted of four plant densities, 69K, 88K, 99K, and 133K plants/ha, and two tillage methods, conservation (strip tillage) and conventional. The different irrigation methods were correlated to yield data collected at the end of each growing season.

2. Materials and Methods

A three-year project focusing on maize production utilizing the hybrid P1916YHR (Pioneer, Johnston, IA, USA) began in 2015, making 2017 the third consecutive maize growing season, in two locations in South Georgia (Figure 1). Both locations were on one of the University of Georgia's research farms; the Rural Development Center (RDC) field was in Tifton, GA ($31^{\circ}29'4.32''$ N, $83^{\circ}31'18.07''$ W), and the other one called SIRP was located at Stripling Irrigation Research Park (SIRP) ($31^{\circ}16'46.44''$ N, $84^{\circ}17'59.48''$ W) in Camilla, GA. Both fields were chosen due to space availability. Maize is planted at these two locations to follow proper crop rotations and both conservation and conventional tillage are employed every year. Additionally, the variable rate irrigation (VRI) system in SIRP field was essential for conducting this study.

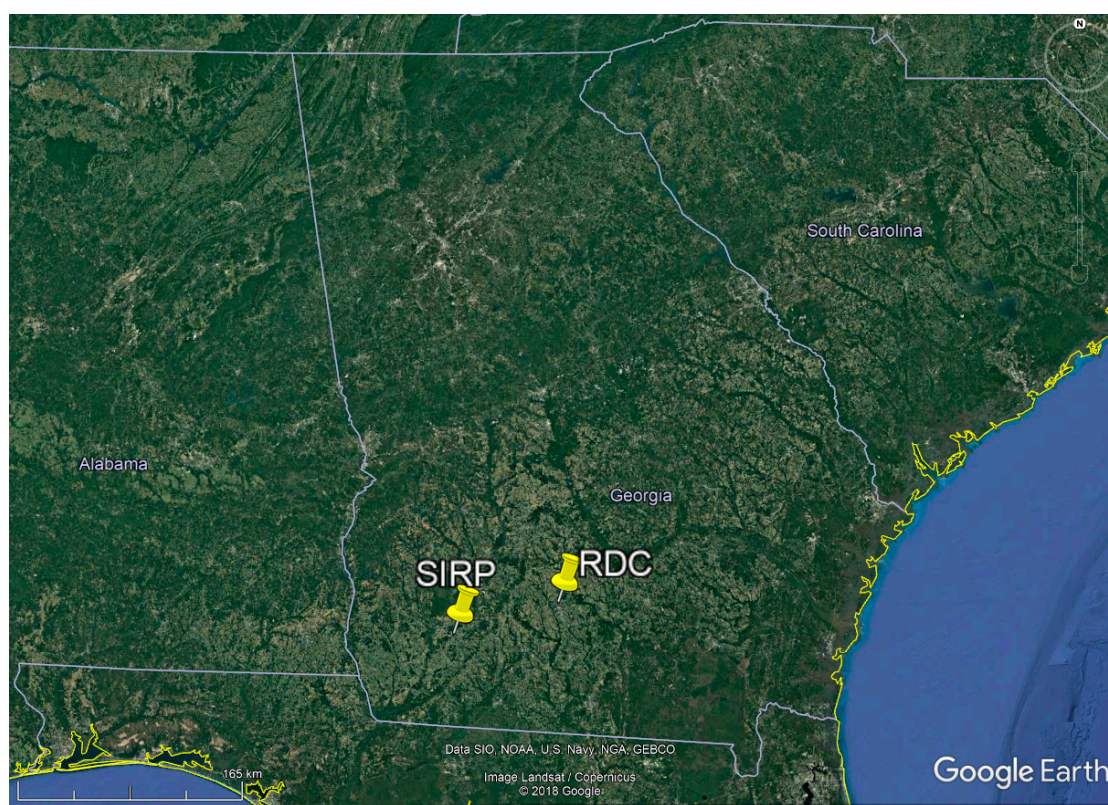


Figure 1. Image from Google Earth showing the location of the two fields (RDC and SIRP).

The RDC field was 6 ha and consisted of four blocks (quadrants), shown with white borders in Figure 2. A proper crop rotation between soybeans, cotton, peanuts and maize was followed between the years. Maize always followed peanuts and the map in Figure 2 shows the location that maize was planted each year between 2015 and 2017.

A split plot design was followed during the three years of the project. There were two main plots assigned to the tillage method. Conservation and conventional tillage methods were implemented and are shown with yellow and green borders respectively in Figure 2a. The main plots were separated into subplots of 4 m wide (four rows) and 9 m long for the different treatments of plant density to be applied. The plant densities are marked with light blue for 69K plants/ha, orange for 88K plants/ha, green for 99K plants/ha and red for 133K plants/ha.

Sixteen subplots were chosen from each tillage method in order to have four replications of the four plant densities and were completely randomized in each tillage treatment. During the second and third years of the project, i.e., 2016 and 2017, the length of the subplots was doubled (18 m) for sampling purposes and they were further separated into north (N) and south (S) subplots. The middle two rows of the north plots were used for collecting the yield data, while the south plots were used for installing soil moisture sensors (Figure 2b).

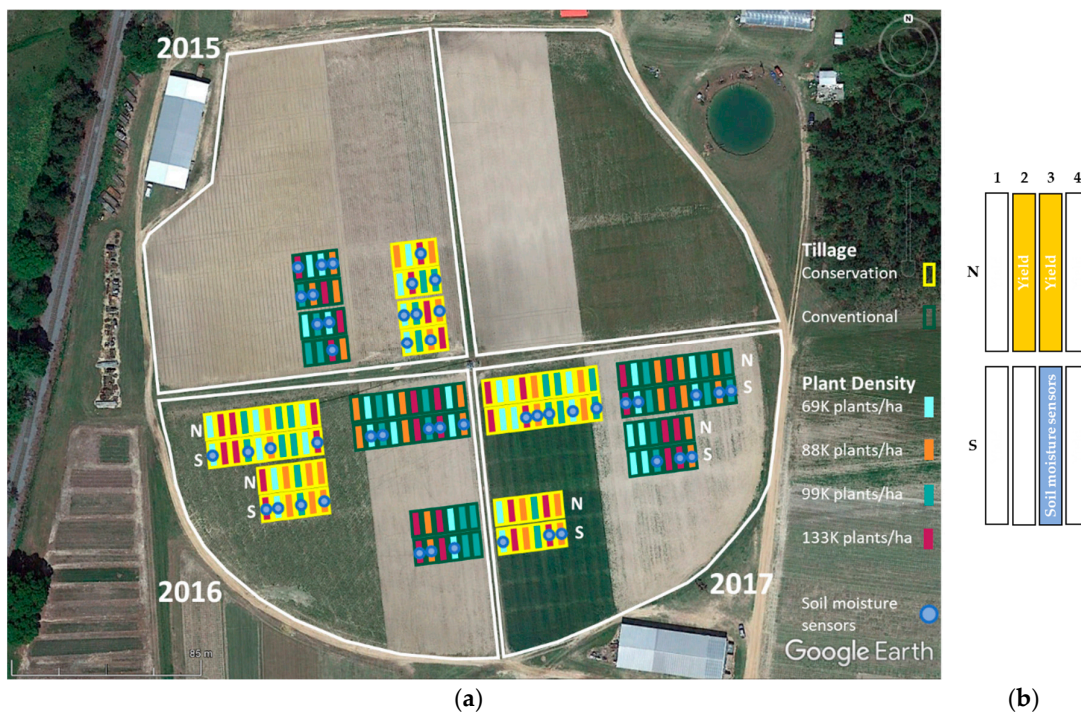


Figure 2. (a) Plot plans of maize during 2015, 2016, and 2017 growing seasons in RDC field and (b) plots configuration.

The SIRP field was 4 ha and was separated into three blocks, shown with white borders in Figure 3a, for proper crop rotation between cotton, peanuts and maize between the years. Similar to the RDC field, maize followed peanuts. The location of the maize for each year of the project is indicated in Figure 3 with the corresponding year (2015, 2016, and 2017) written next to it.

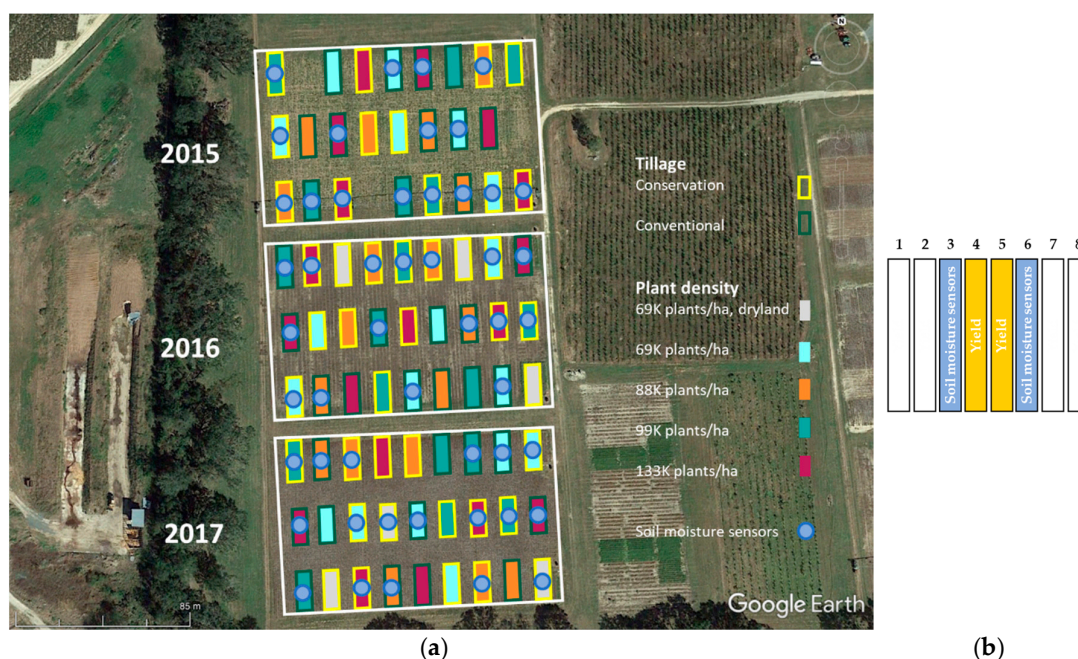


Figure 3. (a) Plot plans of maize during 2015, 2016, and 2017 growing seasons in SIRP field and (b) plots configuration.

The blocks were separated into smaller plots of 8 m wide (eight rows) and 15 m long and the treatments of tillage method (conservation and conventional) and plant density (69K, 88K, 99K, and 133K plants/ha) were assigned to them using a complete randomized design. The border color of each plot represents the tillage method (yellow for conventional and green for conservation), while the color used to fill each plot represents the plant density (light blue for 69K plants/ha, orange for 88K plants/ha, green for 99K plants/ha and red for 133K plants/ha).

Twenty-four plots were chosen in order to have three replications of each treatment. Three more plots were selected during 2016 and 2017 growing seasons and treated as control treatments, shown with grey color, in which conservation tillage, plant density of 69K and no irrigation were applied. The middle two rows of each plot were used for collecting yield data, while either row 3 or 6 were used for installing soil moisture sensors (Figure 3b).

All the treatments of plant density, tillage and irrigation are listed in Table 1 for both fields. The name of the treatment consists of a number that represents the plant density in thousands per ha. The letters S and V refer to conservation and conventional tillage respectively and the letter I is added to irrigated treatments.

Table 1. Plant density and tillage method treatments applied in RDC and SIRP fields.

Treatment	Plant Density (plants/ha)	Tillage	Irrigation	Field
69-S	69,000	Conservation	Not irrigated	SIRP
69-SI	69,000	Conservation	Irrigated	RDC and SIRP
69-VI	69,000	Conventional	Irrigated	RDC and SIRP
88-SI	88,000	Conservation	Irrigated	RDC and SIRP
88-VI	88,000	Conventional	Irrigated	RDC and SIRP
99-SI	99,000	Conservation	Irrigated	RDC and SIRP
99-VI	99,000	Conventional	Irrigated	RDC and SIRP
133-SI	133,000	Conservation	Irrigated	RDC and SIRP
133-VI	133,000	Conventional	Irrigated	RDC and SIRP

Two different methods of irrigation scheduling were implemented based on the geographical location of the field, the UGA maize checkbook method at the RDC field and a sensor-based method at the SIRP field.

The UGA checkbook method (moisture balance method) is the simplest way of scheduling maize irrigation. It was developed by multiplying the FAO-56 crop coefficient (K_c) value by the historical average evapotranspiration (ET) data from the southern portion of Georgia. The checkbook method requires basic information such as soil type, soil water holding capacity, expected daily water use of maize, and rainfall information in order to be used. An example of a checkbook method showing the daily water use (mm) of maize in Georgia, USA, is presented in Figure 4 [29]. Rainfall and irrigation data were tracked throughout each week. Irrigation per week was divided by the number of days that is feasible to irrigate during a given week. For instance, if a system needed three days to make a full irrigation application across the entire field, irrigation could take place only twice per week. Moreover, if the required amount of water per week was 50 mm, then 25 mm of water was applied in each application by the system. A center pivot was used for irrigating, and the irrigation was uniform across the entire RDC field. Soil moisture was recorded by three watermark sensors at depths of 20 cm, 41 cm, and 61 cm, constituting one node (Figure 5). Two nodes were installed per treatment for collecting Soil Water Tension (SWT), and their location is shown with blue circles in Figure 2. However, the soil moisture data were used only for data logging at RDC and not for irrigation scheduling.

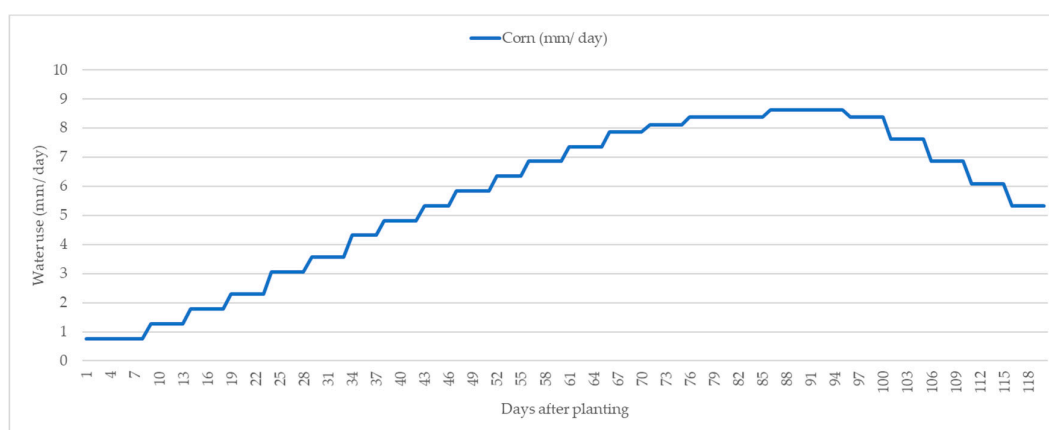


Figure 4. Water use (mm) of maize per day in Georgia.

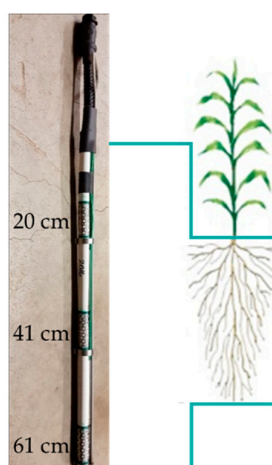


Figure 5. Node of three watermark soil moisture sensors located at depths of 20 cm, 41 cm, and 61 cm.

The availability of the 7000 VRI from Advance Ag Systems at the SIRP field allowed the application of different irrigation requirements to individual treatments. Thus, a sensor-based irrigation scheduling

method was implemented at the SIRP field where a lateral irrigation system was used, and VRI treatments were applied such that each treatment was irrigated independently based on treatment average SWT data. This means that the VRI was used as an “on” and “off” system depending on the soil moisture sensor indications. The VRI system could control nine zones. The zones 1–5 and 8–9 had seven sprinklers, while the zones 6 and 7 had eight sprinklers. The lateral irrigation system was travelling with a speed 18% for applying 19.05 mm of water while irrigating.

The sensor-based method was used for collecting soil moisture data from the different depths (20 cm, 41 cm, and 61 cm). Two nodes were installed in each treatment, as shown with the blue circles in Figure 3, and hourly readings were collected every day. The readings at 7:00 a.m., close to a pre-dawn optimal threshold, were used for irrigation scheduling decisions. A weighted depth average was calculated by applying the SWT readings from the three depths to Equation (1). The total average of the SWT value of each sensor was determined by the weighted percentage (α , β , γ) that it was multiplied by (Table 2). These percentages were based on the plants’ rooting depth, which was correlated to accumulated Growing Degree Days (GDDs) based on previous research [30–32]. For instance, at the beginning of the growing season, there was a focus on the SWT values of the two soil moisture sensors located at 20 cm and 41 cm because the plants’ roots had not grown deeper than 41 cm into the soil profile. However, as shown in Table 2, the percentages of the three soil moisture sensors at the different depths were changed throughout the maize growing season depending on the growth and development of the plants and their rooting system. A weighted average threshold of 30 kPa–35 kPa was set as the trigger point for scheduling the irrigation events to each treatment [33].

$$\text{SWT Weighted Average} = \alpha \times \text{SWT}_{20\text{cm}} + \beta \times \text{SWT}_{41\text{cm}} + \gamma \times \text{SWT}_{61\text{cm}} \quad (1)$$

where α , β , and γ are the weighted percentages used throughout the season based on the growth stage of the maize (Table 2).

Table 2. Weighted percentages of each sensor according to the Growing Degree Days (GDDs).

GDDs (°C)	α (20 cm)	β (41 cm)	γ (61 cm)
0–354	0.80	0.20	0.00
355–724	0.60	0.30	0.10
725–878	0.50	0.30	0.20
879–1099	0.50	0.25	0.25
1100–end of irrigation	0.40	0.30	0.30

Weather data such as rainfall, solar radiation, and temperature were downloaded daily from the University of Georgia weather network [34]. Rainfall data was used for irrigation scheduling while the temperature data was used for estimating the GDDs by using Equation (2) [35]. In the case that the daily maximum and/or minimum temperature was less than 10 °C, then it was set equal to 10 °C. If the daily maximum temperature was higher than 30 °C, then it was set equal to 30 °C.

$$\text{Maize GDD} = \text{Daily Average Temperature (°C)} - 10 \text{ °C} \quad (2)$$

A statistical analysis was performed for each field independently with JMP[®] Pro 14.1.0 to determine significant differences on the response variables between the treatments during each year of the project separately and by combining the three years of the experiment together. The comparison of means was done by using Tukey–Kramer HSD test. In the RDC field the response variable was yield, while in the SIRP field the response variables were yield and irrigation. Factors such as calendar year (meaning the location of maize plots in the fields due to the rotation protocol and the different weather conditions that occurred throughout each growing season), tillage method, plant density, and irrigation were checked on how they affected the response variables with the factorial to two-degree model.

3. Results

3.1. SWT and Irrigation

Decisions about irrigation for the RDC field were made based on the checkbook method and when an irrigation event was scheduled, the same amount of water was applied to all treatments. However, soil moisture sensors were installed to record the SWT of each treatment and these data, together with the water that was received daily either through applied irrigation or rainfall, are shown in Figure 6a,b for the conservation and conventional tillage methods respectively. Conversely, the treatments at the SIRP field were irrigated based on the daily SWT data obtained at 7:00 AM from the soil moisture sensors installed in the field. Consequently, each treatment was irrigated independently, once it approached the SWT threshold, with the use of a VRI system. Figures 7 and 8 show the graphs of SWT data and the water that was received through applied irrigation and rainfall by each treatment separately for the conservation and conventional tillage methods respectively at the SIRP field. The x-axes in Figures 6–8 represent the dates that the experiment was conducted. The x-axes are separated into the three years of the project, 2015, 2016, and 2017, and within those years are the dates of the maize season from planting to harvesting. The SWT data is presented on the primary y-axis, which show the soil moisture level in kPa, i.e., the higher the SWT the drier the soil. The color lines represent the SWT of each treatment and they match the color of the treatment as it is shown in Figures 2 and 3. The soil moisture sensors were installed during the early vegetative stages of maize, between V1 and V4, and removed a few weeks before harvest, which explains the gaps with no data at the beginning and end of each growing season in the graphs in Figures 6–8. There are, also, a few gaps with no data during the growing seasons which are due to the soil moisture sensor system's failure. The red dashed line represents the threshold of 35 kPa for scheduling irrigation events for each treatment. There was an effort at the SIRP field to keep the SWT below that threshold. The daily water received (mm) either through applied irrigation (dark blue bars) or rainfall (light blue bars), is shown on the secondary y-axis. Figures 6–8 show that the SWT dropped when a rainfall and/or irrigation event took place, while it increased when plants were using water and there was nothing applied or received.

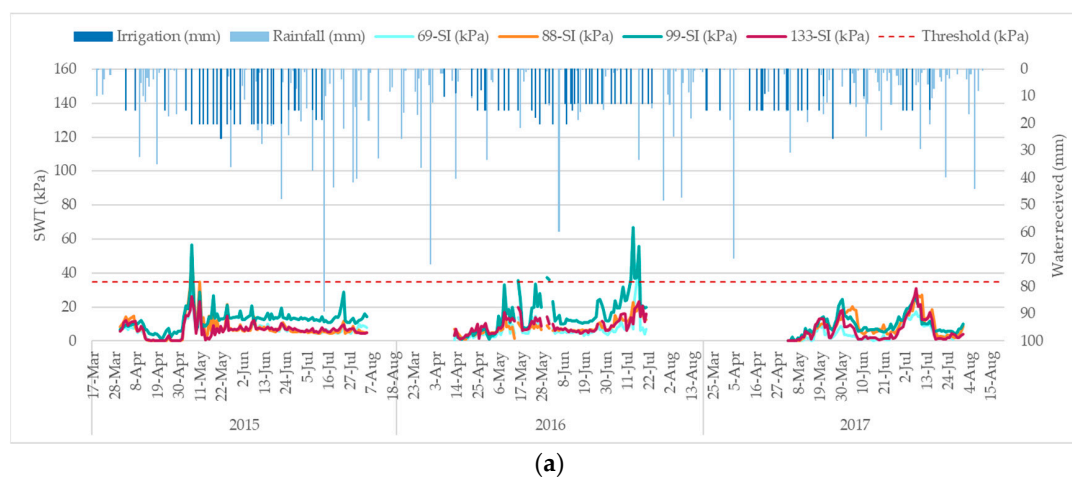


Figure 6. Cont.

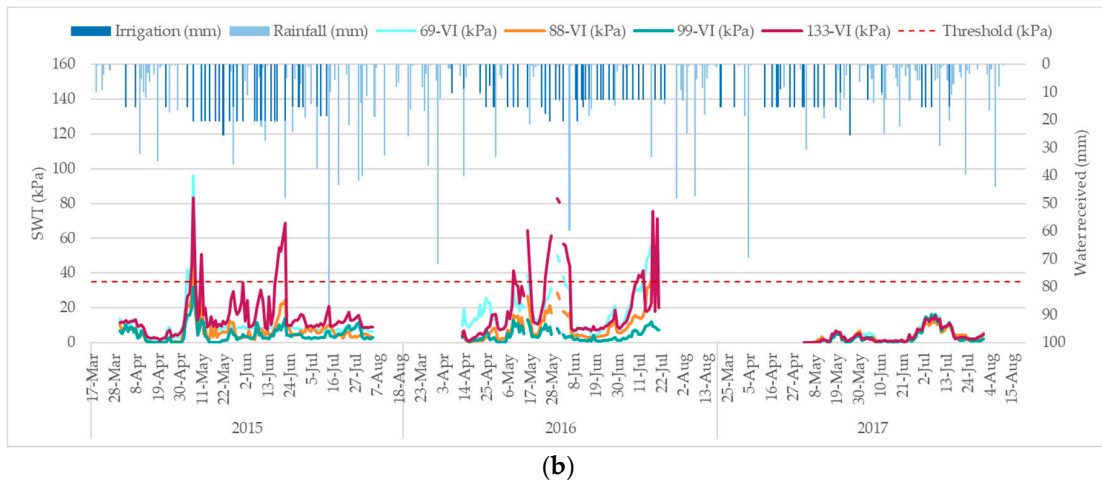


Figure 6. Daily average Soil Water Tension (SWT) data for each plant density and total amount of water received through applied irrigation or rainfall in (a) conservation and (b) conventional tillage during 2015, 2016, and 2017 growing seasons.

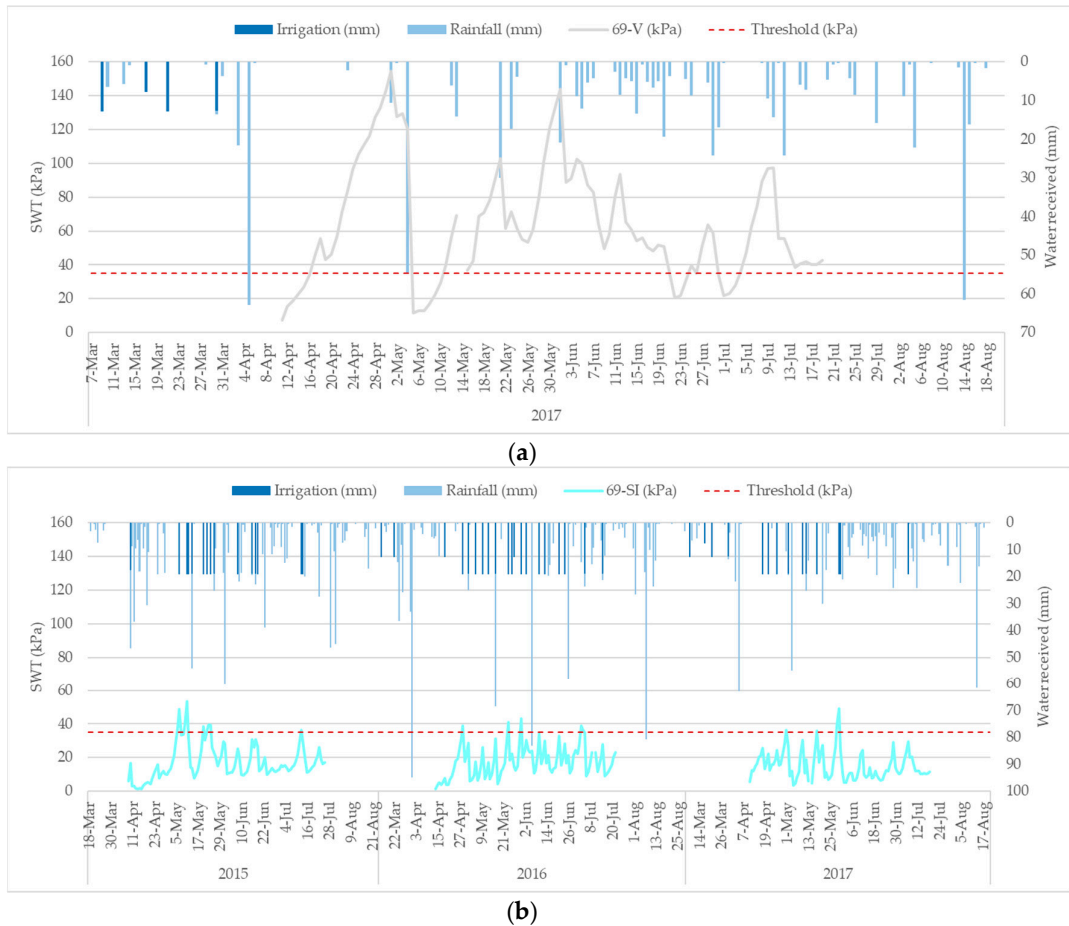


Figure 7. Cont.

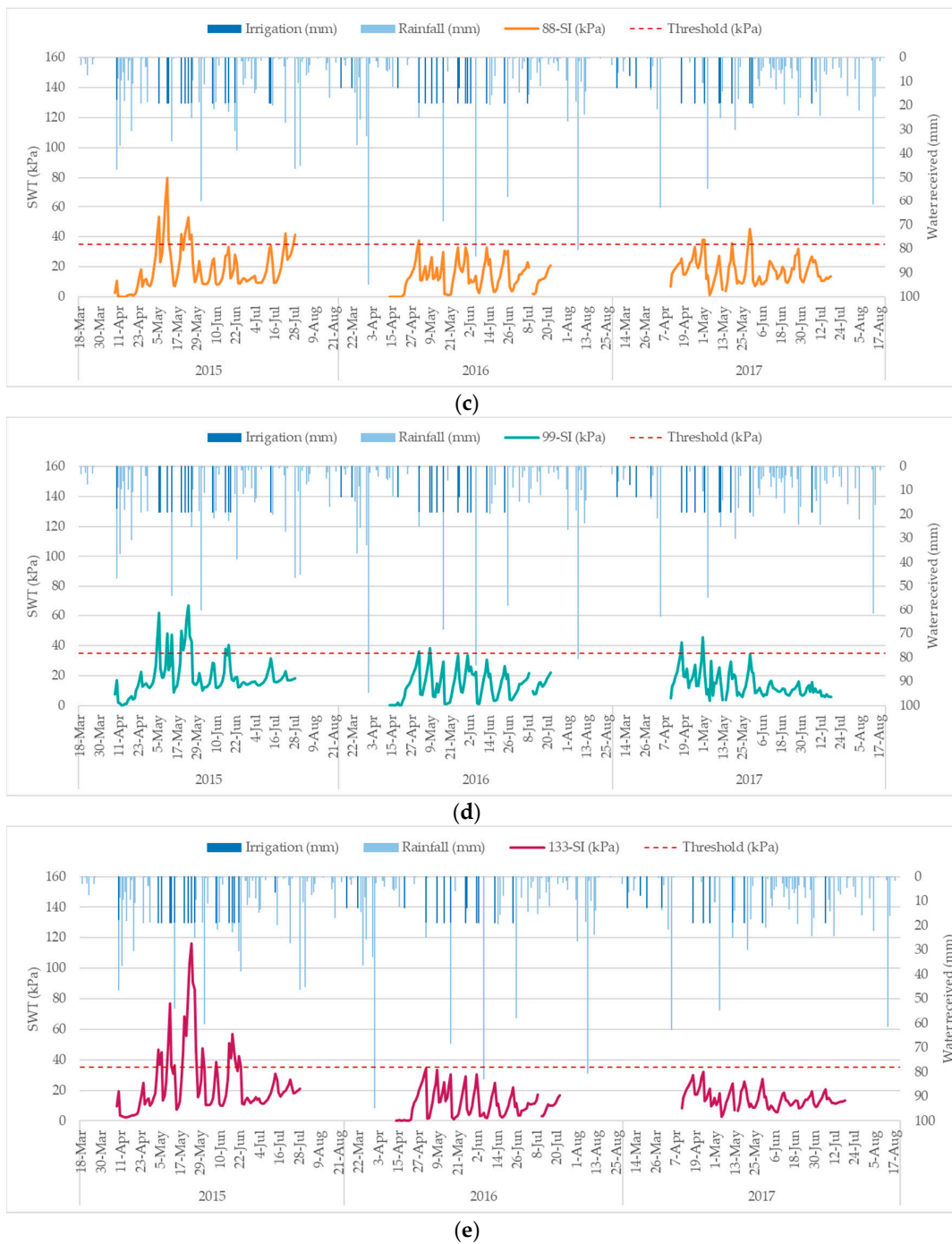


Figure 7. Daily average SWT data for the dryland treatment (a) 69K plants/ha, and the irrigated treatments (b) 69K plants/ha, (c) 88K plants/ha, (d) 99K plants/ha, and (e) 133K plants/ha in conservation tillage and total amount of water received through applied irrigation or rainfall during 2015, 2016, and 2017 growing seasons.

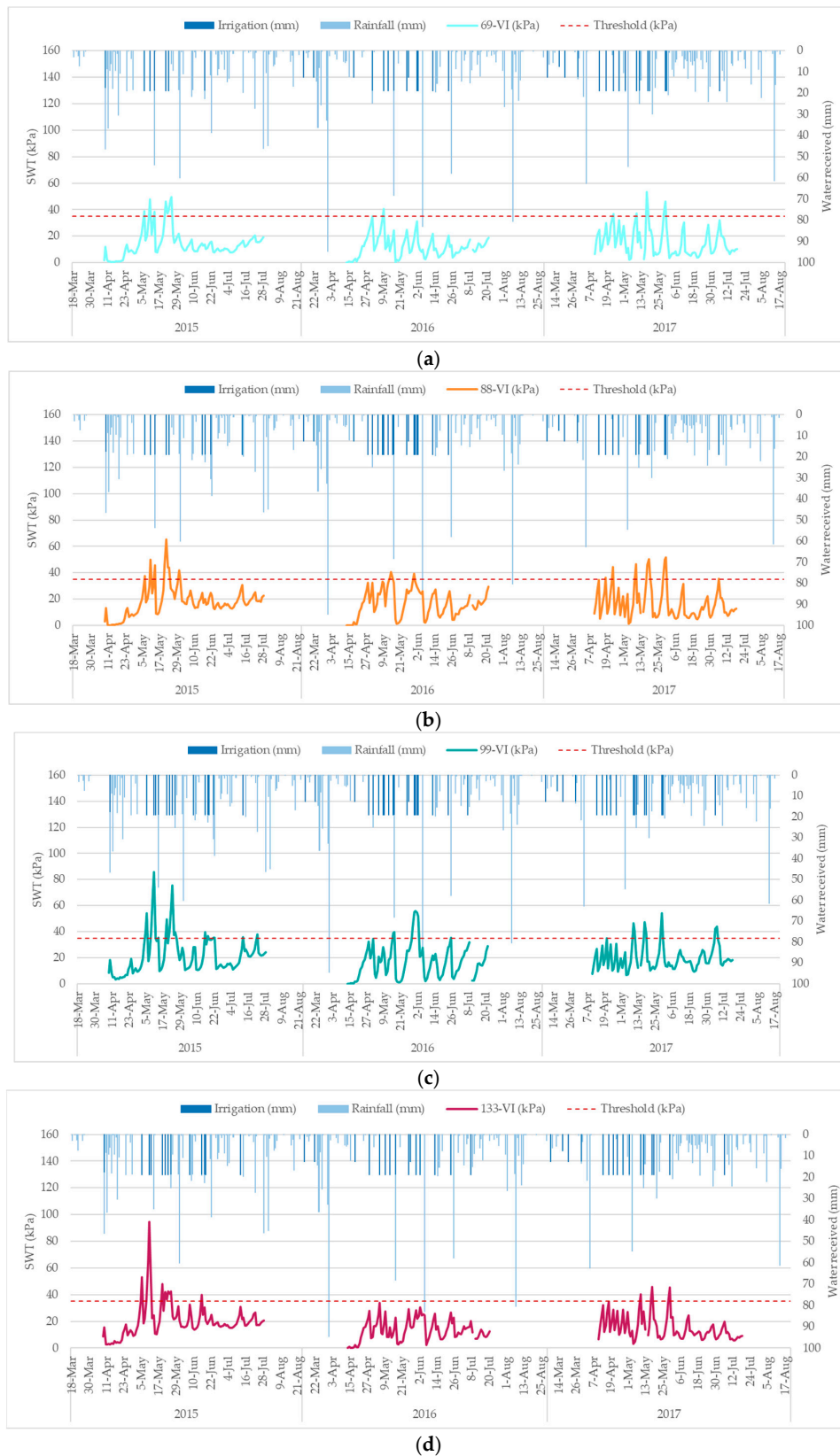


Figure 8. Daily average SWT data for (a) 69,000 plants/ha, (b) 88,000 plants/ha, (c) 99,000 plants/ha, and (d) 133,000 plants/ha in conventional tillage and total amount of water received through applied irrigation or rainfall during the 2015, 2016, and 2017 growing seasons.

During the first two years of the experiment, on both conservation and conventional tillage methods at the RDC field, there were specific periods where some treatments had surpassed the threshold line indicating dry conditions (Figure 6). However, these were small periods and generally there was adequate water received either through irrigation or rainfall. This did not occur during the third year of the experiment where no treatment surpassed the threshold line.

Figure 7a, refers to the non-irrigated treatment with a 69K plant density and conservation tillage method (69K-S). Soil moisture sensors were installed in that treatment only during the 2017 growing season. It was observed that the SWT dropped when a rainfall event occurred, but it was mostly above the threshold because the amount of water through rainfall was not sufficient. Figure 7b–e refer to the irrigated treatments of the 69K, 88K, 99K, and 133K plant densities per hectare respectively, that were under conservation tillage. These graphs show that there were periods during the 2015 growing season, especially between April and May, where the soil was continually getting drier even if there were irrigation and rain events. During the 2016 and 2017 growing seasons, the threshold was not surpassed for most of the entire growing season.

The graphs presented in Figure 8 show the SWT and the water received by the different plant density treatments in the conventionally tilled plots of the SIRP field. Figure 8a–d refer to the 69K, 88K, 99K, and 133K plant densities per hectare respectively. In general, during 2015 and 2017 there were more dry periods in comparison to 2016.

Figure 9 shows how the SWT and, consequently, the irrigation applied were affected by the four plant densities and the two tillage methods during the three years of the project. On the y-axes of Figure 9a,b the SWT and irrigation are presented respectively while the four plant densities are shown on the x-axes in both graphs. The SWT had values between 5 kPa and 30 kPa, which means that it was kept below the threshold of 35 kPa during the three years of the project. The blue and red colors represent the conservation and conventional tillage methods respectively and the dots show the values of SWT and irrigation based on each treatment, i.e., tillage method and plant density together. The lines show an average SWT and irrigation of each treatment between the three years of the project. In both graphs the pattern of SWT and irrigation based on the treatment were very similar, because as the SWT was getting higher the plots were irrigated. Regarding the conservation tillage, the SWT and irrigation had a downward trend, meaning that the plots with plant density of 69K plants/ha were drier and more irrigation was applied in comparison to higher plant densities. However, the line of conventional tillage shows an upward trend as the plant densities increased with a peak at 99K plants/ha and then a downward trend for the plant density of 133K plants/ha.

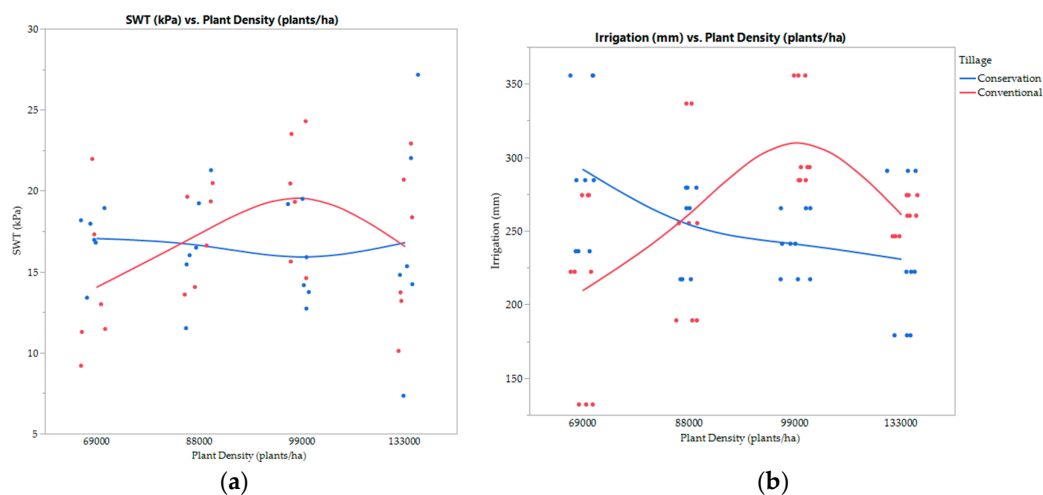


Figure 9. Correlation between (a) SWT (kPa), and (b) irrigation (mm) with plant density and tillage method in SIRP field.

3.2. Irrigation and Yield

Figures 10 and 11 show the maize yield (kg/ha) results of each treatment per year from the RDC and SIRP fields respectively along with the total water received via rainfall and irrigation (mm), on the primary and secondary y-axes respectively. The primary x-axes show the three years that the project was conducted and within each year the treatments based on tillage method and plant density are presented. Figures 10 and 11 show the statistical results by analyzing each year separately from the RDC and SIRP fields respectively. Bars with different letters within the same year are significantly different.

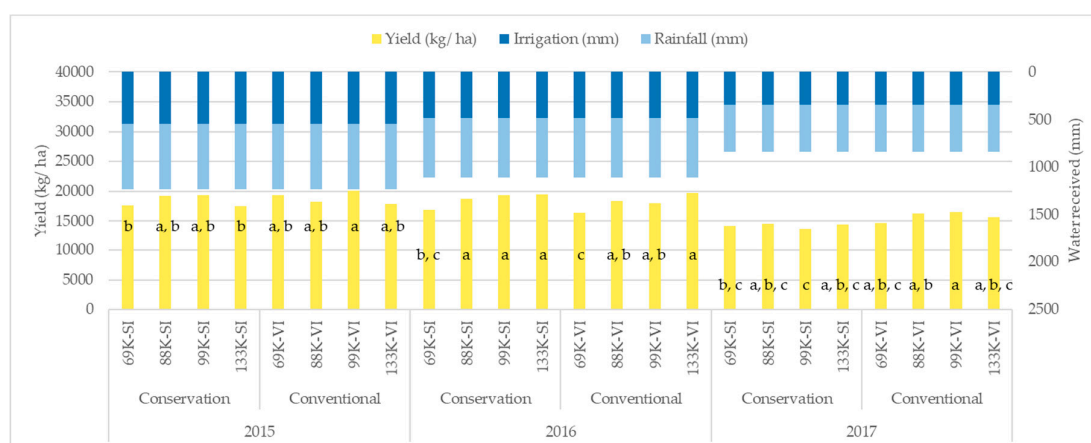


Figure 10. Yield (kg/ha) produced in RDC field by each treatment and the total amount of water (mm) received by each treatment per growing season.

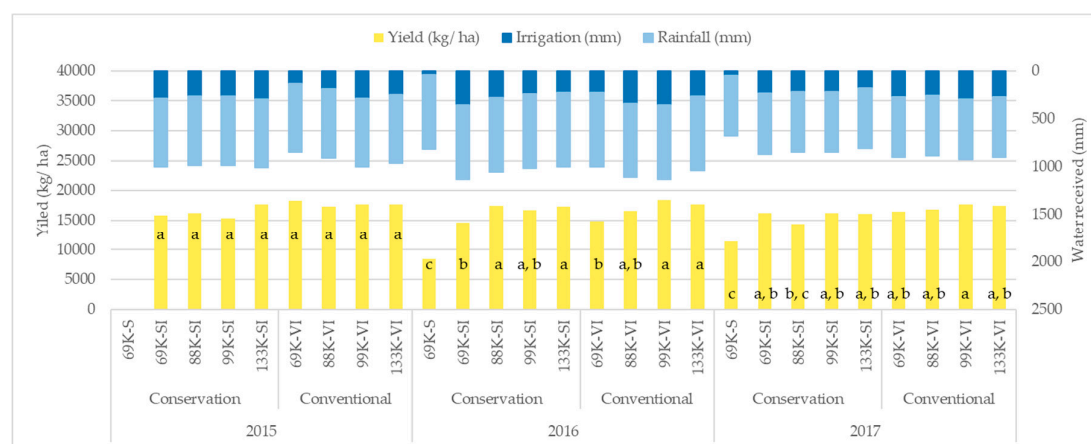


Figure 11. Yield (kg/ha) produced in SIRP field by each treatment and the total amount of water (mm) received by each treatment per growing season.

In the RDC field the total water received was the same for all the treatments within the same year (Figure 10) because they were irrigated equally based on the checkbook method. However, the total water received differs from year to year due to different weather conditions. More water was received during 2015 and 2016 than during the 2017 growing season. Additionally, those two years were generally more productive growing seasons than 2017. In 2015 the highest yield was produced by the 99K-VI while the lowest by 133K-SI treatment. The highest yield in 2016 was achieved by 133K-VI while the lowest by 69K-VI treatment. As for 2017, 99K-VI produced the highest yield while 99K-SI produced the lowest. The statistical analysis showed that during the 2015 growing season there were significant differences in terms of yield between the 69K-SI and 99K-VI, and 133K-SI and 99K-VI treatments. As for the 2016 growing season, there were significant differences between 69K-SI and 88K-SI, 99K-SI, 133K-SI, and 133K-VI, and between 69K-VI and all the other treatments except 69K-SI.

During the 2017 growing season there were significant differences between 69K-SI and 99K-VI, and between 99K-SI and 99K-VI. The statistical analysis also showed that the tillage method and plant density behaved differently according to different years. During the 2015 and 2016 growing seasons, the plant density was the factor that significantly affected the yield with p -values of 0.0032 and <0.0001 respectively. The tillage method ($p\text{-value}_{2015} = 0.2007$, $p\text{-value}_{2016} = 0.0671$) and the interaction between tillage method and plant density ($p\text{-value}_{2015} = 0.0730$, $p\text{-value}_{2016} = 0.2310$) did not have a significant effect on the final yield. During the 2017 growing season, tillage method ($p\text{-value} < 0.0001$) was the only factor that had a significant effect on the final yield. Neither plant density ($p\text{-value} = 0.2684$) nor the interaction between tillage method and plant density ($p\text{-value} = 0.0977$) had a significant effect on the final maize yield in 2017.

Figure 11 shows the yield results and the water received (irrigation plus rainfall) per treatment during each year of the project at the SIRP field. The amount of water applied through irrigation differed from treatment to treatment and from year to year for the same treatment because the treatments were irrigated independently when the soil moisture sensors indicated SWT values approached the threshold of 35 kPa. In 2015, among the irrigated treatments, the 69K-VI treatment had the highest yield and the lowest amount of irrigation applied while the lowest yield was observed in 99K-SI treatment. However, those differences are not statistically significant. The treatment with the most irrigation applied to it was the 133K-SI. During 2016, the 99K-VI treatment produced the highest yield while the 69K-SI produced the lowest yield even though the highest amount of irrigation was applied. The statistical analysis showed that there were significant differences between the 69K-SI and 88K-SI, 133K-SI, 99K-VI, and 133K-VI treatments, and between the 69K-VI and 88K-SI, 133K-SI, 99K-VI, and 133K-VI treatments. The non-irrigated 69K-S treatment was significantly different from all of the other treatments. The treatments with the least amount of irrigation were the 133K-SI and 69K-VI which received the same amount of irrigation. During 2017, 99K-VI produced the highest yield and it received the most water while 88K-SI produced the lowest yield among treatments, and it was significantly different from the 99K-VI treatment. The non-irrigated treatment produced the lowest yield and was significantly different from all treatments during the 2017 growing season. The lowest amount of irrigation was applied to 133K-SI. The non-irrigated 69K-S treatment produced the lowest yield in comparison to all the other treatments during the 2016 and 2017 growing seasons as expected. During 2015, due to space limitations, the non-irrigated treatment did not exist, which explains why there is no irrigation and yield data for that year. The graph also shows that the non-irrigated treatment received some irrigation. This was during the beginning of the growing season due to strictly for fertilizer application activation. The statistical analysis, performed for each year separately, showed that tillage method had a significant effect on the final maize yield during 2015 ($p\text{-value} = 0.0167$) and 2017 ($p\text{-value} = 0.0054$) but not during 2016 ($p\text{-value} = 0.02698$). The plant density treatment had significant effects on the final yield during 2016 ($p\text{-value} < 0.0001$) but not during 2015 ($p\text{-value} = 0.4905$) and 2017 ($p\text{-value} = 0.1584$). Additionally, the interaction between tillage method and plant density did not have a significant effect on the final yield during any of the three years of the project ($p\text{-value}_{2015} = 0.3587$, $p\text{-value}_{2016} = 0.1039$ and $p\text{-value}_{2017} = 0.4000$). Figures 12 and 13 show the average yield per treatment for all the three years of the project for the RDC and SIRP fields respectively. Figure 13 shows the average water (irrigation plus rainfall) in mm that was received by each treatment during the entirety of the experiment in SIRP field. In all the graphs, yield in kg/ha is shown with the yellow bars while irrigation and rainfall are shown with dark and light blue bars respectively. Figures 12 and 13 show, also, the statistical analysis that was performed by combining the three years together.

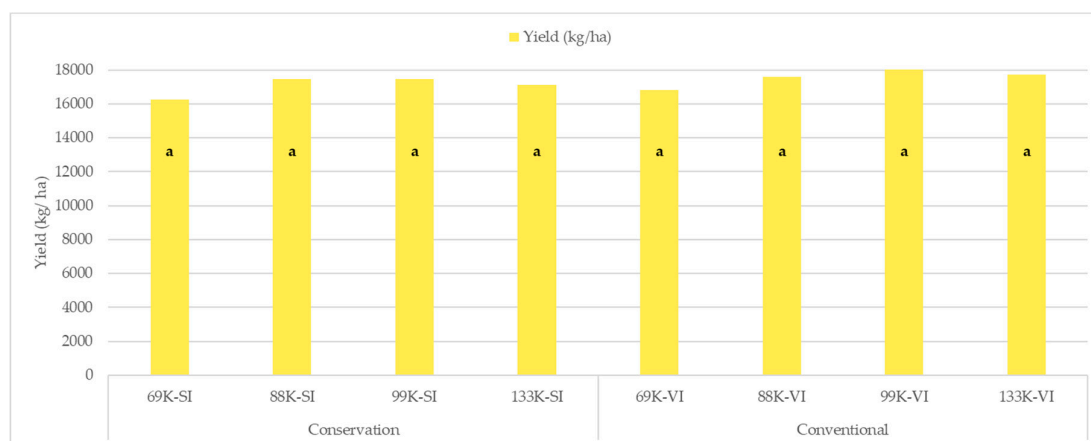


Figure 12. Three years' average yield (kg/ha) produced in RDC field by each treatment and statistical analysis results.

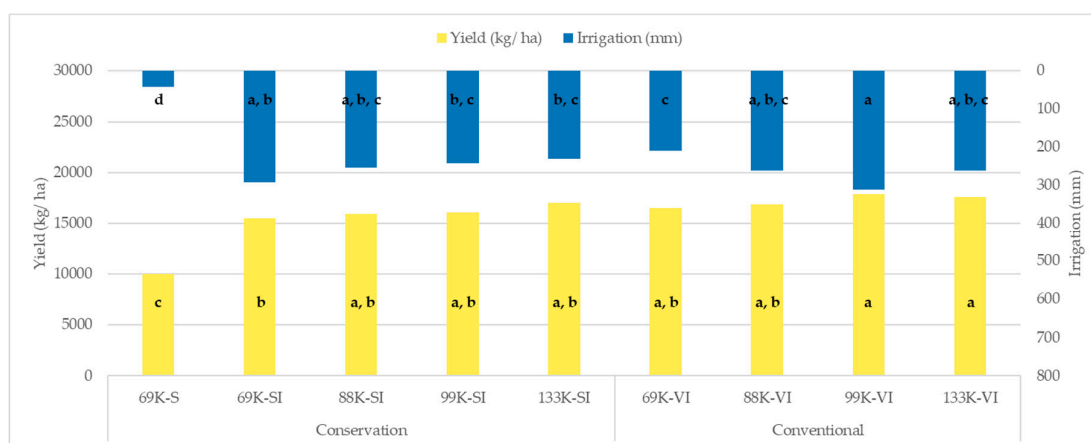


Figure 13. Three years' average yield (kg/ha) produced in SIRP field by each treatment and statistical analysis results.

Figure 12 represents the yield results of each treatment from the RDC field by averaging the three years together. The highest yield was produced by the 99K-VI while the lowest by the 69K-SI treatment. However, when averaged, the difference in yields is not significant and all treatments had similar yield results. The statistical analysis showed that year, tillage method, plant density, and the interaction between year and tillage method significantly affected the final yield with *p*-values of <0.0001, 0.0256, 0.0009, and 0.0018 respectively. However, the interaction between tillage method and plant density (*p*-value = 0.7753) was not significant on the final maize yield.

Figure 13 shows the average yield and irrigation results from the three years of the project for each treatment along with the statistical analysis. Among the irrigated treatments, the 99K-VI treatment produced the highest yield while the 69K-SI treatment produced the lowest. The 99K-VI treatment received the most irrigation while the 69K-VI treatment received the least. As shown by the different letters, there were significant differences in terms of yield between 69K-SI and 99K-VI as well as between 69K-SI and 133K-VI. The non-irrigated 69K-S treatment was significantly different from the other treatments. In terms of irrigation applied, there were significant differences between the 69K-SI and 69K-VI, 99K-SI and 99K-VI, 133K-SI and 99K-VI, and 69K-VI and 99K-VI treatments. The statistical analysis showed that tillage method (*p*-value = 0.0001), plant density (*p*-value = 0.0038), and interaction between year and plant density (*p*-value = 0.0077) had significant effects on the final maize yield. However, year (*p*-value = 0.1570), amount of applied irrigation (*p*-value = 0.5277), and interactions between year and tillage (*p*-value = 0.1856), and tillage and plant density (*p*-value = 0.3271)

did not have a significant effect on the final maize yield. Furthermore, the statistical analysis showed that the applied irrigation was significantly affected by the year (p -value < 0.0001), plant density (p -value = 0.0002) and interactions between year and tillage method (p -value < 0.0001), year and plant density (p -value < 0.0001), and tillage method and plant density (p -value < 0.0001). The only variable that was not significant with applied irrigation was the tillage method (p -value = 0.2219).

Table 3 presents the aggregated results from both fields including rainfall (mm), irrigation (mm) and yield (kg/ha) for each year of the project. The maize received more rainfall at the SIRP field than the RDC field during all three growing seasons. The difference in rainfall varies from 34 mm to 147 mm. However, the maize had less irrigation at SIRP in comparison to the RDC field during all years of the project. This difference varied from 48 mm to 413 mm based on year and treatment. Moreover, most of the treatments performed slightly better, in terms of yield, at the RDC field during the 2015 and 2016 seasons while the yield results were better in at SIRP during the 2017 growing season.

Table 3. Rainfall, irrigation and yield results for 2015, 2016, and 2017 growing seasons in RDC and SIRP fields.

Treatment	RDC Field			SIRP Field		
	Rainfall (mm)	Irrigation (mm)	Yield (kg/ha)	Rainfall (mm)	Irrigation (mm)	Yield (kg/ha)
2015						
69-S						
69-SI			17,670.63		284.48	15,782.86
88-SI			19,200.38		265.43	16,221.08
99-SI			19,379.08		265.43	15,315.94
133-SI			17,511.30		290.83	17,714.97
69-VI	683.04	545.08	19,395.65	717.80	132.08	18,267.99
88-VI			18,218.25		189.23	17,297.60
99-VI			20,122.18		284.48	17,726.68
133-VI			17,844.40		246.38	17,694.81
2016						
69-S					38.1	8466.99
69-SI			16,846.48		355.6	14,566.94
88-SI			18,693.00		279.4	17,388.33
99-SI			19,322.53		241.3	16,755.03
133-SI			19,461.97	777.23	222.25	17,357.18
69-VI	629.88	478.79	16,377.11		222.25	14,819.54
88-VI			18,333.22		336.55	16,584.12
99-VI			18,031.94		355.6	18,394.99
133-VI			19,669.52		260.35	17,739.64
2017						
69-S					45.72	11,453.56
69-SI			14,228.83		236.22	16,144.77
88-SI			14,531.57		217.17	14,312.44
99-SI			13,695.75		217.17	16,172.10
133-SI			14,425.21	631.70	179.07	16,117.59
69-VI	491.74	341.63	14,736.25		274.32	16,465.48
88-VI			16,241.46		255.27	16,800.37
99-VI			16,551.87		293.37	17,678.14
133-VI			15,651.28		274.32	17,396.25

3.3. Weather Conditions

Weather data, such as rainfall, solar radiation and temperature were important in this study in order to take proper irrigation decisions. More specifically, rainfall data was collected daily in order to estimate the total water received per season and evaluate how the total amount of water received

affected the final maize yield. Also, it was essential in order to examine how the different tillage methods and population densities affected the irrigation. Seasons with high rainfall events might affect the solar radiation due to cloud cover, which can influence the final yield. Temperature data was important for estimating the accumulative GDDs that were in the sensor-based method (Equation (2)).

Figures 14 and 15 show the rainfall (mm) and solar radiation (MJ/m²) data [34] during the three growing seasons of the project in the areas of Tifton, GA, where the RDC field is located, and Camilla, GA, where the SIRP field is located, respectively. The three cultivation periods from planting to harvest are presented on the x-axes. The planting and harvesting days were not the same between the two fields as it is shown in the following graphs. The solar radiation (MJ/m²), with green, is shown on the primary y-axis while the amount of rainfall (mm) received, with blue, is shown on the secondary y-axis. In both graphs it was observed that the highest solar radiation values are between 25 and 30 MJ/m² while the lowest between 0 and 5 MJ/m². As expected, solar radiation decreased during precipitation events due to cloud cover.

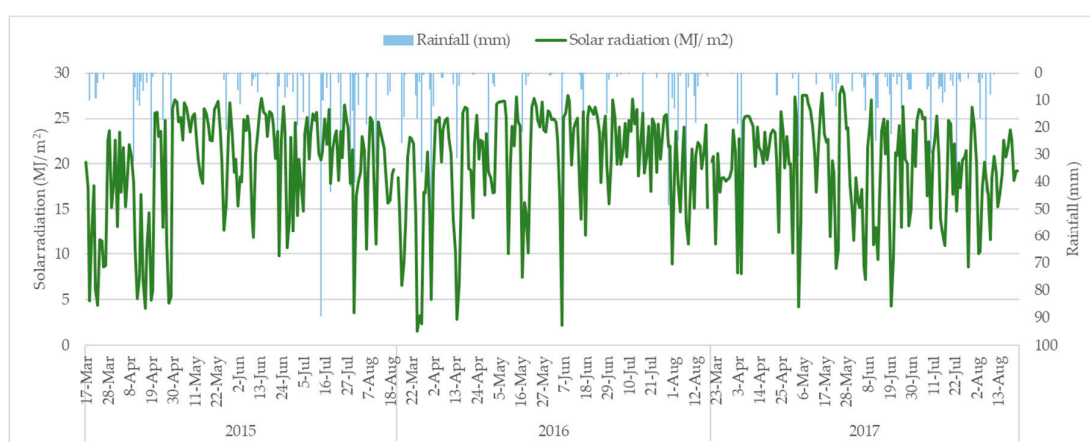


Figure 14. Rainfall (mm) and solar radiation (MJ/m²) in the area of Tifton, GA, where RDC field is located during the maize growing seasons of 2015, 2016, and 2017.

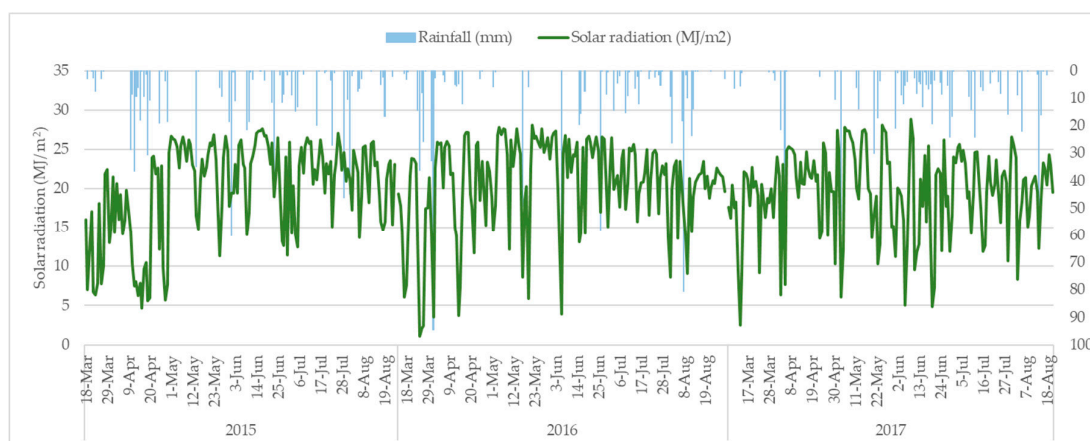


Figure 15. Rainfall (mm) and solar radiation (MJ/m²) in the area of Camilla, GA, where SIRP field is located during the maize growing seasons of 2015, 2016, and 2017.

Figures 16 and 17 show the temperature (°C) data [28] during the three years of the project in the Tifton, GA, where RDC field is located and Camilla, GA, where SIRP field is located respectively. The maximum (red), average (grey), and minimum (blue), daily temperatures are presented on the y-axes while the three growing seasons from 2015 to 2017 are shown on the x-axes. The temperatures

were lower at the beginning of the growing seasons and they were increased as the growing seasons were progressing.

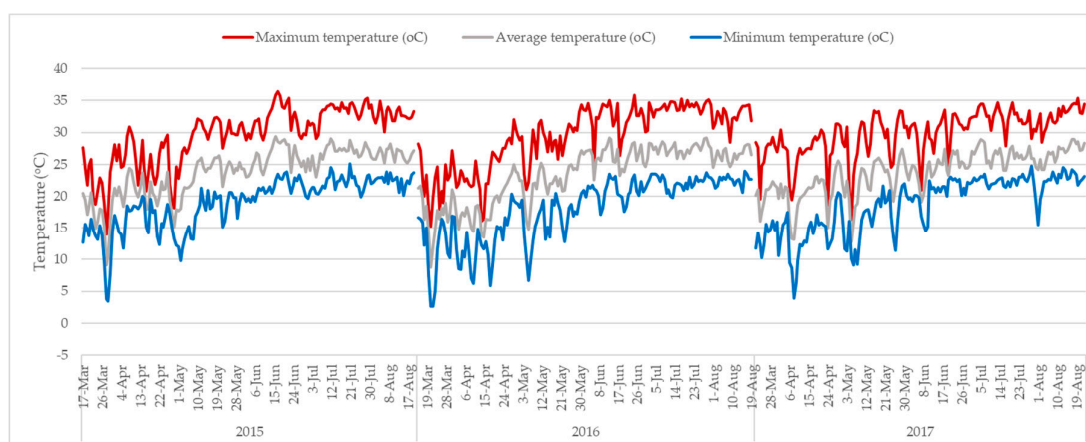


Figure 16. Maximum, minimum, and average temperatures (°C) in the area of Tifton, GA, where the RDC field was located during the maize growing seasons of 2015, 2016, and 2017.

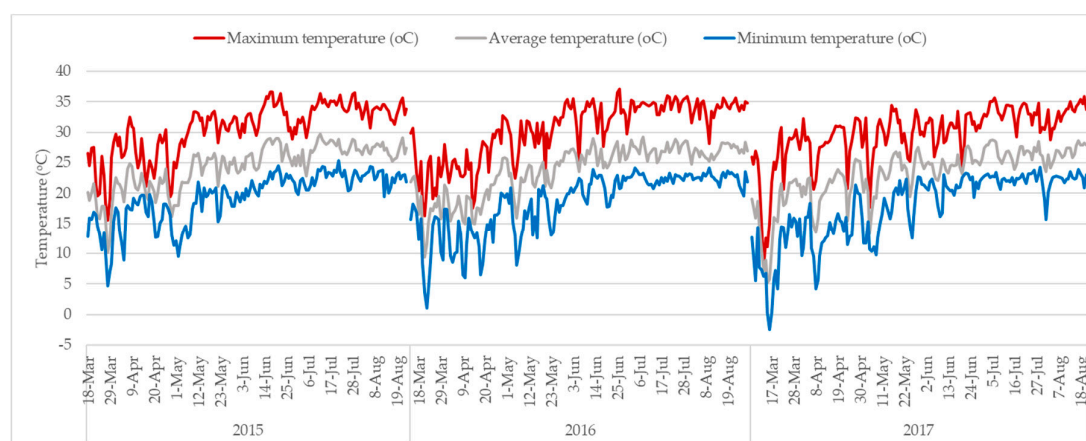


Figure 17. Maximum, minimum, and average temperatures (°C) in the area of Camilla, GA, where the SIRP field was located during the maize growing seasons of 2015, 2016, and 2017.

4. Discussion

Maize yield response to different management practices has created an intense research effort around the world. Practices such as irrigation scheduling methods, tillage systems, and plant densities have been put to a test in order to reach greater understanding on how to achieve high yields while increasing water use efficiency.

Irrigation is crucial in maize production. As this study showed, the non-irrigated treatment produced significantly less yield than the irrigated ones. The soil moisture sensors installed in the non-irrigated treatment, showed that the SWT remained above the irrigation threshold because adequate rainfall was not received. When there was a rain event, it was observed that the SWT was decreased in the treatment, however, the water received through rainfall was not adequate to lower the SWT below the threshold of 35 kPa. Due to the lack of adequate moisture, this treatment produced the lowest yields when compared to the irrigated treatments in the SIRP field. Previous studies have shown that irrigation increased crop yields not only in arid and semi-arid areas [36–39], but also in humid areas because of precipitation variability [40,41]. According to the University of Nebraska, irrigated maize yield averaged 12,547 kg/ha and non-irrigated averaged 11,084 kg/ha in Nebraska during 2017 [42]. Also, a study conducted in Missouri, which evaluated the effects of five plant densities

and irrigation on maize yield, showed that irrigated treatments had higher yield results [43]. Drought stress reduces canopy absorption of incident photosynthetically active radiation (PAR), radiation use efficiency (RUE), and harvest index (HI), which results to reduced yield of maize [44]. As a conclusion, irrigation is important in maize production because the lack of water affects the physiology of corn which results in yield reduction [45] and the adoption of an irrigation scheduling method and new technologies such as VRI system could assist producers to improve water use efficiency (WUE) [46].

Checkbook method and sensor-based method were chosen for irrigation scheduling in this study. However, a direct comparison in terms of irrigation applied and grain yield between the two methods cannot be done in this study because they were not applied in the same location, which means differences in weather conditions, soil, planting and harvesting dates. A previous study conducted in Southeastern North Dakota showed that the irrigation scheduling methods had similar seasonal irrigation amounts, but the water balance method had better yield results [47]. According to Kebede et al. [48] soil moisture sensors are recommended as a primary tool for irrigation scheduling.

In order to evaluate how the two methods of irrigation scheduling affected soil moisture, SWT data were recorded hourly. It was observed that during the growing seasons, there were some periods that the SWT was above an acceptable threshold for the soil type and maize production [33]. However, the SWT was kept between 0 kPa to 20 kPa at the RDC field, where the checkbook method was applied, for most of the entirety of the growing seasons. Alternatively, the SWT was kept between 0 kPa to 35 kPa at SIRP field. The SWT was lower in the RDC field because the checkbook method is typically considered very conservative and usually over-applies irrigation, beyond what the plant uses to ensure that irrigation is not the yield limiting factor. Due to this fact, the soil in the RDC field was wetter during all three growing seasons than the soil in the SIRP field. The rainfall received at the RDC field during 2015 was 34 mm less than the amount received at the SIRP field, but the amount of applied irrigation at the RDC field was on average 305 mm more than the amount applied to the SIRP field. Although similar results were observed during the next two years, the differences were not as drastic. These results come in agreement to Filho (2016) study, which was conducted in Alabama and it was observed that 29% more water was applied on average using the checkbook method in comparison to sensor-based method [49]. These differences suggest that less irrigation could have been applied to the RDC field by following a sensor-based method instead of a checkbook method.

Factors, such as the timing and amount of rainfall, soil texture and water holding capacity, could affect the need for irrigation and therefore the crop biomass and yield [50,51]. The fact that there was more rainfall received at SIRP compared to at RDC could have influenced the yield results as well, since there were more periods of clouds covering the sky affecting the solar radiation that plants were receiving. Plants can use only a small part (43%–50%) of the solar radiation spectrum which is reduced proportionally to cloud cover [4]. However, it is not possible to make a direct comparison between the two fields due to different planting and harvesting dates, but this is something that should be explored in future work.

When conservation tillage was utilized, the irrigation requirement was higher in lower plant densities and was reduced as the plant density increased. Contrary to conservation tillage, the conventional tillage treatment required lower irrigation rates at lower densities and had an increasing irrigation requirement for densities up to 99K plants/ha but was reduced for densities higher than 99K plants/ha. Even if each plant density of the conventionally tilled plots produced higher yields than the corresponding treatment within conservation tillage, the differences were not significant in either fields. A study conducted in Kansas from 2004 to 2007 showed that conservation tillage had greater yield results, slightly greater crop water use and retained more soil water during grain filling than conventional tillage [28]. The benefits of conservation tillage were even greater in terms of grain yield in years when irrigation requirements were greatest [28]. In south Kansas, a study showed that no-tillage increased grain yield by 0.5 Mg/ha and water productivity by 0.00096 Mg/ha under dryland and deficit-irrigated production [52]. A study in Iowa showed similar results between conservation and conventional tillage in terms of grain yield and water productivity [53].

Furthermore, it was observed that lower plant densities were able to have higher yield results in comparison to higher plant densities, which was observed in both fields by comparing the treatments individually within the years and the average yield of the three years together. Based on these results, higher plant densities, i.e., more plants per hectares, does not necessarily favor higher maize yields for the row configuration applied in this project. Maize was planted in wide rows (~1 m) and when the plant density was increased, the space between plants in the same row was decreased (intra-row competition). When high plant densities are utilized, plant distribution can be a limiting factor in wide rows minimizing yield potential [54]. Narrow rows would help to achieve equidistance space between maize plants [55] which would result to more efficient use of light and less soil evaporation [56]. Additionally, higher plant densities do not always require more water as the results from the SIRP field showed, which comes in contradiction to Tetio-Kagho and Gardner (1988) who stated that higher plant densities could increase water consumption because leaf area index is increased [57]. However, the results of Lamm et al. [28] showed that by increasing the plant density from 66K to 82K plant/ha had favorable results in grain yield but it did not increase seasonal water use while it increased water productivity.

The amount of irrigation applied can have significant effects on the final yield as it has already been mentioned about the non-irrigated treatment producing significantly lower yields compared to the irrigated treatments. A general conclusion from the RDC field is that more irrigation can produce higher yield results. More water was received during the 2015 and 2016 growing seasons, either through irrigation or rainfall, when compared to the 2017 growing season, and the treatments produced higher maize yields during the first two years than the third. This agrees with the results of Fang and Su (2019), which showed that plots received the highest irrigation achieved higher yields in comparison to other treatments that less irrigation was applied [58]. However, by comparing the same treatments between the years it was observed that more water did not necessarily mean higher yields. For example, in the conservation tillage the 133K plants/ha treatment produced more yield in 2016 than in 2015 when it received more water. This pattern can be seen easier in the SIRP field where treatment-based irrigation scheduling was applied based on the SWT data received from soil moisture sensors. Either by comparing the treatments within the years or the year average yields and irrigation, it is obvious that more water does not always lead to higher yields. Moreover, the statistical analysis shows that most of the yield results are not significantly different between each other in contradiction to the irrigation results. For instance, between the conventionally tilled treatments the 99K plant/ha produced the highest yield in comparison to the 69K plants/ha, which produced the lowest yield, but those results are not statistically different. However, the amount of applied irrigation to these two treatments is statistically different, with the 69K plants/ha treatment receiving less than the 99K plants/ha treatment. This is another indication that it is possible to achieve good yield results without applying large amounts of water through irrigation.

5. Conclusions

A three-year project between 2015 and 2017 was conducted at two sites in Georgia, U.S.A. in order to examine how different tillage methods and plant densities affect the final yield results based on to the method chosen for scheduling irrigation. The RDC and SIRP fields were the two sites located in Tifton and Camilla, GA, USA respectively. The maize hybrid P1916YHR (Pioneer, Johnston, IA, USA) was chosen and planted into conservation and conventional tilled plots at plant densities of 69K, 88K, 99K, and 133 plants/ha. The UGA checkbook method, which is based on historical evapotranspiration data and current rainfall, was utilized for making irrigation scheduling decisions at the RDC field and a SWT sensor-based method, which obtained data by soil moisture sensors located at 20 cm, 41 cm, and 61 cm deep in the soil, was utilized for making irrigation scheduling decisions at the SIRP field.

Both the checkbook and sensor-based methods had similar yield results. However, in the case of the checkbook method more irrigation is usually applied in wet years and less in dry years, because it is based on historical evapotranspiration data. Alternatively, the sensor-based method measured the

SWT of the soil in real time and provided valuable insights to better match the irrigation applications to the crop requirements. Even if irrigation is important for increasing maize yield production, as it was shown by comparing the dryland treatment to the irrigated ones, it was observed that there was not a linear relationship between the amount of water applied through irrigation and yield. Thus, increasing the amount of irrigation does not necessarily mean higher yields.

Furthermore, it was observed that higher populations do not necessarily require higher irrigation amounts and they do not always have favorable results in terms of yield. In both fields, the plant density of 99K plants/ha produced the highest yield in comparison to the other treatments. However, this difference was not statistically significant, which means that by choosing another treatment, such as the 88K plants/ha which required less water than the 99K plants/ha, may be a more profitable option.

In most cases the conventional tillage plots produced higher yield in comparison to conservation plots. However, the differences between them were not statistically significant, which leads to the conclusion that conservation tillage could be a good solution for farmers, not only for preserving water, but also for achieving acceptable yield results.

Author Contributions: A.O. and D.P. worked on the collection and analysis of the data as well as writing and editing the paper. W.M.P. was the lead scientist for this article, he developed the treatments and conducted the research for this project.

Funding: This research was funded partially by the Georgia Commodity Commission for Corn and by DuPont Pioneer a Corteva Company (Wilmington, DE, USA).

Acknowledgments: The authors would like to acknowledge the help and support of the Farm Managers and crew at the Stripling Irrigation Research Park, and the Tifton Farm Services for production.

Conflicts of Interest: The authors declare no conflict of interest.

References

1. Manzoor, N.; Anjum, S.A.; Akbar, N.; Ali, I.; Shakoor, A. *Optimum Plant Population and Crop Productivity. Role of Plant Population for Crop Productivity—AgriHunt*; Agro-biology Laboratory, Department of Agronomy, University of Agriculture: Faisalabad, Pakistan, 2016.
2. Vories, E.D.; Tacker, P.L.; Lancaster, S.W.; Glover, R.E. Subsurface drip irrigation of corn in the United States Mid-South. *Agric. Water Manag.* **2009**, *96*, 912–916. [[CrossRef](#)]
3. USDA-NASS. Data and Statistics. Available online: <https://quickstats.nass.usda.gov/> (accessed on 2 July 2017).
4. Pioneer. Solar Radiation in Corn Production. Available online: <https://www.pioneer.com/home/site/us/agronomy/library/solar-radiation-corn-production/> (accessed on 24 June 2019).
5. Duncan, W.G.; Shaver, D.L.; Williams, W.A. Sunlight and temperature effects on corn growth and yield. *Calif. Agric.* **1977**, *31*, 13–14.
6. Pioneer. High Night Temperature Effects on Corn Yield. Available online: <https://www.pioneer.com/home/site/us/agronomy/library/night-temperature-effects-corn-yield/> (accessed on 24 June 2019).
7. Traore, S.B.; Carlson, R.E.; Pilcher, C.D.; Rice, M.E. Bt and non-Bt maize growth and development as affected by temperature and drought stress. *Agron. J.* **2000**, *92*, 1027–1035. [[CrossRef](#)]
8. Payero, J.O.; Tarkalson, D.D.; Irmak, S.; Davison, D.; Petersen, J.L. Effect of timing of a deficit-irrigation allocation on corn evapotranspiration, yield, water use efficiency and dry mass. *Agric. Water Manag.* **2009**, *96*, 1387–1397. [[CrossRef](#)]
9. FAO. *Deficit Irrigation Practices*; Water Reports: Rome, Italy, 2002; p. 102.
10. Dieter, C.A.; Maupin, M.A.; Caldwell, R.R.; Harris, M.A.; Ivahnenko, T.I.; Lovelace, J.K.; Barber, N.L.; Linsey, K.S. *Estimated Use of Water in the United States in 2015*; U.S. Geological Survey Circular: Reston, VA, USA, 2018.
11. USGS. Water Science School. Available online: https://www.usgs.gov/special-topic/water-science-school/science/irrigation-water-use?qt-science_center_objects~0#qt-science_center_objects (accessed on 11 May 2019).
12. Simsek, M.; Can, A.; Denek, N.; Tonkaz, T. The effects of different irrigation regimes on yield and silage quality of corn under semi-arid conditions. *Afr. J. Biotechnol.* **2011**, *10*, 5869–5877.

13. Jones, H.G. Irrigation scheduling: Advantages and pitfalls of plant-based methods. *J. Exp. Bot.* **2004**, *55*, 2427–2436. [[CrossRef](#)]
14. Martin, E.C. *Methods of Measuring for Irrigation Scheduling-When*. Arizona Cooperative Extension; Arizona Water Series; The University of Arizona: Tucson, AZ, USA, 2009; No. 30.
15. Wright, J. *Irrigation Scheduling Checkbook Method*; University of Minnesota: Minneapolis, MN, USA, 2002.
16. Harrison, K.; Lee, D. *Scheduling and Managing Corn Irrigation*; A Guide to Corn Production in Georgia; The University of Georgia College of Agricultural and Environmental Sciences: Athens, GA, USA, 2007; pp. 36–39.
17. Shortridge, J. *Irrigation Scheduling in Humid Climates Using Checkbook Method*; Virginia Cooperative Extension; Virginia State University: Petersburg, VA, USA, 2018.
18. Vellidis, G.; Tucker, M.; Perry, C.; Reckford, D.; Butts, C.; Henry, H.; Liakos, V.; Hill, R.W.; Edwards, W. A Soil Moisture Sensor Based Variable Rate Irrigation Scheduling System. In *Precision Agriculture '13*; Wageningen Acad Publ: Wageningen, The Netherlands, 2013; pp. 713–720.
19. Karasahin, M. Effects of different irrigation methods and plant densities on nitrogen and irrigation water use efficiency in silage corn production. *Crop Res.* **2014**, *47*, 33–39.
20. Tollenaar, M.; Lee, E.A. Yield potential, yield stability and stress tolerance in maize. *Field Crop. Res.* **2002**, *75*, 161–169. [[CrossRef](#)]
21. Lee, E.A.; Tollenaar, M. Physiological basis of successful breeding strategies for maize grain yield. *Crop Sci.* **2007**, *47*, 202–215. [[CrossRef](#)]
22. Tokatlidis, I.S.; Koutroubas, S.D. A review of maize hybrids' dependence on high plant populations and its implications for crop yield stability. *Field Crop. Res.* **2004**, *88*, 103–114. [[CrossRef](#)]
23. Tollenaar, M.; Wu, J. Yield improvement in temperate maize is attributable to greater stress tolerance. *Crop Sci.* **1999**, *39*, 1597–1604. [[CrossRef](#)]
24. Tollenaar, M.; Deen, W.; Echarte, L.; Liu, W. Effect of crowding stress on dry matter accumulation and harvest index in maize. *Agron. J.* **2006**, *98*, 930–937. [[CrossRef](#)]
25. Antonietta, M.; Fanello, D.D.; Acciari, H.A. Senescence and yield responses to plant density in stay green and earlier-senescing maize hybrids from Argentina. *Field Crop. Res.* **2014**, *155*, 111–119. [[CrossRef](#)]
26. Blevins, R.L.; Smith, M.S.; Thomas, G.W.; Frye, W.W. Influence of conservation tillage on soil properties. *J. Soil Water Conserv.* **1983**, *38*, 301–305.
27. Box, J.E., Jr.; Langdale, G.W. The effect of in—Row subsoil tillage and soil water on corn yields in the southeastern coastal plain of the United States. *Soil Tillage Res.* **1984**, *4*, 67–78. [[CrossRef](#)]
28. Lamm, F.R.; Aiken, R.M.; Abou Kheira, A.A. Corn yield and water use characteristics as affected by tillage, plant density, and irrigation. *Am. Soc. Agric. Biol. Eng.* **2009**, *52*, 133–143.
29. Porter, W.; Lee, D.; Noland, R. *Scheduling and Managing Corn Irrigation*; A Guide to Corn Production in Georgia; University of Georgia College of Agricultural and Environmental Sciences: Athens, GA, USA, 2018; pp. 17–19.
30. Nebraska Extension. Irrigation Management for Corn. Available online: <http://extensionpublications.unl.edu/assets/html/g1850/build/g1850.htm> (accessed on 25 June 2019).
31. Lee, D.; Noland, R. *Agronomic Practices for Corn*; A Guide to Corn Production in Georgia; University of Georgia College of Agricultural and Environmental Sciences: Athens, GA, USA, 2018; pp. 3–12.
32. Pioneer. Corn Growth Stages. Available online: <https://www.pioneer.com/home/site/us/agronomy/crop-management/crop-growth-stages/corn-growth-stages/> (accessed on 25 June 2019).
33. Nebraska Extension. Irrigation Trigger Levels—Soil Types. Available online: <https://water.unl.edu/documents/Irrigation%20Trigger%20Levels%20-%20Soil%20Types.pdf> (accessed on 25 June 2019).
34. University of Georgia Weather Network. Available online: <http://www.georgiaweather.net/> (accessed on 27 June 2019).
35. North Dakota Agricultural Weather Network (NDAWN). Corn Growing Degree Days (GDD). Available online: <https://ndawn.ndsu.nodak.edu/help-corn-growing-degree-days.html> (accessed on 2 February 2016).
36. Rosegrant, M.W.; Cline, S.A. Global food security: Challenges and policies. *Science* **2003**, *302*, 1917–1919. [[CrossRef](#)]
37. Hanjra, M.A.; Ferede, T.; Gutta, D.G. Pathways to breaking the poverty trap in Ethiopia: Investments in agricultural water, education and markets. *Agric. Water Manag.* **2009**, *96*, 1596–1604. [[CrossRef](#)]

38. Hanjra, M.A.; Ferede, T.; Gutta, D.G. Reducing poverty in sub-Saharan Africa through investments in water and other priorities. *Agric. Water Manag.* **2009**, *96*, 1062–1070. [[CrossRef](#)]
39. Tack, J.; Barkley, A.; Hendricks, N. Irrigation offsets wheat yield reductions from warming temperatures. *Environ. Res. Lett.* **2017**, *12*, 114027. [[CrossRef](#)]
40. Grassini, P.; Yang, H.; Cassman, K.G. Limits to maize productivity in Western Corn-Belt: A simulation analysis for fully irrigated and rainfed conditions. *Agric. For. Meteorol.* **2009**, *149*, 1254–1265. [[CrossRef](#)]
41. Bockhold, D.L.; Thompson, A.L.; Sudduth, K.A.; Henggele, J.C. Irrigation scheduling based on crop canopy temperature for humid environments. *Am. Soc. Agric. Biol. Eng.* **2011**, *54*, 2021–2028. [[CrossRef](#)]
42. University of Nebraska. Nebraska Irrigated and Rainfed Corn Yield and Acreage Trends. Available online: <https://cropwatch.unl.edu/corn/yieldtrends> (accessed on 7 June 2019).
43. DEKALB. Planting Population Effect on Yield Potential in Dryland and Irrigated Corn. Available online: <https://monsanto.com/app/uploads/2017/05/slc-dk-corn-yield-by-population-and-irrigation.pdf> (accessed on 6 June 2019).
44. Earl, H.J.; Davis, R.F. Effect of drought stress on leaf and whole canopy radiation use efficiency and yield of maize. *Agron. J.* **2003**, *95*, 688–696. [[CrossRef](#)]
45. Boomsma, C.R.; Vyn, T.J. Maize drought tolerance: Potential improvements through arbuscular mycorrhizal symbiosis? *Field Crop. Res.* **2008**, *108*, 14–31. [[CrossRef](#)]
46. Pereira, L.S.; Oweis, T.; Zairi, A. Irrigation management under water scarcity. *Agric. Water Manag.* **2002**, *57*, 175–206. [[CrossRef](#)]
47. Steele, D.D.; Stegman, E.C.; Knighton, R.E. Irrigation management for corn in the northern Great Plains, USA. *Irrig. Sci.* **2000**, *19*, 107–114. [[CrossRef](#)]
48. Kebede, H.; Fisher, D.K.; Sui, R.; Reddy, K.N. Irrigation methods and scheduling in the Delta region of Mississippi: Current status and strategies to improve irrigation efficiency. *Am. J. Plant Sci.* **2014**, *5*, 2917–2928. [[CrossRef](#)]
49. Da Cunha Leme Filho, J.F. Evaluation of Irrigation Scheduling Methods and Nitrogen Fertilization Effect on Corn Production in Alabama. Master's Thesis, Auburn University, Auburn, AL, USA, 10 December 2016.
50. Whitty, E.B.; Chambliss, C.G. Water Use and Irrigation Management of Agronomic Crops. Master's Thesis, University of Florida, Gainesville, FL, USA, 1998.
51. Salazar, M.R.; Hook, J.E.; Garcia y Garcia, A.; Paz, J.O.; Chaves, B.; Hoogenboom, G. Estimating irrigation water use for maize in the Southeastern USA: A modern approach. *Agric. Water Manag.* **2012**, *107*, 104–111. [[CrossRef](#)]
52. Norwood, C.A. Water use and yield of limited-irrigated and dryland corn. *Soil Sci. Soc. Agron. J.* **2000**, *64*, 365–370. [[CrossRef](#)]
53. Licht, M.A.; Al-Kaisi, M. Corn response, nitrogen uptake and water use in strip tillage compared with no-tillage and chisel plow. *Agron. J.* **2005**, *97*, 705–710. [[CrossRef](#)]
54. Sangoi, L. Understanding plant density effects on maize growth and development: An important issue to maximize grain yield. *Cienc. Rural* **2000**, *31*, 159–168. [[CrossRef](#)]
55. Lauer, J. Should I be planting my corn at a 30-inch row spacing? *Wis. Crop Manag.* **1994**, *1*, 56–57.
56. Bullock, D.; Khan, S.; Rayburn, A. Soybean yield response to narrow rows is largely due to enhanced early growth. *Crop Sci.* **1998**, *38*, 1011–1016. [[CrossRef](#)]
57. Tetio-Kagho, F.; Gardner, F.P. Responses of maize to plant population density. I. Canopy development, light relationships and vegetative growth. *Agron. J.* **1988**, *80*, 930–935. [[CrossRef](#)]
58. Fung, J.; Su, Y. Effects of soils and irrigation volume on maize yield, irrigation water productivity and nitrogen uptake. *Sci. Rep.* **2019**, *9*, 7740. [[CrossRef](#)] [[PubMed](#)]

